



SEABOATS

MARINE BROKERS WITH A GLOBAL APPROACH

AUSTRALIA - BULGARIA - INDIA - INDONESIA - ITALY - MALAYSIA - NEW ZEALAND - PANAMA - PHILIPPINES - SINGAPORE - SPAIN - UK - USA - VENEZUELA - VIETNAM

sales@seaboats.net - www.seaboats.net

260ft Offshore Supply Vessel, built 1996 .



Listing ID - 1004

Description 260ft Offshore Supply Vessel

Date 1996

Launched

Length 79.25m (260ft)

Beam 17.07m (56 ft)

Broker John Kearns
john.kearns@seaboatsbrokers.com
+64 21 400 805

Registration

Hull: 152

Vessel Type: Offshore Supply Vessel

Year Built: 1996

Shipyard: North American Shipbuilding

Dimensions

Dimensions: 260 ft. X 56 ft. X 18 ft. 9 in. (79.25 m X 17.07 m X 5.72 m)

Draft (Lightship): 6 ft. 6 in. (1.98 m)

Draft (Loadline): 15.24 ft. (4.65 m)

Clear Deck: 185.5 ft. x 46.5 ft. (56.54 m x 14.17 m)

Cargo Deck Area: 8,625 sq. ft. (801.17 sq. m)

Deck Cargo Capacity: 1,900 LT (1,930.40 MT)

Deadweight Tonnage: 2,964 LT (3,011.53 MT)

Capacities

Fuel Oil: 204,034 gals. (772.34 cu. m)
Ballast: 384,961 gals. (1,267.97 cu. m)
Potable Water: 36,678 gals. (138.84 cu. m)
Dry Bulk: 9,625 cu. ft. @ 80 psi (272.55 cu. m @ 5.5 bars)
Liquid Mud (Dual Tank System): 8,132 barrels (1,292.88 cu. m)
Methanol: 2,110 barrels (335 cu. m)

Machinery

Main Engines: Two (2) CAT 3516 Diesels, 3,420 bhp
Propulsion: Two (2) Ulstein 1350 HRV Azimuthing
Bow Thrusters: One (1) 1,000 hp CP Tunnel
Bow Thrusters: One (1) 1,200 hp Drop-Down
Speed: 12 knots
Generators: Three (3) x 300 kW
Generators: One (1) x 105 kW

Special Features

Tuggers: Two (2) x 10 Tons
Ship Motion: Two (2) Passive Type Anti-Roll Tanks
Ship Motion: Bilge Keels
Positioning: DP 2
Deck Crane: One (1) x 3,100 lbs. Capacity

Life Saving Equipment

Life Rafts: Four (4) x 20-Man Inflatable Life Rafts
Other gear as required by authorities

Electronics

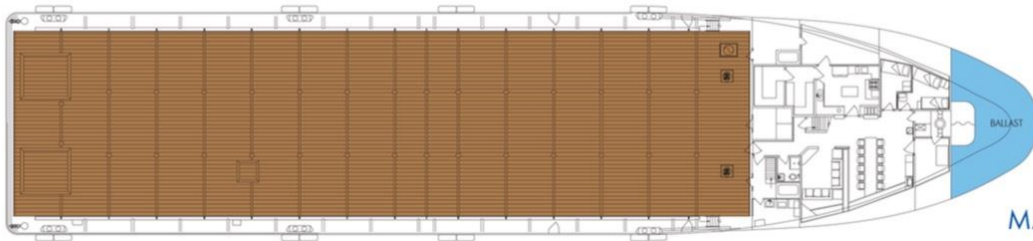
Electronics Package: Two (2) SEA 7156 VHF Radiotelephones, Two (2) SEA 7100 VHF DCS Controllers, SEA 330 SSB Radiotelephone, Furuno Inmarsat-C, Seawatch 7001 MF/HF GMDSS Receiver, Necode DSC 1000, R4 Navigation System, Helm Area Furuno GP32, JRC-300A Navtex Receiver, Furuno Color Video Sounder FE700, ACR Satellite 406 EPIRB, Marine Technologies DP 2 System, Qualcomm Globalstar GPS-2800/2900 Satellite Phone, Three (3) Meridian SG Brown Gyro Compasses, VSAT System, AISs, Three (3) DGPS, Three (3) MRUs, Fanbeam, Three (3) Wind birds, Furuno FR8122 12 kW Radar, Furuno FAR-2107 Radar

Classification

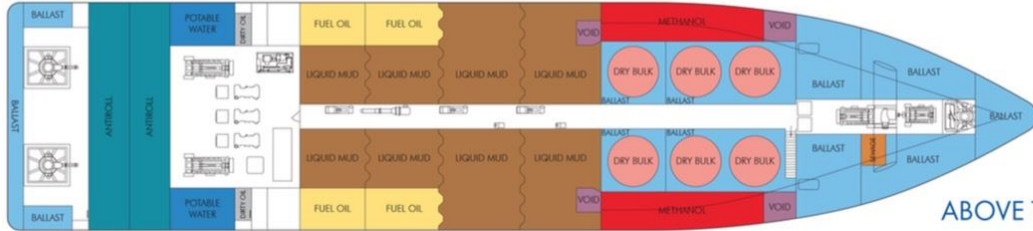
ABS: Maltese Cross A1 (Hull)
ABS: Maltese Cross AMS (Machinery)
ABS: Loadline (Unrestricted Ocean Service)
ABS: Circle E (Equipment)
ABS: Maltese Cross DPS 2
USCG: Subchapter L (OSV)
SOLAS

Accommodation

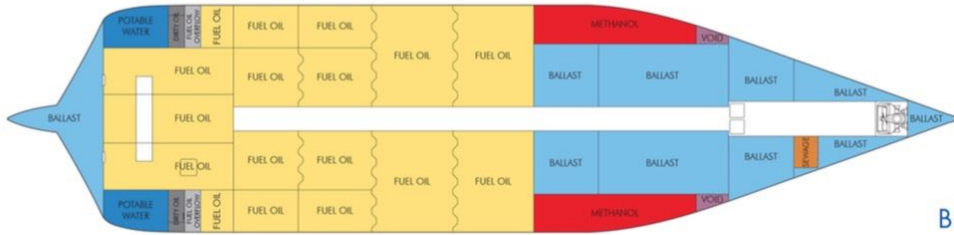
Accommodation: 31



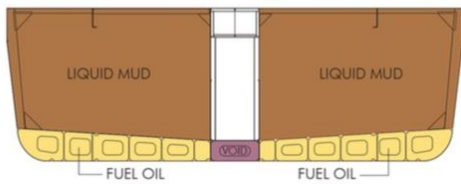
MAIN DECK



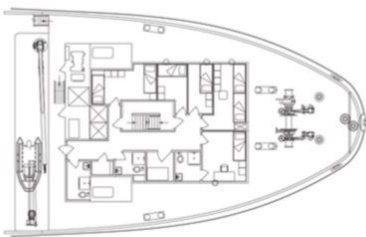
ABOVE TANK TOP



BELOW TANK TOP



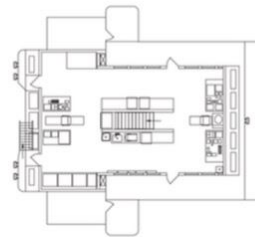
CROSS SECTION



DECK 01



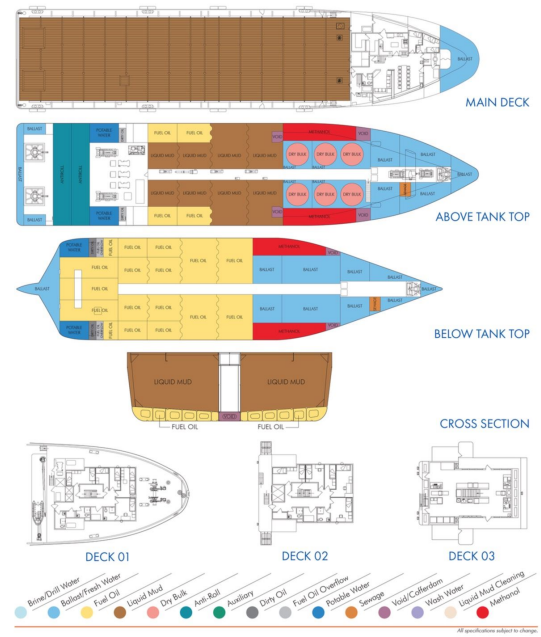
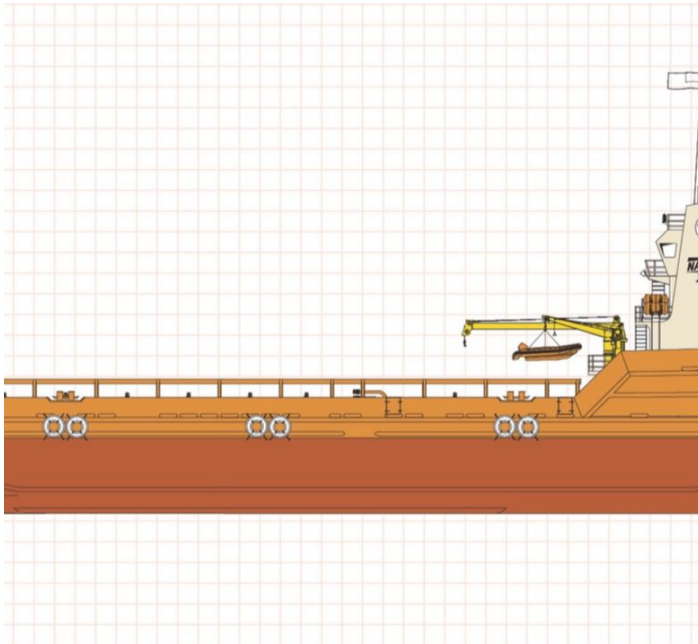
DECK 02



DECK 03

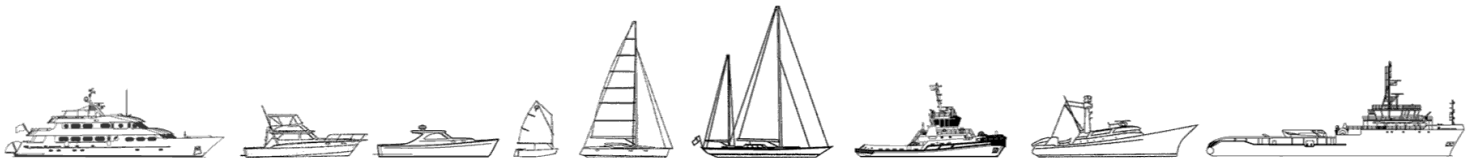


All specifications subject to change.





The details of all vessels are offered in good faith but we cannot guarantee or warrant the accuracy of this information nor warrant the condition of the vessel. Any buyer should instruct their agents, or their surveyors, to investigate such details as the buyer desires validated. This vessel is offered subject to sale, price change, location or withdrawal without notice.



AUSTRALIA - BULGARIA - INDIA - INDONESIA - ITALY - MALAYSIA - NEW ZEALAND - PANAMA - PHILIPPINES - SINGAPORE - SPAIN - UK - USA - VENEZUELA - VIETNAM