



SEABOATS

MARINE BROKERS WITH A GLOBAL APPROACH

AUSTRALIA - BULGARIA - INDIA - INDONESIA - ITALY - MALAYSIA - NEW ZEALAND - PANAMA - PHILIPPINES - SINGAPORE - SPAIN - UK - USA - VENEZUELA - VIETNAM

sales@seaboats.net - www.seaboats.net

21.1m Fishing Vessel For Sale.



Listing ID - 1014

Description 21.1m Fishing Vessel

Date 1992

Launched

Length 21.1m (69ft 2in)

Beam 5.6m (18ft 4in)

Location Tonga

Broker Franklin Taylor

franklin.taylor@seaboatsbrokers.com

+64 27 276 5383

Price AUD 650,000

Boat Type: Fishing Vessel (Long Liner)

LOA: 21.1m (20m)

Beam: 5.6m

Draft: 2.82m

Designer: BK Bailey, St. Helens, Tasmania

Boat Colour: Teal & White

Builder: Bailey, St. Helens, Tasmania

Launched: 1992

Hull Material: Steel

Deck Material: Steel

Engine: John Deere 6135AFM85 installed 2016

Speed: 9 knots

Accommodation

Forward Deck: Port 2 bunks

Starboard 2 bunks

Foscle: 4 bunks
Portside Engineers Cabin: 1 bunk
Captain: Top Deck Bench in Bridge

Galley

6 man saloon table
Microwave
Fridge freezer
Hot/Cold water
Sink
Electric Stove

Refrigeration

Ice maker system (2.5L/day)
2 Fish holds with blowers.

Both forward and aft hold freezers have a set of blower fan evaporators and more like a holding room than blast freezer. Deck has 2 x slurry bin capable of holding around 1 ton each, these are not refrigerated as they use ice. 2 ton icemaker mounted on deck between the two fish holds, fitted with deflection plate to direct ice to front or rear fish hold.

Miscellaneous Galley Equipment

Shower
Toilet

Engine Description

2016 John Deere 6135AFM85

Mechanical Details

Newly installed Isuzu Generator (Feb 2018)
5:1 Dongai Gearbox

Tankage

Fuel: 3.87L aft, wing x 2 (4.5l each)
Water: 2 x aft, (2L each)
Small tank (1L) stbd side

Electrical System

240/415 V electrical system
2 x24V Batteries (emergency system)

Electrical Equipment

2 x pcs charts fish finder

Navigation Equipment

Radar
Autopilot
Radios: SSB/VHF/HF/ Radio Direction Finder

Entertainment

TV + DVD

Construction Details

Raised forward deck, Forward House Hard Chine

Deck Equipment

Shooter - New 2018

Main Spool – New 2018

Rig and Rigging

Derrick – 200 kg

Steering: Hydraulic Steering

Fishing Equipment

New LP winch and shooter

New hydraulics

Fish hold 44m³

Cargo Gear: Derrick – 250 kg

Survey Details: Under survey

Safety equipment

RFD

EPIRB

Flares

Life Vests

Marina / Mooring

Tu'imatamoana Wharf, Tonga (public Wharf)

Maintenance

Kept maintained by in-house workshop team.

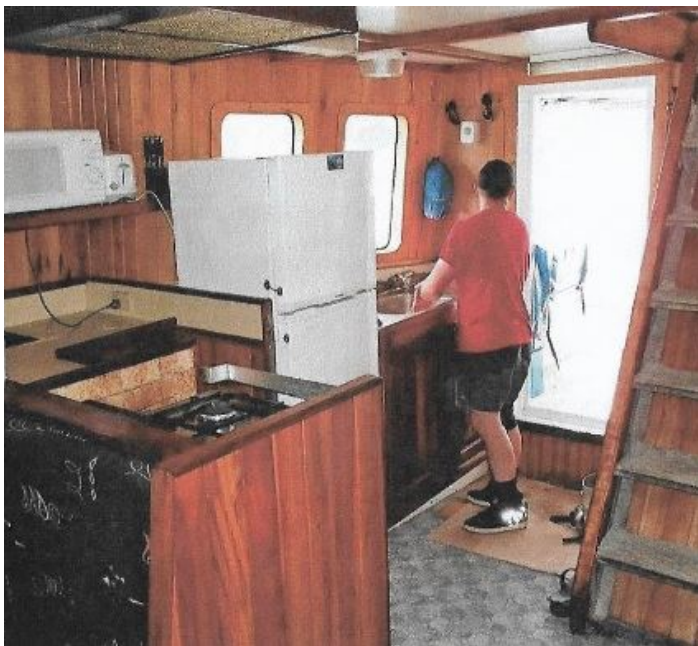
Annual surveys.

Vessel History

Ex “ KARINA B”, Mooloolaba, QLD, Australia

Purchased in May 2016.

Engine Replaced















The details of all vessels are offered in good faith but we cannot guarantee or warrant the accuracy of this information nor warrant the condition of the vessel. Any buyer should instruct their agents, or their surveyors, to investigate such details as the buyer desires validated. This vessel is offered subject to sale, price change, location or withdrawal without notice.



