



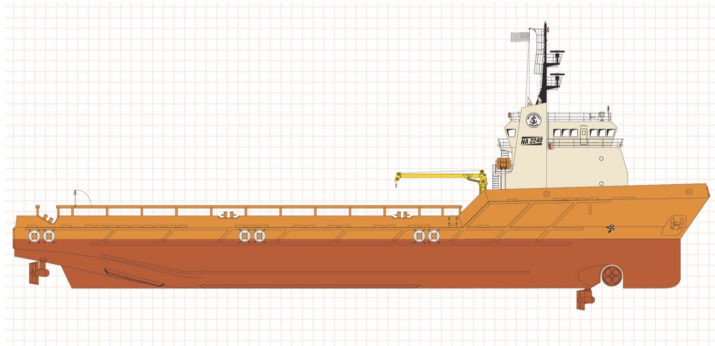
SEABOATS

MARINE BROKERS WITH A GLOBAL APPROACH

AUSTRALIA - BULGARIA - INDIA - INDONESIA - ITALY - MALAYSIA - NEW ZEALAND - PANAMA - PHILIPPINES - SINGAPORE - SPAIN - UK - USA - VENEZUELA - VIETNAM

sales@seaboats.net - www.seaboats.net

240ft Offshore Supply Vessel



Listing ID - 1027

Description 240ft Offshore Supply Vessel

Date 1999

Launched

Length 73.15m (240ft)

Beam 17.07m (56ft)

Draft 6.4m (21ft)

Location USA

Broker John Kearns
john.kearns@seaboatsbrokers.com
+64 21 400 805

Registration

Hull: 207

Vessel Type: Offshore Supply Vessel

Year Built: 1999

Shipyard: North American Fabricators

Dimensions

Dimensions: 240 ft X 56 ft X 21 ft (73.15 m X 17.07 m X 6.4 m)

Draft (Lightship): 6 ft. 6 in. (1.98 m)

Draft (Loadline): 18 ft (5.49 m)

Clear Deck: 165 ft x 46 ft (50.29 m x 14.02 m)

Cargo Deck Area: 7,590 sq. ft. (705.13 sq. m)

Deck Cargo Capacity: 1,750 LT (1,778.08 MT)

Deadweight Tonnage: 3,000 LT (3,048 MT)

Capacities

Fuel Oil: 315,260 gals. (1,193.39 cu. m)

Ballast: 265,211 gals. (1,003.93 cu. m)

Potable Water: 24,031 gals. (90.97 cu. m)

Dry Bulk: 8,106 cu. ft. @ 80 psi (229.54 cu. m @ 5.5 bars)

Liquid Mud: 6,063 barrels (963.94 cu. m)

Machinery

Main Engines: Two (2) 3516 CAT Diesels, 3,200 BHP

Bow Thrusters: One (1) Ulstein TCNS Swing Up

Bow Thrusters: One (1) Ulstein TV-45 Tunnel

Stern Thrusters: Two (2) Ulstein 1350H Retractable Azimuthing

Speed: 14.2 knots

Generators: Two (2) x 500 kW

Generators: One (1) x 170 kW emergency

Special Features

Tuggers: Two (2) x 4 Tons

Ship Motion: Two (2) Passive Type Anti-Roll Tanks

Ship Motion: Bilge Keels

Positioning: DP-2

Life Saving Equipment

Life Rafts: Four (4) x 20-Man Inflatable Life Rafts

Rescue Platform

Other gear as required by authorities

Electronics

Electronics Package: Two (2) JRC JMA-7000 Marine Radars, Two (2) Young Wind Trackers, Two (2) JRC JHS31A VHF Radiotelephones, JRC J-NAV500 GPS Navigator, Marine Technologies Brige Mate AIS, Furuno FCV-667 Depth Sounder, Harris HelmAlert, JRC NCR-300A NAVTEX Receiver, NECODE DSC 1000, JRC GMDSS Console, JUE-75C INMARSAT-C, Two (2) JRC JHS-32A DSC Watchkeeping Receivers, Kongsberg Simrad STS-01 Autopilot, Marine Technologies DP 2 Dynamic Positioning System, Marine Technologies 1 m Sea Tel VSAT

Classification

ABS: Maltese Cross A1 (Hull)

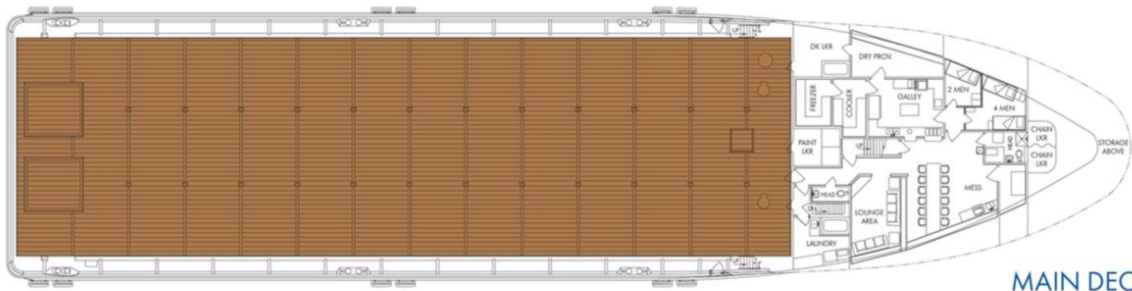
ABS: Maltese Cross AMS (Machinery)

ABS: Loadline

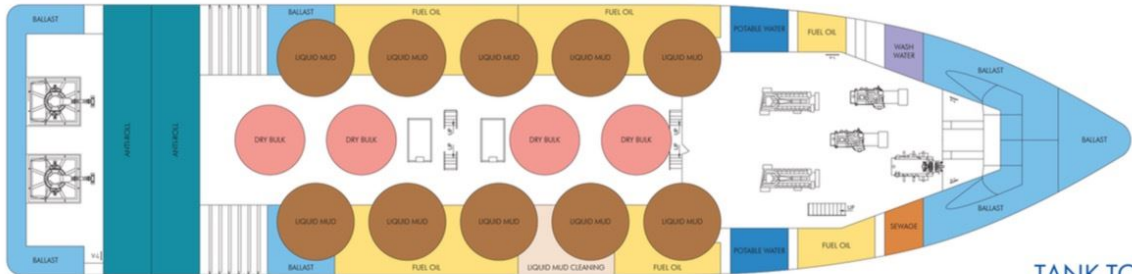
USCG: Subchapter L (OSV)

MARPOL: 1973/1978/1992

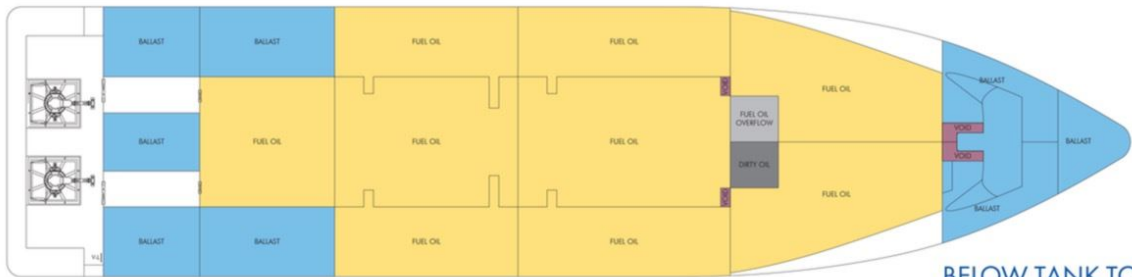
Accommodations: 29



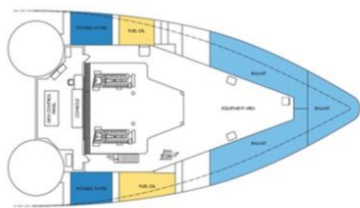
MAIN DECK



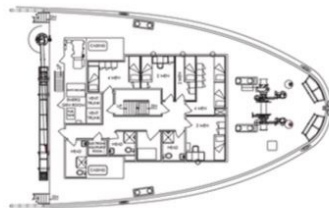
TANK TOP



BELOW TANK TOP



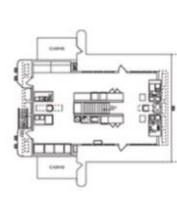
CONTROL ROOM



DECK 01



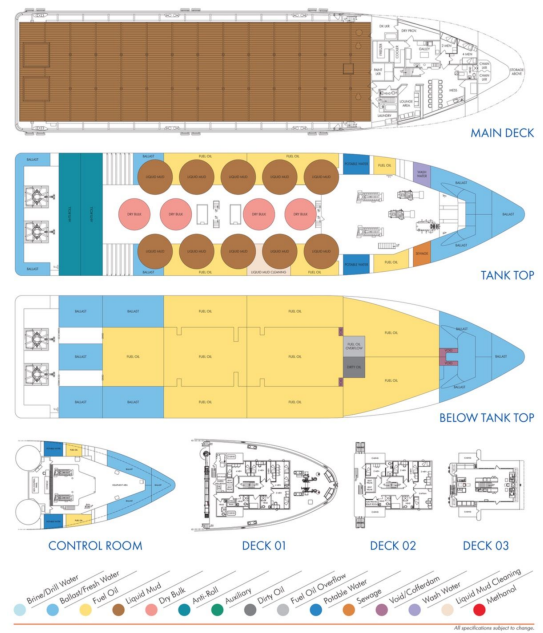
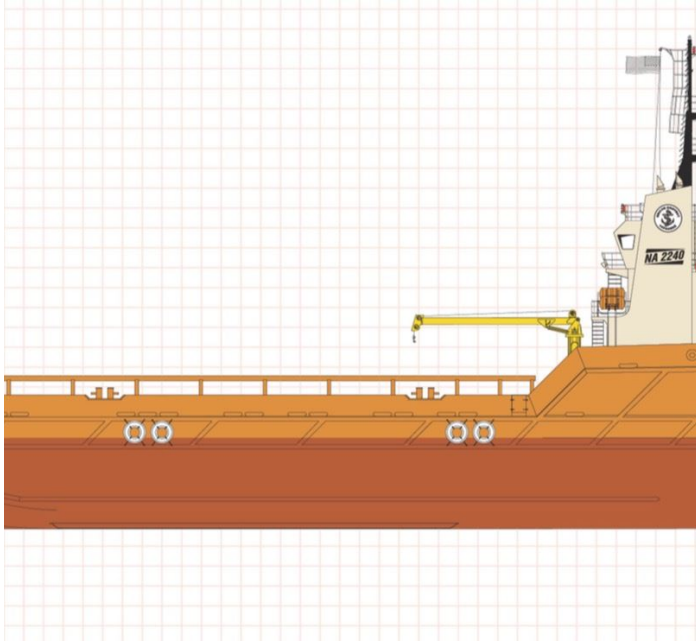
DECK 02



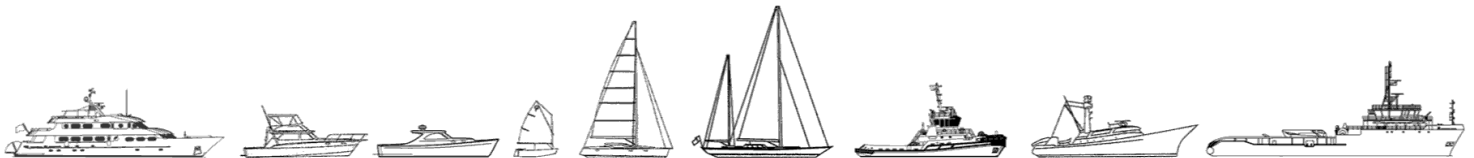
DECK 03



All specifications subject to change.



The details of all vessels are offered in good faith but we cannot guarantee or warrant the accuracy of this information nor warrant the condition of the vessel. Any buyer should instruct their agents, or their surveyors, to investigate such details as the buyer desires validated. This vessel is offered subject to sale, price change, location or withdrawal without notice.



AUSTRALIA - BULGARIA - INDIA - INDONESIA - ITALY - MALAYSIA - NEW ZEALAND - PANAMA - PHILIPPINES - SINGAPORE - SPAIN - UK - USA - VENEZUELA - VIETNAM