



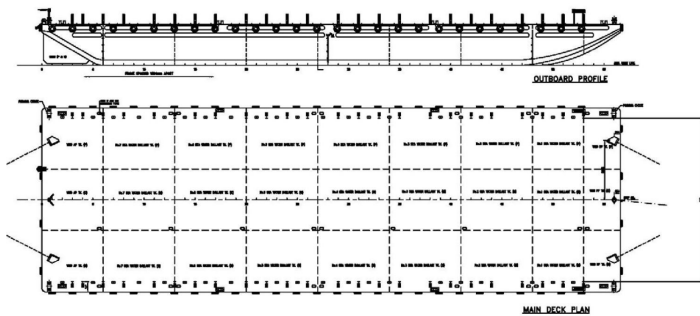
# SEABOATS

MARINE BROKERS WITH A GLOBAL APPROACH

AUSTRALIA - BULGARIA - INDIA - INDONESIA - ITALY - MALAYSIA - NEW ZEALAND - PANAMA - PHILIPPINES - SINGAPORE - SPAIN - UK - USA - VENEZUELA - VIETNAM

[sales@seaboats.net](mailto:sales@seaboats.net) - [www.seaboats.net](http://www.seaboats.net)

## 282ft Steel Deck Barge



### Listing ID - 1103

**Description** 282ft Steel Deck Barge

**Date** 2007

**Launched**

**Beam** 30.48m (100ft)

**Draft** 5.029m (16ft 5in)

**Broker** Franklin Taylor  
[franklin.taylor@seaboatsbrokers.com](mailto:franklin.taylor@seaboatsbrokers.com)  
+64 27 276 5383

**Price** POA

Port of Registry & Flag: Malaysia

Classification & Notation: BV

LOA: 282ft

Beam: 100ft

Depth: 22ft

Draft Design: 5.029m

GRT: 3709

NRT: 1112

Deadweight: 10,700 mt

Deck Loading: 15 mt/sq.m

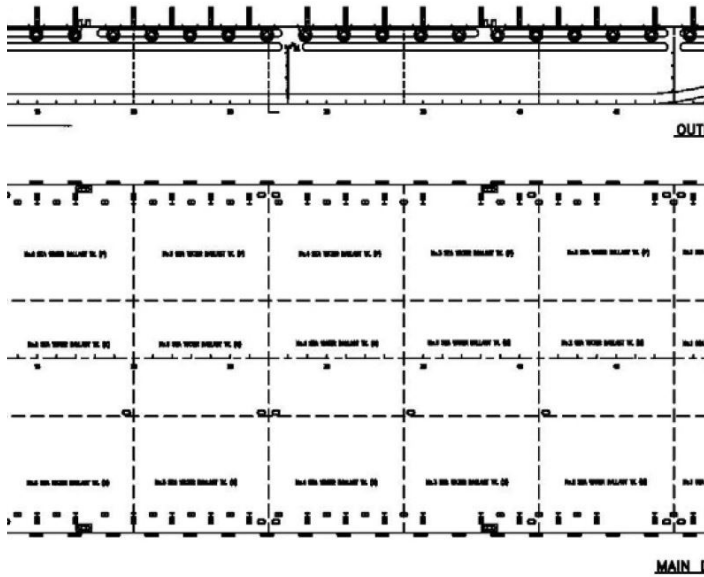
Deck Fitting & Equipment: 4x Twin Mooring Bollards of 300 mm dia

Anchor: 1x approx. 100kg

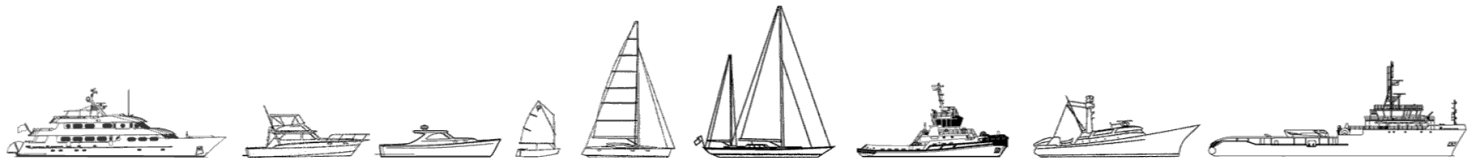
Towing Brackets: 2x Smit bracket c/w chafting chain

Emergency Towing Bracket: 2x At Stern Ends

Fenders: Tyre fenders



The details of all vessels are offered in good faith but we cannot guarantee or warrant the accuracy of this information nor warrant the condition of the vessel. Any buyer should instruct their agents, or their surveyors, to investigate such details as the buyer desires validated. This vessel is offered subject to sale, price change, location or withdrawal without notice.



AUSTRALIA - BULGARIA - INDIA - INDONESIA - ITALY - MALAYSIA - NEW ZEALAND - PANAMA - PHILIPPINES - SINGAPORE - SPAIN - UK - USA - VENEZUELA - VIETNAM