



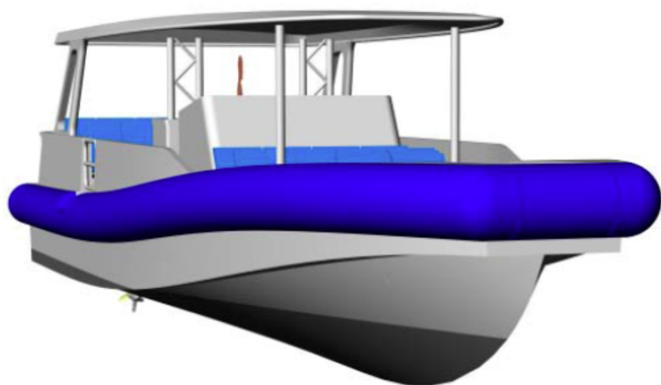
# SEABOATS

MARINE BROKERS WITH A GLOBAL APPROACH

AUSTRALIA - BULGARIA - INDIA - INDONESIA - ITALY - MALAYSIA - NEW ZEALAND - PANAMA - PHILIPPINES - SINGAPORE - SPAIN - UK - USA - VENEZUELA - VIETNAM

[sales@seaboats.net](mailto:sales@seaboats.net) - [www.seaboats.net](http://www.seaboats.net)

## NEW BUILD - 14.8m Open Coastal Ferry - Kitset



### Listing ID - 1128566

**Description** NEW BUILD - 14.8m Open Coastal Ferry

**Date** Built to Order

**Launched**

**Length** 14.8m (48ft 6in)

**Beam** 4.5m (14ft 9in)

**Draft** 0.65m (2ft 1in)

**Note** 4x 300hp Mercury Verado

**Broker** Geoff Fraser  
[geoff.fraser@seaboats.net](mailto:geoff.fraser@seaboats.net)  
+64 21 61 222 5

**Price** POA

**Price Notes** This is offered as a kitset for any builder and we can also arrange a builder in a few locations.

This is offered as a kitset for any builder and we can also arrange a builder in a few locations.

LOA: 14.8m (48ft 6in)

LWL: 13.1m (42ft 11in)

Beam: 4.5m (14ft 9in)

Deadrise: 18 deg

Draft: 0.65m (2ft 1in)

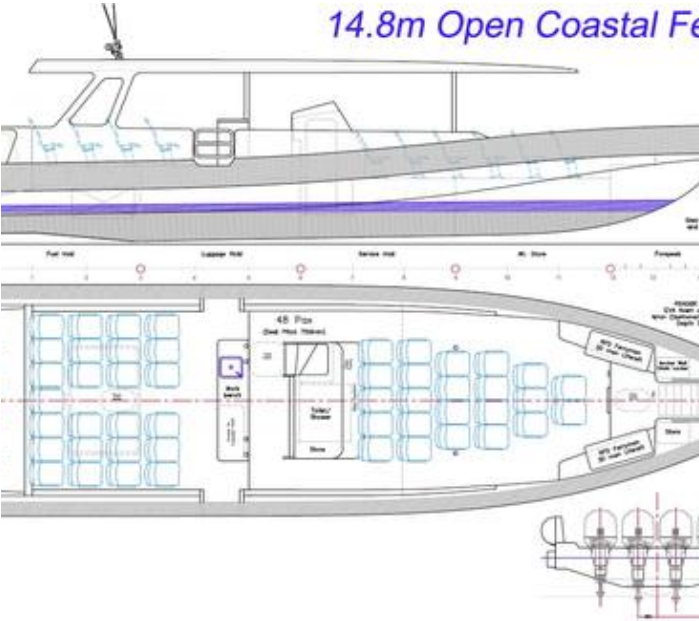
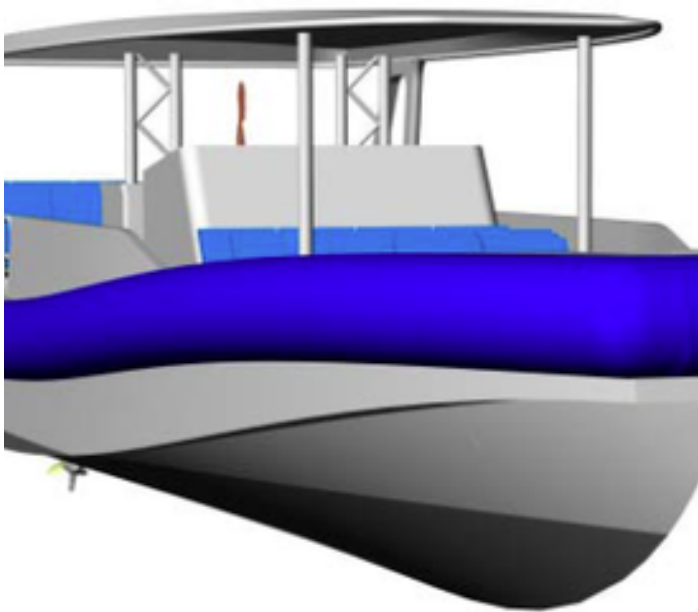
Fuel: 1290 litres

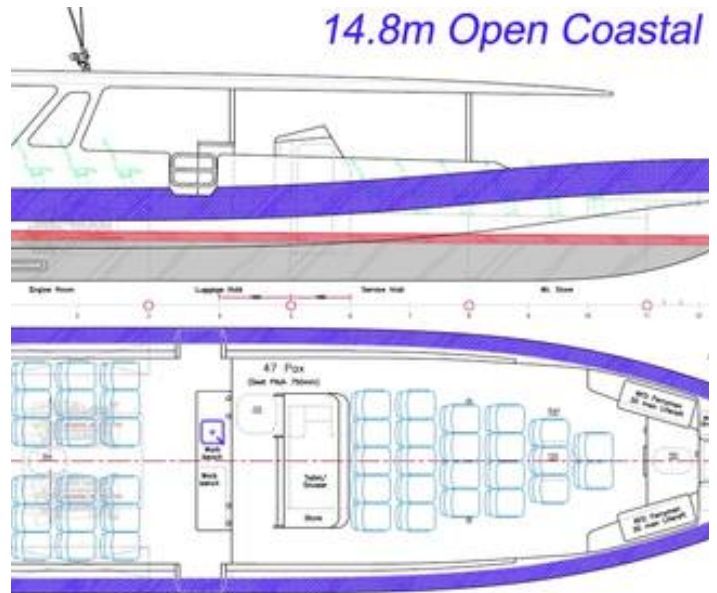
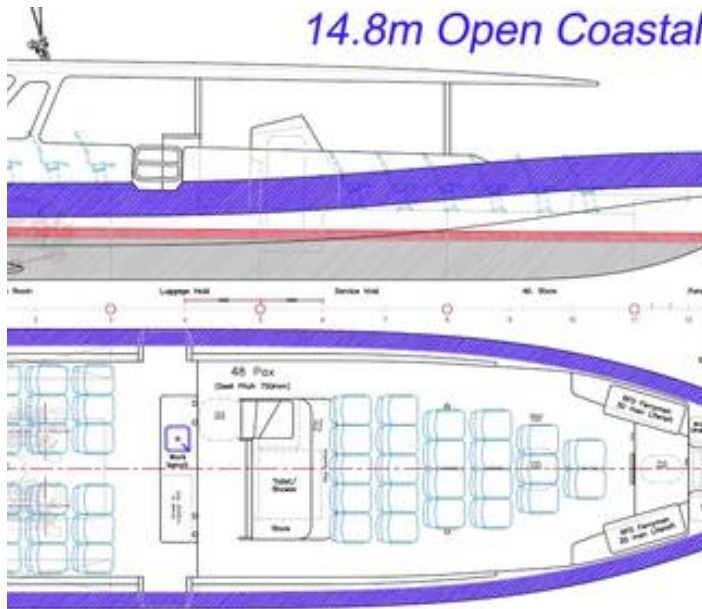
Power: 4x 300hp Mercury Verado

Pax: 48

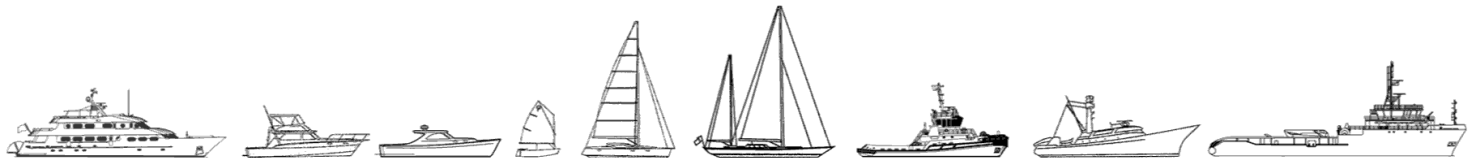
Crew: 2

Speed (max): 40 knots (4.55t dwt)  
 Speed (cruise): 28 knots (4500rpm)  
 Luggage: 9m<sup>3</sup>  
 Class Standard: DNV HSLC R3  
 Survey NSCV 1C  
 Construction: Marine Grade Aluminium





The details of all vessels are offered in good faith but we cannot guarantee or warrant the accuracy of this information nor warrant the condition of the vessel. Any buyer should instruct their agents, or their surveyors, to investigate such details as the buyer desires validated. This vessel is offered subject to sale, price change, location or withdrawal without notice.



AUSTRALIA - BULGARIA - INDIA - INDONESIA - ITALY - MALAYSIA - NEW ZEALAND - PANAMA - PHILIPPINES - SINGAPORE - SPAIN - UK - USA - VENEZUELA - VIETNAM