



# SEA BOATS

MARINE BROKERS WITH A GLOBAL APPROACH

AUSTRALIA - BULGARIA - INDIA - INDONESIA - ITALY - MALAYSIA - NEW ZEALAND - PANAMA - PHILIPPINES - SINGAPORE - SPAIN - UK - USA - VENEZUELA - VIETNAM

[sales@seaboats.net](mailto:sales@seaboats.net) - [www.seaboats.net](http://www.seaboats.net)

## SOLD - 72m OSV (DP1)



### Listing ID - 1191343

**Description** 72m multi-use OSV

**Date** 1981

**Launched**

**Length** 72m (236ft)

**Beam** 16m (52ft 5in)

**Draft** 6.5m (21ft 3in)

**Note** 3970 tonnes

**Broker** Peter Cookson  
[peter.cookson@seaboatsbrokers.com](mailto:peter.cookson@seaboatsbrokers.com)  
+61 429 543 180

**Price** SOLD

**Price Notes** All offers considered

**Our Clients say "Sell, 'as is, where is'".** Seahorse Spirit (ex British Viking, Balder Hudson) (IMO 7623904) has been employed in Australia for a number of years as a training vessel under charter to the Royal Australian Navy, operated by a prominent Government Contractor. Builder: Maystown Shipyard, Newfoundland 1981. Class: BV, NSCV Commercial Operations; Flag State 2B DPI; BV3/3 Hull MACH ICEIII AUT/UMS. Flag: Australia. L/B/Draft 72m/16m/6.5max. Displacement: 3970mt. Gross tonnage: 2090. LDT: 2170 tons. Clear Deck Area: 516m<sup>2</sup>. Two (2) MLW Alco model 251 diesel engines total 4,086kW @ 1100rpm. Two (2) Liaaen/Hjeiset Controllable pitch propellers. Two (2) Tunnel Bow Thrusters 894kW. Two (2) Stern Thrusters (1x447kW + 1x298kW). Top Speed: 12 knots, Economic Speed: 8 knots. Range: 19,000 nm at eco speed. Endurance 100 days. Deck Load: 5 tonnes/m<sup>2</sup>, Deadweight: 450.00MT. Total no. of Berths: 11 crew/49 supernumerary berths, fully air conditioned. 4 Berth hospital. Deck cranes: 1x5 tonne @9m radius (port) + 1x2tonne @ 3m radius(stbd). (All details 'about' and without guarantee). The vessel's certificates expire in February 2016 and the Classification Society have indicated their willingness to grant an extension so that the vessel may proceed to

drydock. **Sellers will consider all offers for a quick sale strictly on an 'as is, where is' basis.** Independent pre-purchase inspection report available to named buyers.

**Operational Capability:** ROV/side scan sonar, general & bulk cargo, rescue/salvage operations

**Air operation capability:** Air winch and foot rope

**Emergency Response Capability:** 4 Berth hospital/Full AMSA Inventory

**Weather Restrictions:** Force 6/7

**Class:** Classification society Bureau Veritas, Vessel/Special Purpose Ship Deep Sea Flag State 2B DPI, BV3/3 Hull MACH ICEIII AUT/UMS

**Built:** Maystown Shipyard Ltd, Newfoundland, Canada

**Build date:** Keel laid, July 1981

**Construction:** Steel

**Crew/Super-numerary:** 11/49

### **Dimensions and Tonnage:**

LOA: 72m

Breadth overall: 16m

Maximum draught: 6.5m

Maximum displacement: 3970 tonnes

Gross tonnage: 2090 GT

Masthead height: 22.5m

Bridge height of eye: 14m

Deck size: 516m<sup>2</sup> (43.3m x12m)

Deck load: 5 tonnes per m<sup>2</sup>

### **Engineering**

Main Propulsion: 2x MLW Alco model 251 V12 total power 4086kW @ 1100rpm

Shaft Generators: 2x Nebb WAB 560E8 total power 2400KVA = 1920kW @ 0.8pf

Auxiliary power: 3x Cat 3412 TA total power 1230kW @ 1800rpm = 1155kW @ .94pf

Power Supply: 440v 60Hz

Thruster Bow: 2x CP Brunvall SPX-VP-600 total power 894kW tunnel

Thruster Stern: Brunvoll SPX-VP 600 447kW tunnel, +1x CP Brunvoll SPX-VP 400 298kW tunnel

Propeller: 2x Liaaen / Hjeiset CP Propellers

### **Speed, Range and Endurance**

Maximum Speed: 12 knots

Economical Speed: 8 knots

Range at economical Speed: 19,000 nm

Endurance: 100 days

### **Navigation and Communications**

International Call Sign: VNFG

Radar: 1x JRC JMA 7000 Semi ARPA; 1x JRC JMA 5320 Full ARPA with AIS & Chart Plotter Integration

GPS: 1x Simrad DGPS, 1x Omnistar DGPS with high precision subscription based differential correction

Echo Sounder: Furuno FE700

Auto pilot: Comnav 2001

Compass: 2x Sperry SR220 Gyrocompasses

GMDSS: Certified to operate in areas A1, A2 & A3

Dynamic Positioning: Kongsberg ADP311

### **Liquid Capacity and Transfer Capability**

Fuel: 965m<sup>3</sup>

Drill Water: 1,180m<sup>3</sup>

Potable w2 water: 455m<sup>3</sup>

### **Cargo Capacity and Transfer Capability**

Weather Deck: 1,600 tonnes on 480 sqm

Derrick/Crane: Port 1x5 tonne @ 9m radius

Deck Winch: Aft port and starboard Hatlapa Capstans 10 tonne each, 2x 15 tugger winch

### **Accommodation and Facilities**

Berths/Cabins: Accommodation for 60 people crew – single and twin berth, super numerary – two and four berth

Shower/toilet: Communal Showers on 2 decks, en suites above main deck

Galley: Commercial Galley

Fresh (refrigerated) storage: 8.5m<sup>3</sup> walk-in cool room and 2x240 litre domestic fridges in galley

Frozen Storage: 19m<sup>3</sup> at 18°C to -20°C

Dry Storage: 2x 8m<sup>3</sup>











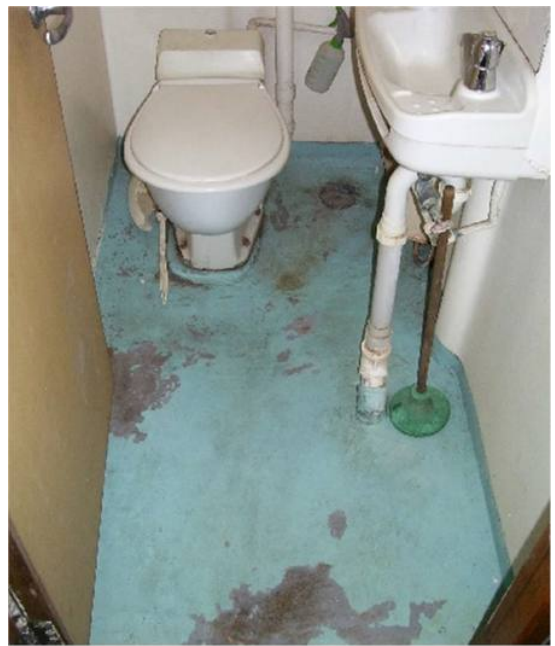








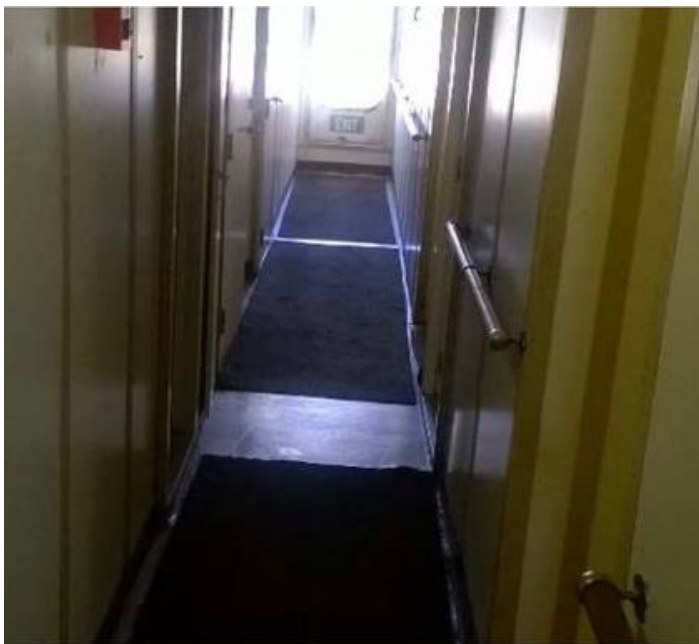
















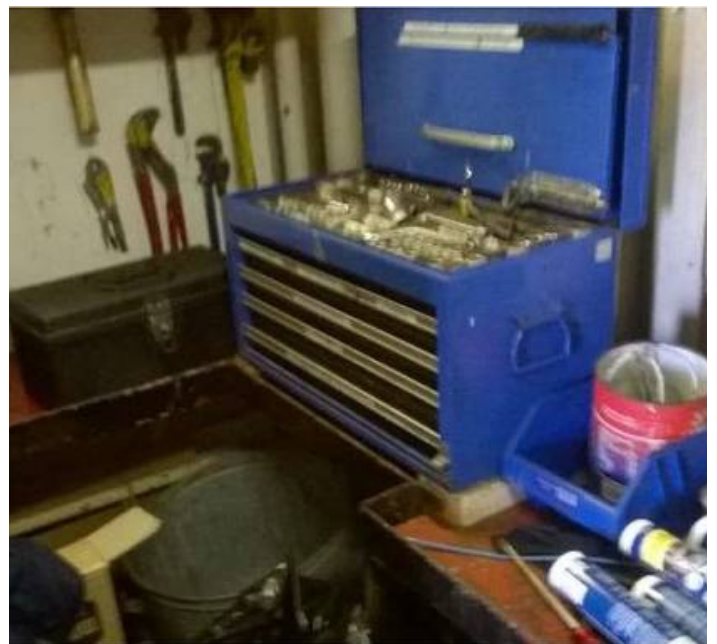




























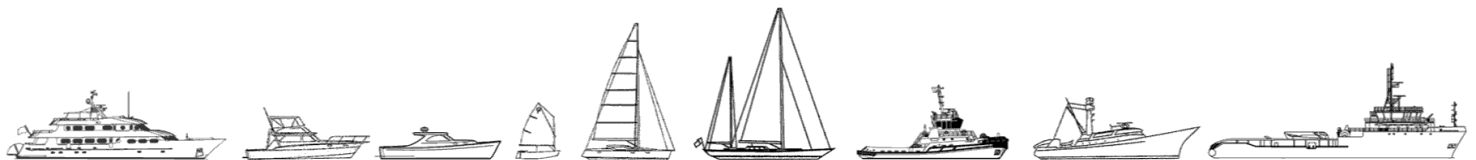








The details of all vessels are offered in good faith but we cannot guarantee or warrant the accuracy of this information nor warrant the condition of the vessel. Any buyer should instruct their agents, or their surveyors, to investigate such details as the buyer desires validated. This vessel is offered subject to sale, price change, location or withdrawal without notice.



AUSTRALIA - BULGARIA - INDIA - INDONESIA - ITALY - MALAYSIA - NEW ZEALAND - PANAMA - PHILIPPINES - SINGAPORE - SPAIN - UK - USA - VENEZUELA - VIETNAM