



SEABOATS

MARINE BROKERS WITH A GLOBAL APPROACH

AUSTRALIA - BULGARIA - INDIA - INDONESIA - ITALY - MALAYSIA - NEW ZEALAND - PANAMA - PHILIPPINES - SINGAPORE - SPAIN - UK - USA - VENEZUELA - VIETNAM

sales@seaboats.net - www.seaboats.net

42.6m Crane Barge for Charter Only



Listing ID - 1193237

Description 42.6m Crane Barge for Charter only

Date 1952

Launched

Length 42.6m (139ft 9in)

Beam 21.3m (69ft 10in)

Draft 2.85m (9ft 4in)

Location Europe

Broker John Kearns
john.kearns@seaboatsbrokers.com
+64 21 400 805

Price POA

Built (year and place): 1952, UNITED STATES OF AMERICA

Hull material: Steel

Flag: UNITED KINGDOM

Class Society and Notation: MCA Load Line

Next SS: October 2024

PRINCIPLE DIMENSIONS

Length Overall: 42.6m (139ft 9in)

Breadth: 21.3m (69ft 10in)

Draft: 2.85m (9ft 4in)

NT: 373 tons

GT: 1246 tons

DWT: 750 tons

MACHINERY & PROPULSION

Auxiliary engine(s): 1 X 208 KW, Twin Caterpillar,1 X

ADDITIONAL INFORMATION

OTHER DETAILS

Ex US Military Vessel

4-point mooring system

Fuel Capacity: 57 tonnes

Fresh Water: 0.75 m³

EQUIPMENT

Crane: Pedestal Mount Dravo 360° slew 150 te 20 m radius

Mooring System: 4-point mooring system, independently operated

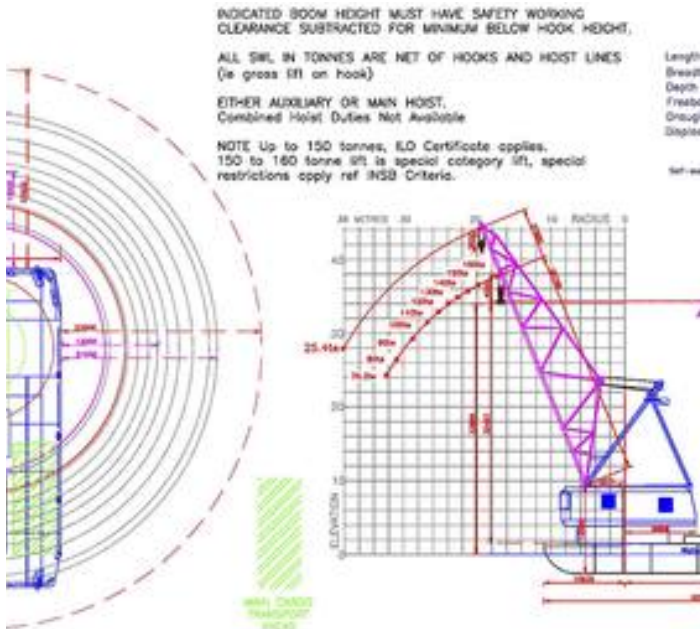
Hydraulic winches

ACCOMMODATION

14 persons

Full domestic facilities self-sustaining





The details of all vessels are offered in good faith but we cannot guarantee or warrant the accuracy of this information nor warrant the condition of the vessel. Any buyer should instruct their agents, or their surveyors, to investigate such details as the buyer desires validated. This vessel is offered subject to sale, price change, location or withdrawal without notice.

