



SEABOATS

MARINE BROKERS WITH A GLOBAL APPROACH

AUSTRALIA - BULGARIA - INDIA - INDONESIA - ITALY - MALAYSIA - NEW ZEALAND - PANAMA - PHILIPPINES - SINGAPORE - SPAIN - UK - USA - VENEZUELA - VIETNAM

sales@seaboats.net - www.seaboats.net

Bertram 54 Convertible Sports Fisher



Listing ID - 1219

Description Bertram 54 Convertible Sports Fisher

Date 1986

Launched

Length 16.5m (54ft)

Beam 5.15m (16ft 11in)

Draft 1.6m (5ft 2in)

Location South Africa

Price \$225,000.00

1986 Bertram 54 Convertible Sports Fish

The Bertram 54 is a proven tournament winner and the sportfishing superstar of her era. She is one of the most popular sport fishing vessels of her size ever built. Only a few boats compared with the 54 when it came to open-water handling and heavy weather performance. This is a large volume cruiser with 3 separate sleeping accommodations each with their own head and shower. She has been imported from Florida to South Africa and has undergone extensive upgrades since 2015 which include a complete change of the vessels electrical system, equipment and generator to 220v in 2016.

Some of her top-quality construction features include: Hand laid fiberglass hull, through bolted and bonded hull to deck shoebox joint, isophthalic gelcoat, metal backing plates on stress bearing hardware, custom fiberglass fuel tanks, custom metal engine foundations, all bronze thru hulls, highest grade SS fasteners, leaded foam insulation, highest grade colour coded marine wiring, copper bonding system, extruded aluminium rub rails.

If you are in the market for a large volume sport fish, the Bertram 54 is one of the finest boats ever built in this size range.

Dimensions

LOA: 54 ft 0 in

Beam: 16 ft 11 in

Maximum Draft: 5 ft 2 in

Dry Weight: 65000 lbs

Engines

Total Power: 1960 HP

Engine 1:

Engine Brand: Detroit Diesel

Year Built: 1986

Engine Model: BKX 12V71 TI

Engine Type: Inboard

Engine/Fuel Type: Diesel

Location: Starboard

Drive Type: Direct Drive

Engine Power: 980 HP

Engine 2:

Engine Brand: Detroit Diesel

Year Built: 1986

Engine Model: BKX 12V71 TI

Engine Type: Inboard

Engine/Fuel Type: Diesel

Location: Port

Drive Type: Direct Drive

Engine Power: 980 HP

Cruising Speed: 22 knots

Maximum Speed: 25 knots

Tanks

Fresh Water Tanks: 1 (250 Gallons)

Fuel Tanks: (900 Gallons)

Holding Tanks: 1 (50 Gallons)

Vessel Walk Through

VIP stateroom forward has island queen berth, private head with stall shower, TV/VCR, stereo system and A/C control panel. Aft to port is the master stateroom with an offset Queen Island Berth, private head with stall shower, TV/VCR, A/C controls. Aft to starboard is the over/under washer/dryer followed by a third guest stateroom with over/under berths, private head and A/C control panel. Up to main salon with galley forward to port and L shaped dinette forward to starboard. The salon was updated in 2012. The large "L" shaped salon sofa is situated in the aft port corner of the main salon and plenty of room to stretch out and entertain

Accommodations

L shaped couch to port with storage and rod storage within Dinette forward to starboard with storage under and Corian top Custom cut down Galley forward to port with Corian counters w/Sub Zero refrigerator & freezer below Large coffee table w/storage under Garbage disposal 2 Sinks & Kitchen Aid 2 burner cook top Kitchenaid convection & microwave Instant hot water at sink.

Grudig TV Bose amp w/Bose Surround Sound Hisense TV. Wood mini blinds w/accent drapes wood interior

Down 3 steps Starboard Stateroom with head & shower, hanging locker & drawer storage Forward to port is Owner Stateroom w/queen centerline bed, storage under also drawers under, 2 end tables w/storage, large hanging locker Head & stall shower

Defy washer/ Defy dryer across to starboard Forward to VIP which has queen berth w/storage under with head & stall shower to starboard, abundant storage in this stateroom.

Galley

Located forward of the Main Salon the large galley offers all of the amenities typically onboard a vessel of this caliber.

Electronics & Navigation

2016 NEW - SART and EPIRB

2016 NEW - Garmin 1020 XS GPS plotter / Radar

2017 NEW 1Kw Chirp transducer

2016 NEW - Standard Horizon VHF with integrated AIS, hailer etc

2016 NEW - Simrad autopilot AP28X

2017 NEW ICOM AIS

2016 NEW – Satlink Satellite telephone – FB 250

Standard Horizon 2nd VHF

Furuno DSC HF - 2014

2016 NEW Sailor RT6222 DSC VHF - Bridge

2017 NEW Sailor RT6222 DSC VHF – Saloon, with 220V-12V Converter

Furuno GP32 GPS-Saloon

Furuno GP-90 GPS – 2014

Seatell Satellite Television with DSTV decoder

2016 NEW Boss sound system on bridge

Deck & Hull

Forward to port is large tackle center housing freezer, drink cooler, sink w/tackle 5 drawers

Engine Room access under Salon door. Live bait well on transom.

Spare props under passageway sole. Head Hunter Mach 5 freshwater pump under sole New fiberglass deck installed.

Freshwater washdown. Transom door with gate. 2 Stereo speakers 6 Rod holders. Rupp Tripple spreader outriggers Center rigger

FLY BRIDGE

3 Pompanette helm chairs,

L shaped seating of front of helm,

New cushions 6 Rod holders on aft rail, Stereo speakers, Chart holder 2 Quartz lights

Salon and cabin

AC new in 2015 w/updated SMX 11 controls Complete 2016 Bottom

Maintenance has been completed at Marina Mile Yachting Centre, Fort Lauderdale that includes complete sanding prep and the application of two coats of anti-fouling paint. The hull was detailed at the same time and a new transducer was installed to accommodate the new bottom sounder being installed. Topsides completely painted.

Engine Room

Detroit Diesel Key Power BKX 1271 TI's 980 HP,

Onan 15 KW generators w/sound shield - 650 and 750 hours-CHANGED TO 220v,

Oil change system 12, 32, 110, 220V 20 Gal.

Hot Water Heater,

2 x 32V chargers,
12V charger,
Tides Dripless shaft logs w/spare seals,
Air compressor 110V Air horns dual trumpet,
220 V electric Crash pump,
Algae X Double racors on main engines,
Racors on generators,
220V AC pump, 2 AC compressors,
Hynautic Steering,
Bennett Trim Tabs replaced 2016
CO2 Fire system,
Auto & Manual Blowers (2),
New PVC rub rails w/stainless steel Striker,
30 Gallon oil res.

Construction Features

The Bertram 54 is one of the finest boats ever built in this size range. Some of her top quality construction features include: Hand laid fiberglass hull, through bolted and bonded hull to deck shoebox joint, Isophthalic gelcoat, metal backing plates on stress bearing hardware, custom fiberglass fuel tanks, custom metal engine foundations, all bronze thru hulls, highest grade SS fasteners, leaded foam insulation, highest grade color coded marine wiring, copper bonding system, extruded aluminum rub rails

Recent Maintenance

November 2015

- Engines completely gone through and valves adjusted all cylinders, port motor new cylinder head, new injectors, turbo, and 2 x pistons and liners as per invoice.
- Inspection of cylinder liners revealed cross hatching present all cylinders
- Main Engines Oil, Lube and Filters
- All Hose Clamps replaced
- Fuel Tank sight glasses removed and sealed
- Entire Bilge Pump System inspected and test. Parts replaced as indicated
- Generators (2) regular maintenance Oil, Lube and Filters – port generator new stator, new fresh water pump, starboard new fresh water circulating pump.
- New Fresh Water Wash-Down Pump installed;

February 2016

- Complete Compound & Wax of hull
- Vessel completely painted with Awlgrip from and including deck up;
- Rudder bearings replaced;
- Rudder ram replaced;
- Cockpit Freezer compressor replaced;
- AC units replaced;
- All new starting batteries for engines;
- Vessel converted from 110V AC to 220v AC;
- All macerator pumps for toilets replaced;
- Blackwater tank serviced and pump replaced;
- Sterio system in saloon and on fly-bridge replaced;
- New anchor and chain

- New flat screen TV

November 2016

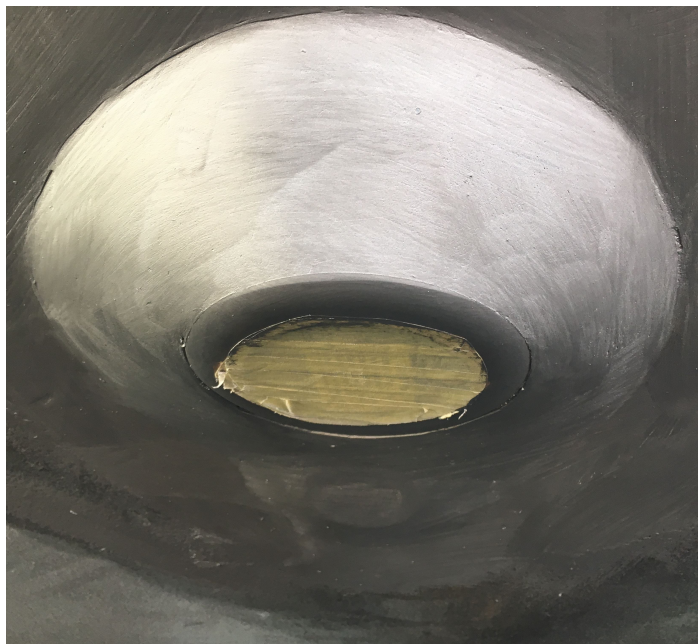
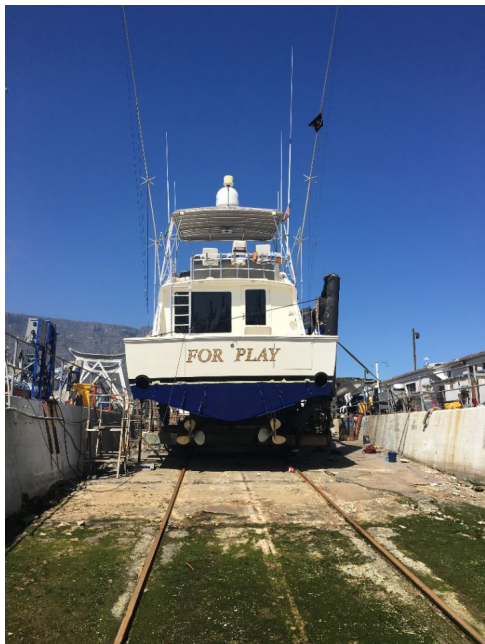
- Vessel slipped , underwater hull painted;
- New Zinc Anodes;
- Replaced propellers; spare set onboard
- All new injectors on both engines
- Replaced trim tabs with new
- Replaced life raft with Viking 6 man commercial raft;
- Replaced fresh water pressure pump;
- Replaced emergency bilge pump with 220V;
- Checked and serviced all 12V bilge pumps & float switches - replaced one;
- Replaced microwave oven
- Overhauled air compressor on port main engine;
- Replaced the air accumulator tank
- Replaced domestic water pressure tank
- SAMSA surveyed for operations up to 200NM from shore as a pleasure boat.

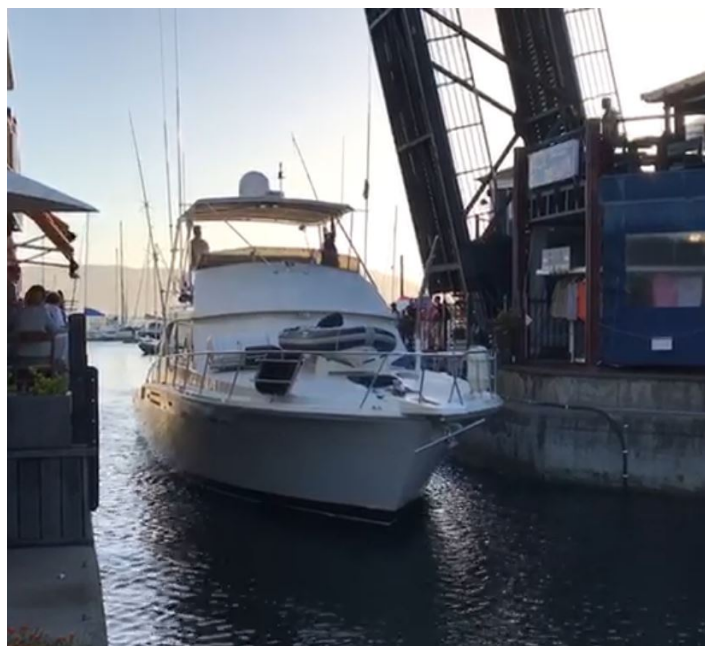
February / March 2017

- New carpets throughout
- New main engine battery charging alternators
- New bridge rev counters
- New Bimini cover
- New console cover
- New bridge knee pads
- New bridge cushions
- New washing machine – 220V
- New tumble dryer – 220V
- Boat slipped annually (11/2017), Transducer replaced. Both ME seacocks removed serviced and replaced:

February 2018

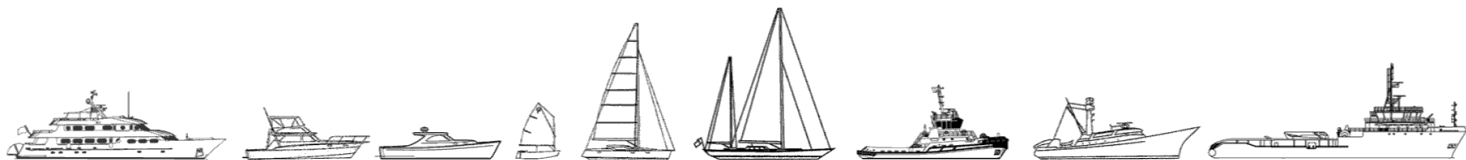
- New Infanta semi rigid 3,1m Inflatable
- New Mercury 9.9hp outboard motor + 3hours in 2018
- New launch davit for RIB
- New Horizon Seafari Watermaker – 1000l/day fresh water
- New Lofrans 24V anchor windlass
- Port side of saloon relined with oak panels.
- Steering ram removed and reconditioned;
- Gearbox coolers removed and cleaned;
- Boat went to Luderitz, Namibia and back to CT in 2017- 1000NM round trip.
- Boat went to Knysna for winter layup and back to Cape Town in 2018-500NM round trip.







The details of all vessels are offered in good faith but we cannot guarantee or warrant the accuracy of this information nor warrant the condition of the vessel. Any buyer should instruct their agents, or their surveyors, to investigate such details as the buyer desires validated. This vessel is offered subject to sale, price change, location or withdrawal without notice.



AUSTRALIA - BULGARIA - INDIA - INDONESIA - ITALY - MALAYSIA - NEW ZEALAND - PANAMA - PHILIPPINES - SINGAPORE - SPAIN - UK - USA - VENEZUELA - VIETNAM