



SEA BOATS

MARINE BROKERS WITH A GLOBAL APPROACH

AUSTRALIA - BULGARIA - INDIA - INDONESIA - ITALY - MALAYSIA - NEW ZEALAND - PANAMA - PHILIPPINES - SINGAPORE - SPAIN - UK - USA - VENEZUELA - VIETNAM

sales@seaboats.net - www.seaboats.net

NEW BUILD - T33 Basic Line Fishing Boat



Listing ID - 1254440

Description T33 Basic Line Fishing Boat

Date Built to Order

Launched

Length 13.85m (45ft 5in)

Beam 5m (16ft 4in)

Draft 2m (6ft 6in)

Location Western Cape South Africa

Broker Geoff Fraser
geoff.fraser@seaboats.net
+64 21 61 222 5

Price US \$450,000, ex-works

Our vessels are built for various fishing applications including bottom trawling, purse seining, long lining, mining, squid fishing and research, and many vessels are custom built to satisfy the customer's every need. Vessels are designed with a large hold capacity, yet still maintain spacious engine room and accommodation areas. Many of the vessels are built to include more than one application to allow for products to be processed at sea. The material is also so versatile that a range of sizes are available from 33 feet to 100 feet based on existing moulds.

Length overall: 13.85m

Length between perpendiculars: 12.20m

Beam: 5m

Draft: 2m

Gross tonnage: 24.90 t

Hold: 32 cub m

Fuel capacity: 5 000 liters

Fresh water capacity: 1000 liters

Crew: 16 men

Safety equipment for: 16 men

HULL, DECK, BULKHEADS ETC

Hull, deck, bulkheads, gunwhale, wheelhouse and watertanks in GRP

Diesel tanks in GRP.

Insulation

Hold insulation: 100 mm

Bulkheads: 150 mm

ENGINE & PROPULSION

Main engine: Doosan 180HP (Heat exchange)

Heavy duty Dong-I gearbox

65mm 316 Stainless Steel shaft

Stern gear in manganese bronze

Propeller 4 blade

Rudder & Stuffing box

INSTALLATION OF THE FOLLOWING

Main engine and stern gear

Exhaust system for main engine in stainless steel

Controls for speed and gearbox

Plumbing and filtration for fuel system for main and gen set

Piping for cooling system

Fully hydraulic system with autopilot solenoid

Three seacocks bronze

Fresh and seawater pump system

Electrical system - 24V

Gas burner 2 plate

SAFETY EQUIPMENT: CAT A1(A)

As per South African Maritime Safety Authority Specifications

ELECTRONICS

Electronics Owner to specify

OPTIONAL EQUIPMENT

Hold ponds with cleats and varnished (Rubol)

Deck laaitjies 8 per side

12mm ply 3 layers glassed over and flocoated

Partition in hold for blast freezer

Aft storage platform in st. steel

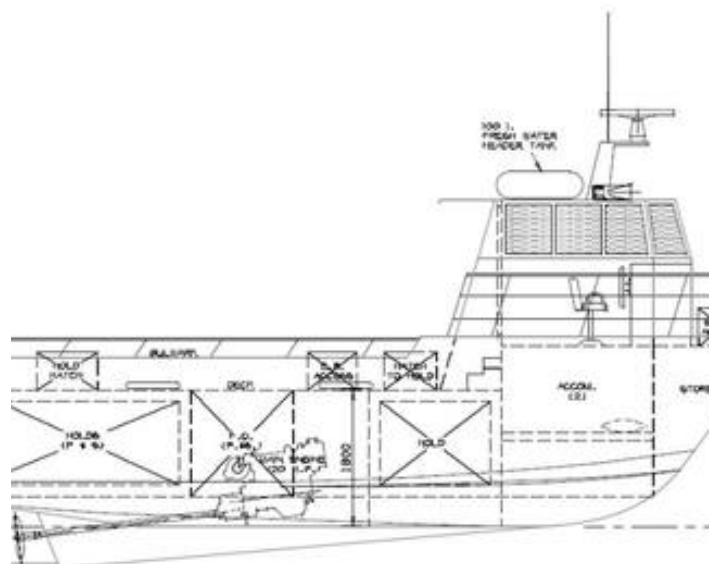
Fit refrigeration equipment with condenser piping

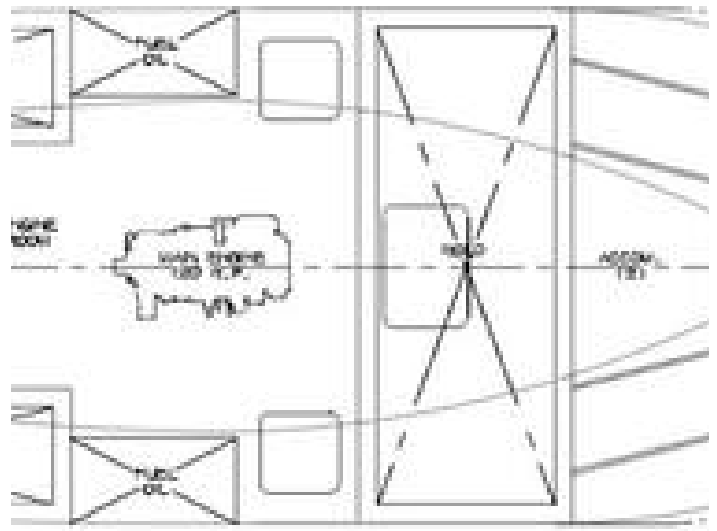
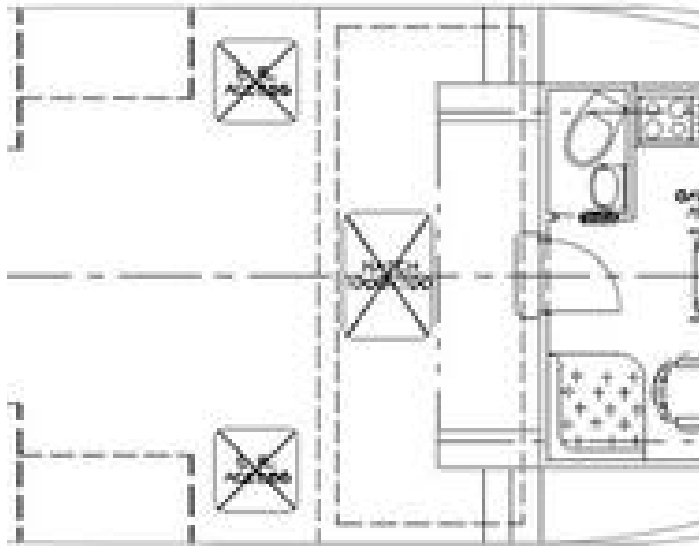
Manufacture galv racking for 2 tons

Installation of one gen set

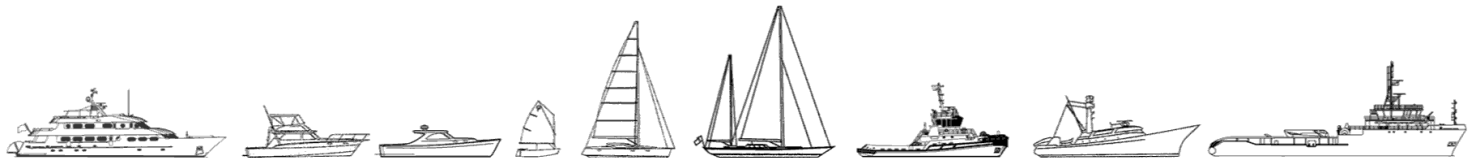
Gen set 75KVA Lovol

Electrical system 220/380 V





The details of all vessels are offered in good faith but we cannot guarantee or warrant the accuracy of this information nor warrant the condition of the vessel. Any buyer should instruct their agents, or their surveyors, to investigate such details as the buyer desires validated. This vessel is offered subject to sale, price change, location or withdrawal without notice.



AUSTRALIA - BULGARIA - INDIA - INDONESIA - ITALY - MALAYSIA - NEW ZEALAND - PANAMA - PHILIPPINES - SINGAPORE - SPAIN - UK - USA - VENEZUELA - VIETNAM