



# SEA BOATS

MARINE BROKERS WITH A GLOBAL APPROACH

AUSTRALIA - BULGARIA - INDIA - INDONESIA - ITALY - MALAYSIA - NEW ZEALAND - PANAMA - PHILIPPINES - SINGAPORE - SPAIN - UK - USA - VENEZUELA - VIETNAM

[sales@seaboats.net](mailto:sales@seaboats.net) - [www.seaboats.net](http://www.seaboats.net)

## NEW BUILD - 26.5m Purse Seiner



### Listing ID - 1255403

Description	26.5m Purse Seiner
Date Launched	New Build
Length	26.5m (86ft 11in)
Beam	7.45m (24ft 5in)
Draft	4m (13ft)
Location	South Africa
Broker	Geoff Fraser <a href="mailto:geoff.fraser@seaboats.net">geoff.fraser@seaboats.net</a> +64 21 61 222 5
Price	POA

These vessels are built for various fishing applications including bottom trawling, purse seining, long lining, mining, squid fishing and research, and many vessels are custom built to satisfy the customer's every need. Vessels are designed with a large hold capacity, yet still maintain spacious engine room and accommodation areas. Many of the vessels are built to include more than one application to allow for products to be processed at sea. The material is also so versatile that a range of sizes are available from 33 feet to 100 feet based on existing molds.

### Specifications

Vessel Condition: New Build

Vessel Type: Purse Seiner

Builder: Tallie Marine

Model: Purse Seiner

Nominal Length: 26.50m

Length Over all: 26.50m  
Beam: 7.45m  
Maximum Draft: 4m  
Hull Material: Glass Fibre  
Hull Type: Semi Displacement  
Displacement: 210 metric tons  
Fuel Capacity: 22000 Litres  
Water Capacity: 3000 Litres  
Holding Tank Capacity: 300 Cubic Metres  
Heads: 12  
No. of Engines: 1  
Engine Model: MTU 8V400  
Engine Power: 1000HP  
Fuel Type: Diesel  
Drive Type: Stern Drive  
Cruising Speed: 10 knots  
Maximum Speed: 11 knots

### **Engine(s)**

Main engine -MTU 8V400 with gearbox WAF542L 3.99-1  
130mm 316 Stainless steel shaft. (Duplex s. steel)  
130mm Stern gear complete  
Four blade propeller  
Rudder stock and rudder  
1 X Doosan LO66TI 120KVA

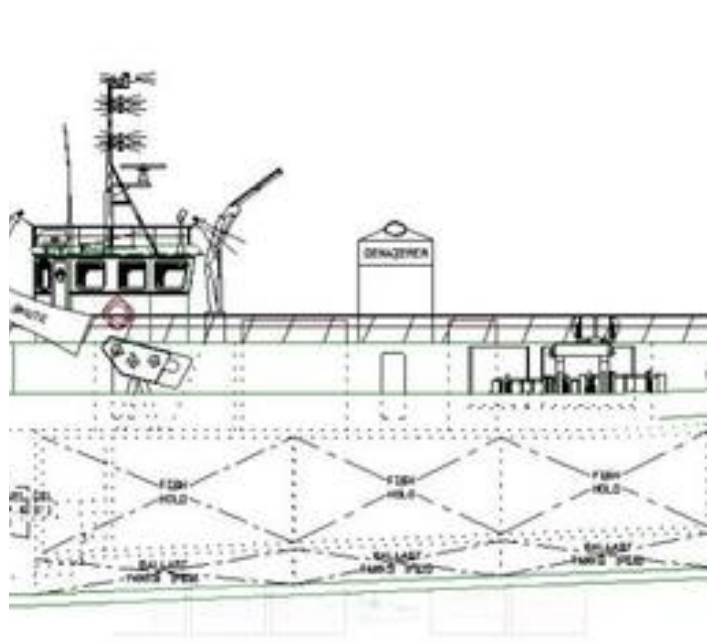
### **Construction**

Hull, deck, bulkheads, whale deck, halve shelter deck,  
and super structure.  
Water and diesel tanks in GRP.  
Six separate holds. (Two bulkheads fore/aft & one diagonally)  
Insulation  
Perforated plating on centre partition

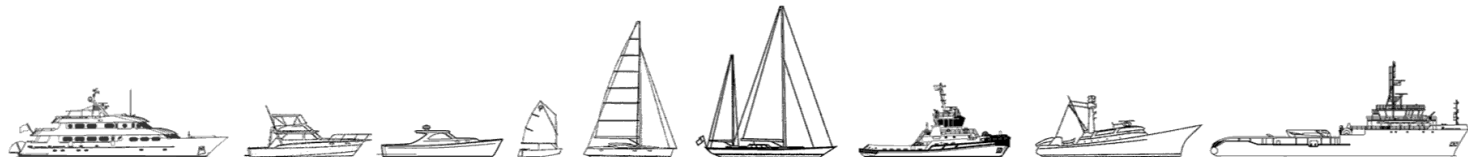
### **Equipment**

Main engine and stern gear  
Two auxiliary engine  
Exhaust systems - Outside engine room - stainless steel  
3.1 Main engine  
3.2 One aux engines  
Keel cooler for main engine and generator set  
Plumbing and filtration for fuel systems  
Piping for cooling system for main engine and gen sets  
Fully hydraulic steering system  
3 Seacocks in stainless steel 90mm  
Fresh water system  
Electrical system 24/220/380V transformer included  
Sea water system for bilges, holds, deck wash and fire main

Three x 60,000 lph bronze pumps  
Stern and bow thruster Installation only  
Standby system for radios  
Supply and fit one x sonar tanks  
Supply and fit bull wark roller system  
Fit deck equipment  
including fish Shute and dewatering overboard  
Supply and fit cooler for hydraulic system  
Supply and fit deck equipment as per PETEC



The details of all vessels are offered in good faith but we cannot guarantee or warrant the accuracy of this information nor warrant the condition of the vessel. Any buyer should instruct their agents, or their surveyors, to investigate such details as the buyer desires validated. This vessel is offered subject to sale, price change, location or withdrawal without notice.



AUSTRALIA - BULGARIA - INDIA - INDONESIA - ITALY - MALAYSIA - NEW ZEALAND - PANAMA - PHILIPPINES - SINGAPORE - SPAIN - UK - USA - VENEZUELA - VIETNAM