



SEABOATS

MARINE BROKERS WITH A GLOBAL APPROACH

AUSTRALIA - BULGARIA - INDIA - INDONESIA - ITALY - MALAYSIA - NEW ZEALAND - PANAMA - PHILIPPINES - SINGAPORE - SPAIN - UK - USA - VENEZUELA - VIETNAM

sales@seaboats.net - www.seaboats.net

300ft Offshore Vessel



Listing ID - 1279

Description 300ft OSV

Date 2003

Launched

Length 91.44m (300ft)

Beam 18.29m (60ft)

Draft 7.32m (24ft)

Broker John Kearns
john.kearns@seaboatsbrokers.com
+64 21 400 805

Hull: 218

Vessel Type: Platform Supply Vessel

Year Built: 2003

Shipyard: North American Fabricators

DIMENSIONS

Loa: 91.44m

Beam: 18.29m

Draft: 7.32m

Draft (Lightship): 7 ft. 6 in. (2.29 m)

Draft (Loadline): 19 ft. 6 in. (5.87 m)

Clear Deck: 223 ft. x 50 ft. 7 in. (67.97 m x 15.42 m)

Cargo Deck Area: 11,280 sq. ft. (1,047.95 sq. m)

Deck Strength: 1,200 lb/sq. ft. (5,615.88 kg/sq. m)

Deadweight Tonnage: 5,004.71 LT (5,084.79 MT)

CAPACITIES

Fuel Oil: 272,983 gals. (1033.35 cu. m)
Ballast: 321,265.2 gals. (1216.12 cu. m)
Potable Water: 32,998 gals. (124.9 cu. m)
Dry Bulk: 11,440 cu. ft. @ 80 psi (323.94 cu. m @ 5.5 bars)
Liquid Mud (Dedicated); 3,294.2 barrels (523.74 cu. m)
Liquid Mud/Recovered Oil: 12,349.2 barrels (1,963.4 cu. m)
Service Tanks: Eleven (11) x 13,481.4 gallons (51.03 cu. m)
Methanol: 1,836.2 barrels (292 cu.m)

MACHINERY

Main Engines: Two (2) 3608 CAT Diesels, 6,600 BHP
Bow Thrusters: One (1) 1,100 HP Swing Up
Bow Thrusters: One (1) 1,300 HP Tunnel
Stern Thrusters: One (1) 1,300 HP Tunnel
Speed: 12 knots
Generators: Two (2) x 910 kW, One (1) x 190 kW emergency

SPECIAL FEATURES

Ship Motion: Two (2) Passive Type Anti-Roll Tanks
Ship Motion: Bilge Keels
Positioning: DP 2
Deck Crane: One (1) x 3,100 lbs. capacity

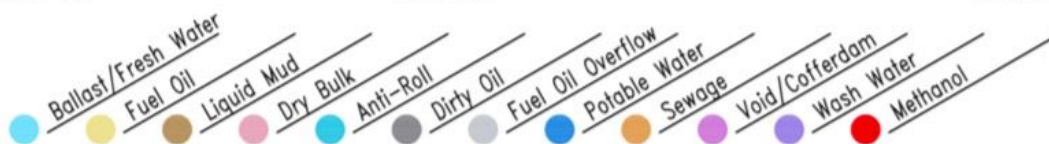
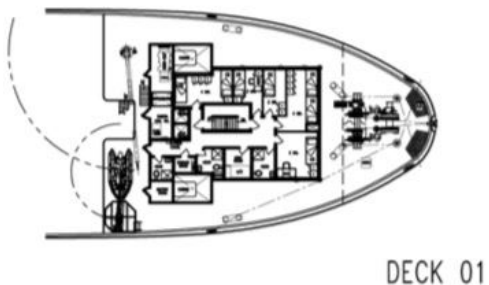
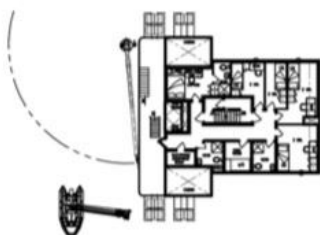
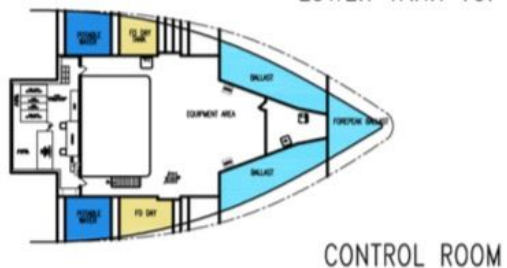
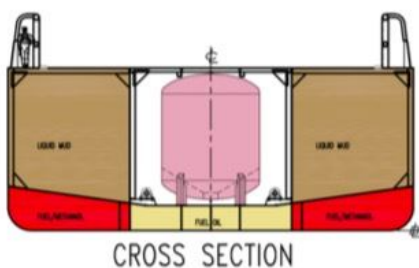
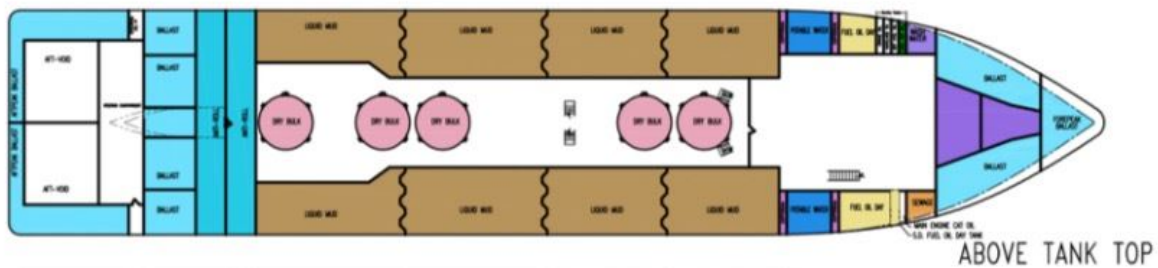
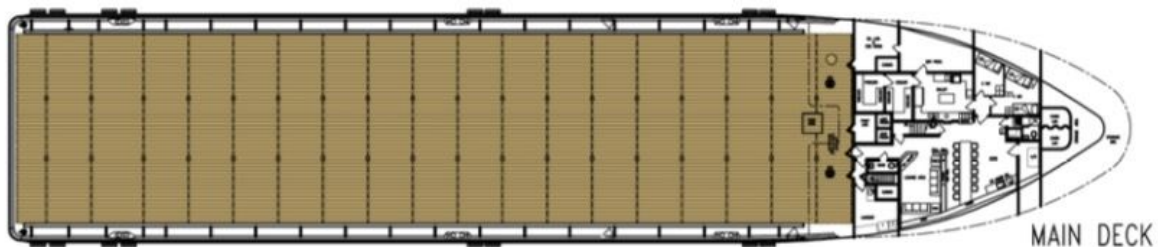
LIFE SAVING EQUIPMENT

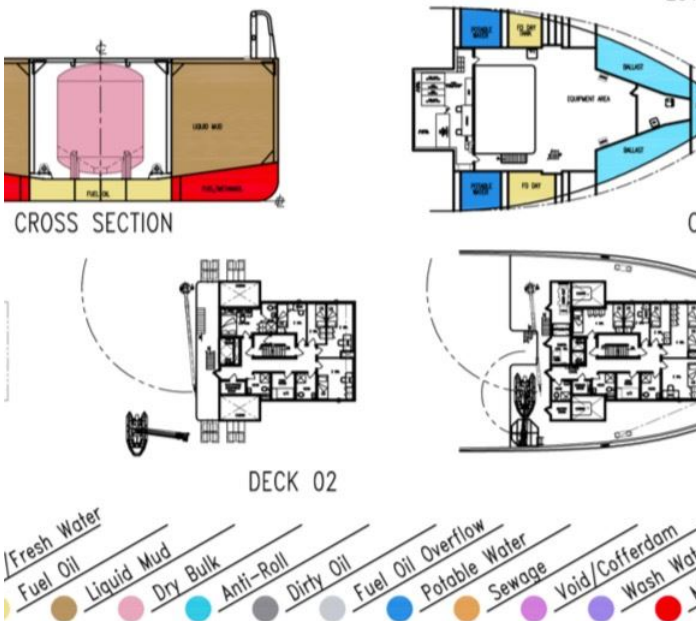
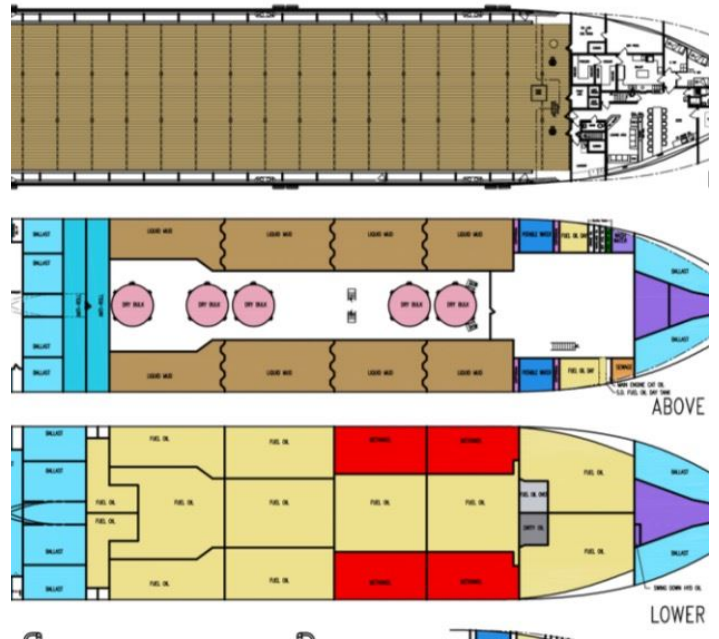
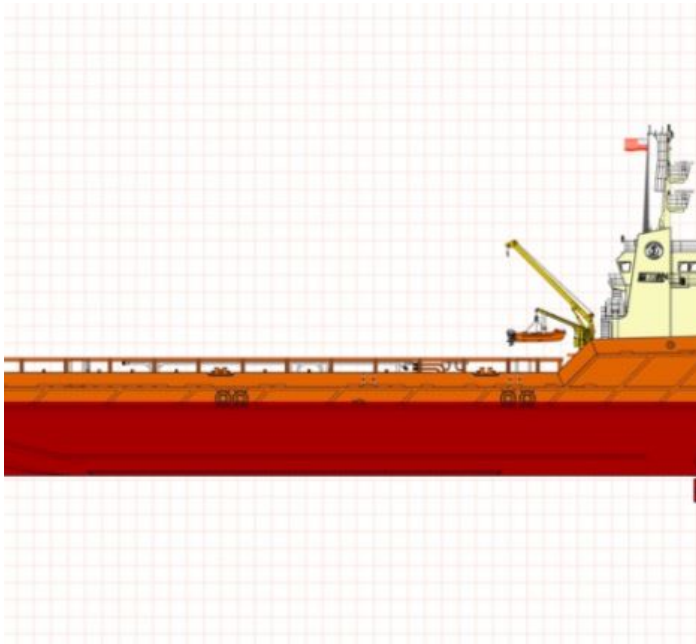
Life Rafts: Two (2) x 25-Man Inflatable Life Rafts
Life Rafts: Two (2) x 10-Man Inflatable Life Rafts
Life Rafts: Two (2) x 20-Man Inflatable Life Rafts
Rescue Boat/Craft: One (1) x Sea Force 490 SOLAS O/B Rescue Boat
Other gear as required by authorities

CLASSIFICATION

ABS: Maltese Cross A1 (Hull)
ABS: Maltese Cross AMS (Machinery)
ABS: Loadline
ABS: Subchapter L (OSV)
ABS: Maltese Cross DPS-2
ABS: Oil Recovery Capability Class 1
SOLAS: SOLAS 2000
MARPOL: 2001

ACCOMMODATIONS: 29





The details of all vessels are offered in good faith but we cannot guarantee or warrant the accuracy of this information nor warrant the condition of the vessel. Any buyer should instruct their agents, or their surveyors, to investigate such details as the buyer desires validated. This vessel is offered subject to sale, price change, location or withdrawal without notice.

