



# SEABOATS

MARINE BROKERS WITH A GLOBAL APPROACH

AUSTRALIA - BULGARIA - INDIA - INDONESIA - ITALY - MALAYSIA - NEW ZEALAND - PANAMA - PHILIPPINES - SINGAPORE - SPAIN - UK - USA - VENEZUELA - VIETNAM

[sales@seaboats.net](mailto:sales@seaboats.net) - [www.seaboats.net](http://www.seaboats.net)

## 28m Motoryacht – Expedition Style Long Range Cruiser - NEW BUILD



### Listing ID - 1371

**Description** 28m Motoryacht

**Date** New Build

**Launched**

**Length** 28.50m (93ft 6in)

**Beam** 7.21m (23ft 7in)

**Draft** 2.35m (7ft 8in)

**Location** Italy

**Broker** Clive Bennett

[clive.bennett@seaboatsbrokers.com](mailto:clive.bennett@seaboatsbrokers.com)  
+64 27 494 9799

**Price** EUR 7,080,000 (Ex VAT)

### Overview:

This outstanding and versatile vessel is from a prominent Italian Shipyard. The Enjoy Yachts line is designed for Owners looking to experience Expedition style cruising and enjoy the yacht in different ways. Including those who love to host guests and organize events and/or parties on board taking advantage of the generous outdoor spaces. Also, equally for the traditional seafarer family that prefers to have fewer guests on board and to enjoy more space for their favourite sports, water games and toys.

This vessel is also suitable as a support craft for larger superyachts, to accommodate additional guests, equipment and crew.

As shown in the plans and renderings there are options for the new owners to specify a preferred interior layout.

### Specification:

LOA: 28.5m

Length Lh ISO 8666: 23.95m

Beam Max: 7.21m

Beam w.L.: 6.95m

Draft: 2.35m

Displacement: 165 ton

### **CONSTRUCTION MATERIAL**

Hull material: Steel Fe510 (AH-36)

Superstructures: Aluminium AA5083 (Al-Mg4.4)

### **MAIN ENGINES – PERFORMANCE**

Main Engine: 2x MAN 412kw (560 CV)

Max speed knots: 12.5

Cruising speed knots: 10

Range at cruising speed miles: 3000

### **TANKS CAPACITY**

Fuel tanks: 30,000 litres

Daily fuel tanks: 1,500 litres

Fresh Water tanks: 3,000 litres

Grey / black water tanks: 700 + 700 litres

Sludge / Bilge tanks: 300 litres

### **CERTIFICATION**

Certification: CE Cat. "A"

Certifier: RINA

### **ANCHORS – CHAINS**

Anchors: 2x 120 kgs

Shackles of chains / diameter: 2x 6 / 14mm

### **WINDLASS – CAPSTANS**

Electric Windlass: 2x 4kw 380V

Stern Capstans: 2x 3kw

### **SHAFTS – PROPELLERS – RUDDER**

Tailshafts: 2x diam 90

Propellers: 2x 5 fixed blades

Rudders: 2x spada (sword)

### **MANOEUVRING PROPELLERS – STABILIZERS**

Bowthruster: 1x 38kw

Fins stabilizers: Zero Speed electric

Engine radio control or 2<sup>nd</sup> station

### **MAIN AUXILIARIES**

Generators: 2x 40kW

Air conditioning: 180,000 BTU

Watermaker: 1x 300 lt/h

Black Water Treatment:1

Alfa Laval: 1

Fresh Water pump: 2

Boiler: 2x 100 litres  
Galley sink with macerator  
Compressed air system  
Battery Charge: 2  
Inverter 5kw  
Cameras: 3  
Monitor Video Control: 1  
Washing Machine: 1  
Dryer Machine: 1  
Dishwasher: 1  
Monitoring and control touch screen: 4  
Icemaker in the galley and upper deck

### **DECK ACCESSORIES**

Gangway length over platform  
Hydraulic stern platform capacity  
Bathing ladder  
Crane  
Search light  
Electric Cable Winder  
Fridge on the upper deck  
Under Water lights  
Various bimini and cover  
Inflatable fenders  
Life Rafts  
Shower at stern and upper deck

### **NAVIGATION SYSTEM**

2x monitor in wheelhouse  
1 Radar  
1 Echosounder  
1 Automatic Pilot  
1 Magnetic Compass  
1 VHF DSC  
1 VHF  
1 EPIRB  
1 GPS

### **ENTERTAINMENT**

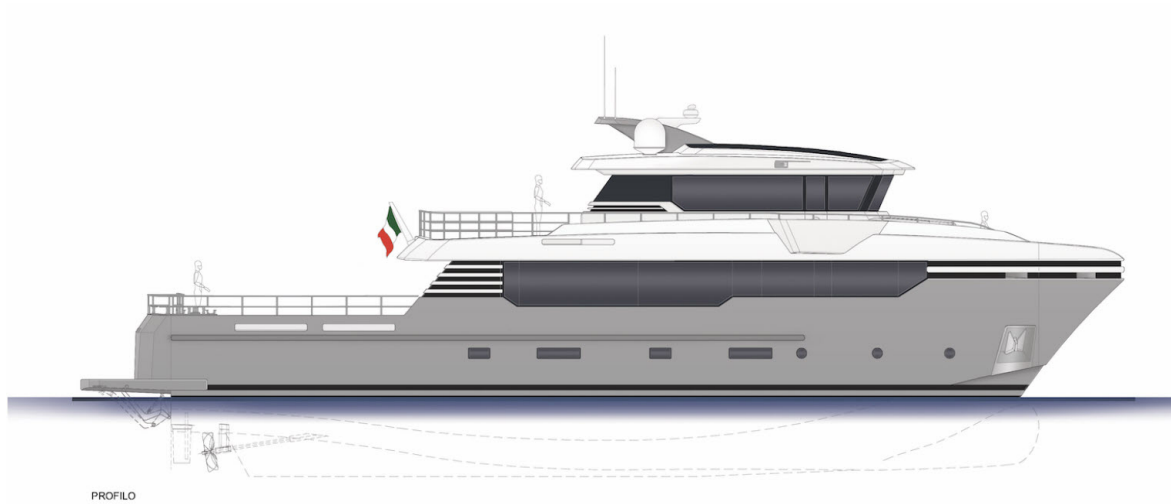
TV 40" in the guest cabins  
TV 46" in the owner's cabin  
TV 50" in the saloon  
TV 55" in the upper lounge  
TV in the crew mess  
Wifi in each cabin / saloon  
Satellite antenna TV diameter 40"  
Digital Terrestrial Antenna  
Stereo System Inside and Outside

## ACCOMMODATION

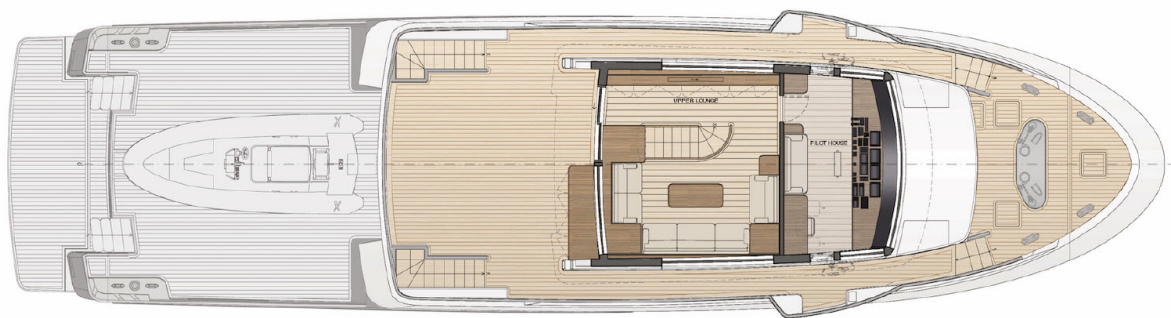
Owner's cabin with bathroom  
Double Guests Cabin with bathroom  
Twin Guests Cabin with bathroom  
Saloon with dinner area  
Upper Lounge  
Day Toilette  
Galley  
Crew Cabin with bath  
Captain's Cabin with bath  
Crew Dinette

## EXTRA

Aluminium version Semi-displacement: EUR 800,000  
Engines 2x MAN 478 kW (650HP): EUR 56,000  
Engine Radio control or 2<sup>nd</sup> Station  
Stern Thruster  
2<sup>nd</sup> Watermaker 300 litres / hr  
Sat phone  
Metallic Paint  
Thermal Camera  
Jacuzzi  
Tropical Air Conditioning







UPPER DECK



MAIN DECK



MAIN DECK



LOWER DECK



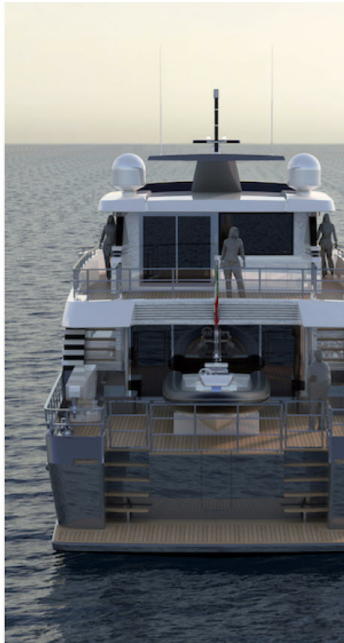
LOWER DECK



LOWER DECK



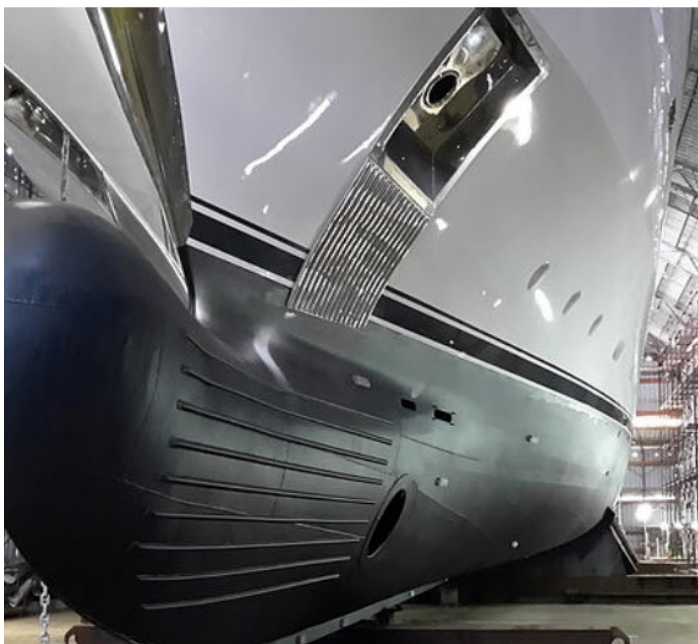




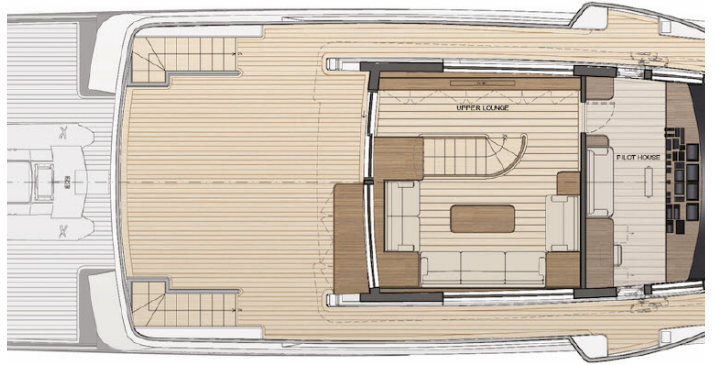
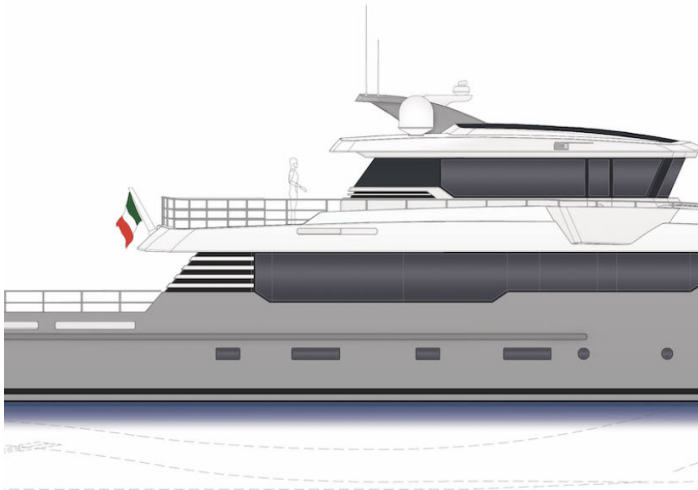


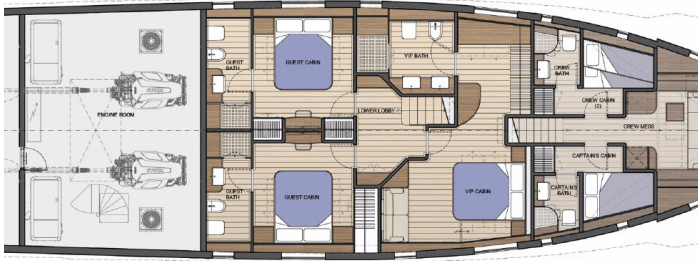




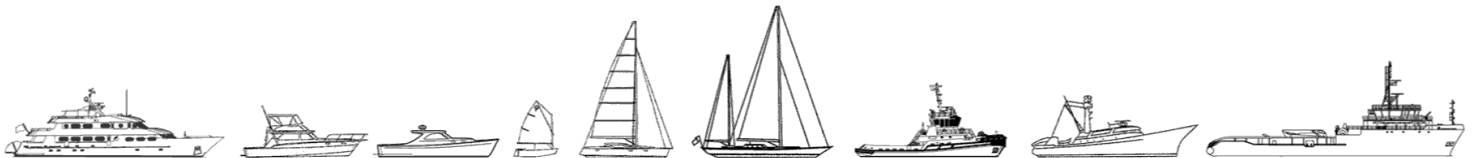








The details of all vessels are offered in good faith but we cannot guarantee or warrant the accuracy of this information nor warrant the condition of the vessel. Any buyer should instruct their agents, or their surveyors, to investigate such details as the buyer desires validated. This vessel is offered subject to sale, price change, location or withdrawal without notice.



AUSTRALIA - BULGARIA - INDIA - INDONESIA - ITALY - MALAYSIA - NEW ZEALAND - PANAMA - PHILIPPINES - SINGAPORE - SPAIN - UK - USA - VENEZUELA - VIETNAM