



SEABOATS

MARINE BROKERS WITH A GLOBAL APPROACH

AUSTRALIA - BULGARIA - INDIA - INDONESIA - ITALY - MALAYSIA - NEW ZEALAND - PANAMA - PHILIPPINES - SINGAPORE - SPAIN - UK - USA - VENEZUELA - VIETNAM

sales@seaboats.net - www.seaboats.net

28m Motoryacht – Luxury Long Range Cruiser



Listing ID - 1379

Description	28m motoryacht
Date Launched	Under Construction
Length	28.50m (93ft 6in)
Beam	7.21m (23ft 7in)
Draft	2.35m (7ft 8in)
Location	Italy
Broker	Clive Bennett clive.bennett@seaboatsbrokers.com +64 27 494 9799
Price	EUR 7.080.000,00 (Ex VAT)

Overview:

This outstanding and versatile vessel is currently under construction in a prominent Italian Shipyard. It has been designed for Owners who want to experience the sea without compromise and appreciate comfortable outdoor spaces and equally comfortable interiors. It is ideally suited for both personal use and potential for charter business. As shown in the interior plans it is offered with 3 or 4 cabins, and a version with 5 cabins. From the maritime point of view the vessel has well-engineered constructive qualities and safe navigation systems.

LOA: 28.5m
Length Lh ISO 8666: 23.95m
Beam Max: 7.21m
Beam w.l.: 6.95m
Draft: 2.35m
Displacement: 165 ton

CONSTRUCTION MATERIAL

Hull material: Steel Fe510 (AH-36)

Superstructures: Aluminium AA5083 (Al-Mg4.4)

MAIN ENGINES – PERFORMANCE

Main Engine: 2x MAN 412kw (560 CV)

Max speed knots: 12.5

Cruising speed knots: 10

Range at cruising speed miles: 3000

TANKS CAPACITY

Fuel tanks: 30,000 litres

Daily fuel tanks: 1,500 litres

Fresh Water tanks: 3,000 litres

Grey / black water tanks: 700 + 700 litres

Sludge / Bilge tanks: 300 litres

CERTIFICATION

Certification: CE Cat. "A"

Certifier: RINA

ANCHORS – CHAINS

Anchors: 2x 120 kgs

Shackles of chains / diameter: 2x 6 / 14mm

WINDLASS – CAPSTANS

Electric Windlass: 2x 4kw 380V

Stern Capstans: 2x 3kw

SHAFTS – PROPELLERS – RUDDER

Tailshafts: 2x diam 90

Propellers: 2x 5 fixed blades

Rudders: 2x spada (sword)

MANOEUVRING PROPELLERS – STABILIZERS

Bowthruster: 1x 38kw

Fins stabilizers: Zero Speed electric

Engine radio control or 2nd station

MAIN AUXILIARIES

Generators: 2x 40kW

Air conditioning: 180,000 BTU

Watermaker: 1x 300 lt/h

Black Water Treatment:1

Alfa Laval: 1

Fresh Water pump: 2

Boiler: 2x 100 litres

Galley sink with macerator

Compressed air system

Battery Charge: 2
Inverter 5kw
Cameras: 3
Monitor Video Control: 1
Washing Machine: 1
Dryer Machine: 1
Dishwasher: 1
Monitoring and control touch screen: 4
Icemaker in the galley and upper deck

DECK ACCESSORIES

Gangway length over platform
Hydraulic stern platform capacity
Bathing ladder
Crane
Search light
Electric Cable Winder
Fridge on the upper deck
Under Water lights
Various bimini and cover
Inflatable fenders
Life Rafts
Shower at stern and upper deck

NAVIGATION SYSTEM

2x monitor in wheelhouse
1 Radar
1 Echosounder
1 Automatic Pilot
1 Magnetic Compass
1 VHF DSC
1 VHF
1 EPIRB
1 GPS

ENTERTAINMENT

TV 40" in the guest cabins
TV 46" in the owner's cabin
TV 50" in the saloon
TV 55" in the upper lounge
TV in the crew mess
Wifi in each cabin / saloon
Satellite antenna TV diameter 40"
Digital Terrestrial Antenna
Stereo System Inside and Outside

ACCOMMODATION

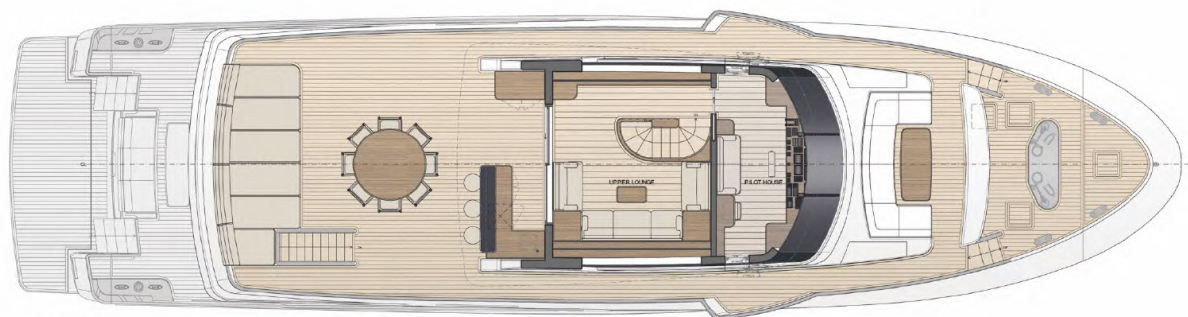
Owner's cabin with bathroom
Double Guests Cabin with bathroom
Twin Guests Cabin with bathroom

Saloon with dinner area
Upper Lounge
Day Toilette
Galley
Crew Cabin with bath
Captain's Cabin with bath
Crew Dinette

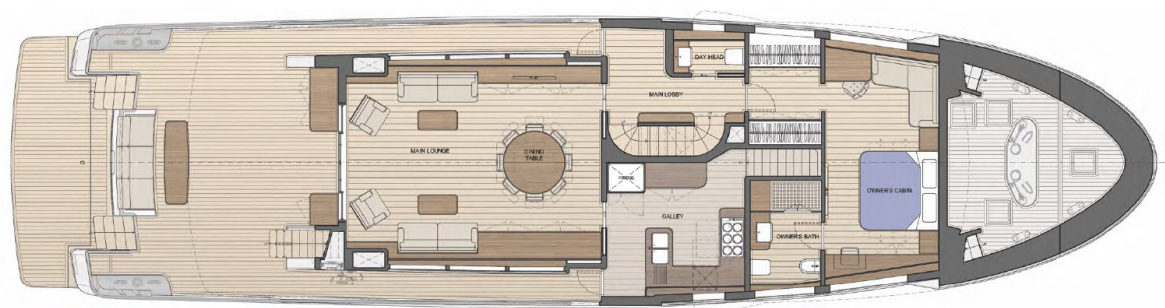
EXTRA

Aluminium version Semi-displacement: EUR 800,000
Engines 2x MAN 478 kW (650HP): EUR 56,000
Engine Radio control or 2nd Station
Stern Thruster
2nd Watermaker 300 litres / hr
Sat phone
Metallic Paint
Thermal Camera
Jacuzzi
Tropical Air Conditioning

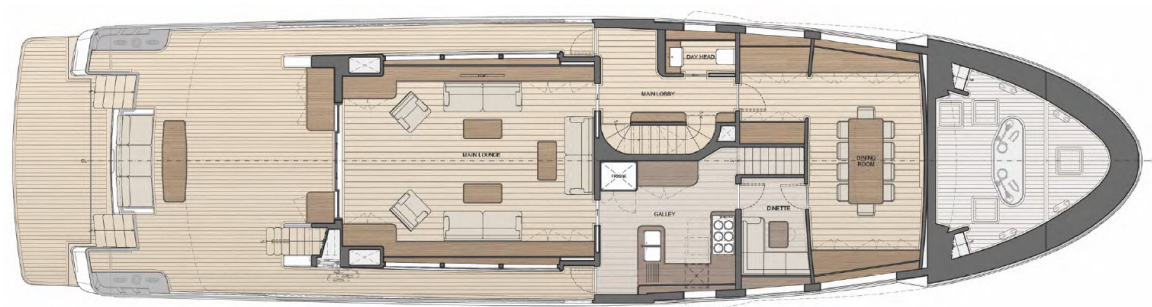




UPPER DECK



MAIN DECK "A"



MAIN DECK "B"

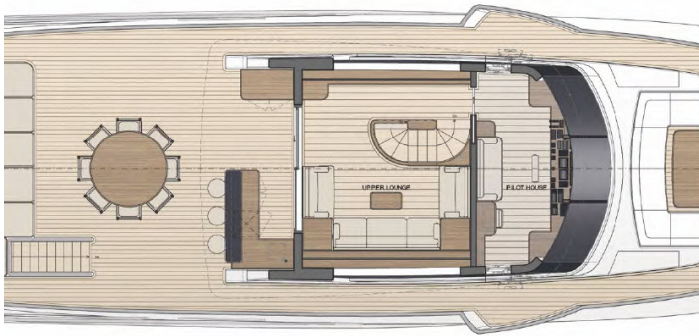


LOWER DECK "A"









The details of all vessels are offered in good faith but we cannot guarantee or warrant the accuracy of this information nor warrant the condition of the vessel. Any buyer should instruct their agents, or their surveyors, to investigate such details as the buyer desires validated. This vessel is offered subject to sale, price change, location or withdrawal without notice.



AUSTRALIA - BULGARIA - INDIA - INDONESIA - ITALY - MALAYSIA - NEW ZEALAND - PANAMA - PHILIPPINES - SINGAPORE - SPAIN - UK - USA - VENEZUELA - VIETNAM