



SEABOATS

MARINE BROKERS WITH A GLOBAL APPROACH

AUSTRALIA - BULGARIA - INDIA - INDONESIA - ITALY - MALAYSIA - NEW ZEALAND - PANAMA - PHILIPPINES - SINGAPORE - SPAIN - UK - USA - VENEZUELA - VIETNAM

sales@seaboats.net - www.seaboats.net

66.6m Maintenance Work Vessel



Listing ID - 1387

Description NEW BUILD - 66.6m Maintenance Work Vessel

Date Launched Launched in 2012, delivered in 2013

Length 66.6m (218ft 6in)

Beam 20m (65ft 7in)

Draft 5m (16ft 4in)

Location ex Shipyard, Malaysia

Broker Geoff Fraser
geoff.fraser@seaboats.net
+64 21 61 222 5

Price POA

Basic function Maintenance / Work Vessel

Vessel Name VY ACCOM

Classification: Bureau Veritas

Notation: BVI \boxtimes _HULL • _MACH, Special Service Maintenance/ Work Vessel, Unrestricted Navigation

Descriptive note Self Propelled Accommodation Vessel, SPS 2006

Gross tonnage 2676 Ton (Approx.)

IMO 9607928

DIMENSIONS

Length O.A: 66.60m

Length B.P: 63.80m

Beam Mld: 20.00m

Depth Mld: 6.50m
Max Draft: 5.00m
Endurance ABT. 35 days
Deadweight 1996.7T

TANK CAPACITY

Daily Fuel oil: 37.6m³
Cargo Fuel Oil: 548.5m³
Cargo fresh water: 549.6m³
SW/FW Ballast: 1004.3m³
Deck Strength 5 Ton/m²
Open Deck Space est. 500

PERFORMANCE

Free running speed: 12 KNOTS F.O. Cons Max Speed ABT. 16T/day
F.O. Cons Service Speed ABT. 10T/day
F.O. Cons Standby Speed ABT. 2.3T/day

PROPULSION SYSTEM

Main Engine: 2X Cummins KTA50-M2, 1600bhp at 1800rpm, 1193kW with Gearbox ratio 5:05:1
Propellers: 2X Mentrade Propulsion FPP, each dia.2000mm. c/w Kort-Nozzle
Steering System: 2X 5.0TM INDEPEDENT STEERING SYSTEM, OVER 2 X 35° STEERING ANGLE
Bow thruster
Engine: 1X Cummins KTA19-M2, 640BHP at 1800rpm
Bow Thruster: 1X TFA-80DHN Kamome Side Thruster

AUXILIARY EQUIPMENT

Network 415V, 50Hz
Marine Generator Engine: 3X Cummins KTA19DM1 each 335 kW at 1500rpm
Emergency Generator Set: 1X Cummins 6CT8.3, 1200 BHP at 1500rpm

PUMP EQUIPMENT

Emergency Fire Pump: 1x 35m³/hr @ 45mTH
H.W. Circle Pump: 1x 3m³/hr @ 15mTH
Bilge Pump & GS / Fire Pump: 1x 75m³ / hr @ 45mTH
Bilge Pump & Ballast / Fire Pump: 1x 75m³ / hr @ 45mTH
FO Transfer Pump: 1x 50m³ / hr @ 57mTH
FO Transfer Pump: 1x 15m³ / hr @ 18mTH
FW Transfer Pump: 1x 60m³ / hr @ 45mTH
Dirty Oil Pump: 1x 8m³ /hr @ 20mTH
Lube Oil Transfer Pump: 1x 3m³ /hr @ 15mTH
SW & FW Pressure Set: 10m³/hr @ 30/50 PSI
SW Pressure Set: 1x 10m³ /hr @ 30/50 PSI
Bilge Separator: 1x 1m³ / hr, 2kg / cm
Fresh Water Maker: 3x 12m³ / day
OWS: 1x 15PPM – 35m³ / hr, @45m TH
Sewage / Grey Water Pump: 2x 15m³ / hr @ 20mTH
Chiller / Freezer
S.W Cooling Pump: 2x 20m³/Hr @ 20mth
ECR Package A/C S.W Cooling Pump: 1x 20m³/Hr @ 20mth

Sewage Treatment Plant: 1x Max. 100 Persons

Water Heater: 2x 323 Liter

DECK LAY OUT

Offshore Pedestal

Crane 1X 25 Ton Lifting Capacity, Hydraulic Outreach API2C.red6 compliant

Crane SWL

25Ton 20m Outreach

5 Ton 43m Outreach

4 point Mooring

Winch 4X SWL 40 Tons Hyd. Single Drum Mooring Winch c/w 4 Unit Universal fairlead & central control console at Wheelhouse

Hydraulic Anchor Windlass: 1X 8.2 Ton capacity, 44mm x 27.5m U2 grade Anchor chain

Capstan Winch: 2X Vertical SWL 60 Tons Single Drum

Gangway 1X 19.65m(L)x1.2m(W) x3.06m(H) SWL 5T

Pennant Buoy 6X SWL 5Ton

ACCOMMODATION

Berths: One (1) men Room x 4

Two (2) men Room x 4

Four (4) men Room x 22

Berths total: 100 Men

Recreation Room, Prayer Room, Gym Room, Meeting Room, Officer Room and Medical Room.

NAVIGATION & COMMUNICATION EQUIPMENT (A1 + A2 + A3)

VHF: 2x Furuno, FM-8800s

Radar Transponder: 2X Samyung Modal S4

Radar Transponder: 1X Furono, FAR 2117 Echo Sounder 1X Furono, FE 700

Gyro Compass (IMO) 1X SIMRAD, GC 80

GMDSS A3 1X Furono, RC-1800T

Magnetic Compass 1X Daiko Magnetic Compass

Speed Log 1X Furono, DS-80

Auto Pilot 1X Simrad AP50 Auto Pilot System

Navtex Receiver 1X Furono, NX-700 B

GPS Navigation 1X Furono, GP-150 EPIRB 1X Samyung SEP-406

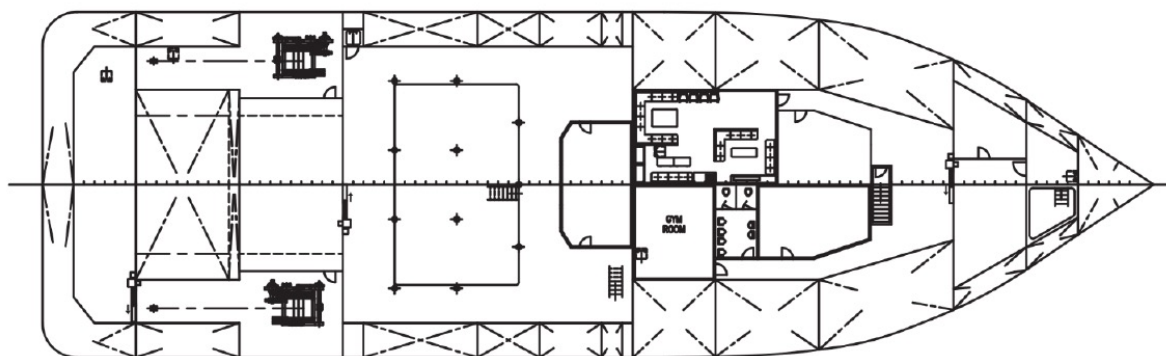
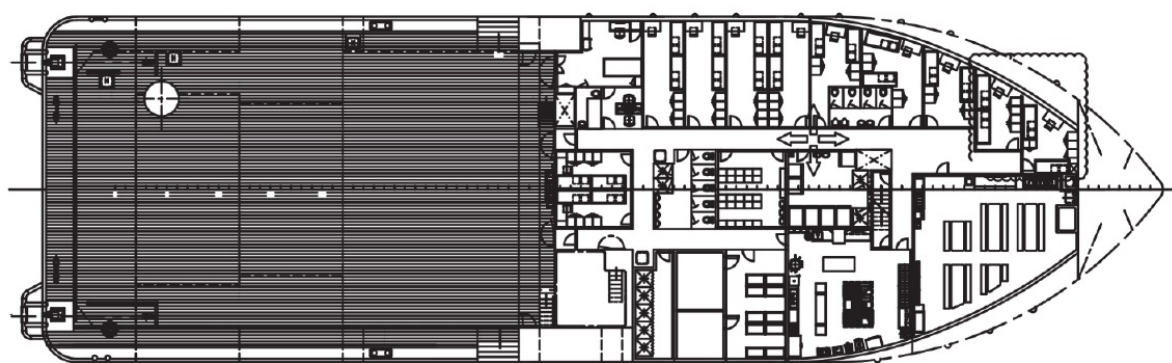
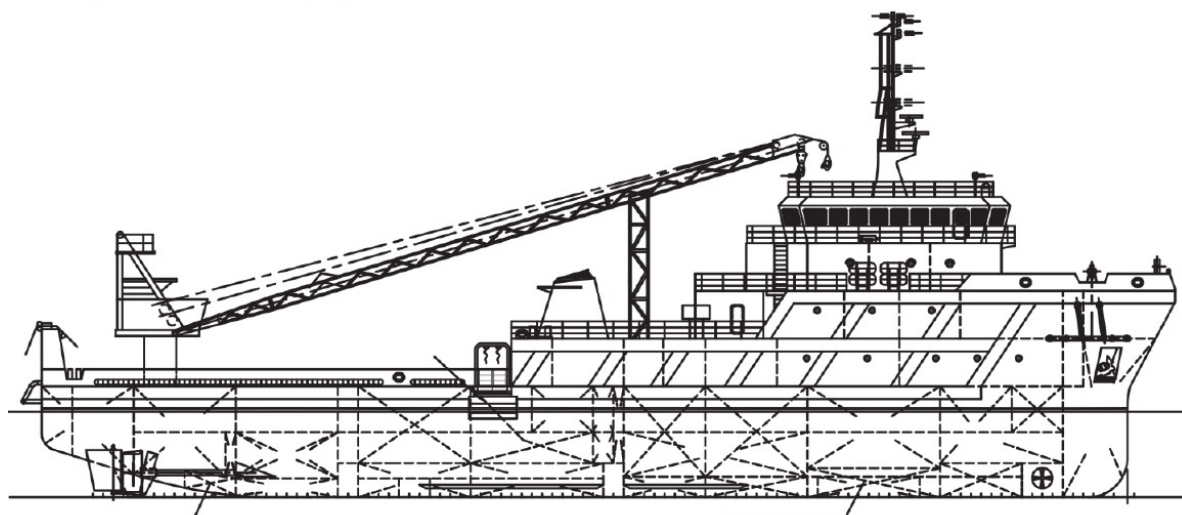
AIS 1X Furono, FA-150

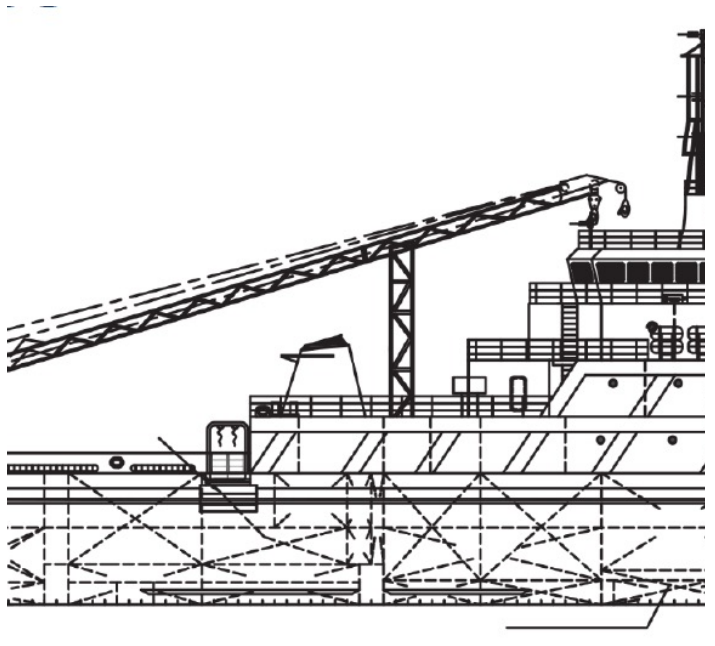
BNWAS 1X Furono, BR-500

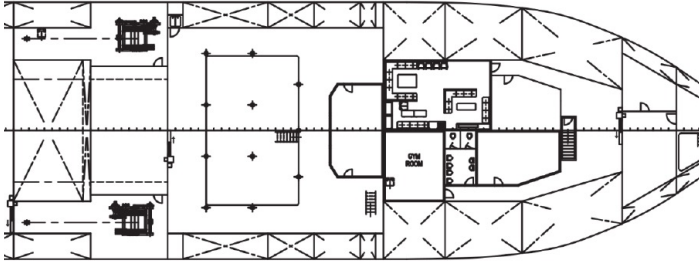
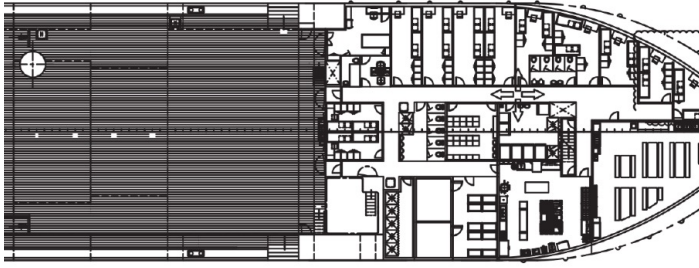
Fax 1X JMC FX-220

Fleet Broadband 1X Sailor 150 Fleet Broadband

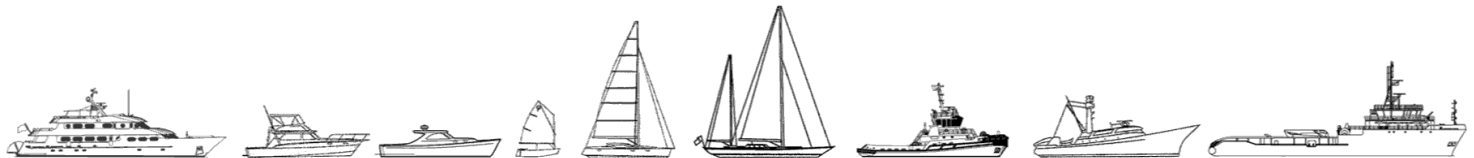
HF 1X Furono, FS 2575 Walkie Talkie 3X Samyung, STV-160







The details of all vessels are offered in good faith but we cannot guarantee or warrant the accuracy of this information nor warrant the condition of the vessel. Any buyer should instruct their agents, or their surveyors, to investigate such details as the buyer desires validated. This vessel is offered subject to sale, price change, location or withdrawal without notice.



AUSTRALIA - BULGARIA - INDIA - INDONESIA - ITALY - MALAYSIA - NEW ZEALAND - PANAMA - PHILIPPINES - SINGAPORE - SPAIN - UK - USA - VENEZUELA - VIETNAM