



SEA BOATS

MARINE BROKERS WITH A GLOBAL APPROACH

AUSTRALIA - BULGARIA - INDIA - INDONESIA - ITALY - MALAYSIA - NEW ZEALAND - PANAMA - PHILIPPINES - SINGAPORE - SPAIN - UK - USA - VENEZUELA - VIETNAM

sales@seaboats.net - www.seaboats.net

50.29m Fast Supply Vessel



Listing ID - 1399

Description 50.29m Fast Supply Vessel

Date 1997

Launched

Length 50.29m (175 ft.)

Beam 9.75m (32 ft)

Draft 3.96m (13 ft.)

Location USA

Hull: 33

Vessel Type: Fast Supply Vessel

Year Built: 1997

Year Converted/Modified: 2014: DP-2 Upgrade

Shipyard: Breaux Brothers Enterprises

DIMENSIONS

LOA: 50.29m (175 ft.)

Beam: 9.75m (32 ft)

Draft: 3.96m (13 ft.)

Draft (Maximum Operations): 9 ft. (2.74 m)

Freeboard (Maximum Draft): 6 ft. (1.83 m)

Clear Deck: 106 ft. x 28 ft. (32.31 m x 8.53 m)

Cargo Deck Area: 2,968 sq. ft. (275.60 sq. m)

Deck Cargo Capacity: 270 LT (274.3 MT)

Gross Tonnage: 98 (88.9 MT)

Net Tonnage: 67 (60.78 MT)

Deadweight Tonnage: 326 LT (331.2 MT)

CAPACITIES

Fuel Oil: 20,263 gals. (76.70 m³)

Ballast: 35,019 gals. (132.56 cu. m)

Potable Water: 1,066 gals. (4.04 m³)

PUMPS WITH DISCHARGE RATES

Fuel Oil: 190 GPM @ 140 ft.

Water: 190 GPM @ 140 ft.

MACHINERY

Main Engines: Three (3) 3516B, 6,600 BHP

Auxiliary Engine: One (1) CAT C9, 503 BHP

Bow Thrusters: One (1) 150 HP Retractable Azimuthing

Speed: 29 knots

Propellers: Three (3) 68 in. x 76 in. Fixed/Open

Generators: Two (2) CAT 3406; 75 kW each

SPECIAL FEATURES

Ship Motion: Roll Stabilization Tanks

Positioning: DP 2

Walk-In Cooler

Walk-In Freezer

ELECTRONICS

Electronics Package: Two (2) Radars, Two (2) VHF Radios, Sea SBB (Single Sideband Radio), Depth Sounder, GPS, Navtex Receiver, Necoder, Autopilot, 406 EPIRB

CLASSIFICATION

ABS: High-Speed Regulations

ABS: Loadline

ABS: A1

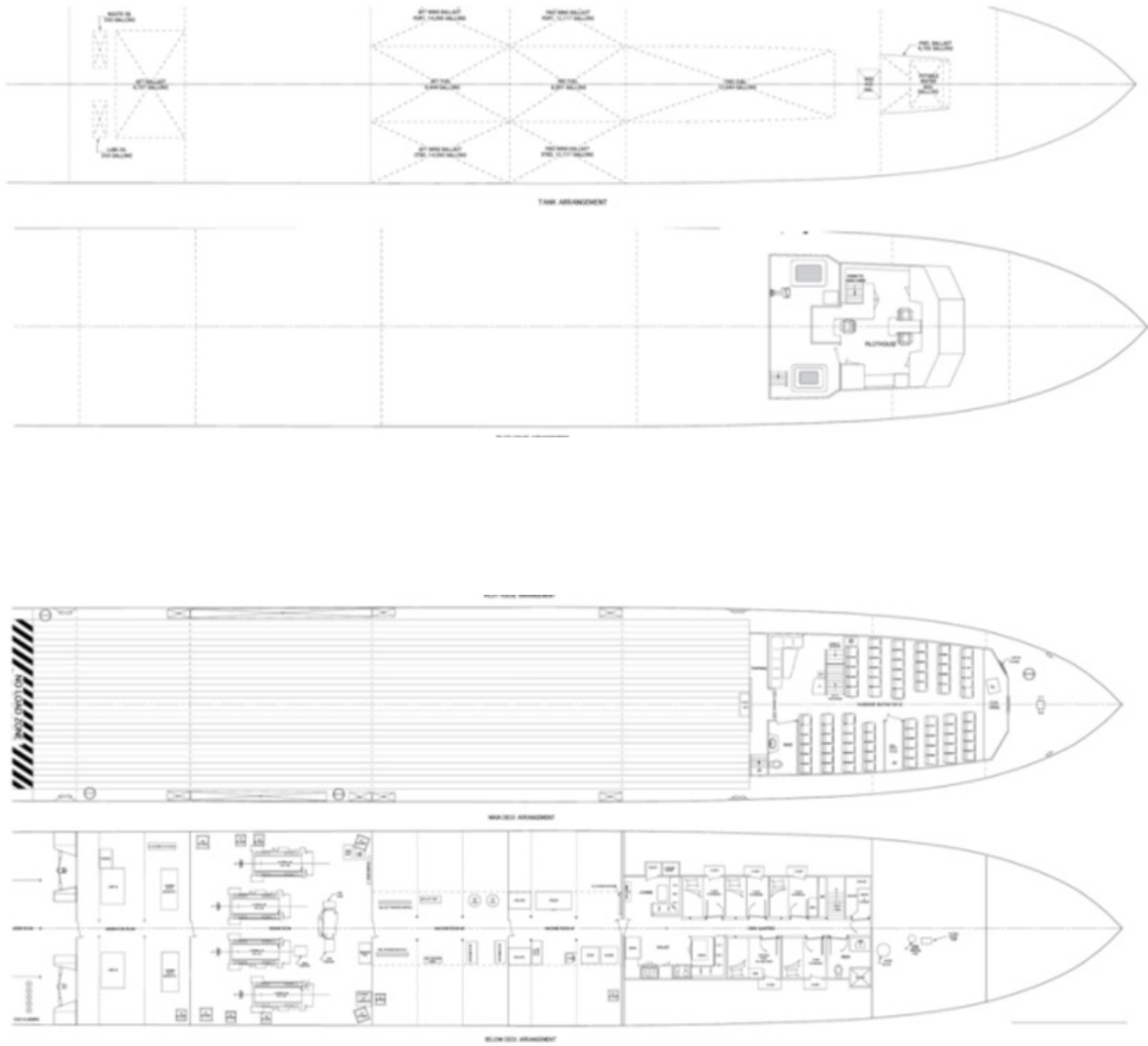
ABS: AMS

ABS: DPS-2

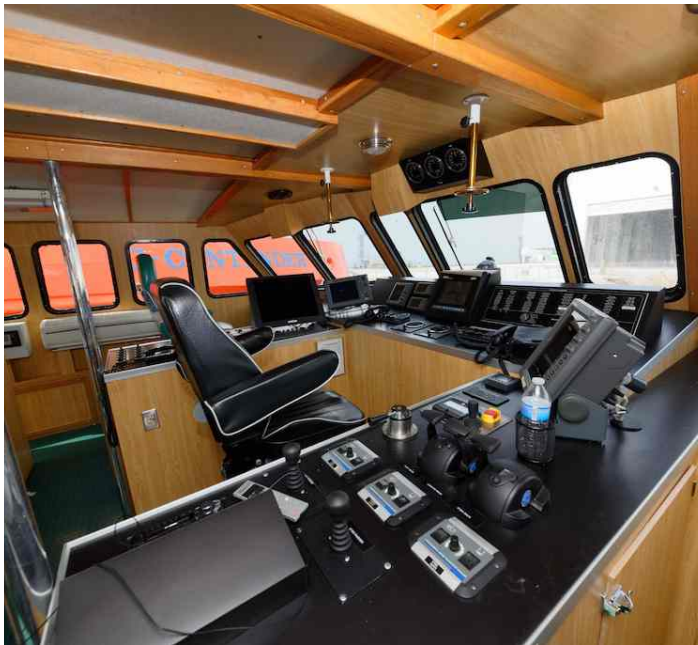
ACCOMMODATIONS

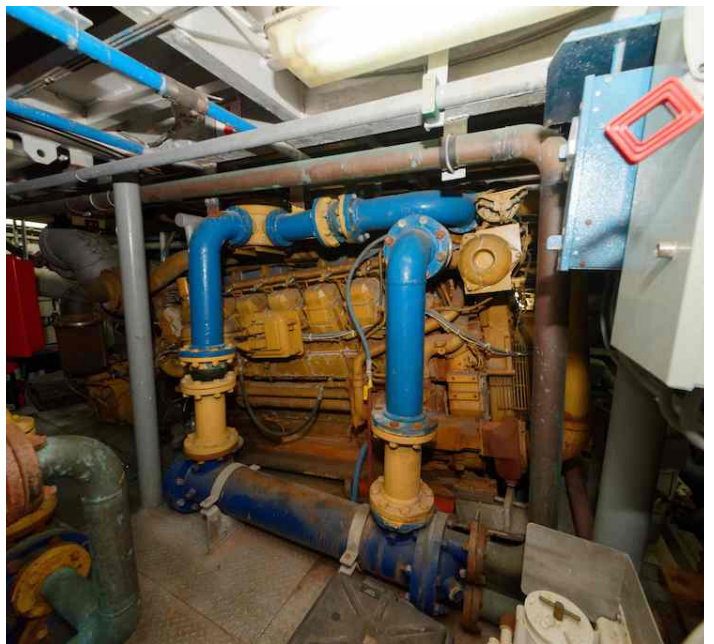
Accommodations: 10

Passengers: 66

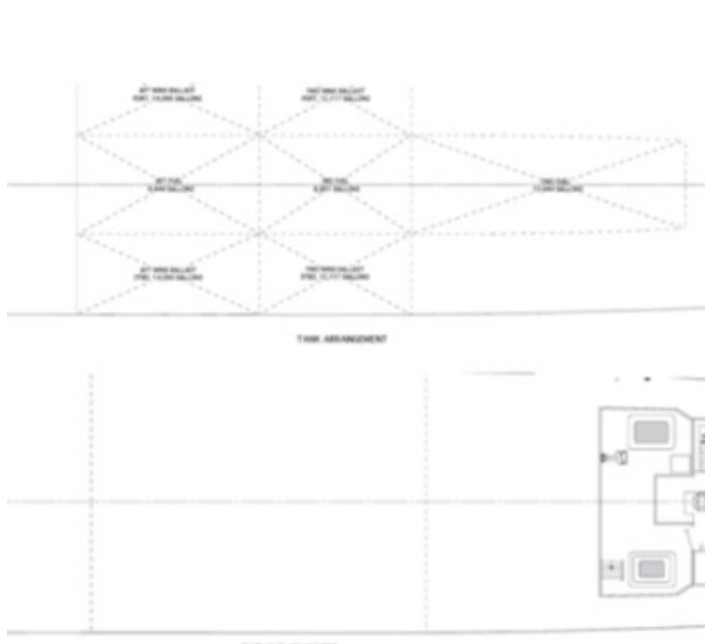
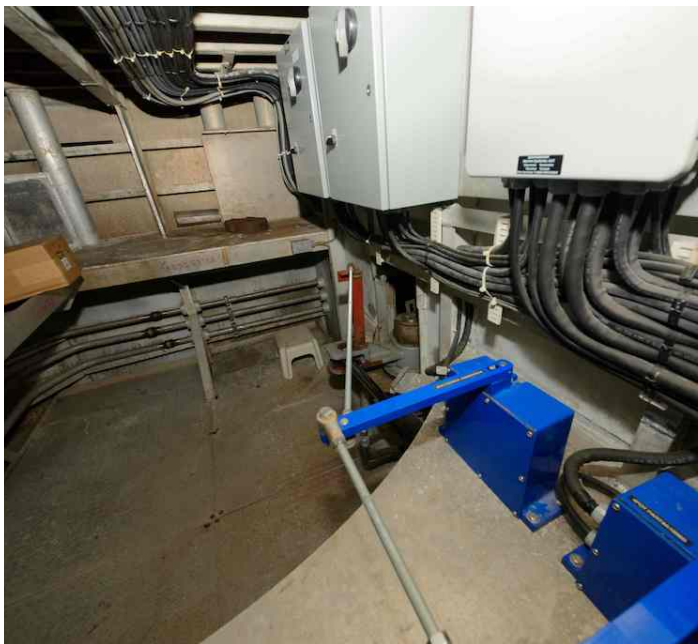
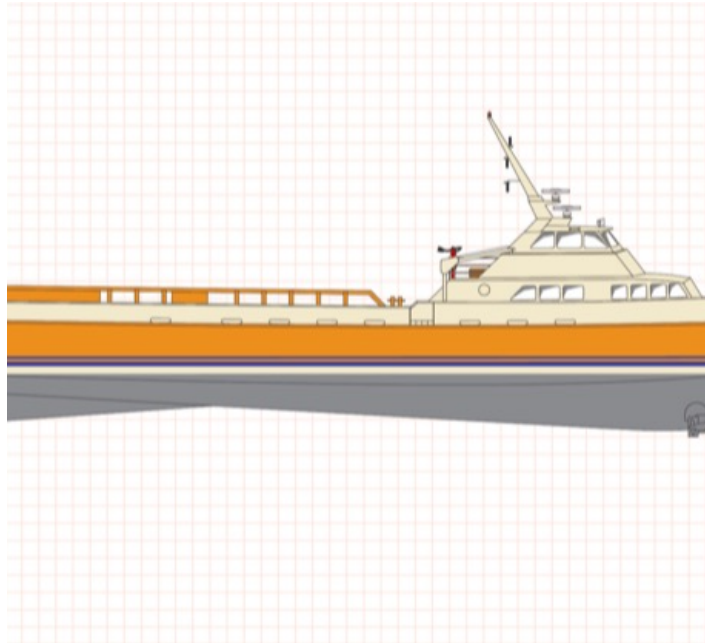






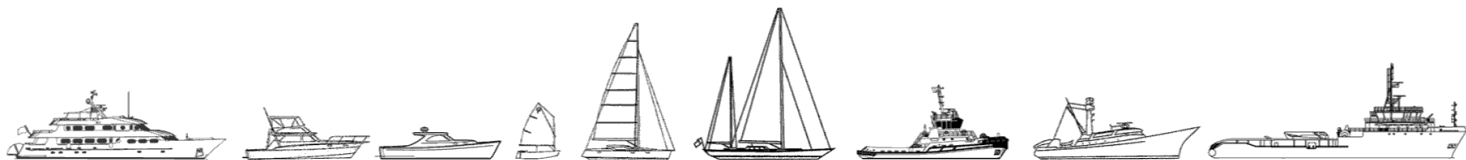








The details of all vessels are offered in good faith but we cannot guarantee or warrant the accuracy of this information nor warrant the condition of the vessel. Any buyer should instruct their agents, or their surveyors, to investigate such details as the buyer desires validated. This vessel is offered subject to sale, price change, location or withdrawal without notice.



AUSTRALIA - BULGARIA - INDIA - INDONESIA - ITALY - MALAYSIA - NEW ZEALAND - PANAMA - PHILIPPINES - SINGAPORE - SPAIN - UK - USA - VENEZUELA - VIETNAM