



# SEA BOATS

MARINE BROKERS WITH A GLOBAL APPROACH

AUSTRALIA - BULGARIA - INDIA - INDONESIA - ITALY - MALAYSIA - NEW ZEALAND - PANAMA - PHILIPPINES - SINGAPORE - SPAIN - UK - USA - VENEZUELA - VIETNAM

[sales@seaboats.net](mailto:sales@seaboats.net) - [www.seaboats.net](http://www.seaboats.net)

## SOLD - 13.3m High Quality Wooden Fishing Trawler



### **Listing ID - 1411**

<b>Description</b>	<b>13.3m Fishing Trawler</b>
<b>Date Launched</b>	2009
<b>Length</b>	13.3m (43ft 7in)
<b>Beam</b>	4.14m (13ft 6in)
<b>Draft</b>	2.05m (6ft 8in)
<b>Note</b>	38 tonnes
<b>Location</b>	South Island, New Zealand
<b>Broker</b>	Geoff Fraser <a href="mailto:geoff.fraser@seaboats.net">geoff.fraser@seaboats.net</a> +64 21 61 222 5

### Overview

FV Nessie J, designed and built by Stark Bros of NZ in 2009, at 13.3m x 4.14m – a great example of a traditional NZ Kauri built traditional inshore trawler from the Stark Bros stable. As with many other Stark Built commercial trawlers it has been designed, built, then operated, repaired and maintained by the family to the highest standards since launching. The capabilities and presentation of this 10 year old vessel will impress. Built in NZ Kauri, carvel planking with Hardwood ribs, keel and decks, this is one of those traditional fishing boats built to last, fitted with modern Stability Wings, providing a stable platform for crew comfort and fishing operations. With the fishing electronics you would expect on an inshore trawler, a Skipper and 1 crew can fish in a wide range of conditions, maximising value with a maximum of 180 bins of fresh fish, in the refrigerated fish hold. It is currently fishing, but due to additional vessels joining the Stark Family fleet, it is now being marketed for sale.

### Specification

Type of Craft: Trawler

In Survey to: NZ Coastal Fishing Vessel

Designer and Builder: Stark Bros Ltd

Constructional Material: Timber

Free Running Speed: 8 knots

Fuel Capacity: 2500 litres

Fresh Water Capacity: 250 litres

Lube Oil Capacity: 350 litres

Waste Water Capacity: 65 litres

Hydraulic Oil Capacity: 350 litres

Crew: 2

Trawl Winches: Stark Bros hydraulic split winches, 400m x 11mm wire

Cod End Winch: Brevini 1 tonne

Net Roller: Stark Bros - 1 x aft

Fish Hold: 180 Fish bins

Paint: International Paints

Main Engine: Doosan L086TIH 285hp, together with Dong-I DMTP5100 live drive 3.08 - 1 Gearbox

Propeller: 4 blade 40 x 26 Manganese Bronze

### **Navigation Equipment**

Steering: Hydraulic

Radar: Furuno 1717 7" LCD

Depth Sounder: Furuno FCV 585 8.5" LCD Colour

RADIO VHF: GME Electraphone GX600

Auto Pilot: Furuno NavPilot 611

GPS: Furuno GP-32 GPS/WAAS Navigator

Chart Plotting: SEAPLOT

Compass / Deviation Card: 1x Saura 150mm

Charts: NZ 63, 62, 64, 6321, 6324, 632

Almanac / Pilots / Tide Tables: NZ Almanac

Parallel Rule / divider / Pencil: 1set

Emergency Steering: Tiller arm

Anchors / Chain: 2 x 50kg Danforth

Chain Length / Heaving Line: 1 each

Mooring Lines: 1 set

SSB Radio

1x Cell phone

### **Key points of interest from the owners**

1. The FV Nessie J has been fishing well. The FV Nessie J was launched on 20.3.2009 so is only just 10 years of age. It is a traditional inshore fishing trawler, and being built from the best NZ Kauri 1 ¼" planking with Hardwood Keel, Stem, Ribs and Decking – with regular maintenance this vessel could conceivably last for generations.
2. It has recently been slipped (April 2019) for its 2 yearly out of water survey, at which time we took the opportunity to fully strip the underwater area of all paint and apply a complete new underwater paint system.
3. Obviously the catch value and quantity achieved by a fishing vessel is dependent on the skipper, the area it fishes and also the catch plan and ACE available, so it is difficult to make comparisons as to the quantity of fish we catch vs the quantity of fish another operator might catch with it. However as a guide, the FV Nessie J currently catches about 150 tonnes of fresh market fish per year, operation is 5 days per week, and about 46 weeks a year, and it fishes with Skipper and 1 crew. It will carry 180 standard sized plastic bins in the fish hold, which is refrigerated with cold wall panels.

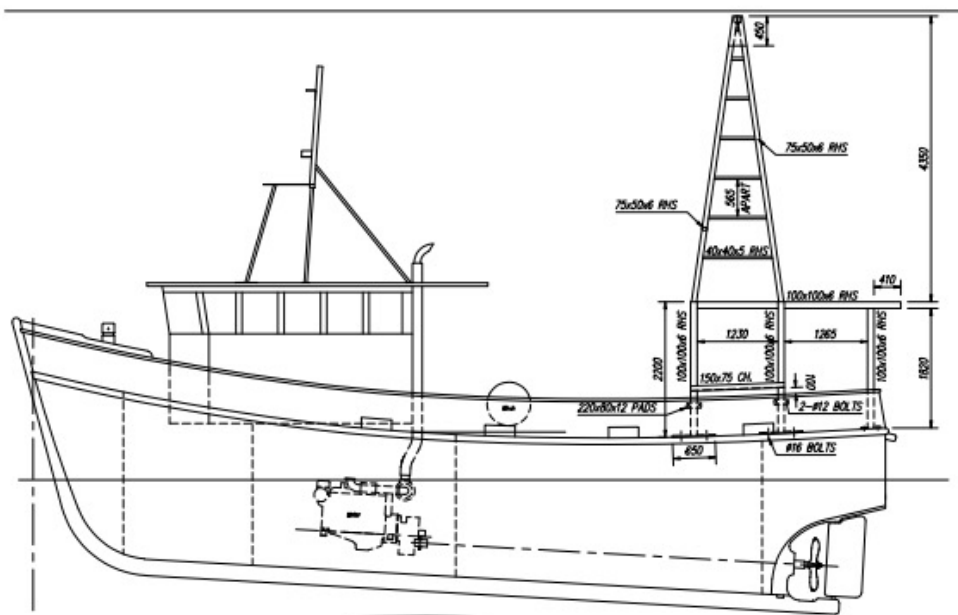
### Survey, Maintenance and Service Records

The FV Nessie J is in survey with SGS M&I and is surveyed as an NZ Coastal Fishing Vessel ( to 50nm offshore ), it is also within the MOSS system with MNZ and is fully compliant in all aspects of safe vessel operation. The owner runs a relatively comprehensive set of spreadsheets which track Weekly Servicing / Maintenance Worklist / Safety Equipment / Parts Lists. The Weekly Servicing is tracked with each item assigned an hourly interval for servicing, enabling a weekly service list to be generated based on the engine hours.

SeaBoats is very pleased to be offering this pedigree fishing vessel due to the owner's rationalising their fishing fleet. Some other vessels in their fleet are also available. More details are available on request.

### 3D Tour

FV Nessie J Tour: [https://youriguide.com/FV Nessie J iTour 14-6-2019](https://youriguide.com/FV%20Nessie%20J%20iTour%2014-6-2019)

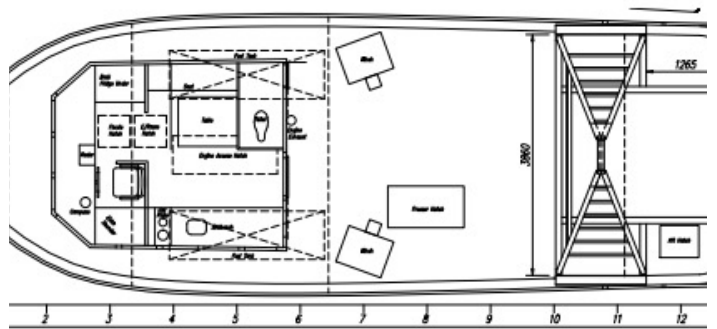
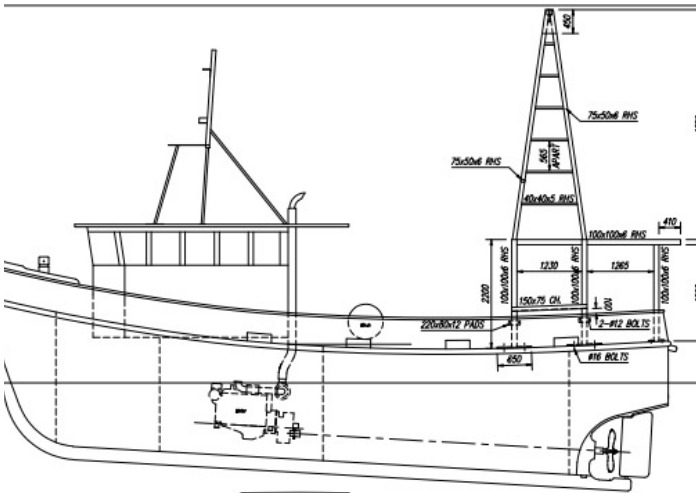
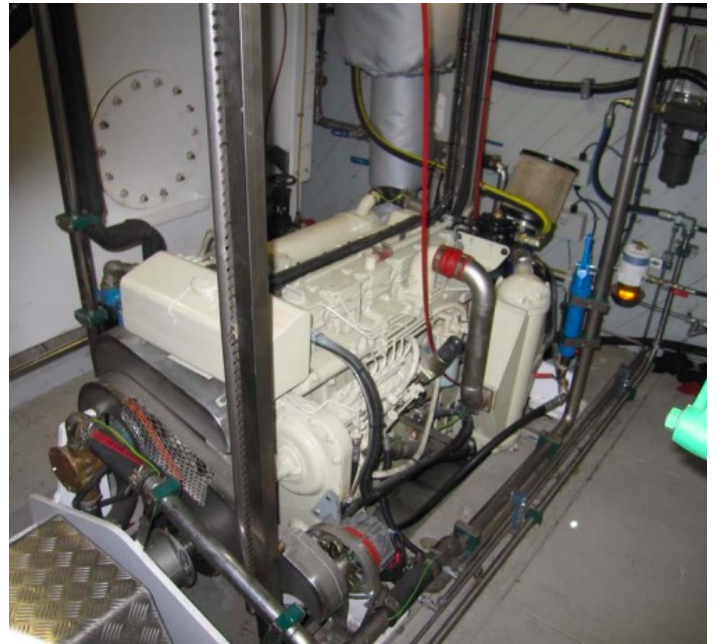








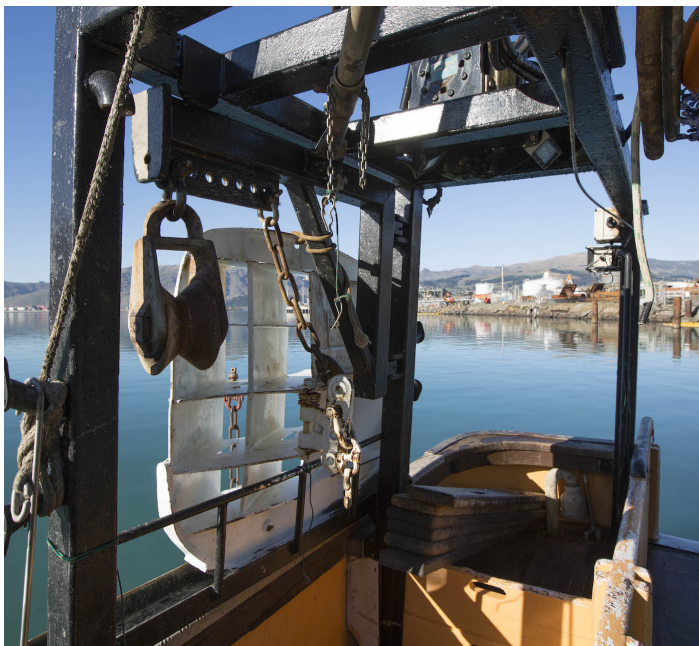
















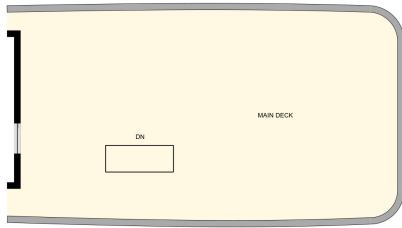






## Nessie J

Main Deck Total Interior Area 26.3 m<sup>2</sup>



1 2 m

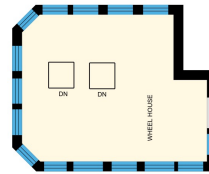
PREPARED: Jun. 2019

ons are excluded from total floor area. All room dimensions and floor areas must be considered approximate and are subject to independent verification. For method of measurement  
1 <https://younguide.com/measure/>.



## Nessie J

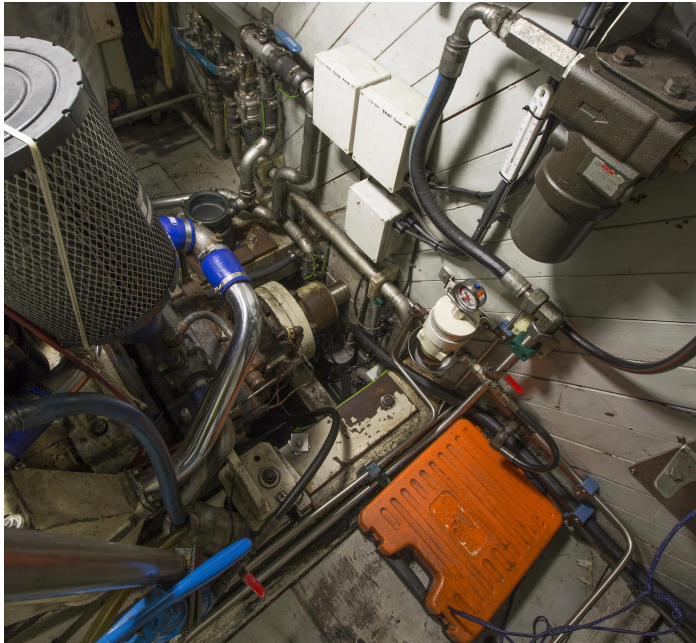
Wheelhouse Total Interior Area 8.2 m<sup>2</sup>



1 2 m

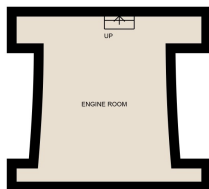
PREPARED: Jun. 2019

ons are excluded from total floor area. All room dimensions and floor areas must be considered approximate and are subject to independent verification. For method of measurement  
1 <https://younguide.com/measure/>.



## Nessie J

Engine Room Total Interior Area 7.7 m<sup>2</sup>



1 2 m

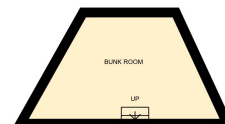
PREPARED: Jun. 2019

ons are excluded from total floor area. All room dimensions and floor areas must be considered approximate and are subject to independent verification. For method of measurement  
1 <https://younguide.com/measure/>.



## Nessie J

Bunk room Total Interior Area 4.7 m<sup>2</sup>

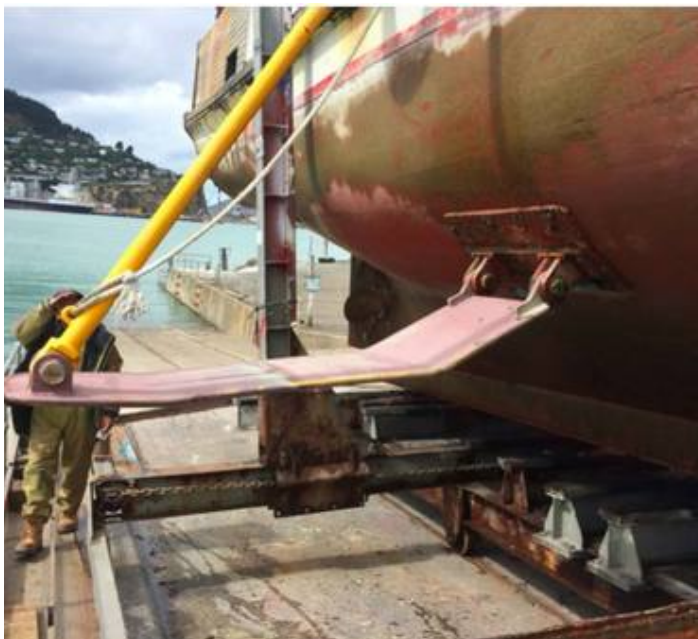


1 2 m

PREPARED: Jun. 2019

ons are excluded from total floor area. All room dimensions and floor areas must be considered approximate and are subject to independent verification. For method of measurement  
1 <https://younguide.com/measure/>.











The details of all vessels are offered in good faith but we cannot guarantee or warrant the accuracy of this information nor warrant the condition of the vessel. Any buyer should instruct their agents, or their surveyors, to investigate such details as the buyer desires validated. This vessel is offered subject to sale, price change, location or withdrawal without notice.

