



SEABOATS

MARINE BROKERS WITH A GLOBAL APPROACH

AUSTRALIA - BULGARIA - INDIA - INDONESIA - ITALY - MALAYSIA - NEW ZEALAND - PANAMA - PHILIPPINES - SINGAPORE - SPAIN - UK - USA - VENEZUELA - VIETNAM

sales@seaboats.net - www.seaboats.net

SOLD - 30.5m ASD Tug



Listing ID - 1422

Description 30.5m ASD Tug

Date 1983

Launched

Length 30.5m (100ft)

Beam 10.5m (34ft 5in)

Draft 2.4m (7ft 10in)

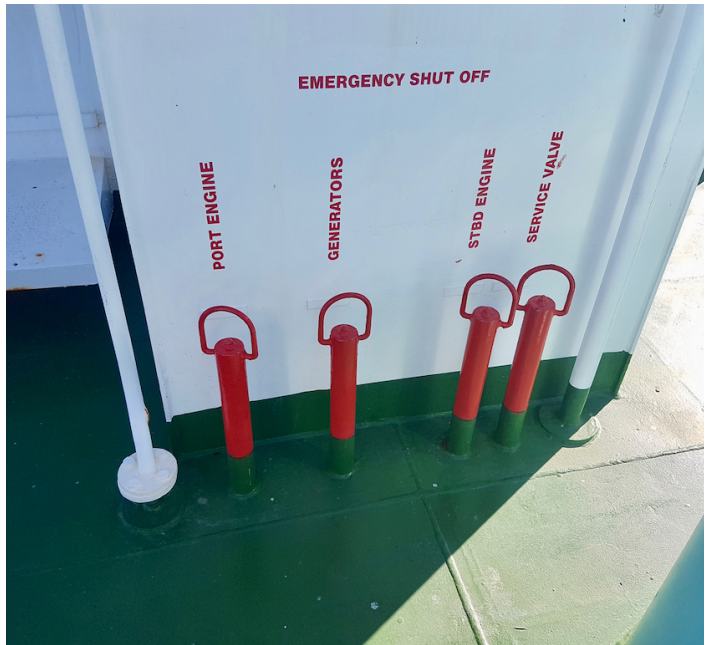
Location New Zealand

Broker John Kearns
john.kearns@seaboatsbrokers.com
+64 21 400 805

Price SOLD

30.5m ASD Harbour Tug, built 1983 in Japan. Powered by twin Niigata 6L 25CX Diesel engines producing 3000 BHP and 36 tonne bollard pull with twin aft mounted Niigata ZP2A "Z-Peller" Azimuth propulsion units with aft direction skeg keel. Two Yanmar 5KDL auxiliary generators. Fuel capacity 50,000 litres. Accommodation for 7 crew in three single and two double cabins.

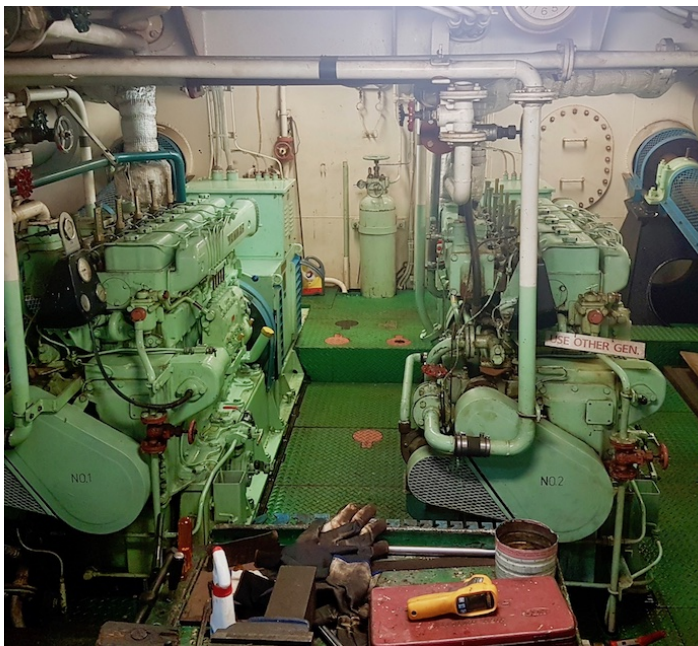


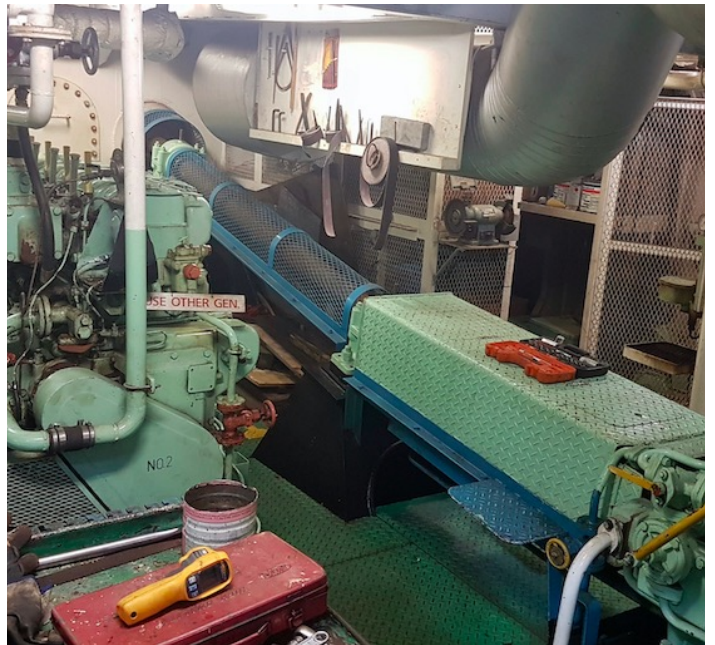




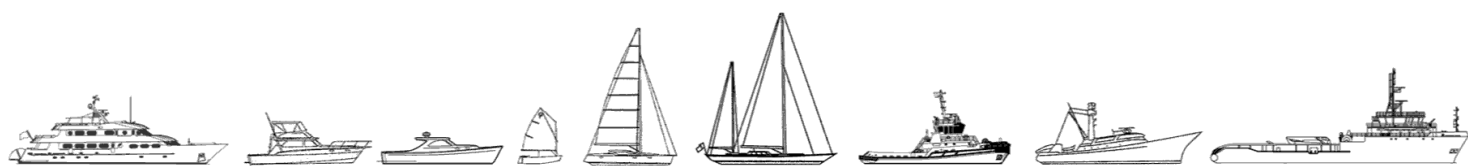








The details of all vessels are offered in good faith but we cannot guarantee or warrant the accuracy of this information nor warrant the condition of the vessel. Any buyer should instruct their agents, or their surveyors, to investigate such details as the buyer desires validated. This vessel is offered subject to sale, price change, location or withdrawal without notice.



AUSTRALIA - BULGARIA - INDIA - INDONESIA - ITALY - MALAYSIA - NEW ZEALAND - PANAMA - PHILIPPINES - SINGAPORE - SPAIN - UK - USA - VENEZUELA - VIETNAM