



SEA BOATS

MARINE BROKERS WITH A GLOBAL APPROACH

AUSTRALIA - BULGARIA - INDIA - INDONESIA - ITALY - MALAYSIA - NEW ZEALAND - PANAMA - PHILIPPINES - SINGAPORE - SPAIN - UK - USA - VENEZUELA - VIETNAM

sales@seaboats.net - www.seaboats.net

SOLD - Stevens 47. A Sparkman & Stephens design Cruising Yacht.



Listing ID - 1441

Description	Stevens 47
Date Launched	1981
Length	14.3m (46ft 10in)
Beam	4.34m (14ft 2in)
Draft	1.83m (6ft)
Location	Langkawi, Malaysia
Broker	Hanni Ajik
Price	SOLD

Overview

This S&S design Stevens 47 is perfect for blue water crossing single handed for experienced sailor or cruising family of 4 or 5 person.

In general the yacht can accommodate between 4 and 8 persons comfortably overnight. Spacious cockpit that seats 8 to 10 people easily where you can entertain friends and family over some BBQ evening and cold beers! High and sturdy safety railing on deck with lots of space to move easily or just to lay down enjoying the sun and sea breeze on your skin. Age factor that comes with wear and tear issues combines with weather and environment condition brings some TLC requirement on some parts of the interior finishing . But overall this yacht is ready to go back in the water!

Boat Type: Sailing Yacht

LOA: 14.3 m / 47ft

Beam: 4.34 m

Draft: 1.83 m

Displ: 32,000 lbs / 14,515 kg

Designer: Sparkman & Stevens

Keel type:Elongated Fin with Skeg

Rig: Cutter

Cockpit: Centre

Boat Colour: White

Builder: Qeen Long (Taiwan)

Launched: 1981

Hull material: GRP

Deck material: Balsa Cored

Engine: YANMAR 4JH3 - DTE

Speed: 7 Knots (Cruising)

Hours: 1167 hrs

Drive: Shaft

Accommodation

3 Cabins layout , back cabin sleeps in 2 separate berth, forward port cabin sleeps 2 in a double bunk, Forepeak cabin sleeps 2 in 1 spacious berth .

There is also 2 small bunks on the starboard side but been used as storage space.

This yacht can sleeps 8 persons comfortably

Galley

Force 10 (3 burner gas stove on gymbal with oven) , microwave, built in fridge, stainless steel sink with salt water and fresh water tap.

Ample space storage for galley cutleries

Refrigeration

Built-in fridge in galley (starboard)

Engine Descriptions

Yanmar 4 cylinders with Turbo (4JH3-DTE) 36 HP

Mechanical Details

On deck the yacht has 8 Barient winches ; 1 x Barient 27 located on stern in the middle just behind the helm,

Tankage

Water : 250 Gallons /946 Liters

Diesel : 100 Gallons/ 346 Liters

Electrical System

2 x house batteries

2 x start batteries

2 x option of shore power inlet (110V and ,220V)

Electrical Equipment

LCD TV (Sharp), LED lighting (interior), water pumps, bilge pumps, Navigation equipments, Audio Player (JVC), Sound System (Bose), Microwave, Fridge

Navigation Equipment

Ratheon Pathfinder SL70 Radar, Raymarine C80, Raymarine Depth Sounder,

Radios

VHF (Standard Horizon – GX2150), i-Com (IC-M800)

Entertainment

SHARP 25" LCD TV in Saloon, JVC audio Player with BOSE sound system

Construction details

Solid Fiber Glass Hull with Balsa-Cored Deck. Interior finishing is solid teak, teak veneer and Solid teak and holly flooring. High headroom over 6 feet. Port and starboard walkway circling the galley "kitchen counter" right below the cockpit with double stainless steel sinks (also where the Engine is underneath). Remaining of the galley station is on port side and chart table/navigation station on starboard all facing forward. Cutter rig with Aluminum keel stepped mast with Fin keel with skeg.

Deck Equipment

2 x Harken furler (Genoa and staysail), Maxwell 1500 electric windlass (2017), 45 Lbs COR anchor with ½" anchor chain on SS framed bow roller, pulpit , Aluminum spinnaker pole, Hall Spars Vang, 5 PVC air vents, 6 opening hatches, 14 opening portlights, 5 air vents, 9 x Barient winches (various sizes : 25,27,28,36), 2 x large line blocks (14mm – 20mm) mounted on stern (port & starboard), Shore power inlet for 110V and 220V , Spray dodger and hard roof top bimini (SS316 frame structure with 15mm PVC Foam Board hard roof sheet).

Rig and Rigging

Cutter rig , 2 spreaders , Genoa Harken Furling (12mm rope) , Staysail Harken Furling (10mm rope) , 12mm , 1x19 SS316 wire with Stalok fittings (Recently replaced - OCT 2018)

Sails

All sails in good condition . Well kept and stored out of the sun

Steering

Helm on center cockpit

General Equipment

Swim ladder on stern, boarding gate 1 each on port and starboard, Navigation lights , high safety railing/lifelines (wire and SS stanchions), boom cover/mainsail bag

Fishing Equipment

Fishing rods of different sizes

Safety Equipment

EPIRB with grab bag, Liferaft , fire extinguishers

Maintenance

New rigging replacement – OCT 2018

New built hard top bimini – NOV 2018

New hull paint – SEPT 2018

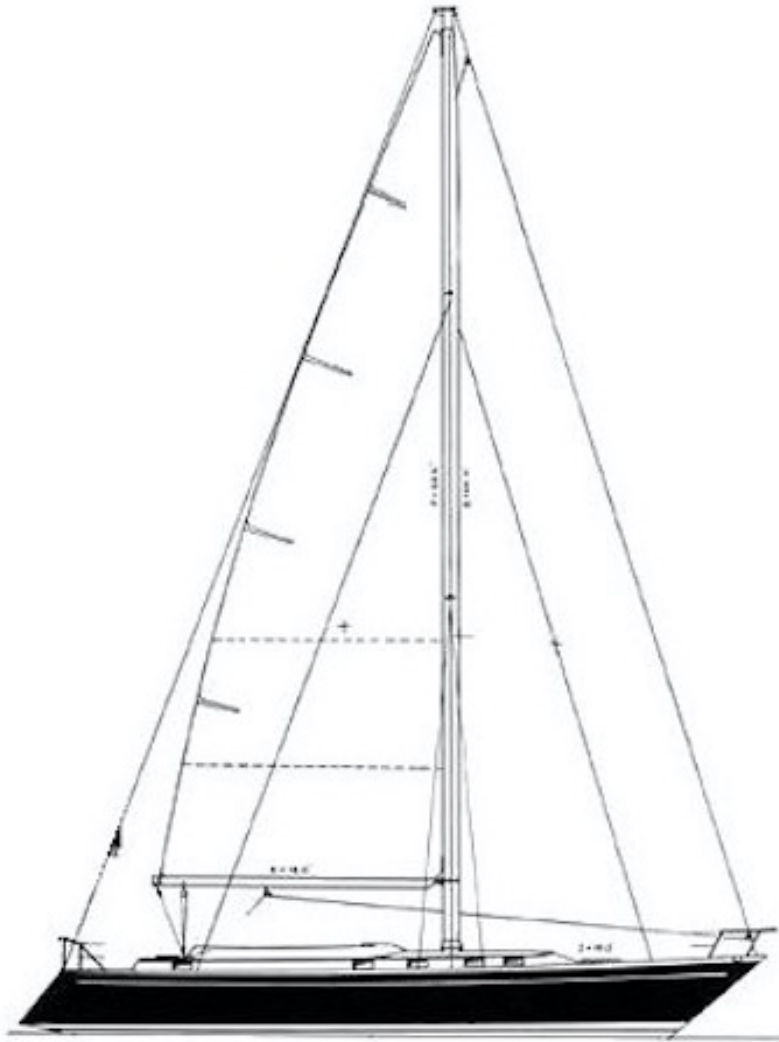
New spray dodger – OCT 2018

General service on engine – on hardstand 2018

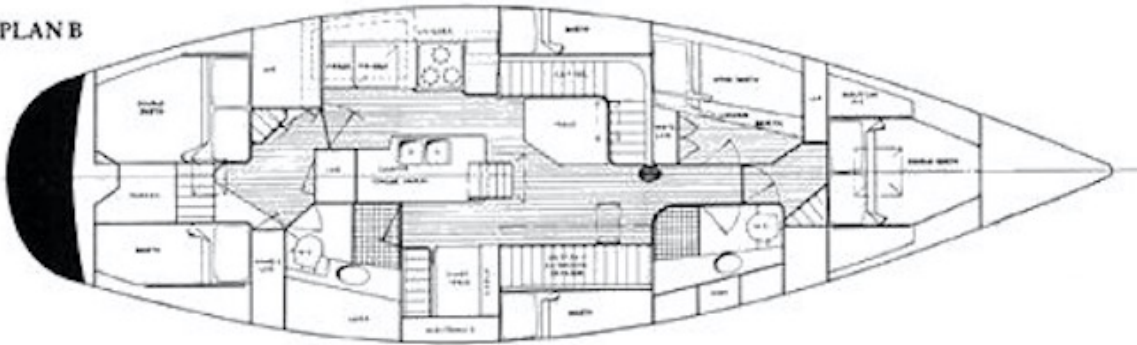
Vessel History

Late owner sailed her across from the USA. She has been cruising in South East Asia between 2012 and 2017.

Hauled out in 2017 . She has been on hard stand for maintenance work (paint, rigging , stainless steel fabrication jobs, hard top bimini, sail repairs, new spray dodger, engine, etc.) up to December 2018. She has been stored on idle since her owner passed away



PLAN B





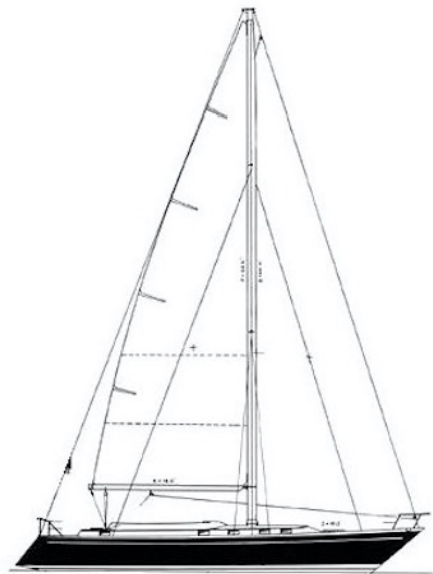
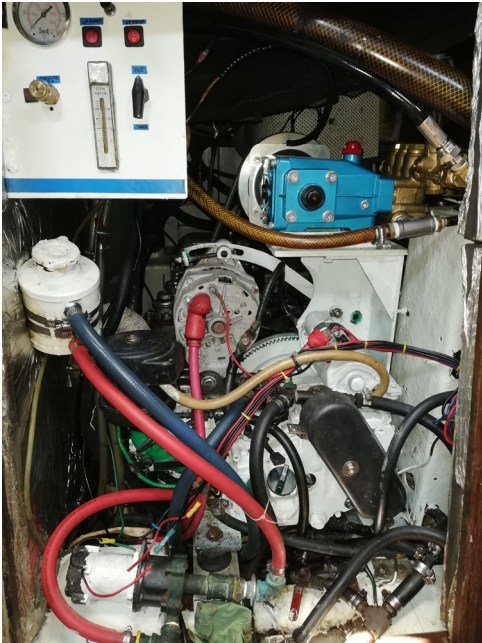
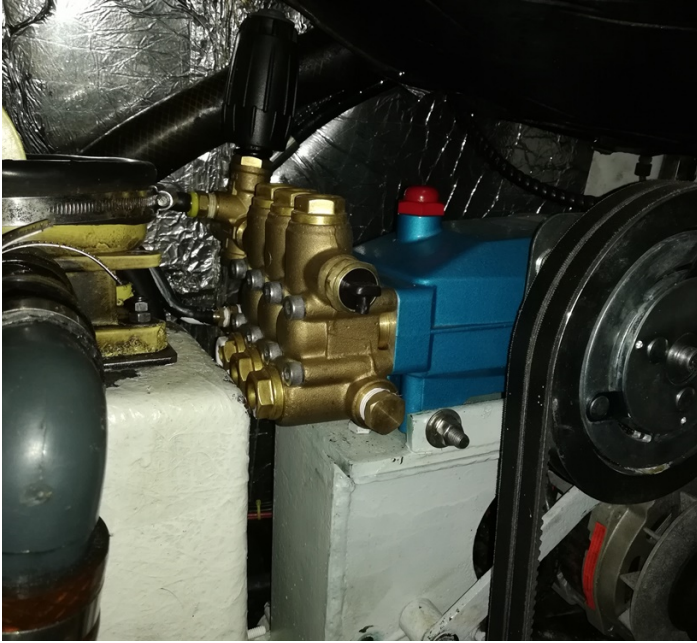














The details of all vessels are offered in good faith but we cannot guarantee or warrant the accuracy of this information nor warrant the condition of the vessel. Any buyer should instruct their agents, or their surveyors, to investigate such details as the buyer desires validated. This vessel is offered subject to sale, price change, location or withdrawal without notice.



AUSTRALIA - BULGARIA - INDIA - INDONESIA - ITALY - MALAYSIA - NEW ZEALAND - PANAMA - PHILIPPINES - SINGAPORE - SPAIN - UK - USA - VENEZUELA - VIETNAM