



# SEA BOATS

MARINE BROKERS WITH A GLOBAL APPROACH

AUSTRALIA - BULGARIA - INDIA - INDONESIA - ITALY - MALAYSIA - NEW ZEALAND - PANAMA - PHILIPPINES - SINGAPORE - SPAIN - UK - USA - VENEZUELA - VIETNAM

[sales@seaboats.net](mailto:sales@seaboats.net) - [www.seaboats.net](http://www.seaboats.net)

## SOLD - 13.25m Multi-purpose Workboat.



### Listing ID - 1513

<b>Description</b>	<b>13.25m Multi-purpose Workboat</b>
<b>Length</b>	13.25m (43ft 5in)
<b>Beam</b>	6.25m (20ft 6in)
<b>Location</b>	United Kingdom
<b>Broker</b>	Richard Pierrepont <a href="mailto:richard.pierrepont@seaboatsbrokers.com">richard.pierrepont@seaboatsbrokers.com</a> +44 7798 607 323
<b>Price</b>	SOLD

Brief Description: Aluminium catamaran workboat

Official No: 3444

MMSI/Call Sign: 232004602

Port of Registry: St Peter Port

Builder: Metalu Industries Intl.

Hull Construction Material: Alu

Date of Build: 1987

Length (m): 13.25

Breadth (m): 6.25

Intended commercial use: General WB

No. of Persons to be carried: 3 + 12

Area Category: 3

Base Port (s): St Peter Port

### MACHINERY – MAIN ENGINE

Marine diesel engine: 2 x Volvo TAMD 63L

Power: 228 kW each

2 independent means of starting: Each engine has dedicated sets of batteries, with cross-over switch.

Fuel tank material: Aluminium

Fuel tank location: Aft of engine space

Fuel pipes/connections to required standards: Yes, BS 7840 + metal pipe

Fuel filling/venting system to required standards: Yes

Engine space clear of combustible materials: Yes

Fuel shut-off: Yes, located in deckhouse floor.

## **OTHER MACHINERY SYSTEMS**

Mastervolt Whisper 6 Generator in Port mid/aft compartment.

Active / Passive fire protection as per main engine: Separate fire extinguisher in generator compartment

## **ELECTRICAL SYSTEM**

System to acceptable marine standard

Batteries secured & adequately ventilated: Yes – main batteries boxed & stowed in engine space and ventilated as that space.

Emergency lighting provided (escape & embarkation): Yes – torch in Wheelhouse

Isolation & electrical protection to an acceptable standard: Yes.

Systems description: Switchboard and control panel in helm area – all fuses accessible in that area.

## **STEERING GEAR, RUDDER & PROPELLER SYSTEMS**

Adequate visibility from steering position for all activities: Yes – 2 helm stations + camera and mirrors. Some restriction from helm when moving astern, and vice-versa, but this can be mitigated by good communication

Steering to marine standard: yes

Emergency steering provided for wheel systems: An emergency tiller is fitted and the vessel may be steered by use of the independent propellers

## **BILGE PUMPS & ALARMS**

Power / Hand pumps no, type, capacity & location: 140 litres/minute total required

Auto bilge pumps excluded from machinery spaces: Yes. Manual system with alarms.

Audible bilge alarms fitted: Yes

All compartments capable of being drained: Yes

## **LIFE SAVING APPLIANCES**

Life raft on board & in date: 2 x Zodiac Racing MP 8 man liferafts fitted.

These liferafts are ISAF ORC compliant fitted with Appx A part 2 equipment.

Correct pack fitted in raft or supplementary grab bag (Cats. 0/1 m Canister must have internal pack): Yes

Canister / Valise: Canister

Life raft stowage arrangement: Stowed on aft of wheelhouse aft roof, fitted with HRU's

Lifbuoy type (horseshoe or circular): Circular with lights and line

Lifbuoys fitted with becket lines, refl. tape, name, registered port (or base port if not reg.): Yes

2 lifbuoys on board (<16 persons): Yes

Lifjackets on board: Yes 12 on board + crews own. Ocean Safety commodore Auto.

Lifjackets fitted with reflective tape, whistles & lights (ex Cat.4,5,6): Yes

Red hand flares: 6

Red parachute flares: 4

Orange smoke signals: 2

Lifesaving signals table(s) displayed: Yes



General alarm (Installed Power >750kW): Yes

Engine space clean & able to retain oil spillage for discharge ashore: Yes, manual activation for bilge pumps

### **RADIO EQUIPMENT**

DSC VHF radio, interfaced with GPS

3 VHF's fitted, 1 has DSC

ICOM ICM 59 ICOM M505 Sailor RT144C

Portable waterproof vhf (1 per life raft): ICOM M31 – has a corroded battery terminal and may require replacement soon.

Back-up battery supply or charging facility on board: Dual battery supply with change-over switch

Battery located to protect from flooding: Yes

Emergency action card displayed at radio position: Yes

### **NAVIGATION LIGHTS, SHAPES & SOUND SIGNALS**

Lights for operation between sunset & sunrise

Steaming light: Yes

Port & stbd lights: Yes

All round white light: Yes

Shapes & sound signals as per Colregs: Yes

Describe special lights/shapes: Towing lights fitted.

### **NAVIGATIONAL EQUIPMENT**

fluxgate compass with 2 alternative independent power supplies: Yes

Adequate lighting for compass (where applicable): Yes

Means to take bearings over 360: Yes, hand held compass

Means to indicate vessel position e.g. GPS (Cat. 0/1/2) : Yes

Echo sounder (or alternative means for taking soundings): Yes

### **MISCELLANEOUS EQUIPMENT:**

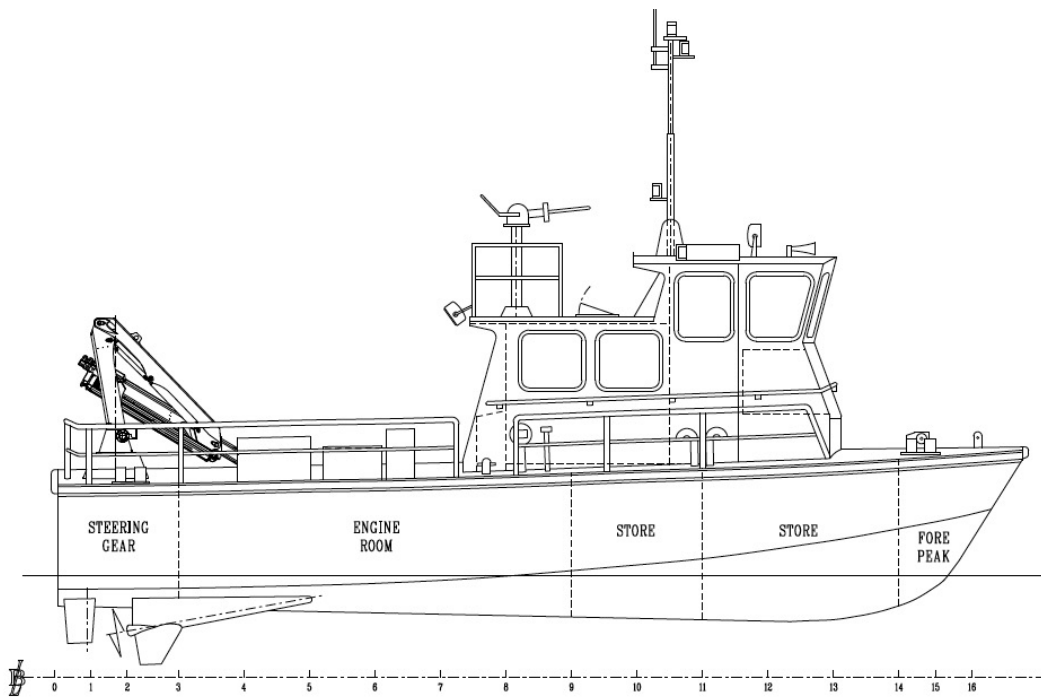
Nautical publications appropriate to vessel size, area, duty: Yes

Signalling lamp/waterproof torch: Yes

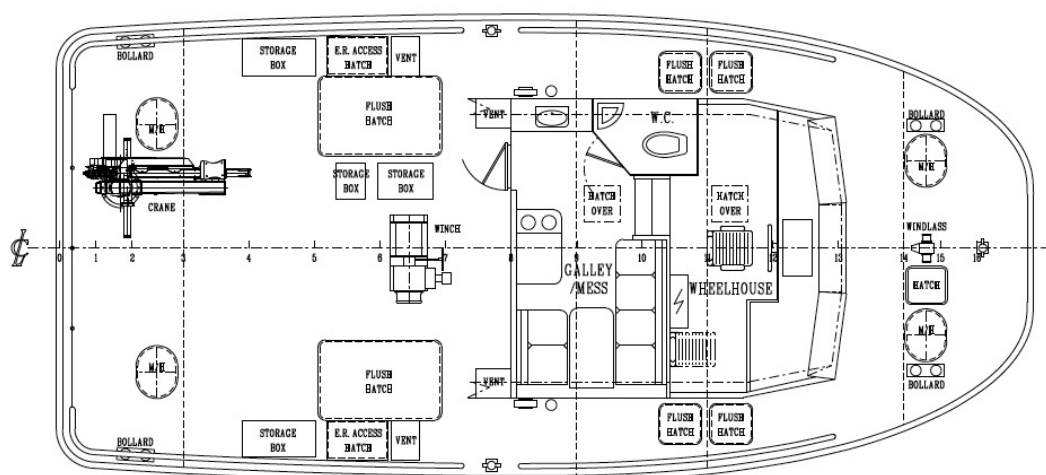
Efficient radar reflector: Yes

Barometer (Cat.0/1/2): Yes

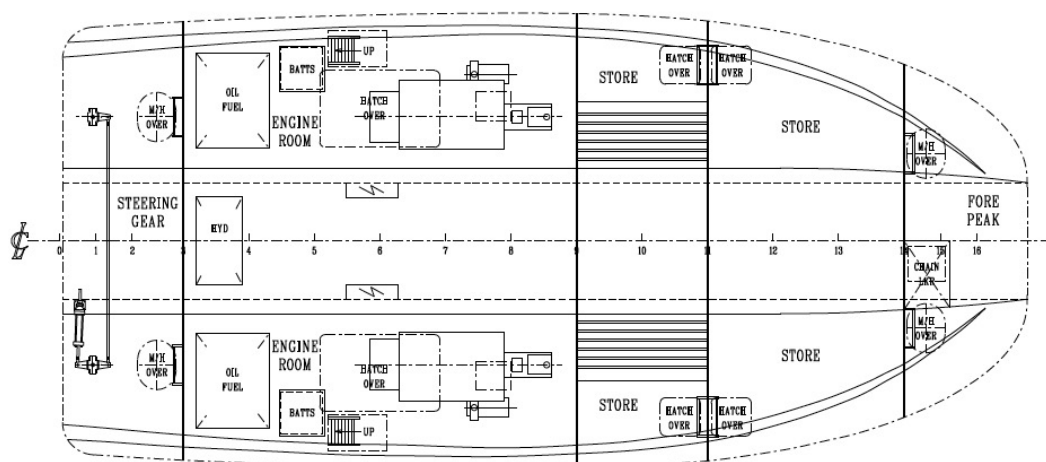
MOB Searchlight (Cat.0/1/2/3): Yes



PROFILE



MAIN DECK



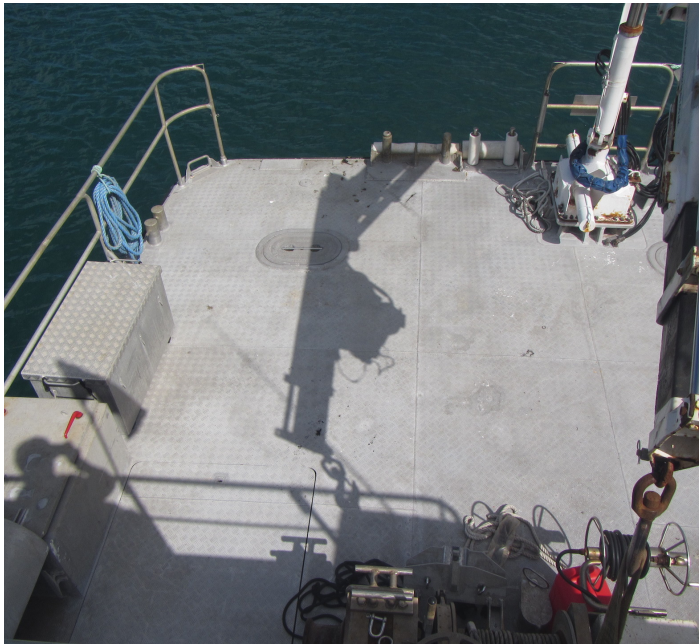












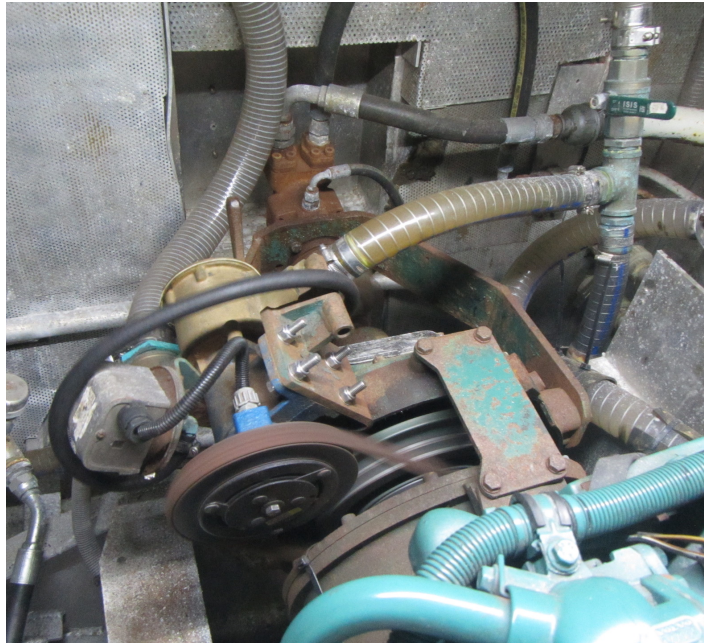
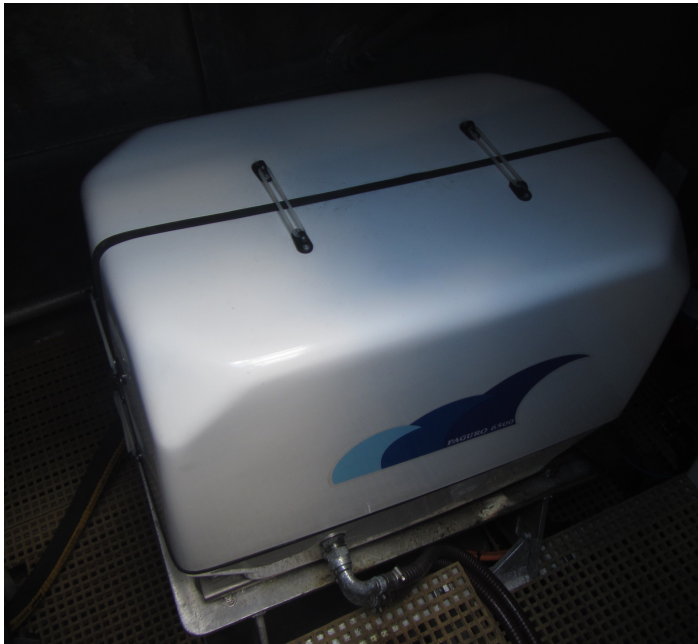




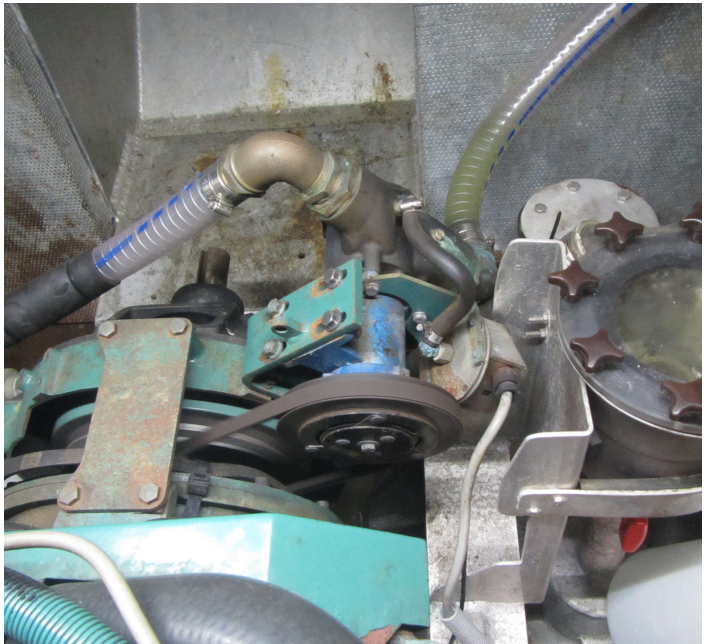




















The details of all vessels are offered in good faith but we cannot guarantee or warrant the accuracy of this information nor warrant the condition of the vessel. Any buyer should instruct their agents, or their surveyors, to investigate such details as the buyer desires validated. This vessel is offered subject to sale, price change, location or withdrawal without notice.

