



SEA BOATS

MARINE BROKERS WITH A GLOBAL APPROACH

AUSTRALIA - BULGARIA - INDIA - INDONESIA - ITALY - MALAYSIA - NEW ZEALAND - PANAMA - PHILIPPINES - SINGAPORE - SPAIN - UK - USA - VENEZUELA - VIETNAM

sales@seaboats.net - www.seaboats.net

SOLD - Beneteau First 456



Listing ID - 1565

Description Beneteau First 456

Date 1987

Launched

Length 13.92m (46ft)

Beam 4.29m (14.08ft)

Draft 2.44m (8ft)

Note 12,020 kgs

Location Langkawi, Malaysia

Broker Hanni Ajik

Overview

She is a great cruising yacht with 3 en-suite cabins and can comfortably sleep 8 and the saloon also seats 8 comfortably. The 2 aft cabins are mirror image of each other, both with plenty of storage space to keep all your personal belongings. The galley is very well equipped and the navigation station is opposite. The saloon table is collapsible to give extra walking space inside the boat. The forward cabin 2 twin double bunks also with plenty of storage space. The Perkins engine was last serviced in June 2019. She has all B&G new navigation system installed in June 2019, Autopilot system also installed in June 2019. In the cockpit she has huge stainless steel helm. She can easily seat between 8 and 12 people on a day cruise on the cockpit and around the deck. Equipped with removable soft top bimini for perfect shade on one of those hot weather. This lady has mast furl-in main sail with 2 spreaders on mast with rod rigging rig setup. For anchoring system, the owner got a her a new (2019) 25kg Rocna anchor

paired with a B&G anchor chain windlass (new 2019) .

This Beneteau First 46.3 is great value with all new navigation system installed.

Details

Boat Type: Sailing Yacht

LOA: 13.92m (46ft)

Beam: 4.29m (14.08ft)

Draft: 2.44m (8ft)

Displacement: 12,020 kgs

Designer: German Frers

Keel type: Fin with Spade Rudder

Rig: Masthead Sloop

Boat Colour: White

Builder: Beneteau

Launched: 1987

Hull Material: GRP

Deck Material: GRP

Engine: Perkins 4108

Speed: 8 knots

Hours: TBA

Drive: Shaft

Accommodation

3 CABINS each with ensuite head

2 double bed cabin on aft , 1 twin double bunk on forepeak cabin, solid wood finishing all around the interior.

Ample stowage space in forepeak where sails and spare ropes is stored.

First bulkhead from the bow separates the forepeak stowage space from the forward cabin head/shower.

Second bulkhead from bow separate first head room from forward cabin, this cabin sleeps 4 persons (2 double bunk on port and 2 double bunk on starboard).

Maximum headroom height is in saloon area at 194cm. The saloon can seat 9 people comfortably.

Looking aft on your starboard side would be the galley and navigation station would be on your port side.

The remaining 2 cabins on aft is mirror image to one another. (looking forward) The ensuite head for starboard aft cabin is located in between the navigation station/chart table and the starboard aft cabin.

The ensuite head for port aft cabin is located in between the galley and the port aft cabin.

Galley

Stove on gymbal with 2 burner + oven, galley counter top , twin sinks with fresh water and salt water tap. 2 sections of built-in fridge, lots of storage space for cutleries.

Refrigeration

2 sections of built-in refrigeration

Engine Description

Quick Windlass (new – 2018), hydraulic Voom Bang (NAVTEC), 1 x unit spare depth sounder (new), 1 x unit wind indicator (B&G – new still in packaging box)

Tankage

Water tank: 397 liters

Fuel tank (diesel): 208 Liters

Electrical System

12 volts
3 house batteries x 200 AMP each
1x start battery 100 AMP

Electrical Equipment

Wifi Booster (The Wiri), electric kettle, marine wall fan x 4, Quick windlass, interior 12v lights, refrigerator, navigation lights

Navigation Equipment

B&G – NEW 2019 (auto pilot screen and autopilot computer, chart plotter, Multifunction instrument)
C-MAP MAX-N+ AS-Y050
AIS Transponder (watchmate X3-6000)

Radios

B&G V20

Entertainment

Pioneer Radio FM

Construction Details

GRP

Deck Equipment

2 x Lewmar 65 winch, 6 x Lewmar 43 winch, 2 x Lewmar 46 winch, Shore power plug (50 Amp – 110/220V), 2 x horse shoe sling, 2 x Barbossa line block (12mm – 20mm), Windex wind generator, Navtec Hydraulic Voom Bang, 4 x air vent, 3 x heat vent, Soft-top Bimini and dodger , pushpit railing (stainless steel) , all around safety railing (steel wire), 10 x stanchions (5 port , 5 starboard), right-hand and left-hand grab rail by entrance , compass, auto pilot, remote control B&G windlass, large helm , 4 x big opening hatches, car x 2 for running backstay

Rig and Rigging

Masthead sloop rig with rod rigging on keel stepped mast with 3 spreaders.

Sails

Assymetric spinnaker: 1
In furl mainsail: 1
Head sail: 1

Steering

Helm x 1
Auto Pilot (B&G - new 2019)

General Equipment

Vacuum cleaner:2 units
1x binocular

Safety Equipment

Depth sounder (with 1 spare – new unit)
Fire extinguisher

Horse shoe slings: 2
26kg Rocna Anchor (New, 2019)

Tenders

1x 12 meters dinghy (no outboard)

Maintenance

Perkins engine was serviced in June 2019
All navigation system upgraded in April 2019 (all B&G)

Exclusion

No outboard engine for dinghy

Vessel History

The current owner purchased her in January 2018.
He has been getting her prepared to be launched in the same year.
Health issues halted the launching plan.
In July 2019 the owner had stroke and the launching had to be cancelled again.
Finally, he decided that he is not fit to have her sailing on his own, hence selling her is the only option

Comments

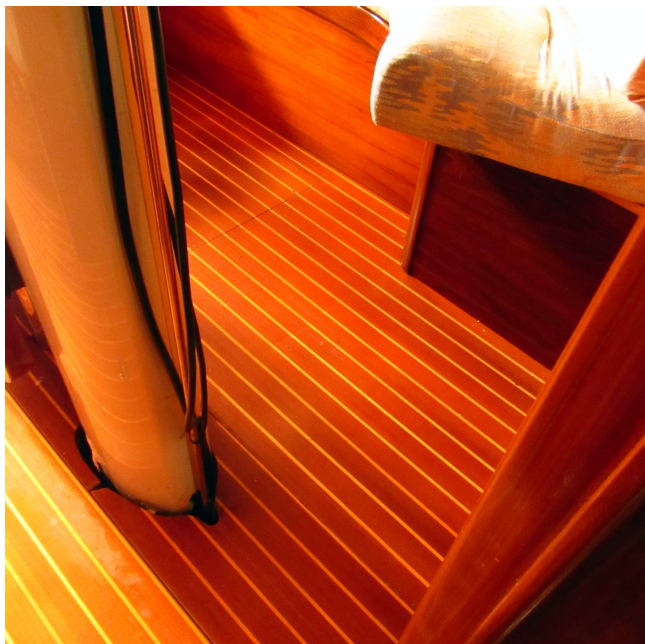
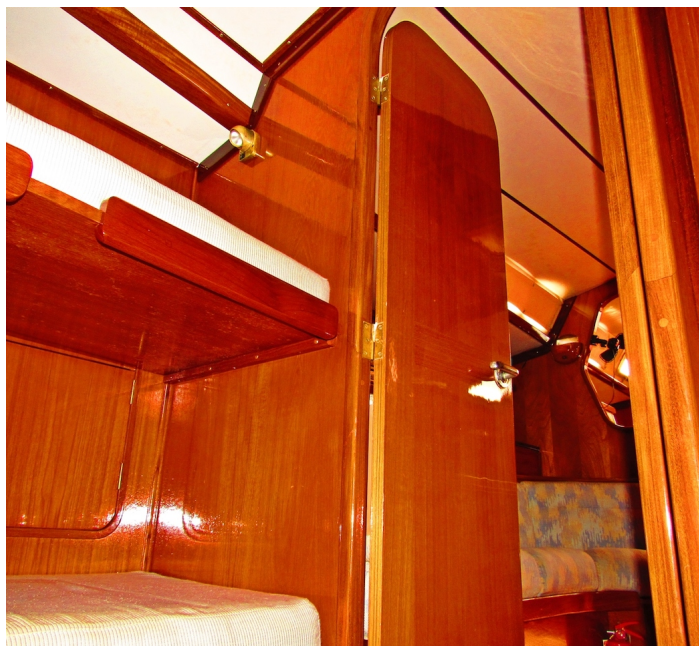
"This Beneteau is very well kept, solid wood interior finishing is still in very good condition. Definitely a great bargain with all new navigation system installed.
Motivated seller! Contact us today for viewing!"









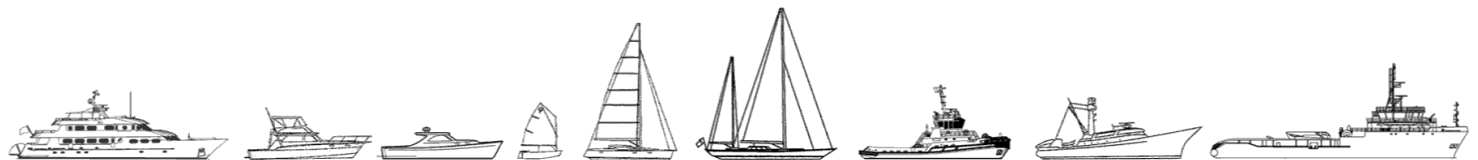








The details of all vessels are offered in good faith but we cannot guarantee or warrant the accuracy of this information nor warrant the condition of the vessel. Any buyer should instruct their agents, or their surveyors, to investigate such details as the buyer desires validated. This vessel is offered subject to sale, price change, location or withdrawal without notice.



AUSTRALIA - BULGARIA - INDIA - INDONESIA - ITALY - MALAYSIA - NEW ZEALAND - PANAMA - PHILIPPINES - SINGAPORE - SPAIN - UK - USA - VENEZUELA - VIETNAM