



# SEABOATS

MARINE BROKERS WITH A GLOBAL APPROACH

AUSTRALIA - BULGARIA - INDIA - INDONESIA - ITALY - MALAYSIA - NEW ZEALAND - PANAMA - PHILIPPINES - SINGAPORE - SPAIN - UK - USA - VENEZUELA - VIETNAM

[sales@seaboats.net](mailto:sales@seaboats.net) - [www.seaboats.net](http://www.seaboats.net)

## 30m Steel Passenger Charter Catamaran



**Listing ID - 1577**

**Description** Mariart 303 Steel Catamaran

**Date** 2017

**Launched**

**Length** 30m (98ft 5in)

**Beam** 10m (32ft 9in)

**Draft** 3.15m (10ft 4in)

**Location** Thailand

**Broker** Clive Bennett  
[clive.bennett@seaboatsbrokers.com](mailto:clive.bennett@seaboatsbrokers.com)  
+64 27 494 9799

**Price** USD 850,000

This Mariart 303 Catamaran has been built by the highly regarded Mariart Shipyard Thailand. With a massive capacity of 310 passengers, this vessel offers flexibility for general passenger, charter cruise and tourism ferry services.

It features three wide and spacious decks. Each deck has a large walkway around the perimeter allowing guests to enjoy a leisurely stroll, taking in surrounding sights. The bottom deck has a huge area for seating and tables if required. On the second deck there is a stage area and surrounding seating. Up on the third deck offers incredible 360 degrees views. There are also three separate bars located onboard.

Being a twin hull design constructed from thick steel it is very stable even in rough weather conditions. The vessel has been professionally maintained by one owner since launching and operated by professional crew including captain, deckhands and hostesses.

Perfect for Corporate events and parties - Stage with multi laser disco lighting system. DJ Booth and sound system - 3 large full bars - Cabaret show area - Huge dining room area - Large spacious decks / walkways - 6 lady's toilets & 4 gent's toilets

**Specification:**

Steel structure

Gross tonnage: 233t

Net Tonnage: 90t

Superstructure consists of main deck, party deck and sun deck

Windows, window frames and windscreen

Stainless steel handrails

Zinc Anodes

Painting with International brand

Zinc primer on steel structures and plates before welding/assembly

Primer/coating

Top coat for exterior and interior

Deck/door paint with non-skid

**Engines:**

2 x Cummins KTA 19-M each 500 HP @ 1800RPM

Cruising Speed: 8-10knots

Engine Hours:

Port: 2,500 hr,

Starboard: 2,400 hr.

2 sets of engine cooling system and exhaust system

**Gear boxes, Generators and Propulsion:**

2 x Top One Marine Power gear boxes ratio 3 -3.5 C56M series each 45KW

**Generators:**

2 x Cummins Generator 30 Kva

**Steering:**

Steering - Electronic hydraulic

3 steering stations control

**Other:**

2 sets of shafts. stem tube, propeller, rudder and steering wheel

2 sets of Anchors

10 x submersible pumps, 4 x fresh water pumps, and 4 x black tank pumps

**Tankage:**

15,000L water tanks

2 x 3000 L Fuel tanks

2 x 500L Day tanks

4 x Black tanks (GRP materials)

**Nav and Electrical System:**

Navigation - Raymarine & GPS

AIS Transponder

Cabin and navigating lights  
Electrical system and electronic control cabinet  
GPS and sounder

**Interior:**

Restroom  
12 toilets (for both lady & gentleman)  
8 basins (for both lady & gentleman)  
Including punitions and piping

**Kitchen Galley:**

4 dish washing sinks  
4 stoves with gas storage and solid gas piping  
Long table/bench  
Cabinet, cur Bin and air condition  
Refrigeration - Stainless 4 door refrigerator and freezers

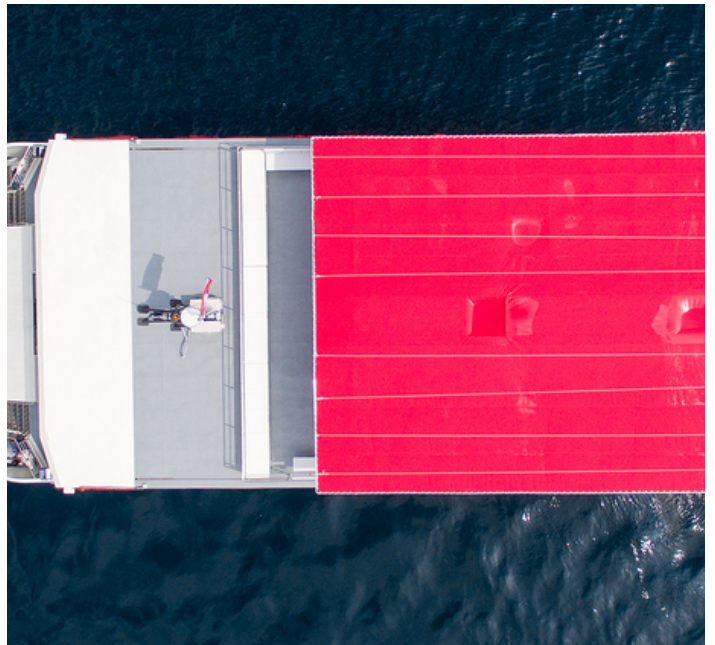
**General:**

Bridge with air conditioning  
DJ sound control room  
Ceiling and lights for dining area  
2 sets of showers on transom platform  
GRP seats on party deck for 300 passengers Counter bar on main deck  
Canvas top with stainless steel frames on sun deck for cut-off area  
2 fresh water taps for main deck and party deck

**Safety:**

First-Aid Station  
Life raft for 300 passengers  
Life jacket for 300 passengers  
Fire extinguishing pump  
2sets of fire hydrant  
6 x15lb fire tank  
Windscreen wiper  
GPS and Sounder

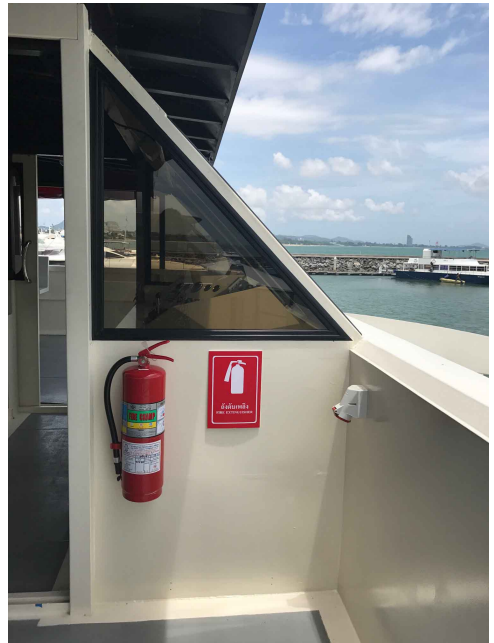
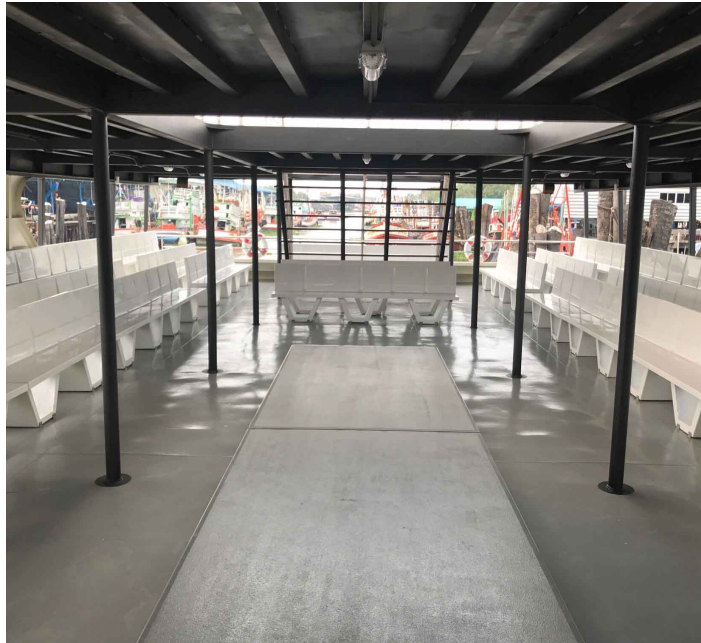
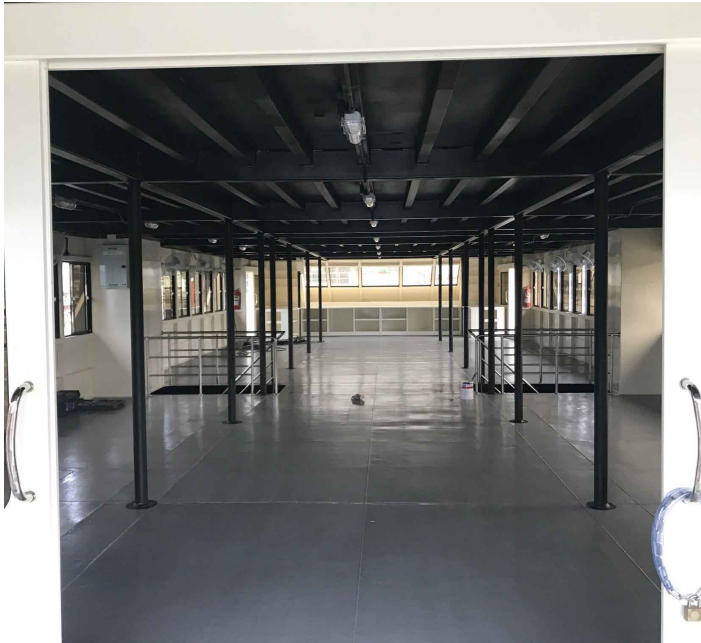
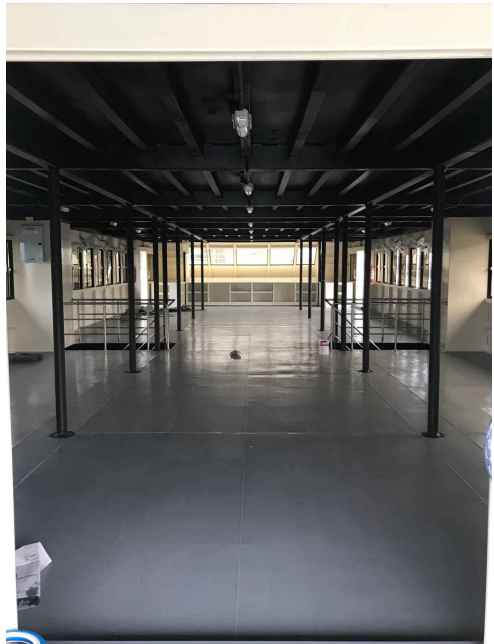




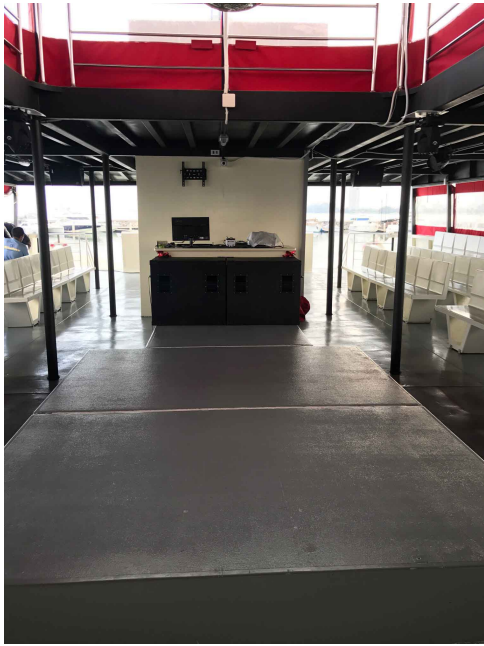




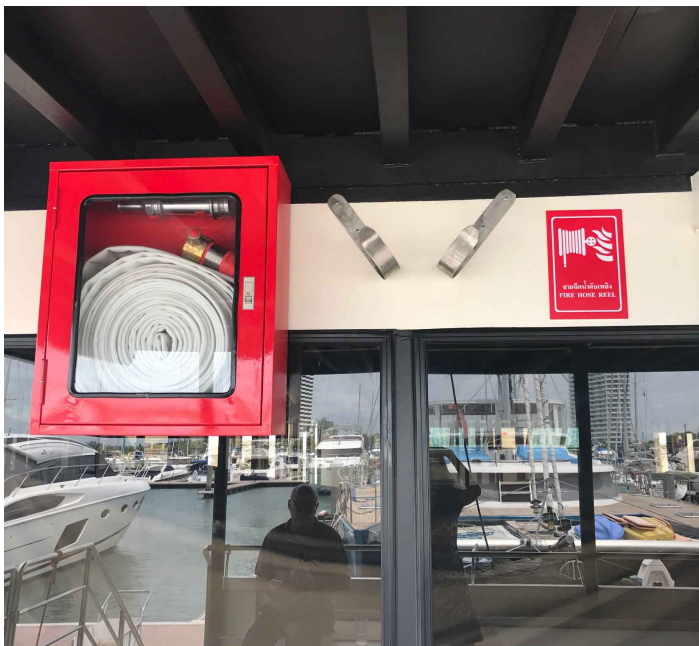
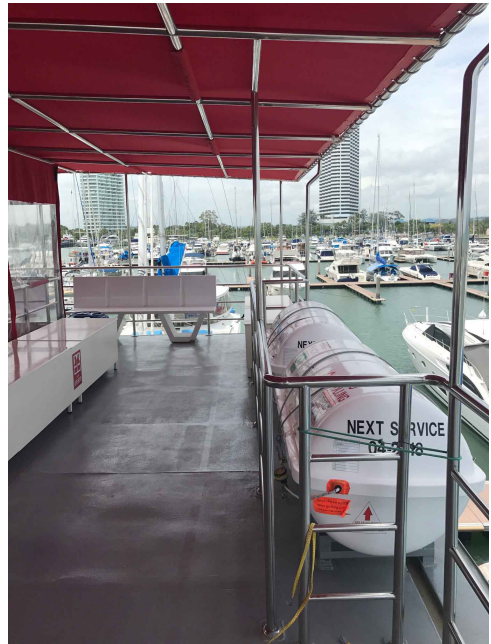








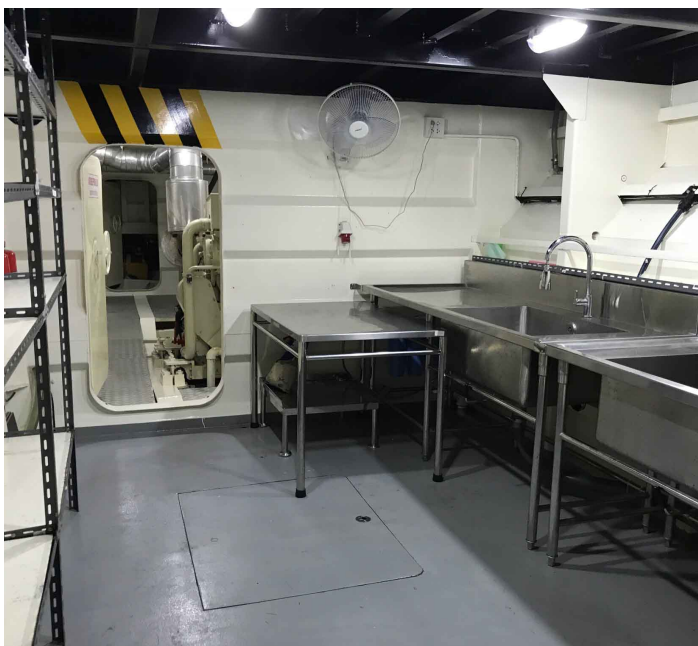






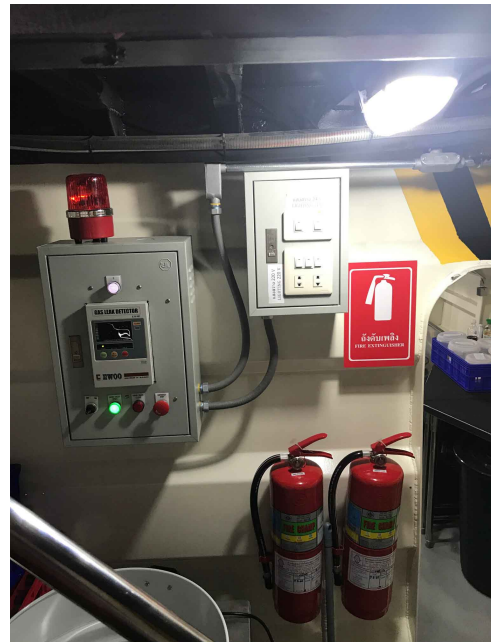




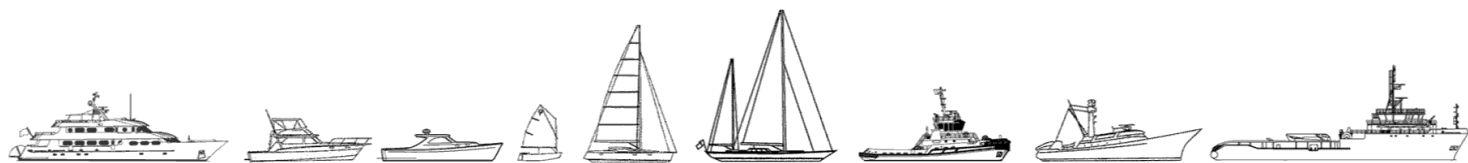








The details of all vessels are offered in good faith but we cannot guarantee or warrant the accuracy of this information nor warrant the condition of the vessel. Any buyer should instruct their agents, or their surveyors, to investigate such details as the buyer desires validated. This vessel is offered subject to sale, price change, location or withdrawal without notice.



AUSTRALIA - BULGARIA - INDIA - INDONESIA - ITALY - MALAYSIA - NEW ZEALAND - PANAMA - PHILIPPINES - SINGAPORE - SPAIN - UK - USA - VENEZUELA - VIETNAM