



SEABOATS

MARINE BROKERS WITH A GLOBAL APPROACH

AUSTRALIA - BULGARIA - INDIA - INDONESIA - ITALY - MALAYSIA - NEW ZEALAND - PANAMA - PHILIPPINES - SINGAPORE - SPAIN - UK - USA - VENEZUELA - VIETNAM

sales@seaboats.net - www.seaboats.net

13000T Deck Ship



Listing ID - 1760

Description 13000T Self-propelled barge

Date 2016

Launched

Length 139.50m (457ft 8in)

Beam 32m (104ft 11in)

Location China

Broker Franklin Taylor
franklin.taylor@seaboatsbrokers.com
+64 27 276 5383

Price USD 10 Million

General description

The Vessel will be a self-propelled deck cargo ship with twin diesel engines and fixed pitch propellers driven by two marine diesel engines. The vessel will be suitable for carrying large or very large objects and equipment.

The hull is single decked, double bottomed, all welded steel. The Vessel shall have a fully welded continuous upper deck.

Living quarters and wheelhouses will be located at fore. Water ballast tanks, engine room, fore peak tank, fuel oil tanks, fresh water tanks, etc. shall be arranged as shown on the General Arrangement Plan.

LOA: 139.50 m

LPP: 131.40 m

Breadth moulded: 32.00 m

Depth moulded: 8.00m

Designed Draft: 5.40 m

Displacement: 18951.10 t

Number of Crew: 25 persons

Total tonnage: 9586

Net tonnage: 5368

Main Engines & Gearboxes

Type: 6G32

Number of set: 2 sets

Max. continuous rating (MCR): 2665 kW

Revolution at MCR: 600r/min

Gearboxes

Type: GWC60.66

Nominal ratio: 4:1

Diesel generators: 2 x HGT6320IIID, 63kNm

Main diesel generators: 3 x CCFJ360J, KTA19-D(M), 403 kW, 6 cylinder, 1500r/min

Emergency diesel generators: 1 x CCFJ120J, 6CTA8.3-GM155(diesel type), 6 cylinder, 155 kW, 1500r/min

Speed

The speed of the Vessel at the designed draft on even keel will be approximately 11.50 knots with the max.continuous output of main engine(MCR), with clean bottom in calm and deep sea under beaufort scale of 3.

Endurance

Endurance based on total heavy fuel oil tank capacity and the defined service speed with 10% fuel at end of voyage would be approx. 12000 nautical miles.

Propeller: 2 set, 4 Blades, fixed pitch type, Cu3, 3600mm

Bow Thruster: 1 set, 60 kN, 350 kW, 1300mm, 4 Blades

Life saving Appliances

10 x Life buoys

37 x Life jackets (with Lifejacket light)

25 x Immersion suits

3 x Inflatable liferafts

Lifeboats (Two totally enclosed lifeboat(25P) One of them is also a rescue boat

In addition 4 Lifeline throwing appliances 12 Rocket parachute flare signals.

Fire Fighting Equipment

5kg Fire extinguisher(powder)

19 x 9L Fire extinguisher(foam)

1 x wheeled fire extinguisher(45L)

1 x wheeled fire extinguisher(135L)

1 x 20L portable foam applicator unit or relevant spare tank

Signal Equipment

1 x Mast light

1 x port light

1 x starboard light

1 x taillight

2 x red all-round lights (action of lose control light)

2 x white all-round lights (action of riding light),
daylight signalling lamp (1),
large-size spheres (3),
#4 chinese flags (4),
#3 chinese flags (2),
#2 international signal flags (2),
1 x hand flag
1 x large-bell
1 x large-whistle
1 x gong

Navigation equipments

One (1) Liquid, reflector type, 175mm standard magnetic compass installed on compass deck, with periscope to wheelhouse. one (1) azimuth mirror and two (2) azimuth circles to be provided.

1 x spare bowl for magnetic compass
1 x hydrometer (for seawater)
1 x chronometer (quartz)
1 x star globe
1 x barograph (fitted in chart room)
2 x wet and dry thermometer
1 x portable anemometer
1 x station pointer
2 x protractors with handle
1 x 350mm divider
1 x 1 m ruler
3 x function calculator
3 x binocular (marine type, 7 time)
3 x aneroid barometer (wheelhouse, Captain's day room, chart room)
4 x thermometers (for air), 2 on deck & 2 in engine room
1 x thermometer (for seawater)
2 x hand lead for sounding (one of weight 5kg wire 52m, one of 13kg wire 155m)
2 x sextants
6 x inclinometers (clock type, fitted in engine control room, wheelhouse, Captain's day room, Chief officer's day room, deck office & passageway)
1 x inclinometer (pendulum type, fitted in engine room)
2 x sets of navigational-ruler (one of 300mm, one of 500mm)
2 x dividers for chartwork (one of 150mm, one of 200mm)
8 x weight with blanket for chart work
1 x brush for brushing charts
2 x magnifying glass (D= 90mm) + triangular ruler set 360mm
2 x sets of parallel ruler (550mm)

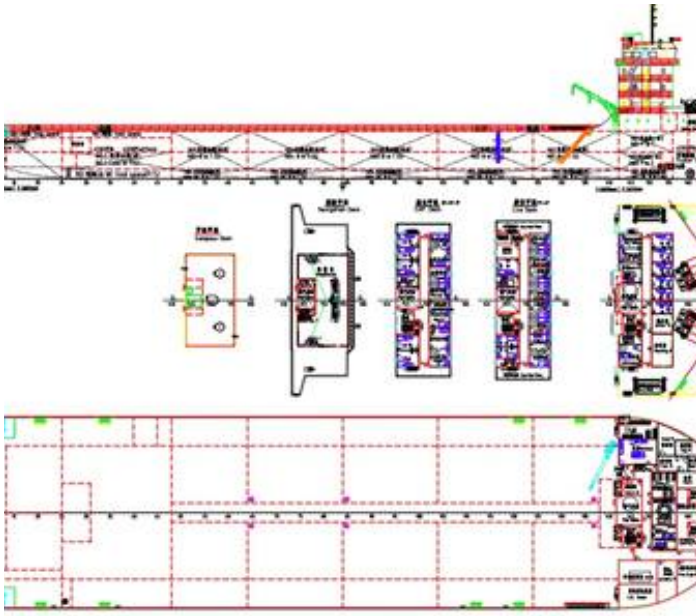
Accommodation

Accommodation quarter to be divided into living space, public space, navigation & control space, sanitary space, catering space, machinery space and storage, which are provided as shown on the G.A. Plan









The details of all vessels are offered in good faith but we cannot guarantee or warrant the accuracy of this information nor warrant the condition of the vessel. Any buyer should instruct their agents, or their surveyors, to investigate such details as the buyer desires validated. This vessel is offered subject to sale, price change, location or withdrawal without notice.



