



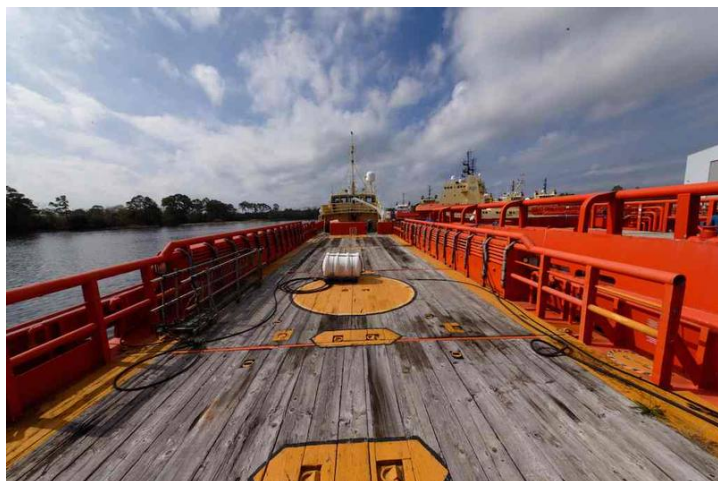
# SEABOATS

MARINE BROKERS WITH A GLOBAL APPROACH

AUSTRALIA - BULGARIA - INDIA - INDONESIA - ITALY - MALAYSIA - NEW ZEALAND - PANAMA - PHILIPPINES - SINGAPORE - SPAIN - UK - USA - VENEZUELA - VIETNAM

[sales@seaboats.net](mailto:sales@seaboats.net) - [www.seaboats.net](http://www.seaboats.net)

## 150ft Fast Support Vessel



### Listing ID - 1772

Description	150ft FSV
Date Launched	1998
Length	45.79m (150.3ft)
Beam	9.75ft (32ft)
Location	USA
Broker	John Kearns <a href="mailto:john.kearns@seaboatsbrokers.com">john.kearns@seaboatsbrokers.com</a> +64 21 400 805

Place of Built: Loreauville, LA, United States

Year Completed: 1998

LOA: 150.3ft

Breadth: 32ft

Depth: 13ft

GRT: 98

NRT: 67

Hull Material: Aluminum

Horsepower: 6600

Propulsion: Diesel Reduction

### Lifesaving equipment

90 x Life Preservers (Adult)

3 x Ring buoy with lights, with line attached

1 x Rescue boats / Platforms

4 x Inflatable rafts  
EPIRB

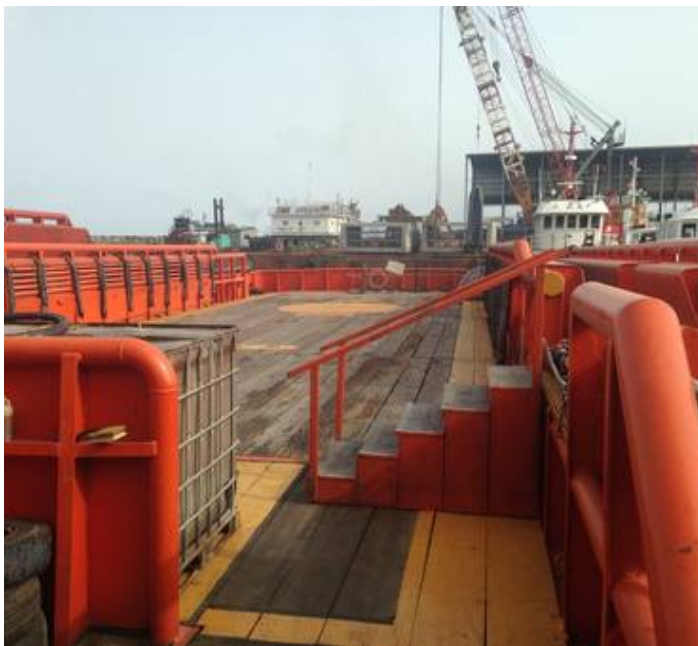
### **Fire Fighting Equipment**

1 x Fire pumps  
Fixed Extinguishing Systems  
Fire Extinguishers - hand portable and semi-portable

In addition, this vessel may carry 84 passengers, 2 other persons in crew, 0 persons in addition to crew, and no others. Total persons allowed are 90



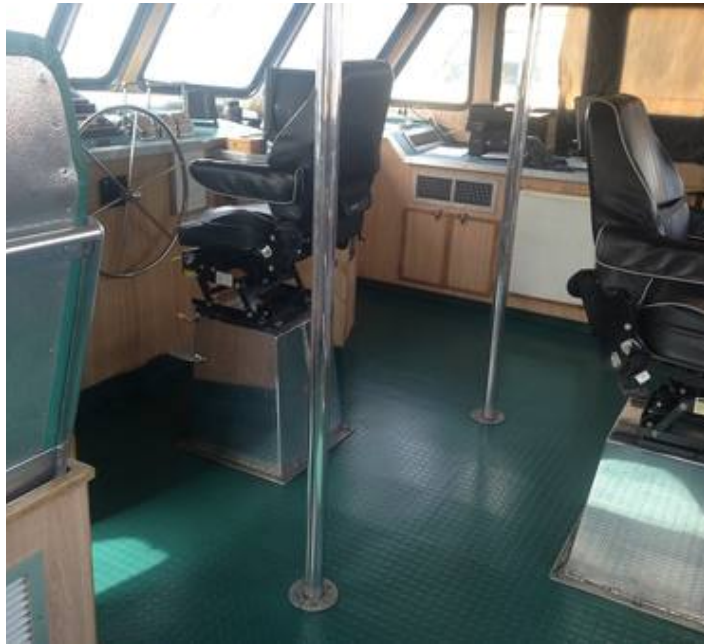




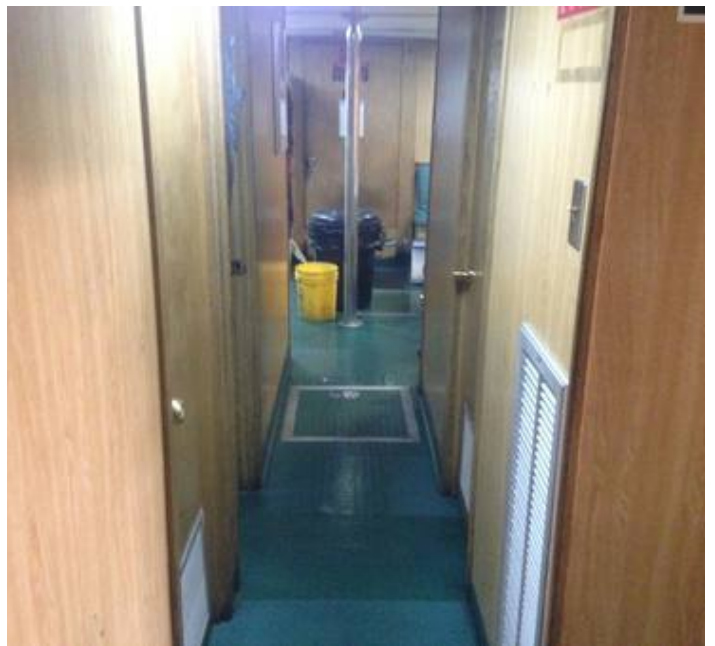
































The details of all vessels are offered in good faith but we cannot guarantee or warrant the accuracy of this information nor warrant the condition of the vessel. Any buyer should instruct their agents, or their surveyors, to investigate such details as the buyer desires validated. This vessel is offered subject to sale, price change, location or withdrawal without notice.





