



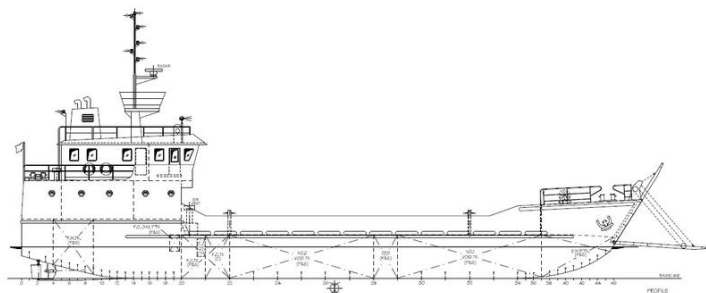
# SEABOATS

MARINE BROKERS WITH A GLOBAL APPROACH

AUSTRALIA - BULGARIA - INDIA - INDONESIA - ITALY - MALAYSIA - NEW ZEALAND - PANAMA - PHILIPPINES - SINGAPORE - SPAIN - UK - USA - VENEZUELA - VIETNAM

[sales@seaboats.net](mailto:sales@seaboats.net) - [www.seaboats.net](http://www.seaboats.net)

## NEW BUILD - 38m Landing Craft



### Listing ID - 1871

**Description** NEW BUILD - 38m Landing Craft

**Date** Built to Order

**Launched**

**Length** 38.8m (124.7ft)

**Beam** 9m (29.53ft)

**Draft** 1.96m (6.43ft)

**Location** ex Shipyard, Malaysia

**Broker** Geoff Fraser  
[geoff.fraser@seaboats.net](mailto:geoff.fraser@seaboats.net)  
+64 21 61 222 5

LOA: 38.8m (124.7ft)

LBP: 37m (121.4ft)

Beam Moulded: 9m (29.53ft)

Depth Moulded: 2.7m (8.9ft)

Design Draft: 1.96m (6.43ft)

Accommodation: 18 men

Ship's Fuel: 33 Tonnes (approx.)

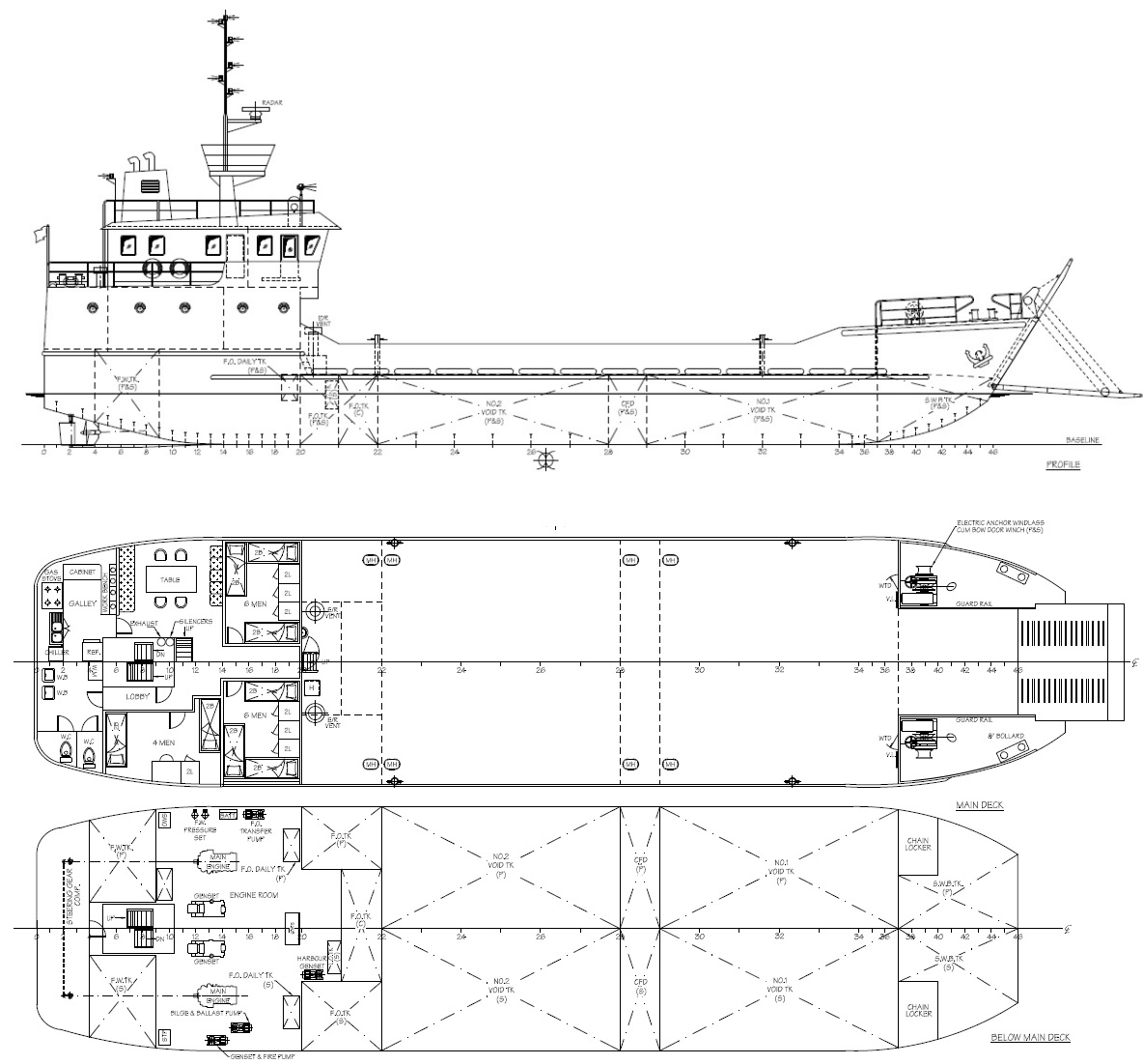
Ship's Fresh Water: 40 Tonnes (approx.)

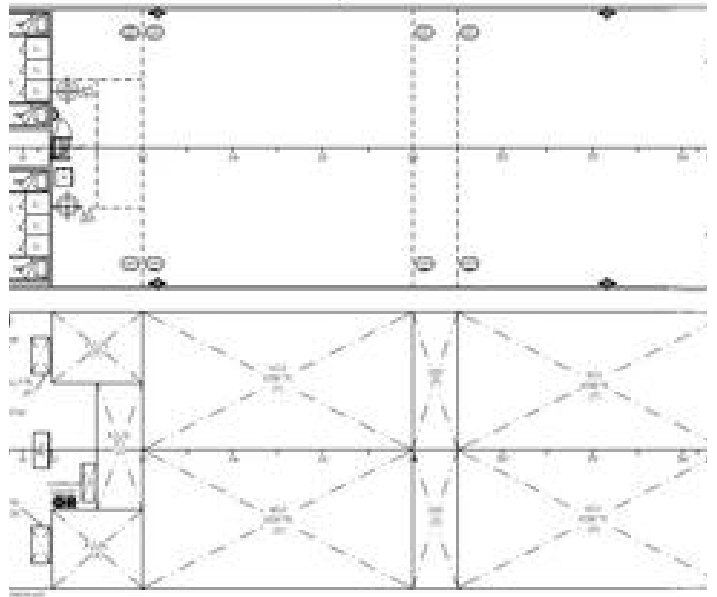
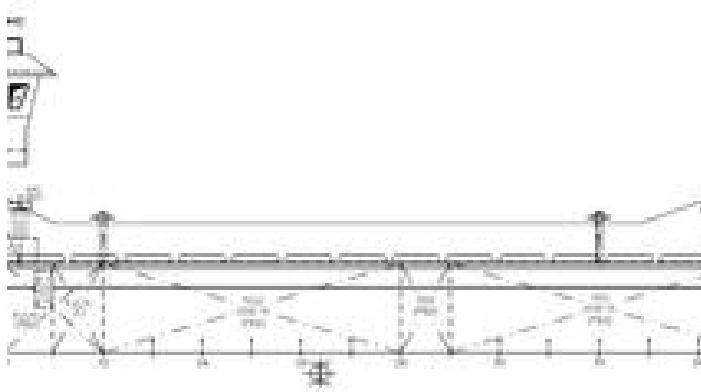
Cargo Fuel Oil: 200 Tonnes (approx.)

Cargo Fresh Water: 195 Tonnes (approx.)

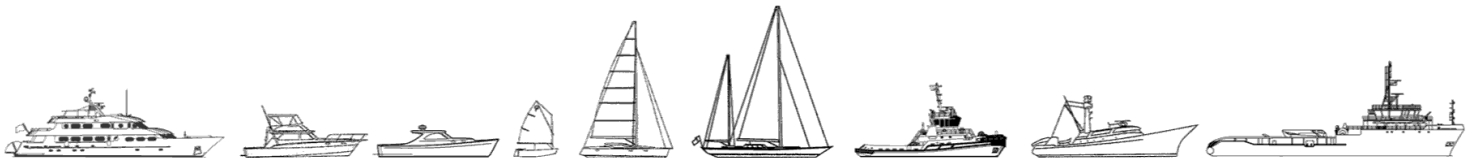
Main Engine: 2x 350 HP @ 1800rpm

Gearbox: Ratio: 3.5:1





The details of all vessels are offered in good faith but we cannot guarantee or warrant the accuracy of this information nor warrant the condition of the vessel. Any buyer should instruct their agents, or their surveyors, to investigate such details as the buyer desires validated. This vessel is offered subject to sale, price change, location or withdrawal without notice.



AUSTRALIA - BULGARIA - INDIA - INDONESIA - ITALY - MALAYSIA - NEW ZEALAND - PANAMA - PHILIPPINES - SINGAPORE - SPAIN - UK - USA - VENEZUELA - VIETNAM