



SEABOATS

MARINE BROKERS WITH A GLOBAL APPROACH

AUSTRALIA - BULGARIA - INDIA - INDONESIA - ITALY - MALAYSIA - NEW ZEALAND - PANAMA - PHILIPPINES - SINGAPORE - SPAIN - UK - USA - VENEZUELA - VIETNAM

sales@seaboats.net - www.seaboats.net

New Build - 24m Crew Supply/Transporter Vessel



Listing ID - 1968

| | |
|----------------------|---|
| Description | 24m Crew Supply / Transporter Vessel |
| Date Launched | Built to order, delivery 6-8 months from signed contract |
| Length | 23.5m (77ft) |
| Beam | 5.5m (18ft) |
| Draft | 2.8m (9ft 2in) |
| Location | Singapore |
| Broker | John Kearns john.kearns@seaboatsbrokers.com +64 21 400 805 |
| Price | USD 1.2m |

24m Crew Supply/Transporter Vessel, built to Bureau Veritas class. Powered by twin Cummins KTA 19 640 BHP and providing a top speed of 22 knots & service speed of 16 knots. Work Deck area 53m², Deck Loading 1 ton/m². Available in 12 or 24 Passenger configurations. Crew accommodation 4 crew in 2 cabins.

Length O.A.: 23.5m
Beam Moulded: 5.5m
Depth Moulded: 2.8m
Classification: Bureau Veritas

Main Machinery

Main Engines: 2 x Cummins KTA 19
Aux Engines: 2 x Cummins 25 KVA

Capacities

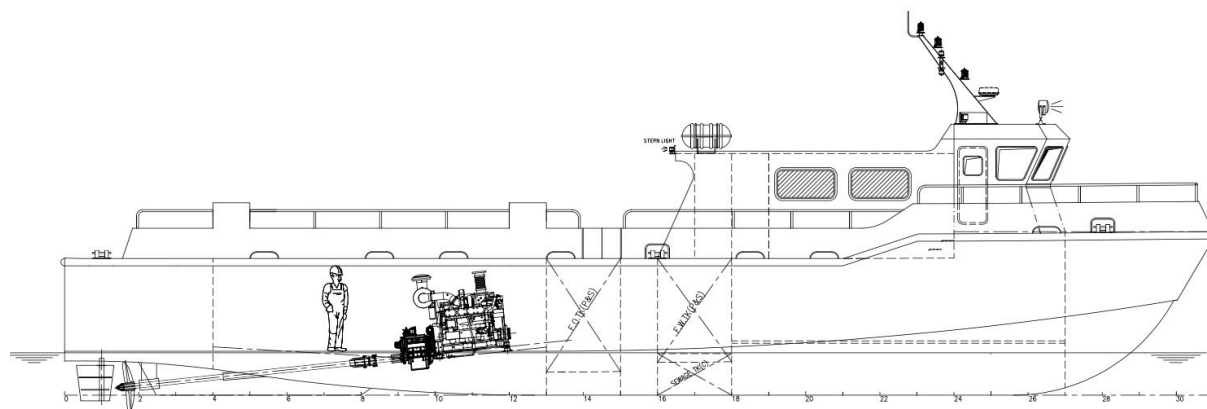
Fuel Oil: 14,000 litres (approx.)
Fresh Water: 10,000 litres (approx.)
Cargo Deck: 53 sq. metres (approx)
Deck Loading: 1 ton/m2

Accommodation and Seating

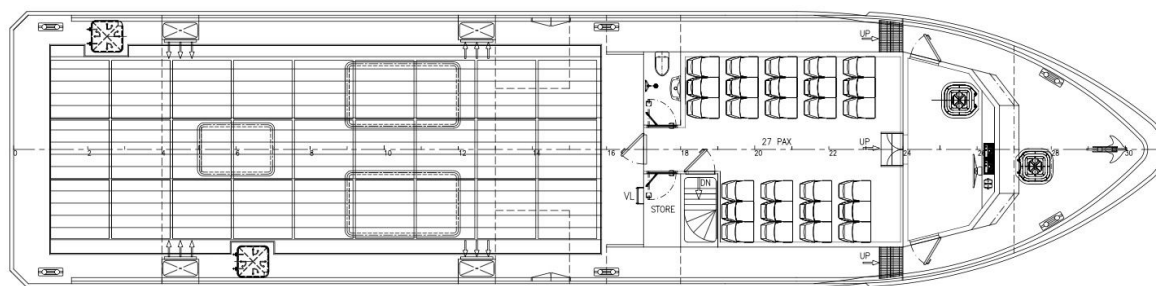
Seating: Up to 24 (pending configuration)
Cabin / Bunk: 2 / 4
Galley: Fitted
Air-conditioning: Fitted

Navigation and Communication Equipment

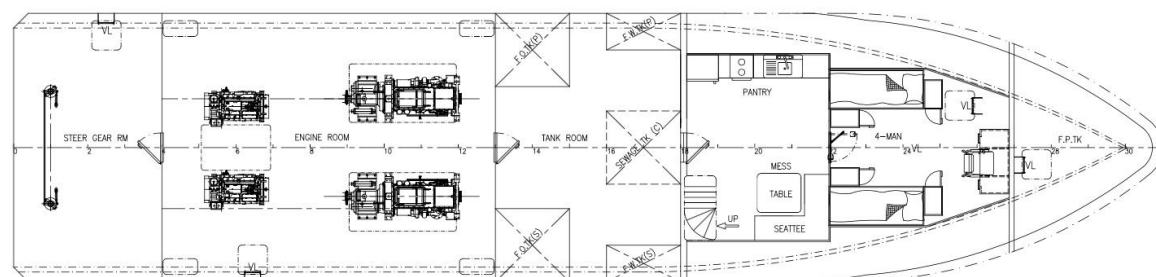
Radar: 1 x Furuno 1835
Search Light: 1 x 500W
Magnetic Compass: Ritchie Navigator HB 71
GPS Navigator: Furuno GP 32
VHF: Sailor RT 6210
AIS: Raymarine AIS 250
Echo Sounder: Raymarine ST 60
Hand Held VHF: 2 x Sailor SP 3520



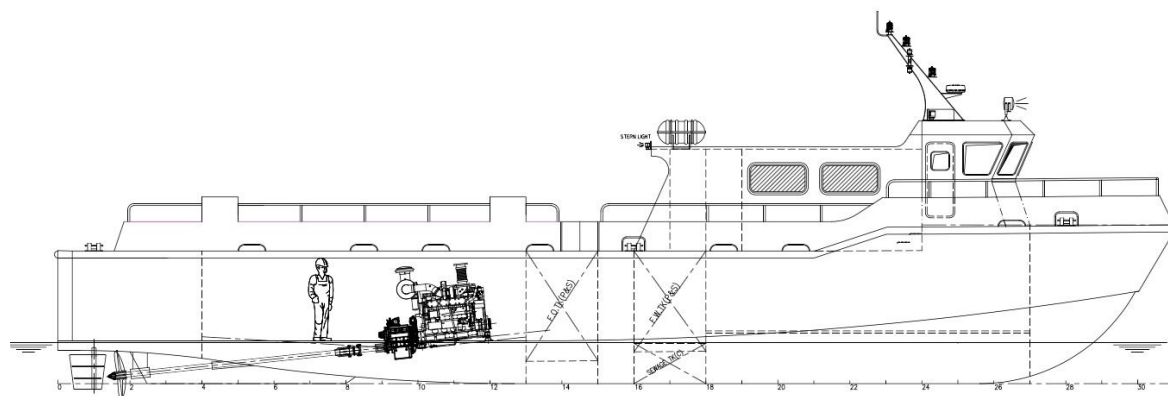
PROFILE



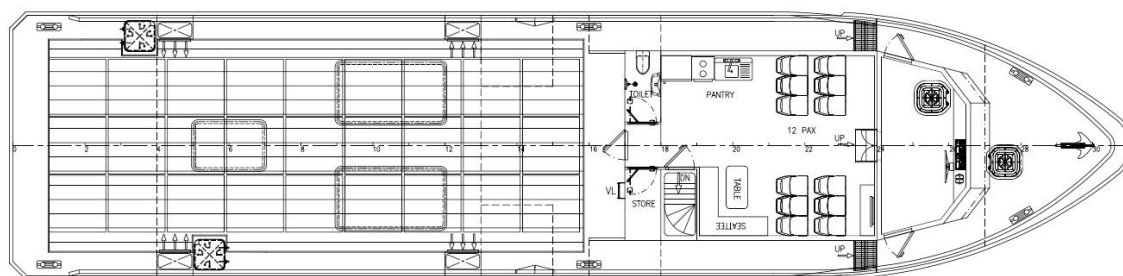
MAIN DECK PLAN



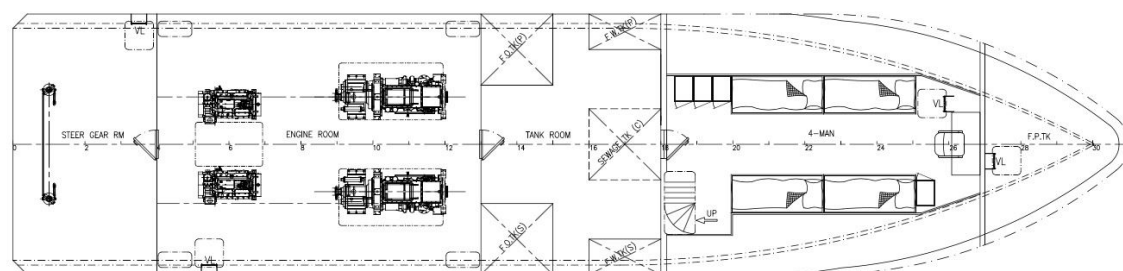
BOTTOM PLAN



PROFILE

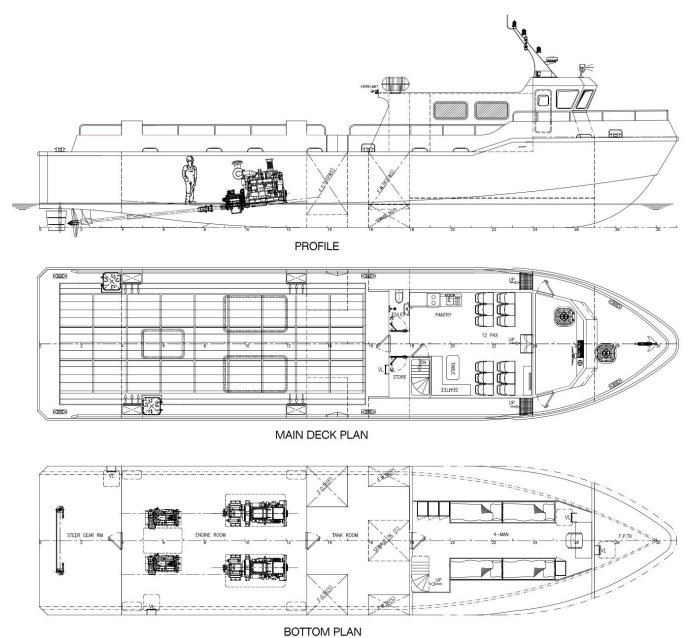
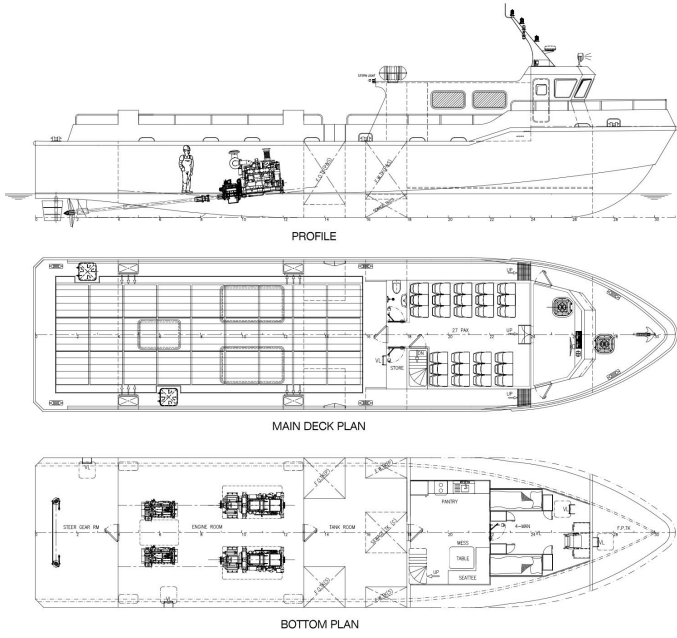


MAIN DECK PLAN



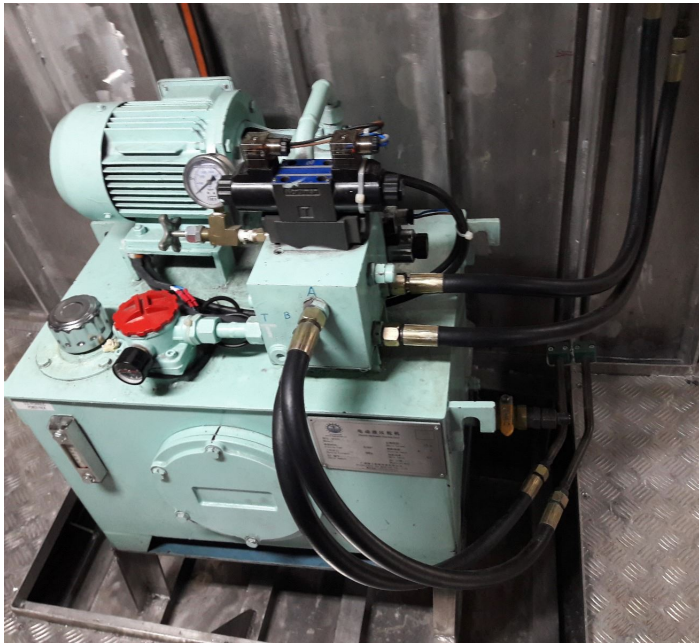
BOTTOM PLAN

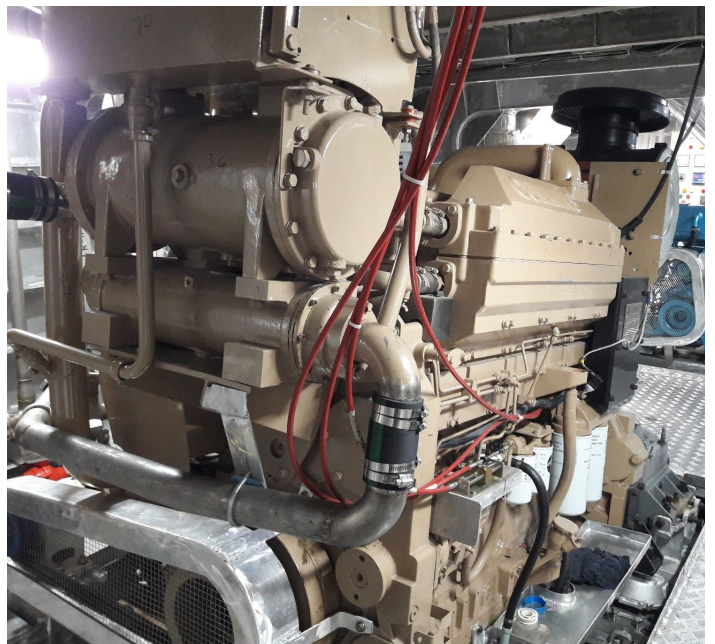
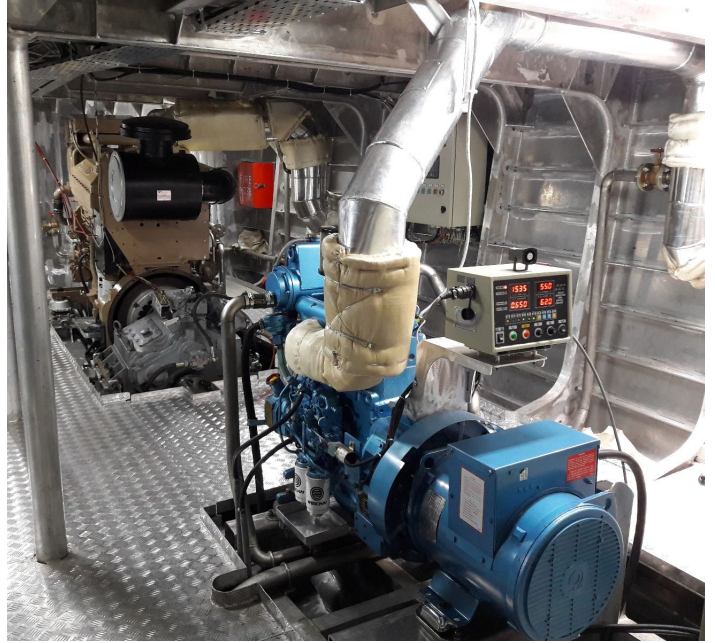




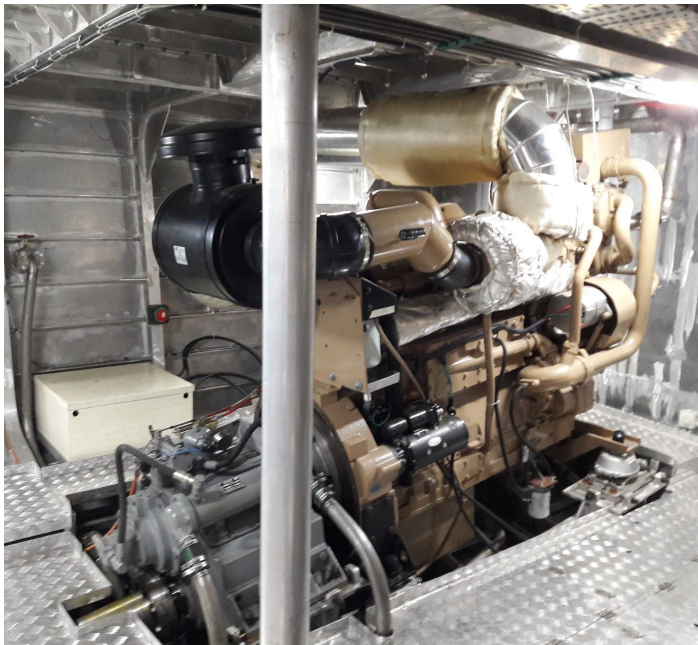












The details of all vessels are offered in good faith but we cannot guarantee or warrant the accuracy of this information nor warrant the condition of the vessel. Any buyer should instruct their agents, or their surveyors, to investigate such details as the buyer desires validated. This vessel is offered subject to sale, price change, location or withdrawal without notice.



