



SEABOATS

MARINE BROKERS WITH A GLOBAL APPROACH

AUSTRALIA - BULGARIA - INDIA - INDONESIA - ITALY - MALAYSIA - NEW ZEALAND - PANAMA - PHILIPPINES - SINGAPORE - SPAIN - UK - USA - VENEZUELA - VIETNAM

sales@seaboats.net - www.seaboats.net

Self-propelled Dive-support Crane and Work Barge for Charter



Listing ID - 1989

Description	Self-propelled Dive-support Crane and Work Barge for Charter
Date Launched	Rebuilt: 2009
Length	57m (187ft)
Beam	9.5m (31ft 2in)
Draft	1.30 / 1.80m (4ft 3in / 5ft 10in)
Broker	Richard Pierrepont richard.pierrepont@seaboatsbrokers.com +44 7798 607 323
Price	Rates quoted on request

Description: Self-propelled dive-support crane and work barge

Flag: Dutch

Call sign: PBCJ

IMO Number: 8937259

Class: N.S.I., Rhine-certificate and RINA 30 miles offshore

Range: 3000 Nautical miles

Rebuilt: 2009

Speed: 9 Knots

DIMENSION

Length: 57m

Width: 9.50m

Draft: 1.30 / 1.80m

GT: 417 GT

TANK CAPACITIES

Fresh water: 217.000 Ltr.

Drinking water: 17.000 Ltr.

Fuel capacity: 39.000 Ltr. (with transfer capability)

PROPULSION SYSTEM

Main engine: 2 x 300 HP CAT

Bow thruster: 150 HP

DECK LAYOUT

Telescopic crane: Luna 20T@3 M1

Knuckle boom crane: Fassi 150T/m¹ (radiographic controlled)

Mooring system: 4-point mooring system, fitted with 4x450 M

28 mm steel wire ropes and 4x 1.500 Kg

Delta flippers

Moon pool: Ø 800 mm

Free deck space: 250 M2

Deck load: 5 T/M2

ACCOMMODATION

Day accommodation: Max. 17 persons

Berths: 5 cabins, 4 x 2 + 1 x 1 bed.

TLQ for 4 persons optional

AUXILIARY EQUIPMENT

Generator(s) 1x 150 kVa - 1x 97 kVa

Spud pole (optional): 2x 27 M, hydraulic winches operated from bridge

Main anchors: 2x 500 Kg anchor, chain 100 M

Navigation Equipment: 3x VHF, magnetic compass, satellite compass, Navtex, Auto-Pilot, 2x Radar, 2x GPS, DGPS, navigation computer, survey computer, AIS, depth sounder, (satellite) telephone and internet

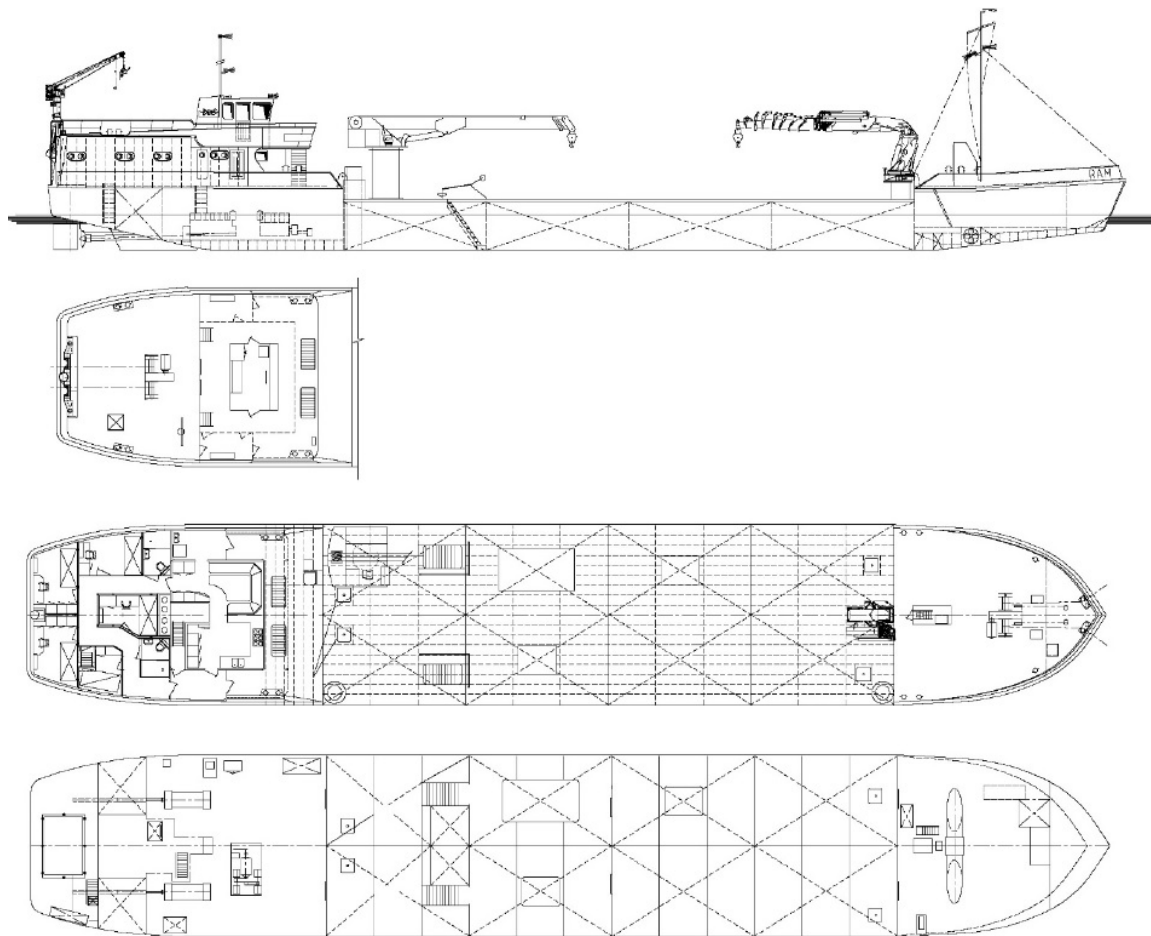
Diving support: Decompression chamber Ø 1500 mm, double lock, Lloyds certified (meets IMCA requirements)

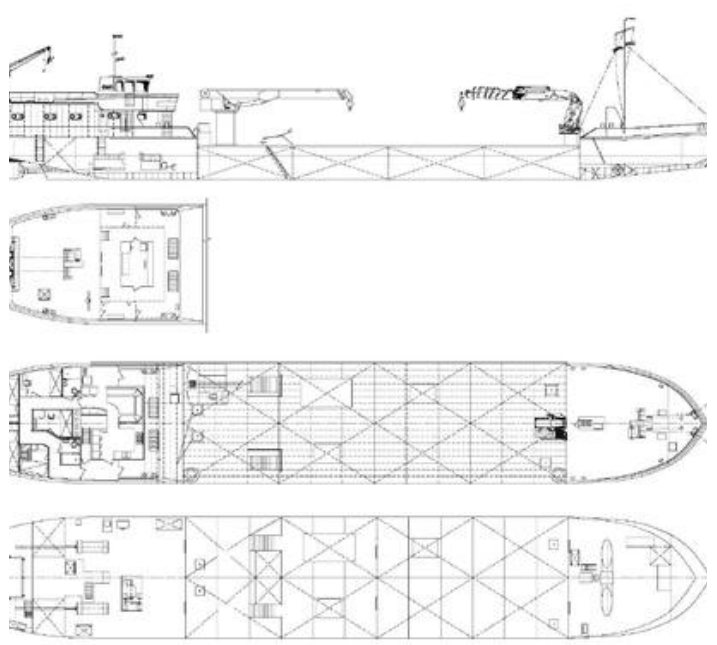
HP compressor 240 ltr/min @ 330bar

HP airbank 12 x 50 ltr @ 330bar

LP compressors 900 ltr/min + 1200 ltr/min @ 15bar

LP airbank 500ltr @ 15bar





The details of all vessels are offered in good faith but we cannot guarantee or warrant the accuracy of this information nor warrant the condition of the vessel. Any buyer should instruct their agents, or their surveyors, to investigate such details as the buyer desires validated. This vessel is offered subject to sale, price change, location or withdrawal without notice.

