



SEABOATS

MARINE BROKERS WITH A GLOBAL APPROACH

AUSTRALIA - BULGARIA - INDIA - INDONESIA - ITALY - MALAYSIA - NEW ZEALAND - PANAMA - PHILIPPINES - SINGAPORE - SPAIN - UK - USA - VENEZUELA - VIETNAM

sales@seaboats.net - www.seaboats.net

NEW BUILD - 29ft Harbour Launch and Harbour Pilot Boat



Listing ID - 2014

Description	NEW BUILD - 29ft Harbour Launch and Harbour Pilot Boat
Date Launched	Built to Order
Length	8.96m (29ft 4in)
Beam	3.04m (9ft 11in)
Location	ex factory, UK
Broker	Richard Pierrepont richard.pierrepont@seaboatsbrokers.com +44 7798 607 323
Price	As a guide only, approx 350,000 GBP ex works

Seaward Nelson 29 Harbour Launch and Harbour Pilot Boat

The Seaward Nelson 29 shares the same sea-kindly semi-displacement hull form as her larger sisters the ubiquitous Nelson 35, 40 and 42. She is available either as a Service Patrol Boat or in the dedicated aft wheelhouse, mid-engine Pilot Boat layout

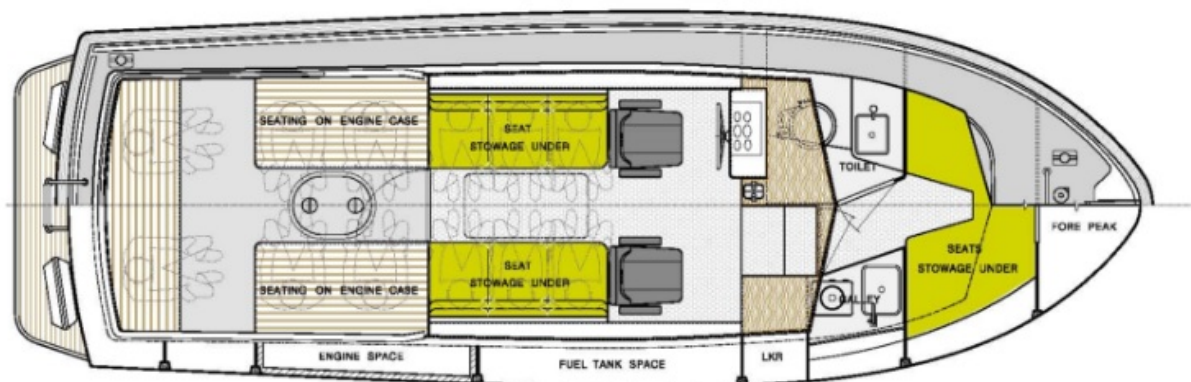
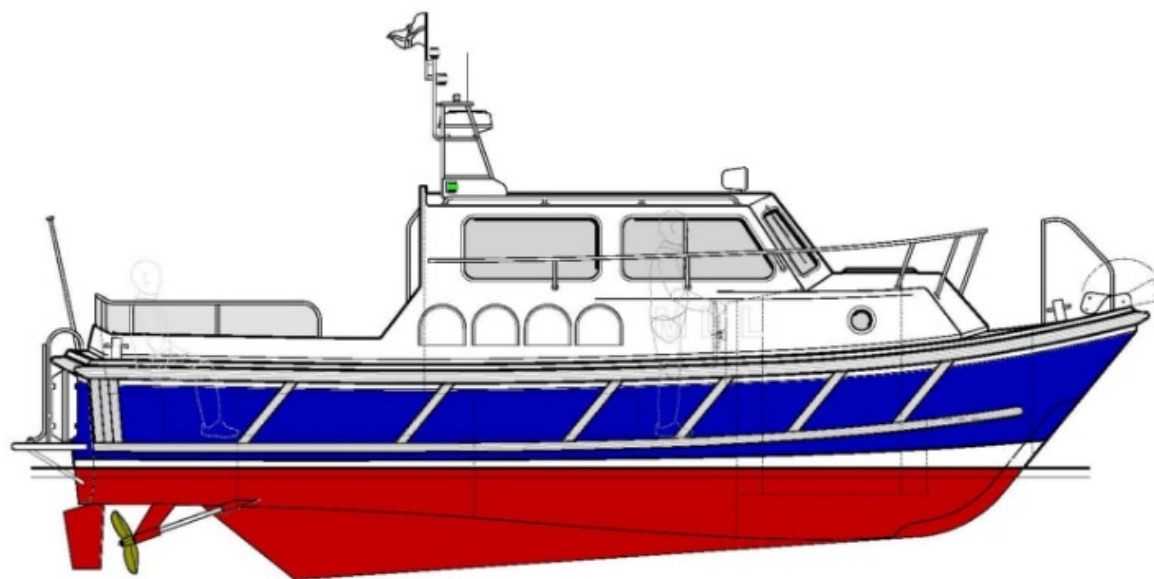
LOA: 8.96m

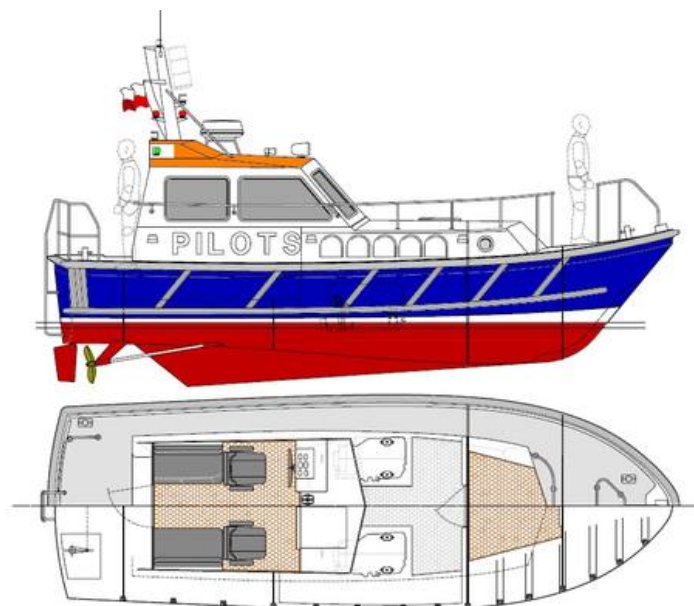
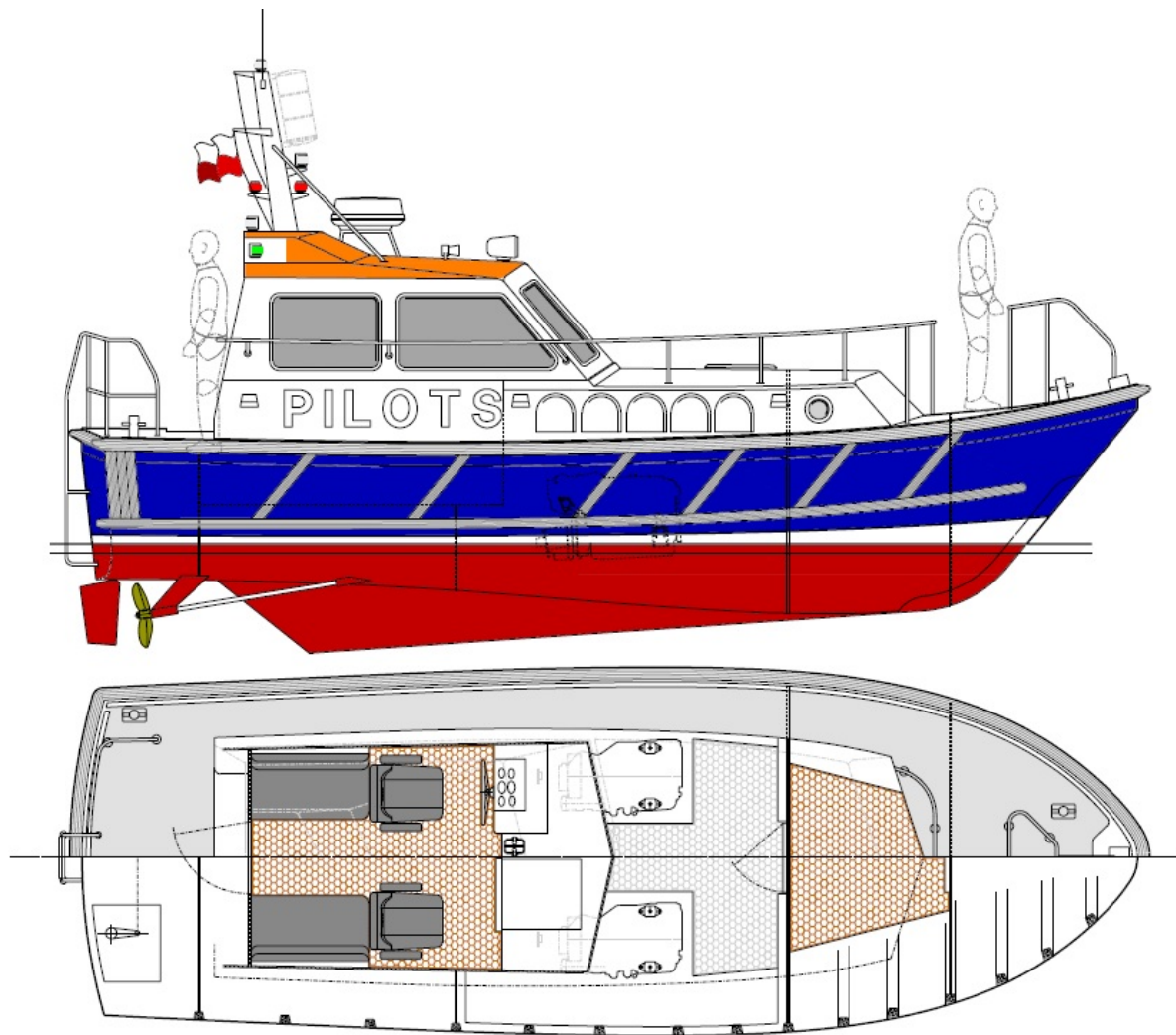
Length Hull: 8.69m

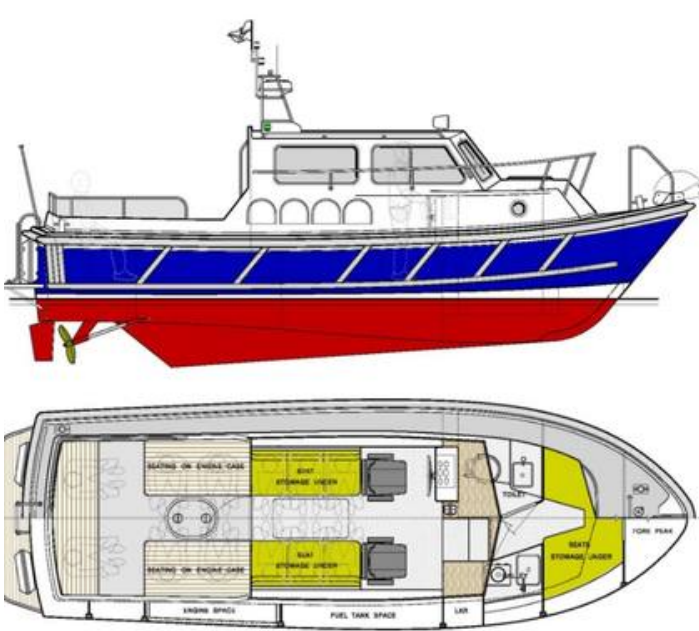
Length WL: 7.69m

Beam OA: 3.04m

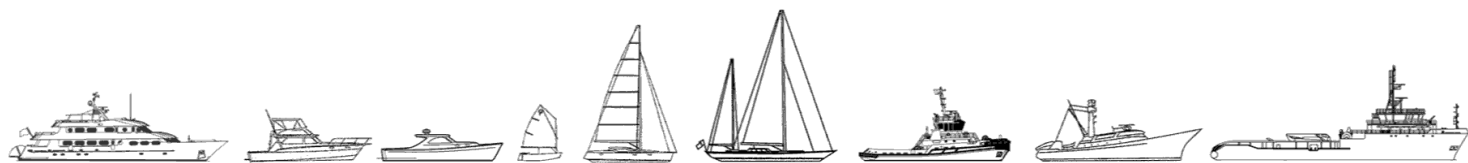
Beam Hull: 2.94m







The details of all vessels are offered in good faith but we cannot guarantee or warrant the accuracy of this information nor warrant the condition of the vessel. Any buyer should instruct their agents, or their surveyors, to investigate such details as the buyer desires validated. This vessel is offered subject to sale, price change, location or withdrawal without notice.



AUSTRALIA - BULGARIA - INDIA - INDONESIA - ITALY - MALAYSIA - NEW ZEALAND - PANAMA - PHILIPPINES - SINGAPORE - SPAIN - UK - USA - VENEZUELA - VIETNAM