



SEABOATS

MARINE BROKERS WITH A GLOBAL APPROACH

AUSTRALIA - BULGARIA - INDIA - INDONESIA - ITALY - MALAYSIA - NEW ZEALAND - PANAMA - PHILIPPINES - SINGAPORE - SPAIN - UK - USA - VENEZUELA - VIETNAM

sales@seaboats.net - www.seaboats.net

68m Ice Class Research / Survey Vessel.



Listing ID - 2049

Description	68.41m Research Vessel
Length	67.36m (221ft)
Beam	18.28m (59.97 Ft.) (W/Helideck Overhang)
Draft	5.52m (18.11 Ft.) (Max)
Location	Florida, USA
Broker	John Kearns john.kearns@seaboatsbrokers.com +64 21 400 805
Price	USD 1.6m

67m Seismic Research Vessel, built 1985 at Allied Shipbuilders Ltd., Vancouver, Canada to Lloyds class +100 A1 Ice Class 1 and converted/modified 1995 & 2001. Owner has recently spent USD 4.5 million on vessel. Powered by twin B&W Alpha Diesels rated at 3600hp each providing an economic speed of 11 knots and top speed of 13 knots. Four tow points, six Frazer Type Sub-Arrays and two ODIUM Type Streamer Reels with approx. 6k capacity. Helicopter Deck Rating for Bell 212 or similar to 5.3 tonnes. Accommodation for 39 persons (plus hospital) in nine single berths cabins and fifteen double berth cabins.

Dimensions

Length Overall: 67.36m (221ft)
Length Between Perpendiculars: 63.3m (207 Ft.)
Breadth Moulded: 14.02m (46 Ft.)
Breadth Extreme: 18.28m (59.97 Ft.) (W/Helideck Overhang)
Depth Moulded: 5.79m (18.99 Ft.)
Draft: 5.52m (18.11 Ft.) (Max)
Draft: 5.01m (16.44 Ft.) (Mean)
Air Draft: 28.29m (To Highest Antenna)
GRT: 2526

NRT: 757

LDT: 2199.20 Tonnes.

Classification: Lloyds +100 A1 Ice Class 1

GMDSS Sea Areas: A1+A2+A3

Safe Manning Certificate (Min.) 10 Maritime Crewmembers (Galley Dept. not included)

Year Built: 1985 Allied Shipbuilders Ltd., Vancouver, Canada

Year Converted/Modified: May 1997 - Tyne Tees Ship Yard, Newcastle, UK

Year Converted/Modified: June 2001 - Newpark Shipbuilding, Galveston, TX, USA

Machinery

Main Engines Two (2) B&W Alpha Diesel, 12v 28/32 – V0, 3600 Hp Each

Auxiliary Engine One (1) 536kw Cat, Type 3412

Auxiliary Engine One (1) 430 Kw Cat, Type 3412

Auxiliary Engine One (1) 480kw Cat. Type 3412

Main Propulsion B&W Alpha 4 Bladed Pitch Prop. 10 Ft. 02 In. Dia.

Bow Thruster: Ulstein Model 150 TV– A (Avec 100-LH4) 490 Kw/670 Hp

Stern Thruster: Ulstein Model 90 TV–A 184 Kw/250 Hp

Steering Gear: Wagner Electro Hydraulic 2- CAZ 7.0-45-C-EB 2

Generators: Marathone ELTR, Leroy Somer LSA54

Emergency Generator: Lombardini 4 LD 820/L

Capacities

Fuel Oil: 841m³ (222,169 Gals)

Ballast: 761m³ (201,035 Gals)

Fresh Water: 85m³ (22,454.6 Gals)

Waste Oil/Bilge Oil 12m³ (3,170.06 Gals)

Speed: Transit in calm sea, 13kts.

Speed, Transit economy 11kts.

Fuel Consumption: Full Speed 25.2 M3 / 24 Hrs.

Fuel Consumption: Economy Speed 15 M3 / 24 Hrs.

Fuel Consumption In Port: 0.95 M3 / 24 Hrs.

Operational Endurance: 31 Days Max Speed, 50 Days Economy Speed

Fuel Endurance During Survey: 61 Days

Towing And Anchor Handling (Deck Equipment)

Winches: Two (2) X Harrison & Robbins Hydraulic Capstan Mooring Winch

Tow Pins 16 K Solid Cables/4 Tow Points

Special Features

Air Source, HP Compressors: 2 x LMF 31/138-D 1 X LMF 240 HD.

Air Capacity, Each & Total (CFM): 2 X 1100 CFM + 1 X 800 CFM Total 3000 CFM

HP Compressor Drive Motors: 2x CAT 3508, 1x MAN. D2842 LE.

Sub-Arrays: 6x Frazer Type

Streamer Reels: 2x ODIUM Type, Approx. 6k Capacity

Pulling Capacity: (not tested) 40 tons approx. @ 5 knots

Deck Crane ABAS KDE 60-5t (3.5t Offshore)

Power Out From M.S. Board: 1490 kW. Total

UPS Power To Instrument Room: Merlin Gerin Comet S 33

Power Supply Instr. Room Back Up: Merlin Gerin Comet S 33

Helicopter Deck Diameter: 18m (D-Value)

Helicopter Deck Rating: Bell 212 or similar to 5.3 Tonnes

Helicopter Deck Markings: Standard at present and according to US regulations

Fresh Water Generator: Alfa Laval Desalt + Osmosis. 15m³/Day

Incinerator, Sludge & Waste Oil: Teamtec, Type OQ 120c

Bilge/Oily Water Separator: 2 X Ultra Sep 1000

Oily Water/Sludge Holding Tanks Cap 1 Tank 12 M³

Sewage Disposal Plant: Orca li-A-24

Anti-Roll Tanks

Life Saving/Emergency Equipment

Life Rafts Four (4) X 25-Man Viking Lift Rafts

Life Rafts Two (2) X 6-Man Viking Lift Rafts

Man Overboard Boat: Type MP-741 Springer with 300hp Cummins/Hamilton Waterjet, 33 knots

Engine Room: Co₂

Compressor Room Co₂

Incinerator Room: Co₂

Galley Range Hood: Co₂

Helicopter Deck: 2 X Fixed Installed AFFF Foam Monitors

Paint Store: Co₂

Chemical Store Box On Deck. 2.97 X 1.27 X 1.0 Meters

Main Foam Pump, AFFF Foam Mixture Grunfoss Type Crn4-120 A-P-G-Auue

Main Fire Pump Iron A/S QVP 2 – 400/3

Emergency Fire Pump Paramount Mod 1 ½ Sb (LHO)

Fire Detection Monitoring Pump Cerberus Pyrotronics System 3, Mod CP-35

Other Gear As Required By Authorities.

Electronics

Radar No.1 Furuno FR 2127BB

Radar No.2: Furuno FR 2127BB

Gyro Compass No. 1: Sperry Mk 37 Mod. E

Gyro Compass No. 2: Anschutz STD 20

Auto Pilot: Robertson AP9 Mk 3

GPS Receiver: Furuno Falcom 15

Speed Log: JRC JLN-203 Dopler Log

Echo Sounder: Furuno FE 700

VHF GMDSS* Radio: Type 1 Furuno FM 8800

VHF, GMDSS* Radio: Type 2 Furuno FM 8800

VHF, GMDSS* Radio: Type 3 Furuno Falcom 15

UHF: Motorola

Weather Facsimile: Furuno Fax 207

Navtex Receiver: JRC/NRC 330

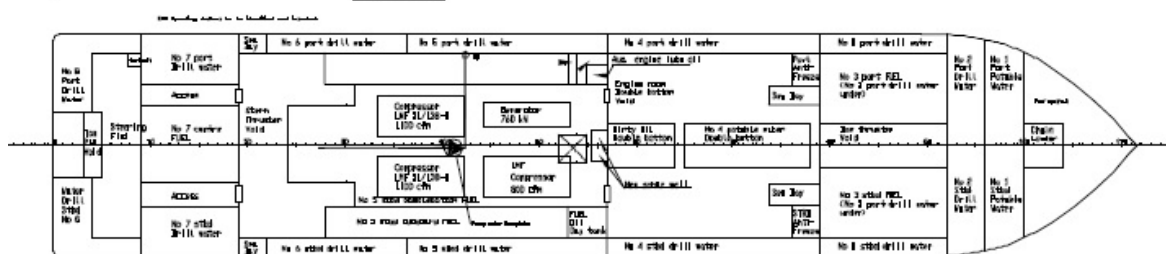
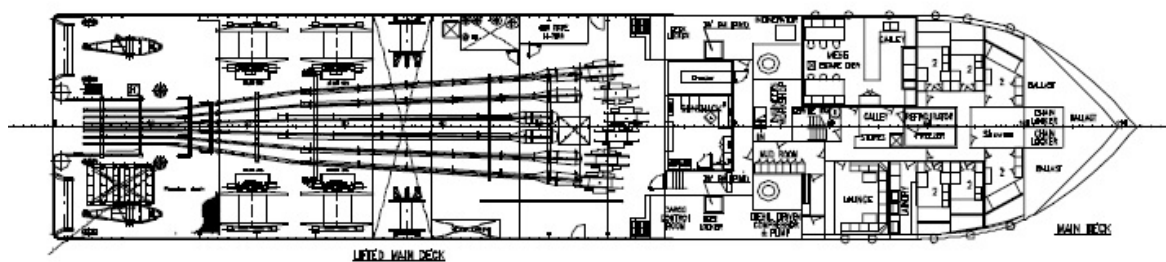
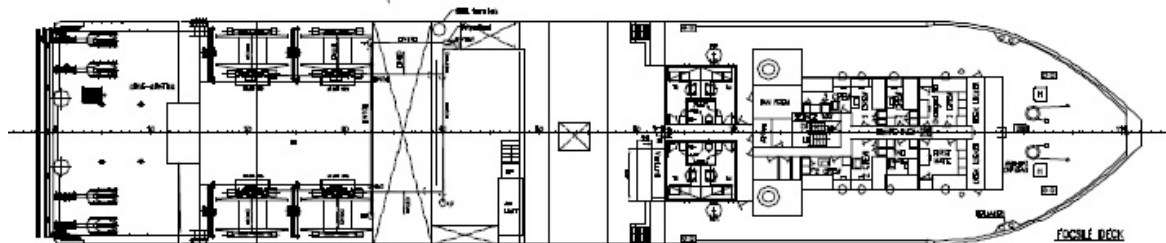
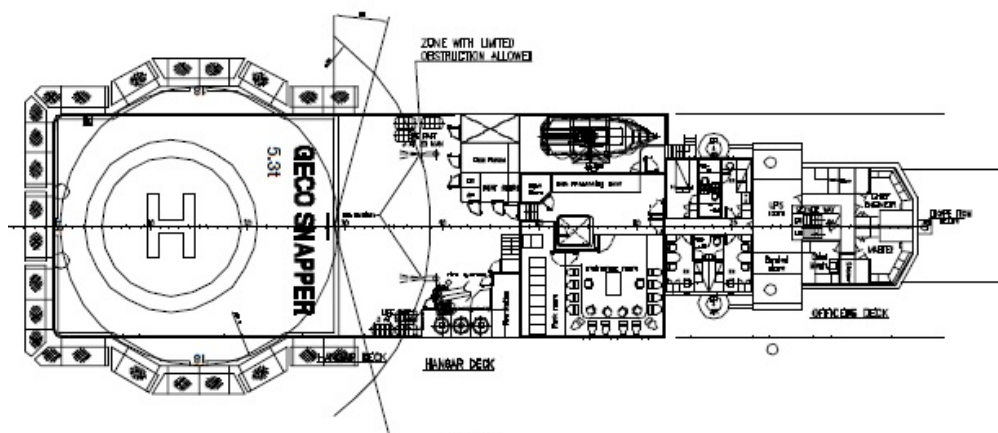
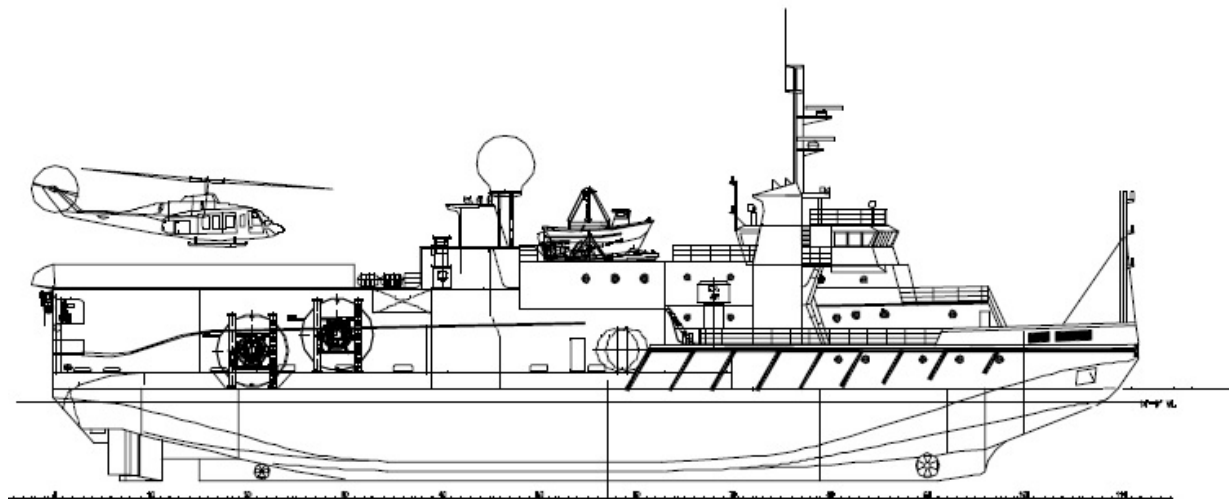
UPS, Power Supply To All GMDSS Radios: Lamarche Constavolt, UPS Merlin Gerin Comet S33

Accommodations

Accommodations 39 persons (Plus Hospital)

Single Berths Cabins 9

Double Berths Cabins 15







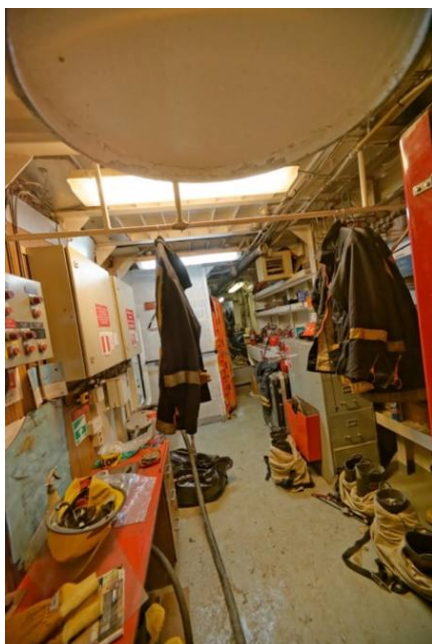
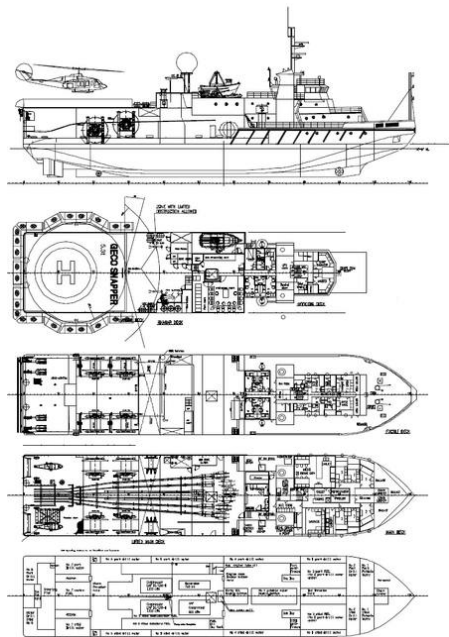


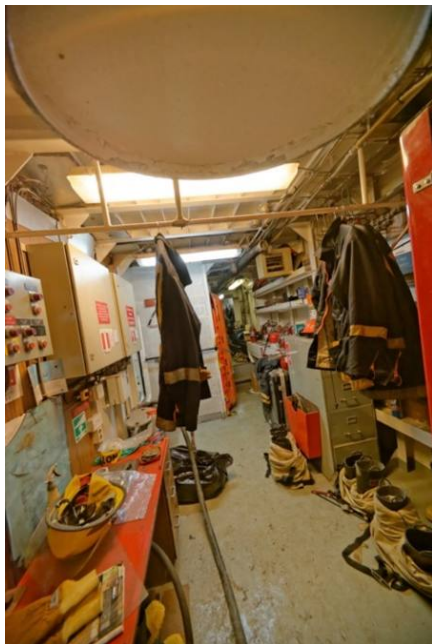








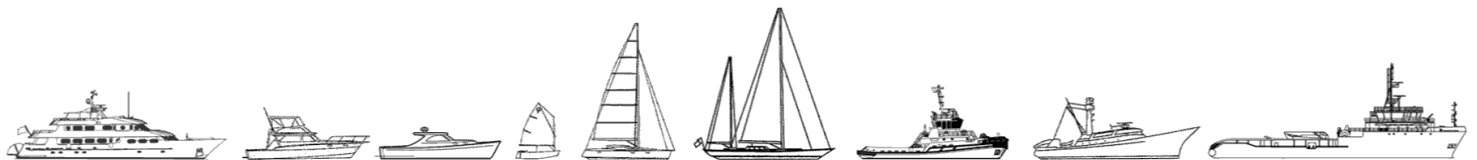








The details of all vessels are offered in good faith but we cannot guarantee or warrant the accuracy of this information nor warrant the condition of the vessel. Any buyer should instruct their agents, or their surveyors, to investigate such details as the buyer desires validated. This vessel is offered subject to sale, price change, location or withdrawal without notice.



AUSTRALIA - BULGARIA - INDIA - INDONESIA - ITALY - MALAYSIA - NEW ZEALAND - PANAMA - PHILIPPINES - SINGAPORE - SPAIN - UK - USA - VENEZUELA - VIETNAM