



# SEABOATS

MARINE BROKERS WITH A GLOBAL APPROACH

AUSTRALIA - BULGARIA - INDIA - INDONESIA - ITALY - MALAYSIA - NEW ZEALAND - PANAMA - PHILIPPINES - SINGAPORE - SPAIN - UK - USA - VENEZUELA - VIETNAM

[sales@seaboats.net](mailto:sales@seaboats.net) - [www.seaboats.net](http://www.seaboats.net)

## 260ft Offshore Supply Vessel



### Listing ID - 2138

**Description** 260ft Offshore Supply Vessel

**Date** 1997

**Launched**

**Length** 79.25m (260ft)

**Beam** 17m (56ft)

**Draft** 5.72m (18ft 9in)

**Broker** John Kearns  
[john.kearns@seaboatsbrokers.com](mailto:john.kearns@seaboatsbrokers.com)  
+64 21 400 805

### REGISTRATION

Hull: 159

Vessel Type: Offshore Supply Vessel

Year Built: 1997

Shipyard: North American Shipbuilding

### DIMENSIONS

Dimensions: 260' x 56' x 18.9' (79.25mx17mx5.72m)

Draft (Lightship): 6'6" (1.98 m)

Draft (Loadline): 15.24' (4.65 m)

Clear Deck: 185.5' x 46.5' (56.54 m x 14.17 m)

Clear Deck: 8,625 sq. ft. (801.17 m<sup>2</sup>)

Deck Cargo Capacity: 1,905 LT @ 3' VCG (1,935.57 MT @ 3' VCG)

Deadweight Tonnage: 2,917 LT (2,963.81 MT)

### CAPACITIES

Fuel Oil: 204,034 gals. (204,034 gals.)  
Ballast: 384,961 gals. (1,457.24 m<sup>3</sup>)  
Potable Water: 36,678 gals. (138.84 m<sup>3</sup>)  
Dry Bulk: 9,480 cu. ft. @ 70 psi (272.77 m<sup>3</sup> @ 70 psi)  
Liquid Mud: 8,132 barrels (1,292.88 m<sup>3</sup>)  
Methanol: 2,110 barrels (333.5 m<sup>3</sup>)

### **MACHINERY**

Main Engines: Two (2) 3516 CAT  
Bow Thrusters: One (1) 1,000 HP CP Tunnel  
Bow Thrusters: One (1) 1,200 HP Drop Down  
Speed: 12 knots  
Generators: Three (3) x 300 kW, One (1) x 105 kW  
Generators: Two (2) Ulstein 1350 HD Azimuthing

### **SPECIAL FEATURES**

Tuggers: Two (2) x 10 tons  
Positioning: Marine Tech DP-2

### **LIFE SAVING EQUIPMENT**

Life Rafts: Four (4) x 25-Man Inflatable Life Rafts  
Life Rafts: One (1) x 10-Man Inflatable Life Rafts  
Rescue Boat/Craft: 1 x SOLAS Rescue Boat  
Other gear as required by authorities

### **ELECTRONICS**

Electronics Package: Furuno GP-36 DGPS Navigator, (2) Furuno FF-1510 Marine Radars, Furuno FCV-600L Depth Sounder, (2) Sea 7156 VHF Radios, Sea 330 HF/SSB Radio, Seacall MF/HF Controller, JRC NCR-300A Navtex, Sailor 2182 KHZ Watchkeeper, Necode DSC 1000, JRC NDZ-127C Data Terminal, JRC JUE 75C Inmarsat, Furuno PP-510 Inmarsat Printer, (2) Marine Tech DP-2, (2) SG Brown Gyrocompasses, (2) MCP 1000R EME Minuteman UPS, Furuno FA-150 AIS, (2) CNAV 3050 DGPS

### **CLASSIFICATION**

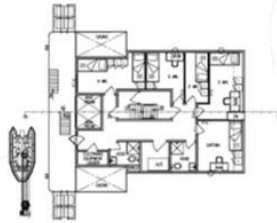
ABS: Maltese Cross A1 (Hull)  
ABS: Maltese Cross AMS (Machinery)  
ABS: Loadline (Unrestricted Ocean Service)  
ABS: Circle E (Equipment)  
ABS: DPS 2  
USCG: Subchapter L (OSV) and I (Cargo)  
SOLAS: 1974

### **ACCOMMODATIONS**

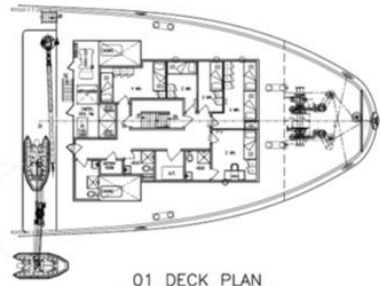
Accommodations: 31



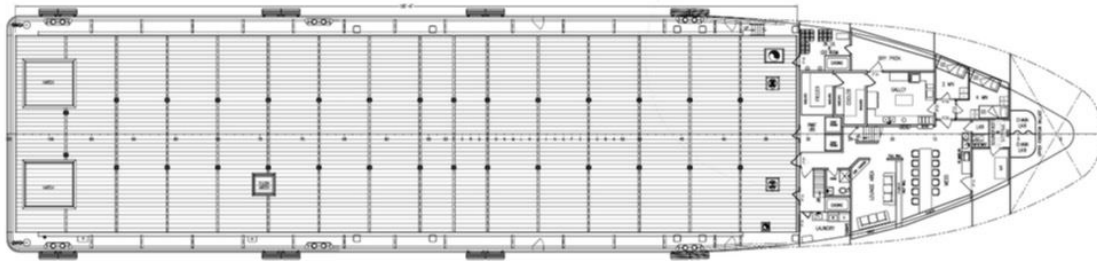
03 DECK PLAN  
3/32 = 1'-0"



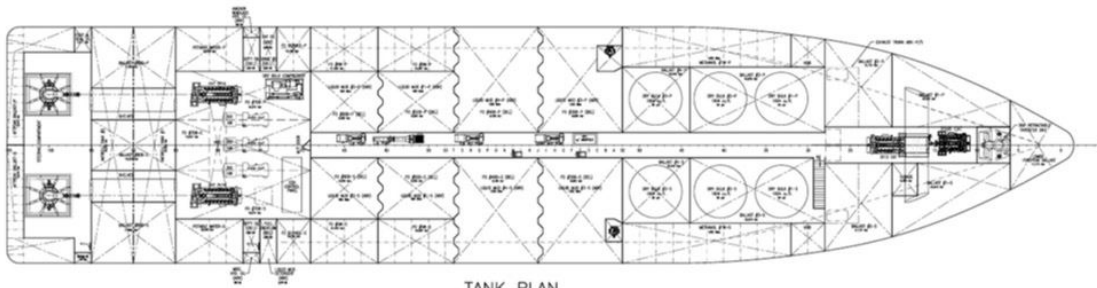
02 DECK PLAN  
3/32 = 1'-0"



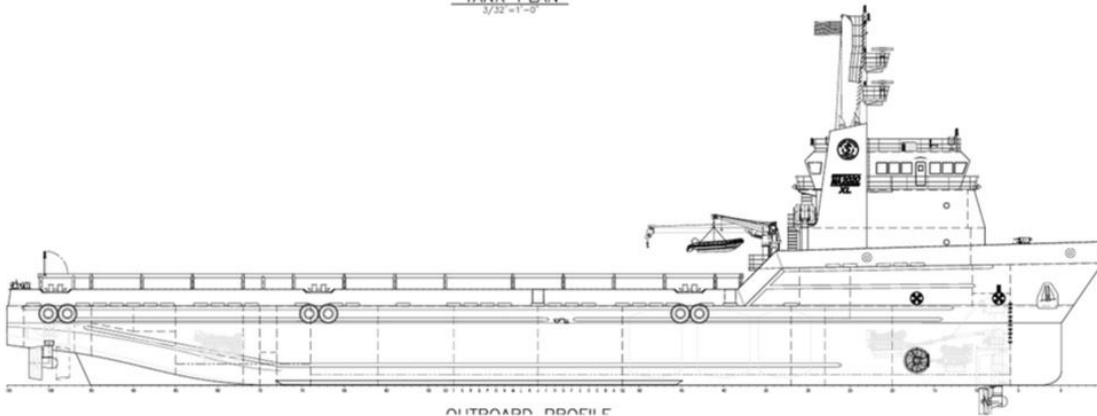
01 DECK PLAN  
3/32 = 1'-0"



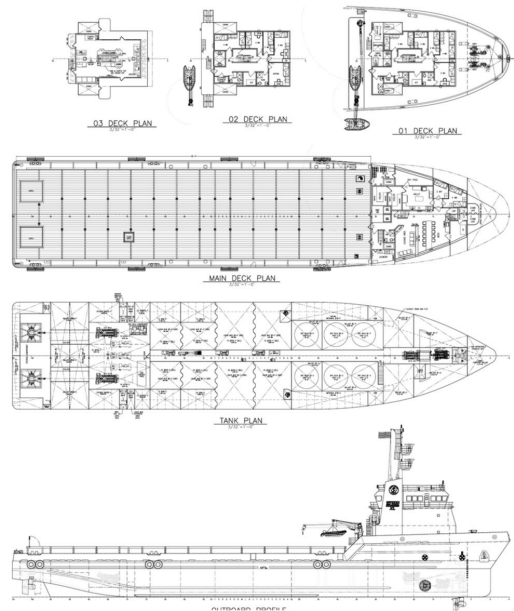
MAIN DECK PLAN  
3/32 = 1'-0"



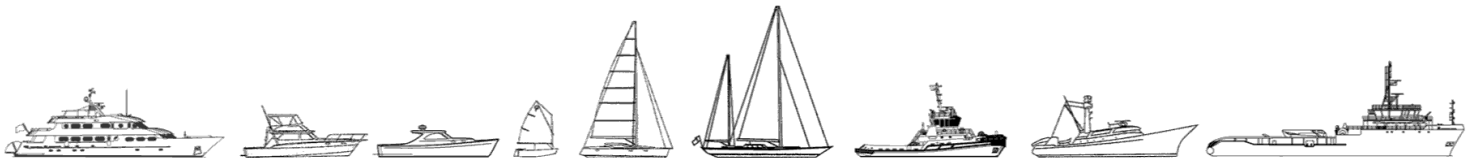
TANK PLAN  
3/32 = 1'-0"



OUTBOARD PROFILE



The details of all vessels are offered in good faith but we cannot guarantee or warrant the accuracy of this information nor warrant the condition of the vessel. Any buyer should instruct their agents, or their surveyors, to investigate such details as the buyer desires validated. This vessel is offered subject to sale, price change, location or withdrawal without notice.



AUSTRALIA - BULGARIA - INDIA - INDONESIA - ITALY - MALAYSIA - NEW ZEALAND - PANAMA - PHILIPPINES - SINGAPORE - SPAIN - UK - USA - VENEZUELA - VIETNAM