



SEABOATS

MARINE BROKERS WITH A GLOBAL APPROACH

AUSTRALIA - BULGARIA - INDIA - INDONESIA - ITALY - MALAYSIA - NEW ZEALAND - PANAMA - PHILIPPINES - SINGAPORE - SPAIN - UK - USA - VENEZUELA - VIETNAM

sales@seaboats.net - www.seaboats.net

240ft Well Stimulation Vessel



Listing ID - 2152

Description 240ft Well Stimulation Vessel

Length 73.15m (240 ft)

Beam 17.07m (56 ft)

Draft 6.40m (21 ft)

Broker John Kearns
john.kearns@seaboatsbrokers.com
+64 21 400 805

REGISTRATION

Hull : 178

Vessel Type: Well Stimulation

DIMENSIONS

Dimensions: 240 ft. x 56 ft. x 21 ft. (73.15 m x 17.07 m x 6.40 m)

Draft (Lightship): 6 ft. 6 in. (1.98 m)

Draft (Loadline): 18 ft. (5.49 m)

Freeboard (Loadline): 3 ft. (0.91 m)

Freeboard (Lightship): 14 ft. 6 in. (4.42 m)

Displacement (Lightship): 1,625 LT (1651.08 MT) approximate

Deadweight (Loadline Draft): 3,000 LT (3048.141 MT) approximate

CAPACITIES

Fuel Oil: 208,374 gal. (788.78 cu. m)

Fuel Oil Overflow: 2,353 gal. (8.91 cu. m)

Ballast: 358,051 gal. (1355.37 cu. m)
Potable Water: 24,030 gal. (90.96 cu. m)
Wash Water: 6,922 gal. (26.20 cu. m)
Dry Bulk: 8,000 cu. ft. (226.5 cu. m) @ 80 psig
Liquid Mud: 254,646 gallons (963.94 cu. m)
Dirty Oil: 2,353 gal. (8.91 cu. m)
Anti-Roll Tanks: 58,341 gal. (220.84 cu. m)
Service Tanks: 5 Tanks total: 7,990 gals. (30.25 cu. m)
Sewage: 6,922 gal. (26.20 cu. m)

MACHINERY

Main Engines: 2 x 3516 Caterpillar Diesels 1,600 BHP @ 1600 rpm each
Azimuth Thrusters: 2 x 1350H Ulstein 315 rpm, 80 in. diameter, 4 Blade FPP
Thrusters: 1 x 340 hp CP Tunnel Thruster (3406 CAT)
Thrusters: 1 x 1200 hp Drop Down - Ulstein 900 HRV (3512 CAT)
Speed: 12.2 knots
Emergency Generators: 1 x 170 kw (3306 Cot)
Ship's Service Generators: 2 x 500 kw (3412 Cats)

SPECIAL FEATURES

Ship Motion: 2 x Passive Type Anti-Roll Tanks
Bilge Keel

LIFE SAVING EQUIPMENT

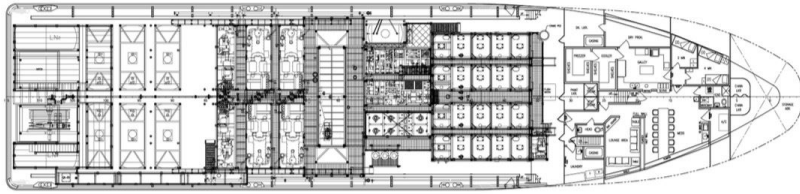
Life Rafts: 4 x 20 MAN Inflatable Life Rafts
Rescue Platform
Other gear as required by authorities

CLASSIFICATION

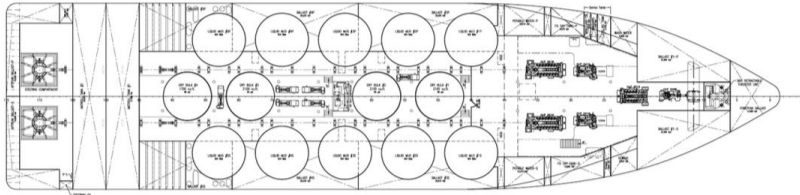
ABS: Maltese Cross A1
ABS: Load Line
ABS: Maltese Cross AMS (Machinery)
ABS: DPS-2
USCG: Subchapter L (O.S.V.)
USCG: Manned Engine Room
USCG: Oil Recovery Vessel Authorization (20% DWT)
SOLAS: 1997
MARPOL: 1973/1978/1992

ACCOMMODATIONS

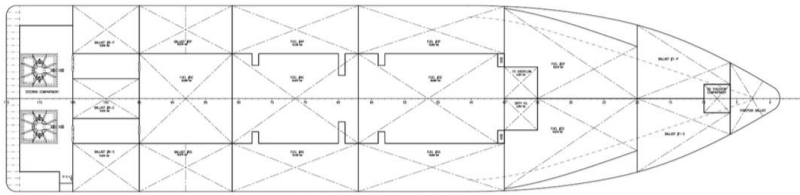
Accommodations: 29



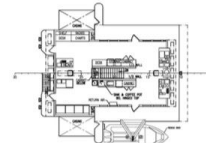
MAIN DECK PLAN
3/32 = 1"=0'



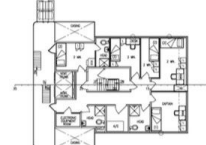
ABOVE TANK TOP PLAN
3/32 = 1"=0'



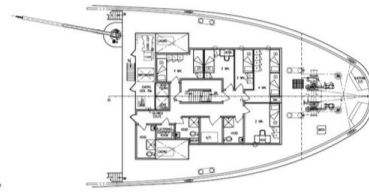
BELOW TANK TOP PLAN
3/32 = 1"=0'



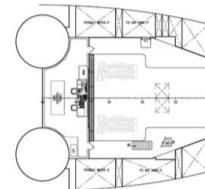
03 DECK PLAN
3/32 = 1"=0'



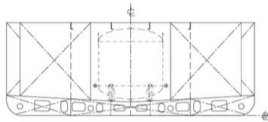
02 DECK PLAN
3/32 = 1"=0'



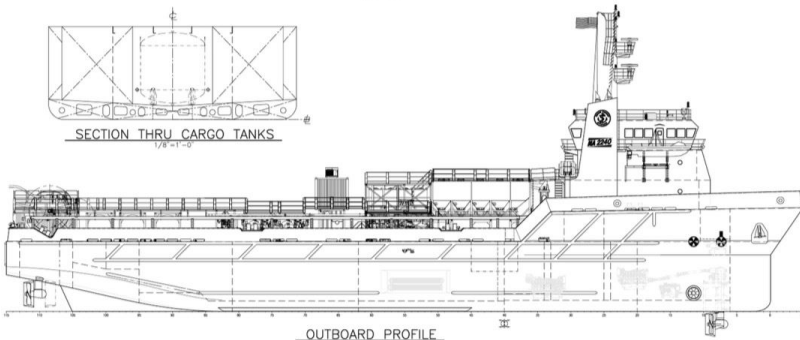
01 DECK PLAN
3/32 = 1"=0'



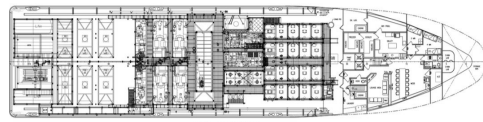
CONTROL ROOM PLAN
3/32 = 1"=0'



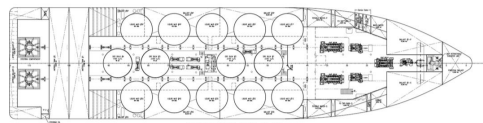
SECTION THRU CARGO TANKS
1/8 = 1"=0'



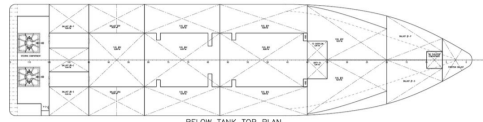
OUTBOARD PROFILE
3/32 = 1"=0'



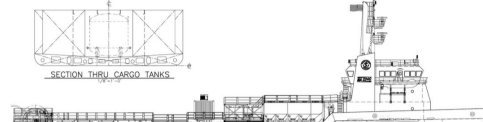
MAIN DECK PLAN
3/32 = 1"=0'



ABOVE TANK TOP PLAN
3/32 = 1"=0'



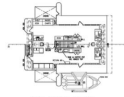
BELOW TANK TOP PLAN
3/32 = 1"=0'



SECTION THRU CARGO TANKS
1/8 = 1"=0'



OUTBOARD PROFILE
3/32 = 1"=0'



03 DECK PLAN
3/32 = 1"=0'



02 DECK PLAN
3/32 = 1"=0'



01 DECK PLAN
3/32 = 1"=0'

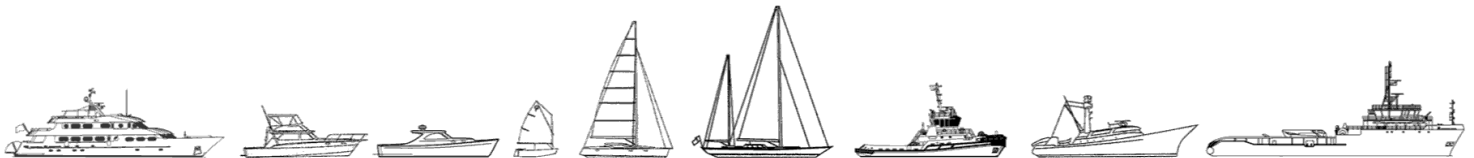


CONTROL ROOM PLAN
3/32 = 1"=0'





The details of all vessels are offered in good faith but we cannot guarantee or warrant the accuracy of this information nor warrant the condition of the vessel. Any buyer should instruct their agents, or their surveyors, to investigate such details as the buyer desires validated. This vessel is offered subject to sale, price change, location or withdrawal without notice.



AUSTRALIA - BULGARIA - INDIA - INDONESIA - ITALY - MALAYSIA - NEW ZEALAND - PANAMA - PHILIPPINES - SINGAPORE - SPAIN - UK - USA - VENEZUELA - VIETNAM