



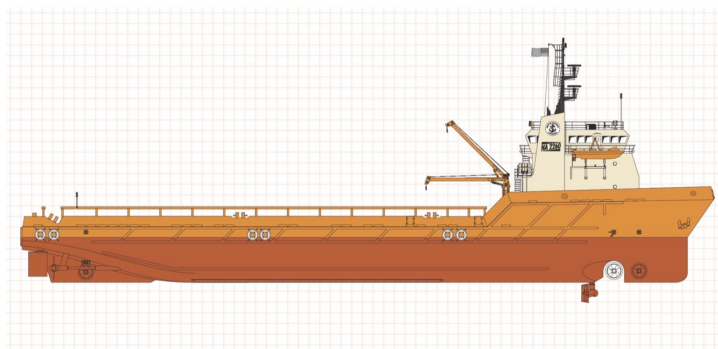
# SEABOATS

MARINE BROKERS WITH A GLOBAL APPROACH

AUSTRALIA - BULGARIA - INDIA - INDONESIA - ITALY - MALAYSIA - NEW ZEALAND - PANAMA - PHILIPPINES - SINGAPORE - SPAIN - UK - USA - VENEZUELA - VIETNAM

[sales@seaboats.net](mailto:sales@seaboats.net) - [www.seaboats.net](http://www.seaboats.net)

## 260ft Offshore Supply Vessel, built 2002



### Listing ID - 2157

**Description** 260ft Offshore Supply Vessel

**Date** 2002

**Launched**

**Length** 79.25m (260ft)

**Beam** 17.07m (56ft)

**Broker** John Kearns  
[john.kearns@seaboatsbrokers.com](mailto:john.kearns@seaboatsbrokers.com)  
+64 21 400 805

### REGISTRATION

Hull: 217

Vessel Type: Offshore Supply Vessel

Year Built: 2002

Shipyard: North American Fabricators

### DIMENSIONS

Dimensions: 260 ft. X 56 ft. X 21 ft. (79.25 m X 17.07 m X 6.40 m)

Draft (Lightship): 6 ft. 6 in. (1.98 m)

Draft (Loadline): 18 ft. (5.49 m)

Freeboard (Loadline): 3 ft. (0.91 m)

Freeboard (Lightship): 14 ft. 6 in. (4.42 m)

Clear Deck: 185 ft. x 46 ft. 6 in. (56.39 m x 14.17 m)

Cargo Deck Area: 8,602.5 sq. ft. (799.2 sq. m)

Deadweight Tonnage: 3,450 LT (3,505.36 MT)

### CAPACITIES

Fuel Oil: 263,521 gals. (997.54 cu. m)

Ballast: 204,841 gals. (775.41 cu. m)  
Potable Water: 24,014 gals. (90.90 cu. m)  
Dry Bulk: 10,500 cu. ft. @ 80 psi (297.33 cu. m @ 5.5 bars)  
Liquid Mud: 10,509 barrels (1670.8 cu. m)

### **MACHINERY**

Main Engines: Two (2) CAT 3606  
Total Propulsion HP: 5,400 HP  
Bow Thrusters: One (1) 1,200 HP Swing Up  
Bow Thrusters: One (1) 1,000 HP Tunnel  
Stern Thrusters: One (1) 1,000 HP Tunnel  
Speed: 14.2 knots  
Generators: Two (2) x 910 kW  
Generators: One (1) x 170 kW emergency

### **SPECIAL FEATURES**

Tuggers: Two (2) x 4 Tons  
Ship Motion: Two (2) Passive Type Anti-Roll Tanks  
Ship Motion: Bilge Keels  
Positioning: DP 2  
Deck Crane: One (1) x 3,100 lbs. capacity

### **LIFE SAVING EQUIPMENT**

Life Rafts: Four (4) x 25-Man Inflatable Life Rafts  
Life Rafts: Two (2) x 10-Man Inflatable Lift Rafts  
Rescue Boat/Craft: One (1) x Norsafe 6-Man Rescue Boat  
Other gear as required by authorities

### **ELECTRONICS**

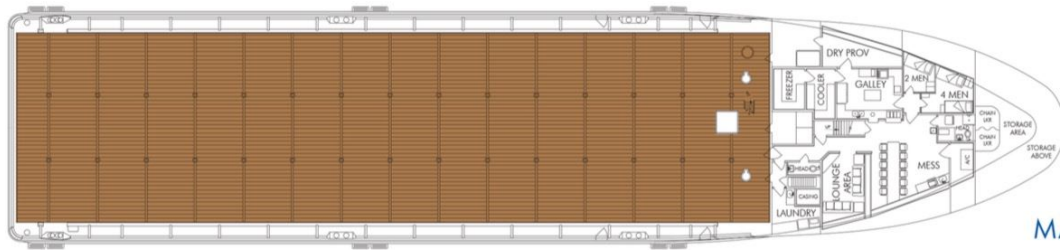
Electronics Package: Two (2) Pelco Video Cameras, Two (2) Furuno PP-510 Printers, Inmarsat-C Furuno Felcom 18, DSC Watch Receiver Furuno DSC-60, Furuno SSB (Single Sideband Radio), Kongsberg Simrad SDP-21 DP System, EPIRB RLB-32 ACR Electronics, Two (2) Furuno VHF FM 8900S, Navtex Receiver Furuno NX-300, Two (2) Furuno FR-2115-B (ARPA Capable) Radar, Two (2) Gyro Compasses, VSAT System, CyScan, Two (2) MRU, Two (2) Wind Trackers

### **CLASSIFICATION**

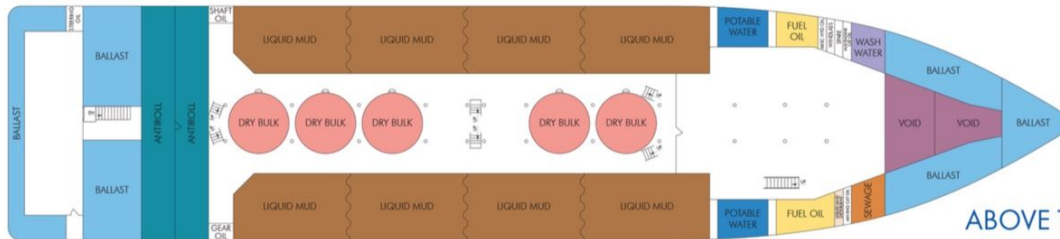
ABS: Maltese Cross A1 (Hull)  
ABS: Maltese Cross AMS (Machinery)  
ABS: Loadline  
ABS: DP 2  
USCG: Subchapter L (OSV)  
SOLAS  
MARPOL

### **ACCOMMODATIONS**

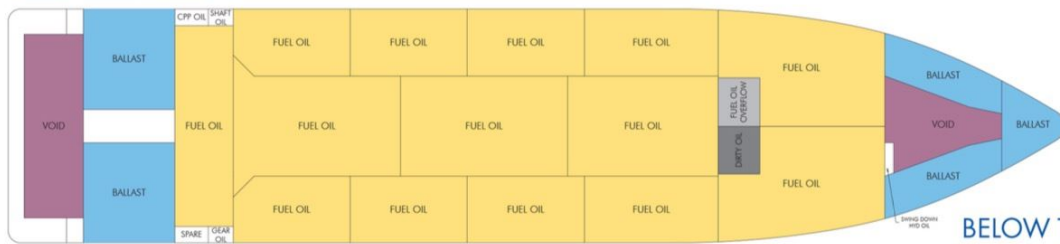
Accommodations: 29



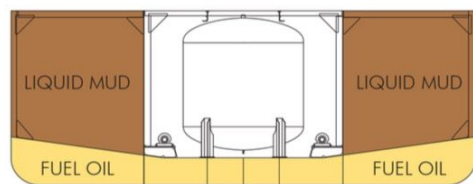
MAIN DECK



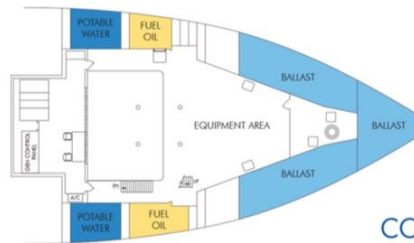
ABOVE TANK TOP



BELOW TANK TOP



CROSS SECTION



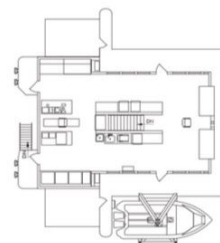
CONTROL ROOM



DECK 01

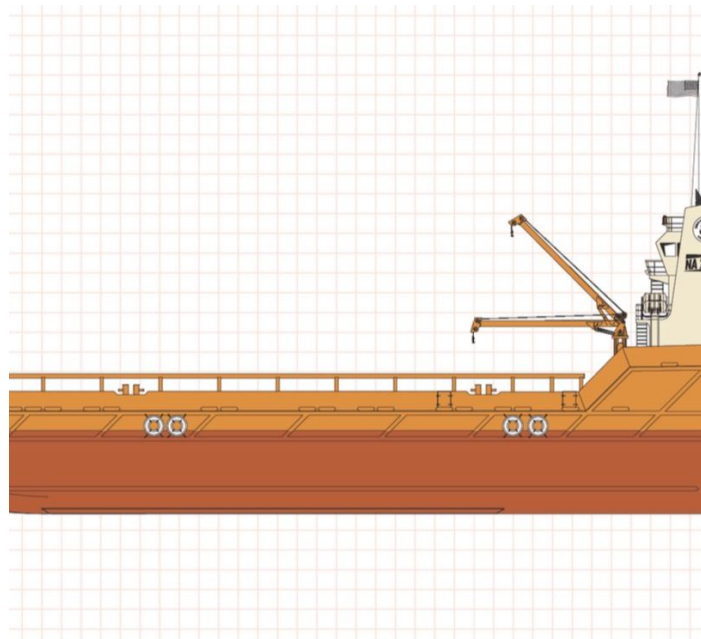
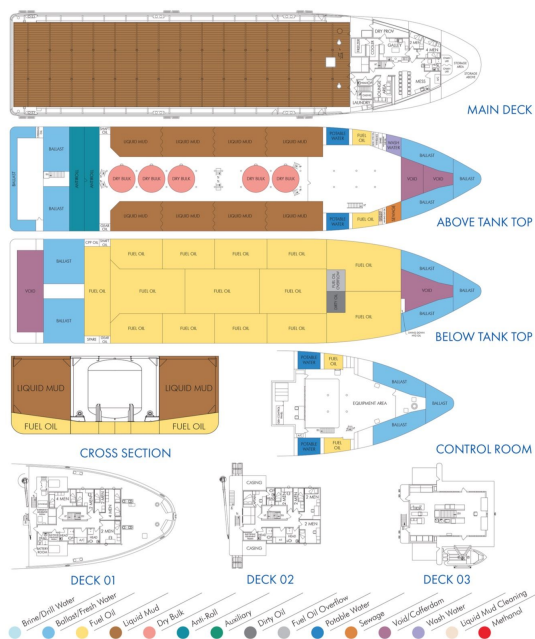


DECK 02

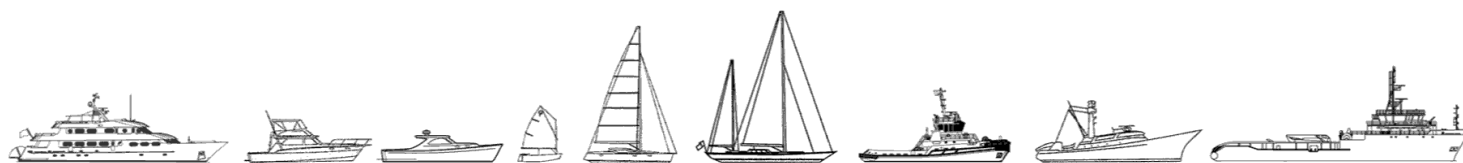


DECK 03





The details of all vessels are offered in good faith but we cannot guarantee or warrant the accuracy of this information nor warrant the condition of the vessel. Any buyer should instruct their agents, or their surveyors, to investigate such details as the buyer desires validated. This vessel is offered subject to sale, price change, location or withdrawal without notice.



AUSTRALIA - BULGARIA - INDIA - INDONESIA - ITALY - MALAYSIA - NEW ZEALAND - PANAMA - PHILIPPINES - SINGAPORE - SPAIN - UK - USA - VENEZUELA - VIETNAM