



SEABOATS

MARINE BROKERS WITH A GLOBAL APPROACH

AUSTRALIA - BULGARIA - INDIA - INDONESIA - ITALY - MALAYSIA - NEW ZEALAND - PANAMA - PHILIPPINES - SINGAPORE - SPAIN - UK - USA - VENEZUELA - VIETNAM

sales@seaboats.net - www.seaboats.net

SOLD - 9.2m Alloy Cray Boat



Listing ID - 2204

Description 9.2m Alloy Cray Boat For Sale by Tender

Date 1979

Launched

Length 9.20m (30ft 2in)

Beam 2.84m (9ft 3in)

Draft 0.75m (2ft 5in)

Broker Geoff Fraser or John Kearns

Price SOLD

We offer the FV Nimrod 1 for sale by Public Tender on instructions from The Ministry for Primary Industries, New Zealand.

The seller retains the right to sell the vessel prior to the close of tenders. Tenders closing at 4 pm New Zealand Standard Time on 3 May 2018.

Designer / Builder: Ali Marine, Raglan, New Zealand

Year Launched: 1979

LOA: 9.2m

Beam: 2.84m

Draft: 0.75m

Call Sign: ZMV 8323

Flag: New Zealand

Home Port: Napier

MSA No.: 122531

Fishing No.: 70356

Service Speed: 20 knots

Main Engine: Volvo TAMD41

VESSEL DESCRIPTION

The Nimrod 1 is a planning 9.20m Cray Fishing Boat with single water-jet propulsion. She has a raised Pilothouse forward, two decks, comprising of a raised foredeck and the large open work deck aft. The vessel has a compact engine bay under the aft deck and overnight accommodation in the forepeak.

CONSTRUCTION

The vessel was built and designed by Ali Marine in Raglan, New Zealand to New Zealand Ministry of Transport survey and delivered in 1979. She is constructed of welded aluminium alloy construction on formed aluminium frames, stringers and fore and aft girders.

It appears that the vessel was lengthened by approximately 1.5m on the transom at some stage.

LAYOUT

Nimrod 1 is a purpose built commercial Cray Fishing Boat with a large working deck aft and the Pilothouse and accommodation forward. The aft deck is fitted with a pot hauler on the forward starboard side, adjacent is the Cray Fish tank. In the Pilothouse the Helm Station is located to starboard, with small galley to starboard and access forward to the forepeak with vee berth for two (2) crew.

MACHINERY AND ENGINEERING

The vessel is powered by a six (6) cylinder Volvo TAMD 41 marine diesel engine, which develops 149 kW at 3200 RPM. The engine is flexibly mounted and direct drives via an Cardan shaft to a Hamilton Jet 291 Marine Jet unit. The engine is fitted with a 12V alternator and a hydraulic pump which is driven off the front of the main engine.

TANK CAPACITIES

Diesel: 500 liters

Water: 100 liters

HELM STATION

The helm station is located in the Pilothouse to starboard. The Pilothouse is compact with reasonable all-round visibility. Engine instruments at the helm station include tachometer, engine temperature, engine oil pressure and amp meter. Audio alarms are also fitted.

Electronic equipment includes:

- 1 x Furuno 1623 LCD 16nm Marine Radar
- 1 x Uniden MC535 VHF Transceiver
- 1 x Furuno FCV-585 Colour Echo Sounder
- 1 x Morse Engine Controls
- 1 x Plastimo Magnetic Steering Compass
- 1 x JVC KD-R316 MP3 CD Receiver.

ELECTRONIC AND ELECTRICAL

Primary electrical power is 12volt DC. There are two battery banks which are charged from an alternator mounted on the front of the main engine.

The main electrical panel with fuses and isolating switches is found at the Helm Station and in the engine bay.

DOMESTIC EQUIPMENT

The galley area is in the Pilothouse to port and is compact laid out with a stainless-steel sink with storage bins underneath. Domestic galley equipment includes a 2-burner gas hob and cold pressure freshwater.

DECK EQUIPMENT

The vessel has a clear aft deck with an on-deck live Cray Tank.

A single derrick with hydraulic line hauler is fitted just aft of the Pilothouse to starboard for pot and line hauling. In the forward cabin was a 13kg Danforth anchor on a short length of 8mm chain & rope warp.

EMERGENCY EQUIPMENT

The vessel has been equipped and maintained with the safety equipment required for Maritime New Zealand and SSM survey.

Two Life rings and two Life Jackets and a McMurdo E5 Smartfind 406 MHz EPIRB are also provided.

SURVEY STATUS

The survey certificates found on board Nimrod 1 during my inspection had all expired.

Safe Ship Management certificate # 43915, expired on 14th August 2017.

She was surveyed as a fishing vessel for inshore waters and carries lifesaving appliances for two (2) persons.

SUMMARY

Nimrod 1 has been a hard-working commercial vessel and appears to be a capable fishing boat and has been laid up for what appears to be an extended period of time.

Since no one familiar with the vessel was available during the inspection and that the vessel was without power, along with the limited paperwork/information found on board, meant we were unable to verify whether equipment on board was operational or not and if there were areas of concern.

Tenders are to be submitted within the above time frame to SeaBoats NZ as detailed in the tender documents. The seller retains the right to sell the vessel prior to the close of tenders.

The vessel is lying on the hard in Napier, New Zealand. To receive an Invitation to Tender and arrange inspection please contact:

John Kearns or Geoff Fraser at SeaBoats New Zealand.

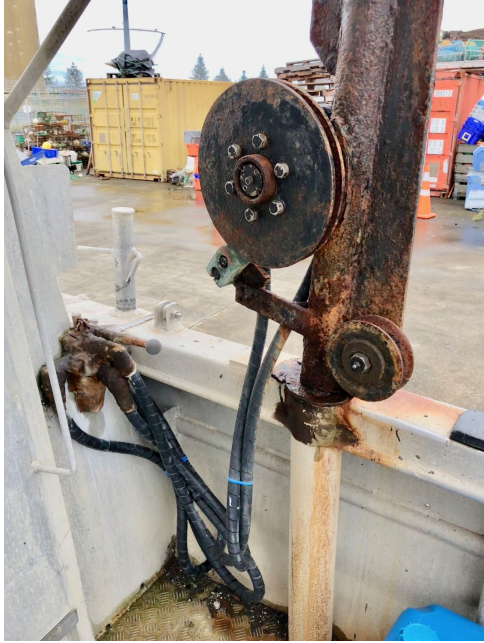
Ph: +64 (3) 337 6253, Fax: +64 (3) 337 6259

John: Mobile: +64 (21) 400 805 john.kearns@seaboatsbrokers.com

Geoff: Mobile: +64 (21) 61 222 5 geoff.fraser@seaboatsbrokers.com













The details of all vessels are offered in good faith but we cannot guarantee or warrant the accuracy of this information nor warrant the condition of the vessel. Any buyer should instruct their agents, or their surveyors, to investigate such details as the buyer desires validated. This vessel is offered subject to sale, price change, location or withdrawal without notice.

