



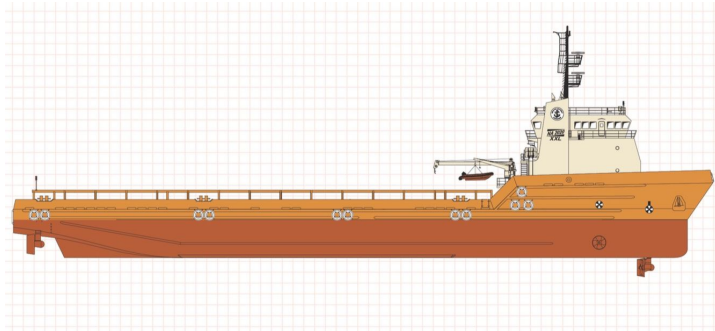
SEABOATS

MARINE BROKERS WITH A GLOBAL APPROACH

AUSTRALIA - BULGARIA - INDIA - INDONESIA - ITALY - MALAYSIA - NEW ZEALAND - PANAMA - PHILIPPINES - SINGAPORE - SPAIN - UK - USA - VENEZUELA - VIETNAM

sales@seaboats.net - www.seaboats.net

272ft Platform Supply Vessel



Listing ID - 2217

Description 272ft Platform Supply Vessel

Date Launched 1998, converted/modified 2010

Length 82.91m (272ft)

Beam 17.07m (56ft)

Location USA

Broker John Kearns
john.kearns@seaboatsbrokers.com
+64 21 400 805

REGISTRATION

Hull: 176

Vessel Type: Platform Supply Vessel

Year Built: 1998

Year Converted/Modified: 2010

DIMENSIONS

Dimensions: 272 ft. X 56 ft. X 18.9 ft. (82.91 m X 17.07 m X 5.72 m)

Draft (Lightship): 6 ft. 2 in. (1.88 m)

Draft (Loadline): 15 ft. 1 in. (4.59 m)

Clear Deck: 197 ft. 6 in. X 46 ft. 6 in. (60.2 m X 14.17 m)

Cargo Deck Area: 9,183 sq. ft. (853.20 sq. m)

Deck Strength: 540 lb/sq. ft. (2,636.5 kg/sq. m)

Deadweight Tonnage: 3,032 LT (3,080 MT)

CAPACITIES

Fuel Oil: 148,535 gals. (562.3 cu. m)
Ballast/Rig Water: 577,367 gals. (2,188.6 cu. m)
Potable Water: 36,696 gals. (138.91 cu. m)
Dry Bulk: 9,480 cu. ft. @ 80 psi (268.44 cu. m @ 5.5 bars)
Liquid Mud: 8,673 barrels (1,378.9 cu. m)
Service Tanks: 14,121 gals. (53.57 cu. m)

MACHINERY

Main Engines: Two (2) 3516 CAT Diesels, 3,420 BHP
Thrusters : One (1) 1,300 HP Tunnel
Thrusters: One (1) 1,200 HP Drop Down
Z-Drives: Two (2) 1350 HRV Ulstein
Speed: 14.2 knots
Generators : Three (3) x 300 kW
Generators: One (1) x 99 kW Emergency

SPECIAL FEATURES

Tuggers: Two (2) x 4 Tons
Ship Motion: Two (2) Passive Type Anti-Roll Tanks
Ship Motion: Bilge Keels
Positioning: DP 2

LIFE SAVING EQUIPMENT

Life Rafts : Four (4) x 20-Man Inflatable Life Rafts
Life Rafts: One (1) x 10-Man Inflatable Life Rafts
Rescue Boat/Craft: One (1) Narwhal SV-420H SOLAS Rescue Boat with davit
Other gear as required by authorities

ELECTRONICS

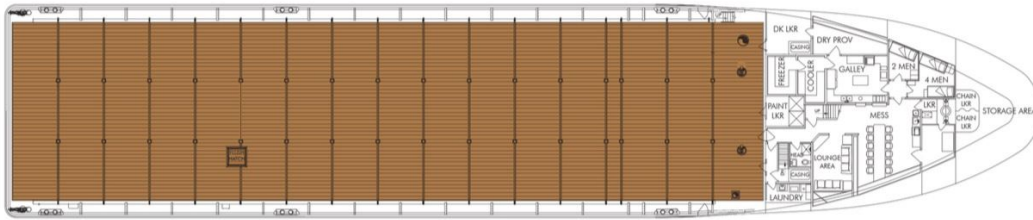
Electronics Package: Sailor R-501 2182KHZ Watchkeeper Receiver, Young Wind Tracker, NAVTEX NCR-300A Receiver, Seacall 7000 MF/HF DC Watch Receiver, JUE-75C, NDZ-127C Inmarsat Data Terminal, Seator 3000 GMDSS, Two (2) Furuno FR-1510 Mark-2 Radars, Furuno FCV-600L Depth Sounder, Two (2) Sea F7156 VHF/FM Radios, Raytheon NAV/398 GPS/Loran, Two (2) Seacall F100 VHF DSC Controllers, NECODE DSC 1000, Kongsberg Simrad STS-01 Autopilot, Marine Technologies Bridge Mate Dynamic Positioning System

CLASSIFICATION

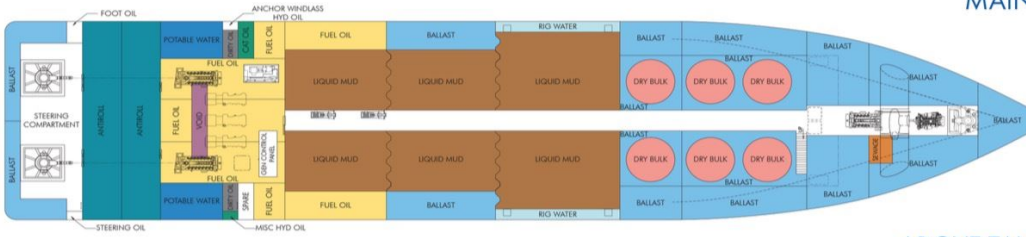
ABS: Maltese Cross A1 (Hull)
ABS: Maltese Cross AMS (Machinery)
ABS: Loadline
ABS: DP 2
USCG: Subchapter L (OSV)
SOLAS

ACCOMMODATION

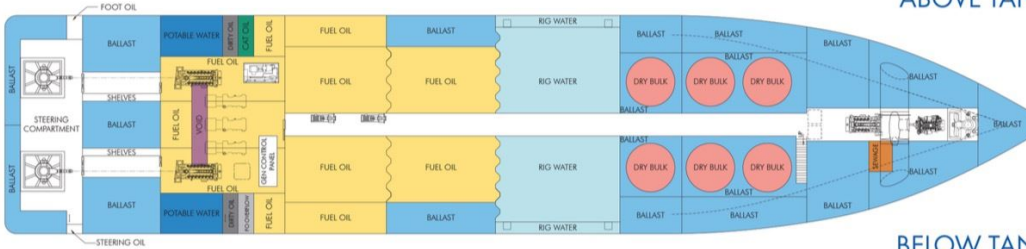
Accommodation: 27 (Including Hospital Room with One (1) Bed)



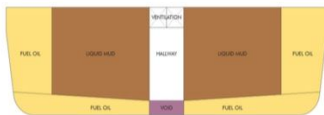
MAIN DECK



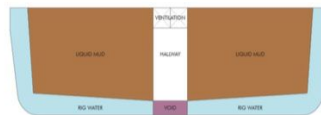
ABOVE TANK TOP



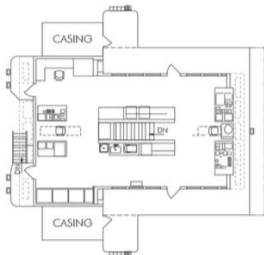
BELOW TANK TOP



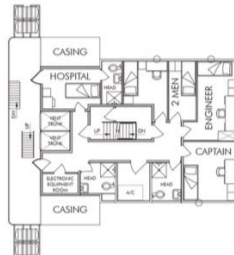
TANK CROSS SECTION



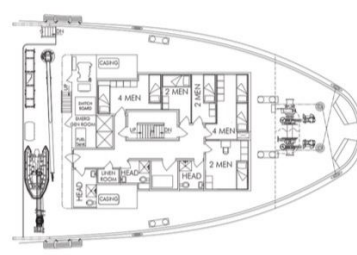
EXTENSION TANK CROSS SECTION



DECK 03

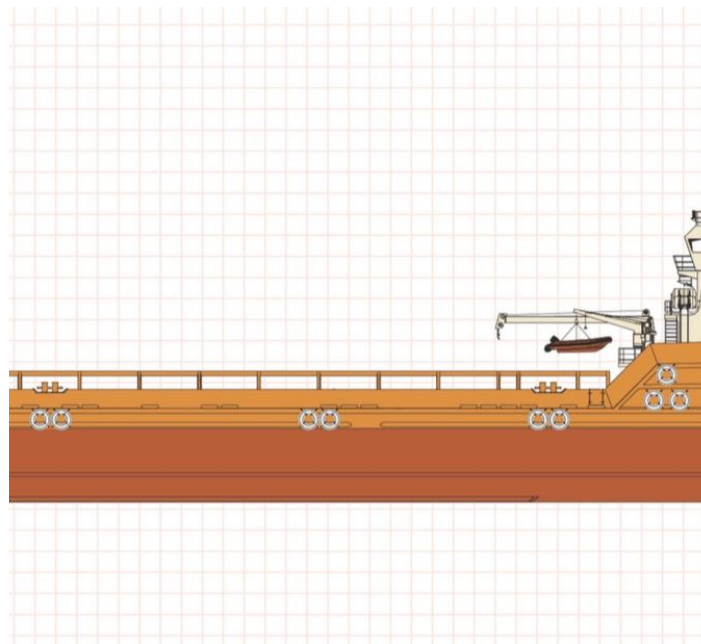
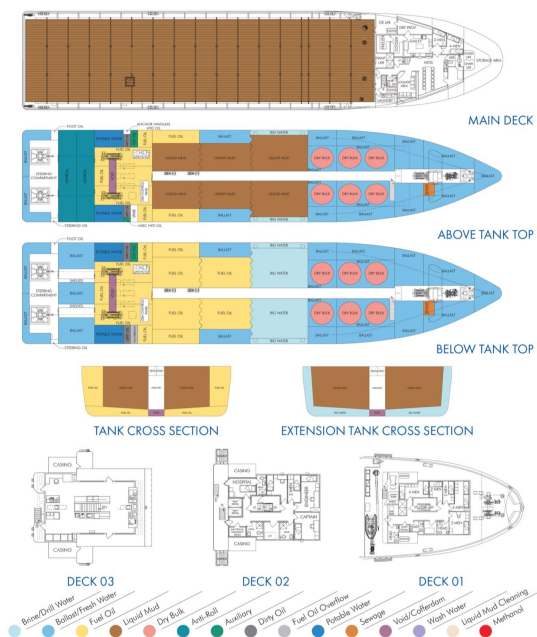


DECK 02

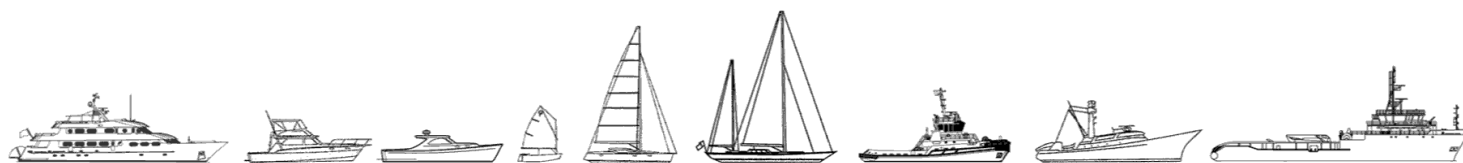


DECK 01

- Brine/Drill Water
- Ballast/Fresh Water
- Fuel Oil
- Liquid Mud
- Dry Bulk
- Anti-Roll
- Auxiliary
- Dirty Oil
- Fuel Oil Overflow
- Potable Water
- Sewage
- Void/Coferdam
- Wash Water
- Liquid Mud Cleaning
- Methanol



The details of all vessels are offered in good faith but we cannot guarantee or warrant the accuracy of this information nor warrant the condition of the vessel. Any buyer should instruct their agents, or their surveyors, to investigate such details as the buyer desires validated. This vessel is offered subject to sale, price change, location or withdrawal without notice.



AUSTRALIA - BULGARIA - INDIA - INDONESIA - ITALY - MALAYSIA - NEW ZEALAND - PANAMA - PHILIPPINES - SINGAPORE - SPAIN - UK - USA - VENEZUELA - VIETNAM