



SEABOATS

MARINE BROKERS WITH A GLOBAL APPROACH

AUSTRALIA - BULGARIA - INDIA - INDONESIA - ITALY - MALAYSIA - NEW ZEALAND - PANAMA - PHILIPPINES - SINGAPORE - SPAIN - UK - USA - VENEZUELA - VIETNAM

sales@seaboats.net - www.seaboats.net

32.17m Z-Peller Tug



Listing ID - 2222

| | |
|---------------|--|
| Description | 31.25m ASD Harbour Tug |
| Date Launched | 1984 |
| Length | 32.17m (105ft 6in) |
| Beam | 9.49m (31ft 1in) |
| Draft | 4.81m (15ft 9in) |
| Note | 50T Bollard Pull |
| Location | South Australia |
| Broker | Peter Cookson peter.cookson@seaboatsbrokers.com +61 429 543 180 |
| Price | POA |

Flag State: AUS

Classification Society: DNV

Class Notation: +A1, Towing Service, E, +AMS, +ACCU

Date of Delivery: January, 1984

Shipyard: Tamar Steel Bros Pty Ltd.

Main Dimensions

Length OA.: 32.17 metres

Length Waterline: 29.60 metres

Beam (moulded): 10.60 metres

Depth (moulded): 5.34 metres

Draught: 4.81 metres

Deadweight: 308 tonnes
Gross tonnage: 427 tonnes
Net Tonnage: 129 tonnes
Clear Deck Space: 41 square metres @ 5 tonnes/sqm.

Performance

Maximum Speed: 13.25 knots
Bollard pull ahead: 50 tonnes
Bollard pull astern: 47 tonnes

Capacities

Accommodation: 12 berths 6 cabins
Freshwater: 46.44 cubic metres (cbm)
Fuel: 145.5 cbm
Ballast water: 46.78 cbm
Foam: 13.92 cbm
Dispersant: N/A

Propulsion

Main Engines

Number: 2
Manufacturer: Daihatsu Diesel Manufacturing Co. Ltd.
Model Number: 6DSM 28
Continuous rating: 2 x 1300Kw
Speed: 820 rpm

Propulsion

Number: 2
Type: Z Peller
Manufacturer: Niigata
Propeller diameter: 2200 millimetres
Propeller speed: 265 rpm

Generators

Auxiliary Engines

Number: 2
Manufacturer: Caterpillar
Model Number: 3306
Continuous rating: 125 KVA 415 V r phase 50Hz
Speed: 1450 rpm

Harbour Engines: N/A
Bow Thruster: N/A

Equipment

Towing

Winch Fwd: Norwinch Brake 200 tonne
Winch Aft: Norwinch Brake 200 tonnes
Tugger winch: N/A
Towing Hook: 60 tonnes

Deck Equipment: N/A

Navigation

Magnetic compass: Sestrel Deadbeat 90624

Gyro compass: Tokyo Keiki ES-16

Satellite Communication: N/A

GPS: Kodon KGP-900

Radar: Kodon MD 3604

Echo Sounder: Skipper: 405 EQ30

Auto Pilot: Decca Pilot 450 42F95BN

Communication

GMDSS Area: Electrotech Basic Kit

VHF: Shipmate RS8000

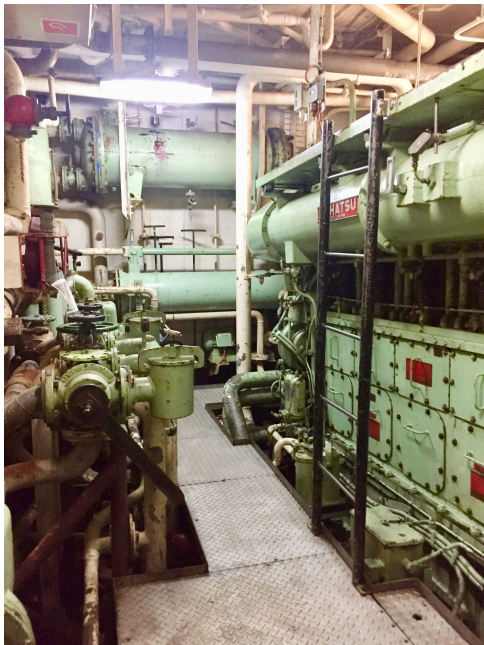
Other

Fire Fighting Equipment: Main fire monitor: Caterpillar 3412 557 bhp;

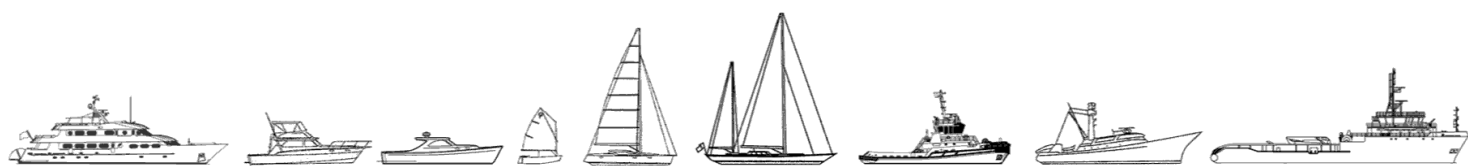
Secondary fire monitor: Caterpillar 3305 200bhp

Deck crane: N/A





The details of all vessels are offered in good faith but we cannot guarantee or warrant the accuracy of this information nor warrant the condition of the vessel. Any buyer should instruct their agents, or their surveyors, to investigate such details as the buyer desires validated. This vessel is offered subject to sale, price change, location or withdrawal without notice.



AUSTRALIA - BULGARIA - INDIA - INDONESIA - ITALY - MALAYSIA - NEW ZEALAND - PANAMA - PHILIPPINES - SINGAPORE - SPAIN - UK - USA - VENEZUELA - VIETNAM