



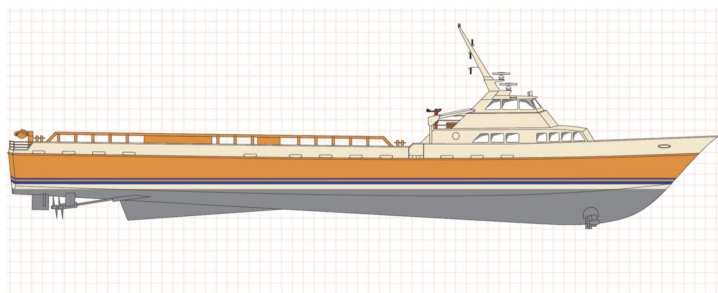
# SEABOATS

MARINE BROKERS WITH A GLOBAL APPROACH

AUSTRALIA - BULGARIA - INDIA - INDONESIA - ITALY - MALAYSIA - NEW ZEALAND - PANAMA - PHILIPPINES - SINGAPORE - SPAIN - UK - USA - VENEZUELA - VIETNAM

[sales@seaboats.net](mailto:sales@seaboats.net) - [www.seaboats.net](http://www.seaboats.net)

## 175ft Fast Supply Vessel, built 2000



### Listing ID - 2241

**Description** 175ft Fast Supply Vessel

**Date** 2000

**Launched**

**Length** 60.29m (175ft)

**Beam** 9.75m (32ft)

**Draft** 2.74m (9 ft)

**Broker** John Kearns  
[john.kearns@seaboatsbrokers.com](mailto:john.kearns@seaboatsbrokers.com)  
+64 21 400 805

### REGISTRATION

Hull: 40

Vessel Type: Fast Supply Vessel

Year Built: 2000

Shipyard: Breaux Brothers Enterprises

### DIMENSIONS

Dimensions: 175 ft. X 32 ft. X 13 ft. (60.29 m X 9.75 m X 3.96 m)

Draft (Maximum Operations): 9 ft (2.74 m)

Freeboard (Maximum Draft): 6 ft (1.83 m)

Clear Deck: 98 ft. x 30 ft. (29.87 m x 9.14 m)

Cargo Deck Area: 2,940 sq. ft. (273.01 m<sup>2</sup>)

Deck Cargo Capacity: 300 LT (304.81 MT)

Gross Tonnage: 98 (88.9 MT)

Net Tonnage: 67 (60.78 MT)

Deadweight Tonnage: 500 LT (508.02 MT)

## **CAPACITIES**

Fuel Oil: 20,263 gals. (76.70 m<sup>3</sup>)

Ballast: 35,019 gals. (132.56 m<sup>3</sup>)

Potable Water: 1,066 gals. (4.04 m<sup>3</sup>)

Dry Bulk: 2,000 cu. ft. @ 80 psi (56.63 m<sup>3</sup> @ 5.5 bar)

## **PUMPS WITH DISCHARGE RATES**

Fuel Oil: 190 GPM @ 140 ft.

Water: 190 GPM @ 140 ft.

Dry Bulk: 120 Tons/Hour

## **MACHINERY**

Main Engines: Three (3) 3516B Twin Speed, 6,000 BHP

Auxiliary Engine: One (1) CAT C9, 503 BHP

Bow Thrusters: One (1) 150 HP Retractable Azimuthing

Speed: 29 knots

Propellers: Three (3) Fixed/Open

Generators: Two (2) CAT 3406; 75 kW each

## **SPECIAL FEATURES**

Ship Motion: Roll Stabilization Tanks

Firefighting: One (1) Monitor @ 3,500 GPM

Quick Releases

Walk-In Cooler

Walk-In Freezer

## **ELECTRONICS**

Electronics Package: Two (2) Radars, Two (2) VHF Radios, Sea SBB (Single Sideband Radio), Depth Sounder, GPS, Navtex Receiver, Encoder, Autopilot, 406 EPIRB

## **CLASSIFICATION**

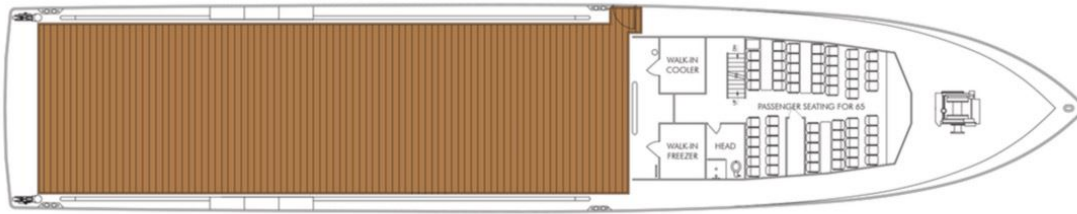
ABS: High-Speed Regulations

ABS: Loadline

## **ACCOMMODATIONS**

Accommodations: 7

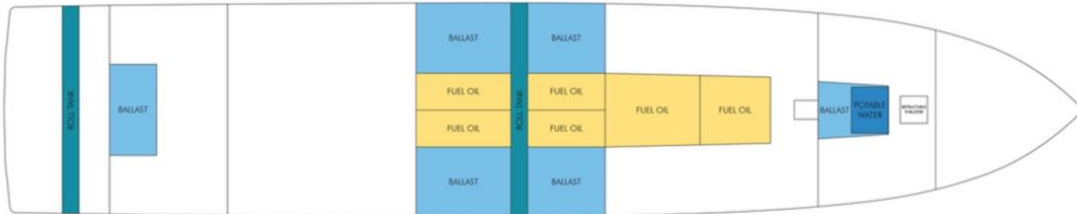
Passengers: 65



MAIN DECK



ABOVE TANK TOP



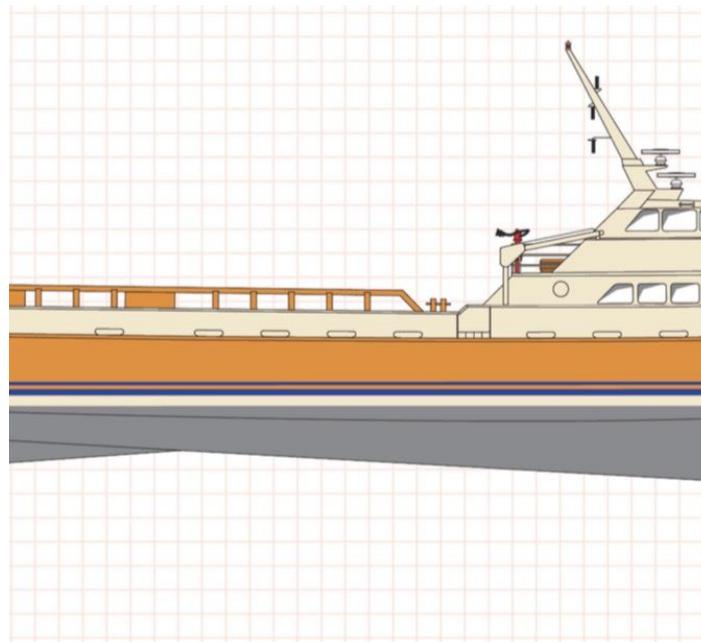
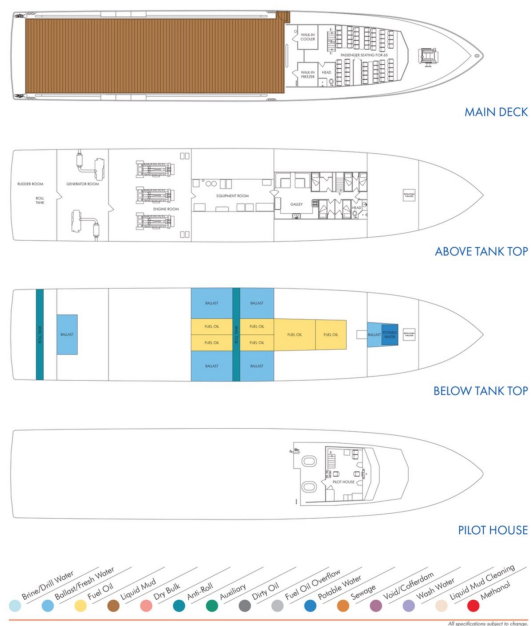
BELOW TANK TOP



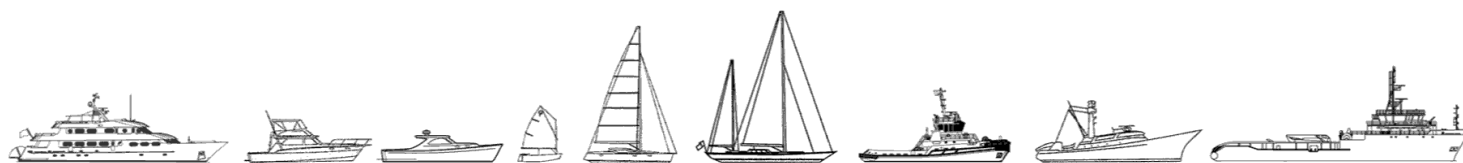
PILOT HOUSE



All specifications subject to change.



The details of all vessels are offered in good faith but we cannot guarantee or warrant the accuracy of this information nor warrant the condition of the vessel. Any buyer should instruct their agents, or their surveyors, to investigate such details as the buyer desires validated. This vessel is offered subject to sale, price change, location or withdrawal without notice.



AUSTRALIA - BULGARIA - INDIA - INDONESIA - ITALY - MALAYSIA - NEW ZEALAND - PANAMA - PHILIPPINES - SINGAPORE - SPAIN - UK - USA - VENEZUELA - VIETNAM