



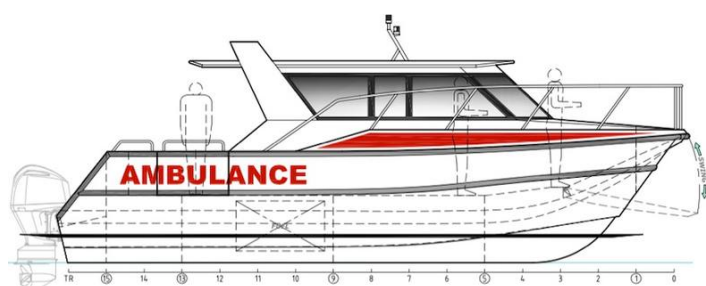
SEABOATS

MARINE BROKERS WITH A GLOBAL APPROACH

AUSTRALIA - BULGARIA - INDIA - INDONESIA - ITALY - MALAYSIA - NEW ZEALAND - PANAMA - PHILIPPINES - SINGAPORE - SPAIN - UK - USA - VENEZUELA - VIETNAM

sales@seaboats.net - www.seaboats.net

NEW BUILD - 9.95m Ambulance Boat



Listing ID - 2272

Description NEW BUILD - 9.95m Ambulance Boat

Date Built to Order

Launched

Length 10.05m (32ft 11in)

Beam 3.9m (12ft 9in)

Location ex shipyard, Mexico

Broker Reynaldo Gil J.

PRINCIPAL PARTICULARS

Construction: Aluminium

Hull Length: 9.95m

Measured Length: 9.95m

LOA: 10.05m

Length of Waterline: 8.56m

Moulded Depth: 2.12m

Beam Extreme: 3.9m (3.84m Moulded)

DWL: 0.45m

Fuel: 2 x 400L

Water: 100

Sullage: 50

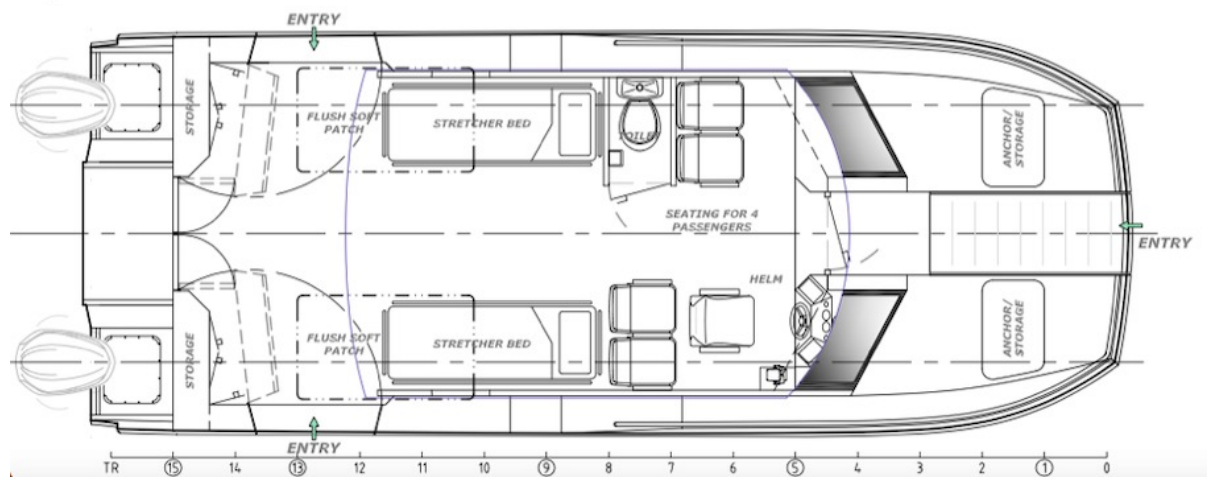
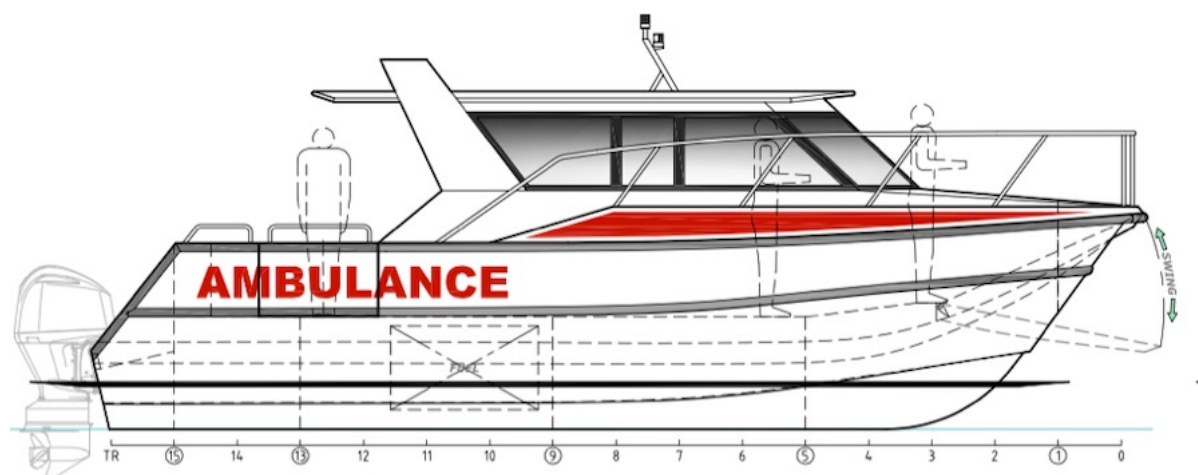
Passengers: 6

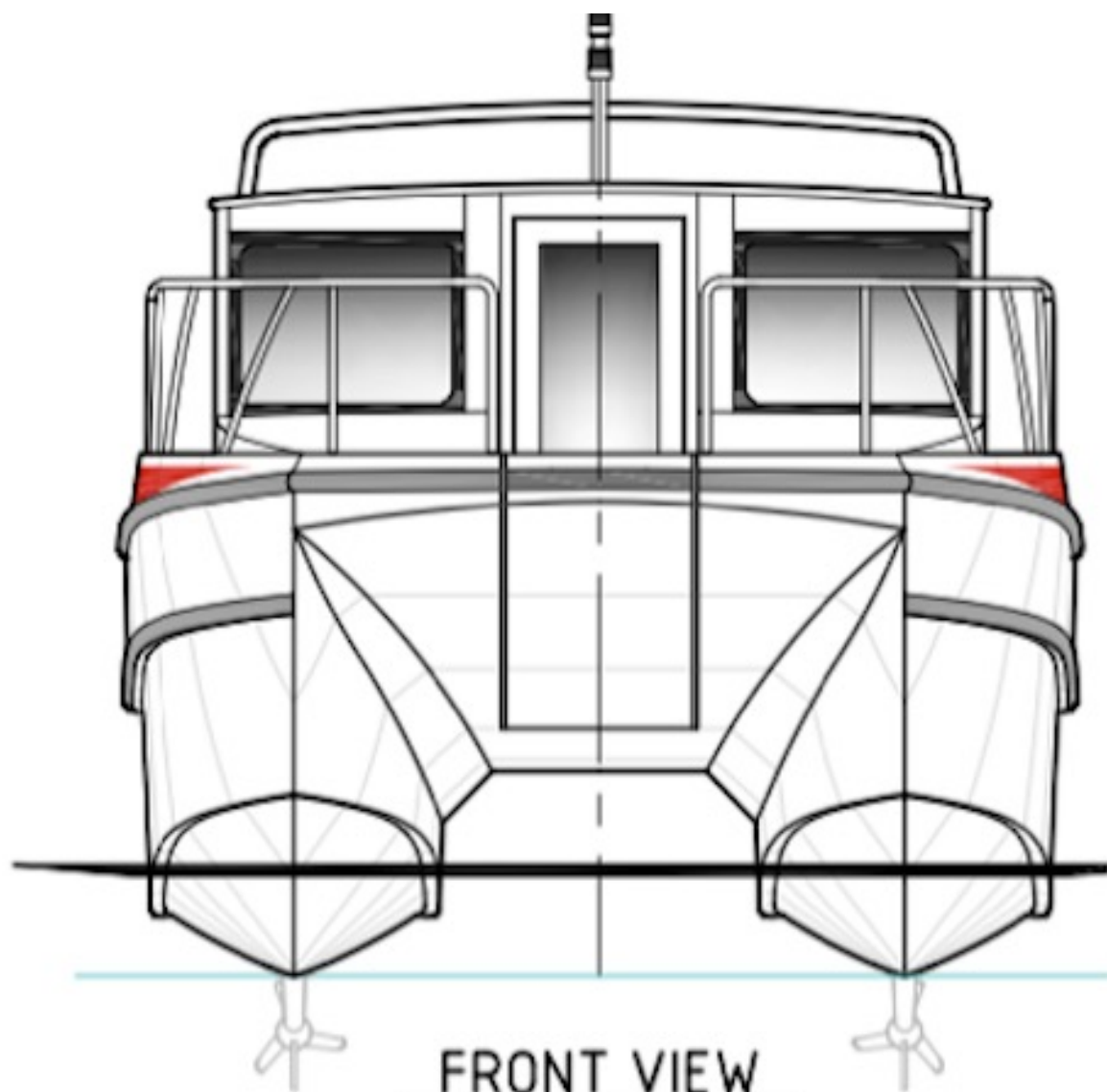
Crew: 1 - 2

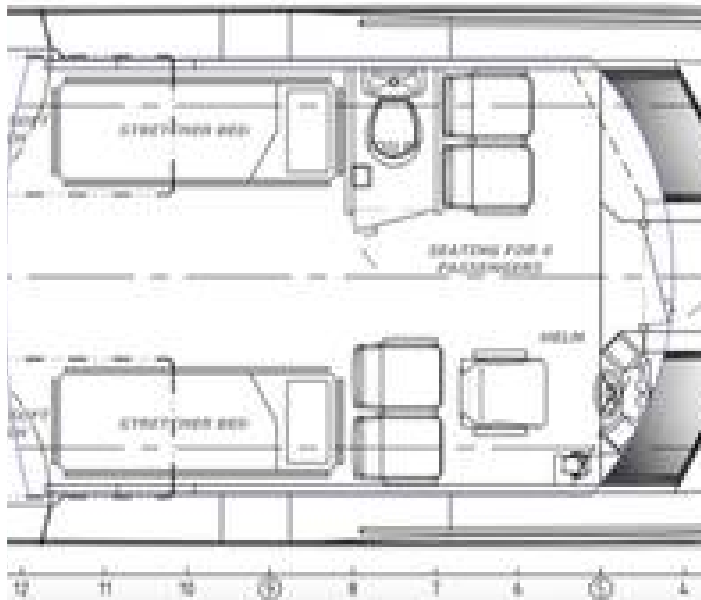
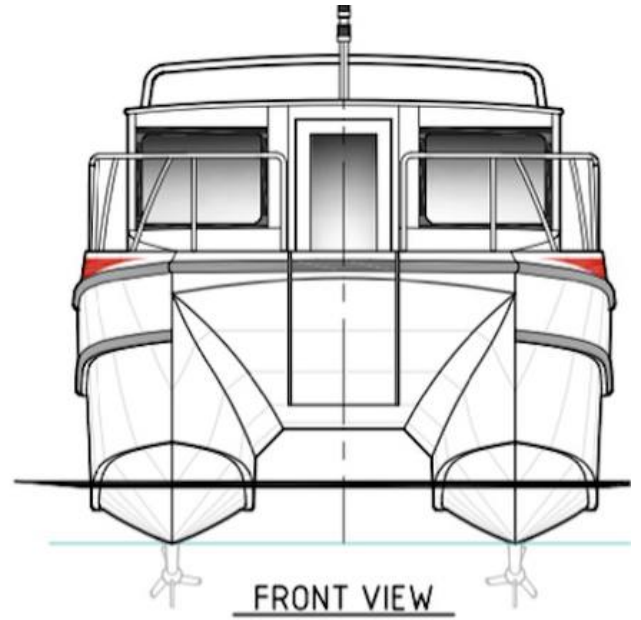
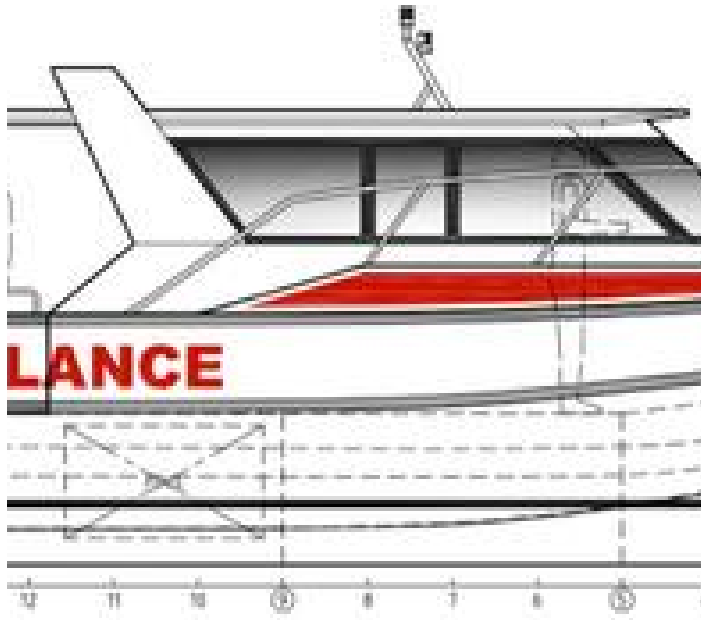
Engines: 2 x 300hp

Propulsion: Outboards

Survey / Class: NSCV 2C (Australian)







The details of all vessels are offered in good faith but we cannot guarantee or warrant the accuracy of this information nor warrant the condition of the vessel. Any buyer should instruct their agents, or their surveyors, to investigate such details as the buyer desires validated. This vessel is offered subject to sale, price change, location or withdrawal without notice.

