



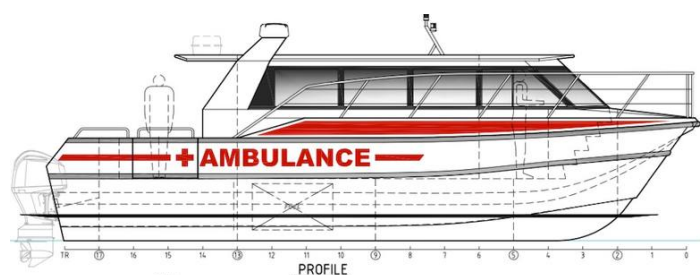
SEABOATS

MARINE BROKERS WITH A GLOBAL APPROACH

AUSTRALIA - BULGARIA - INDIA - INDONESIA - ITALY - MALAYSIA - NEW ZEALAND - PANAMA - PHILIPPINES - SINGAPORE - SPAIN - UK - USA - VENEZUELA - VIETNAM

sales@seaboats.net - www.seaboats.net

NEW BUILD - 11.3m Ambulance Boat



Listing ID - 2278

Description NEW BUILD - 11.3m Ambulance Boat

Date Built to Order

Launched

Length 11.30m (37ft)

Beam 3.90m (12ft 9in)

Draft 0.45m (1ft 5in)

Location ex Shipyard, Mexico

Broker Reynaldo Gil
reynaldo.gil@seaboatsbrokers.com
+58 414 243 4966

OVERVIEW

The plans and specifications for this vessel have been prepared with the intent to set forth the work to be executed and items to be supplied for the construction of a vessel suitable for commercial Ambulance vessel operation. In all cases where contradiction exists between the plans and specifications, the specifications shall govern unless mutually agreed with the owner or owners authorized agent and the builder.

PRINCIPAL PARTICULARS

PRINCIPAL PARTICULARS

LOA: 11.30m

LWL: 9.80m

Beam: 3.90m

Draft: 0.45m

Moulded Depth: 2.12m

DWL: 0.45m

Fuel: 2 x 400L

Water: 100
Sullage: 50
Passengers: 3 (+ Patients)
Crew: 1 -2
Survey / Class: NSCV 2C (Australian)

Engine: 2 of 300hp Yamaha outboard engines with gauges and controls
Propulsion: 2 x outboard engines

Light Speed (approx): 32 knots TBC
Loaded cruise speed (approx): 25 knots @ 85%
Loiter speed (approx): 4 knots

TANK CAPACITIES

Fuel Oil (2): 800L
Fresh Water: 1 of 100L
Sullage: 1 of 120L

DISPLACEMENT AND LOADING

Lightship (approx): TBC tonne
Loaded Displacement (approx): TBC tonne
Typical Load Deadweight (approx): TBC tonne

Principal particulars are subject to slight changes according to the results of stability and trim prognosis regarding the final fit-out arrangement.

VESSEL SPECIFICATION

GENERAL

The vessel shall be designed and constructed to an equivalence of the NSCV or USCG code for open waterway special purpose vessel.

In all cases where contradiction exists between the plans and specifications, the specifications shall govern unless mutually agreed with the owner or owners authorized agent and the builder

Complete plans and specifications shall be submitted to owners flag state maritime division if required and authorized Class surveyor shall inspect the vessel during construction at regular intervals.

Vessel to be constructed under cover in secure premises and builder to maintain insurance with marine insurance, with owners listed on policy until handover.

ALUMINIUM STRUCTURAL

All aluminium is to be of certified marine grade and class approved standard. (Plate 5083 H116 & extrusion 6061 T6) or equivalent. Welding shall be carried out by suitably certified welders in accordance with the supplied weld schedule. The approved welding schedule shall be used during construction in all cases.

STRUCTURAL SCANTLINGS

All scantlings are well above the requirements to allow operation at very safe levels in all conditions. Below is a list of main structural plate sizes:

Hull bottom plate: 5 mm plate (TBC)
Hull side plate: 4 mm plate (TBC)
Deckhouse plate: 3 & 4 mm plate
Deck plate: 3 & 4mm plate

DECKHOUSE

All deckhouse structure shall be of marine grade aluminum. All windows shall be toughened safety glass 8mm forward, 6mm side, 6mm aft' sizes to be maximized. The forward facing windows shall be clear within the restraints of the window deflections. Clear "fixed" type of a suitable size for navigation purposes, four side windows (two on each side) shall be slider type with two at helm and two in aft cabin. Slider windows shall be properly framed with approved heavy-duty aluminum framing the remainder to be approved "stick-on type" with ceramic bands and using Sikaflex approved 296 sealant.

Passenger/crew access to the vessel main deck is via a hinged doors on port and stb side aft' bulwarks. Passenger doors to be wide enough to accommodate passengers with hand luggage and a roller stretcher.

Crew boarding access to foredeck via steps at forward end of cabin. Refer to general arrangement plan for proposed accommodation space layout arrangement.

Hatches by Freeman Marine (or equivalent).

DECK SPECIFICATIONS

MAIN DECK

Passenger seating as per final general arrangement plan, with high back marine seating with armrest and life jacket holders under. One (1) x toilet installed aft.

DECK COVERINGS

Weather Decks: Non – Skid Paint

Passenger Decks: Non – Skid Paint or 'Decord' marine carpet

Toilets internal: Non – Skid Paint

HATCHES

Freeman deck hatches to be provided of watertight standard to all compartments and decks. Alternative access to the underdeck is via 2 x soft patch hatches. Access to the mid-voids shall be via flush deck hatches. The foredeck compartment hatches shall be Freeman hatches.

GROUND GEAR

Ground gear: 2 x 20 kg approved plough anchors plus 1 x 10 metres of 8mm short link chain with 125metres x 16mm poly rope. All ground gear shall be in accordance with requirements.

WINDLASS

Optional

PASSENGER CABIN VIDEO SYSTEM

Optional.

FENDERING

2 x 300mm diameter inflatable fenders with 10mm rope lanyards.

NAVIGATION LIGHTS

The vessel is to be fitted with a complete set of navigation lights in accordance with the requirements of the international preventing of collision at sea regulations. 'Lalizas' seven (7) lights included.

PASSENGER SEATING

Seating arrangement on main deck shall be provided in accordance with the General Arrangement Plan.

Interior seating in the forward crew area shall be 4 (four) x medium back cushioned marine seats with armrests and life jackets under including helm seat. 2 (two) x observer seats in main saloon to be installed also.

HELM & ELECTRONIC EQUIPMENT

HELM & ELECTRONIC EQUIPMENT SHALL INCLUDE

- 1 x JMA-3334 Radar NON-SOLAS CAT3 <500GT
- 1 x SI-TEX SAS-600 CLASS B/SO AIS TRANSCEIVER
- 1 x Ritchie RA-91 Ritchie Angler Compass
- 1 x Marine VHF radiotelephone JHS-800S
- 1 x VHF ICOM M330
- 1 x FURUNO LH5000 30 Watt Loudhailer with LCD
- 1 x Guest 22040A 5" Spotlight / Floodlight Kit
- 1 x GPS chart plotter and 8" screen
- 1 x Tron 60S EPIRB AUTO: 406 Mhz Jotron

The helm console shall include all engine instrumentation. E.g.: voltmeter, tachometer, oil and temperature gauges, engine hours etc. (as supplied by engine manufacturer)

LIFE SAFETY EQUIPMENT

LIFEBUOYS:

Two (2) x lifebuoys, one with salt water activated light and one with 30 metres of 8mm line, fitted with retro-reflective tape, and with the vessel's name and port clearly marked.

LIFEJACKETS:

10 (ten) x SOLAS approved life jackets with whistles and lights

SAFETY EQUIPMENT:

- 2 x electric flashlights.
- 1 x first aid kit.
- 1 x clock
- 1 x code flags.
- 1 x fire blanket
- 1 x hand held air compressed horn Day signal shapes as per code.

ENGINEERING

FUEL SYSTEM

Fuel tanks: Two (2) of 400 L fabricated fuel tanks to be installed on the main deck in double insulated compartments. The tanks shall be fully welded marine grade aluminum with aluminum fittings. (Filler pipe, inspection manhole ports, vents, etc.) Fuel filter to be supplied and installed for each engine. Fuel lines shall be stainless steel.

FRESH WATER SYSTEM

Fresh water tanks: One (1) of 100-ltr separate gravity feed fresh water tank shall be installed above deckhouse roof, centered near toilet area . This will feed toilet and hand basin.

Main Deck:

One (1) off cold water tap in main deck toilet compartment.

W.C. FACILITIES

Main Deck: One (1) of Domestic fresh flush toilet, with thru deck alloy pipes to sullage tank under deck.

Facilities to include wall mirror and toilet roll holder.

Sullage system shall include one (1) of 120 ltr sullage tank with shore-based pump-out stand facility.

FIRE SYSTEM

Portable 4.5kg x 2 dry chemical fire extinguishers in all spaces as required meeting code.

GENERATORS

Not applicable.

STEERING SYSTEM

Yamaha twin engine steering system as supplied.

BATTERIES

Two (2) of 12volt 80 Ah lead acid batteries are to be supplied with bridging bank for mains starting.

One (1) of 12volt 80 Ah lead acid battery to be supplied on deck for emergency radio battery.

The batteries are to be secured in fiberglass, acid proof boxes.

All boxes are to be properly vented.

All battery leads shall be 20 rubber insulated approved cable with disconnect switches. The start lead cables shall be run as direct as possible.

ELECTRICAL SYSTEM

DC system to be designed by approved electrical engineers and installed by certified electrical contractor in accordance with approved plans. All materials shall be of good quality, suitable for marine use. All cables shall be in accordance with the requirements or type class approved, and to be sheathed and fixed with formed clips and screws, cable ties and trays as required. All cables must comply with 75 degree Celsius or better temperature rating. (Lloyds approved)

The system supplied and extent of wiring shall be as listed below:

To supply navigation lights, wiring to main engines.

Supply electrical schematics stamped and approved. Wire DC equipment.

Supply DC switchboard with circuit breakers on installed equipment

Builder to supply and fit electronics.

Supply bilge alarms and float switches. Supply engine start batteries, radio battery and radio battery charger, supply and fit 12-v horn.

Supply and wire all cables necessary to make the vessel operational all above equipment.

The main isolating switch shall be of double pole-linked type. Switches and circuit breakers shall be compatible with their envisaged circuit loading. Suitable cathodic hull protection devices shall be used as required.

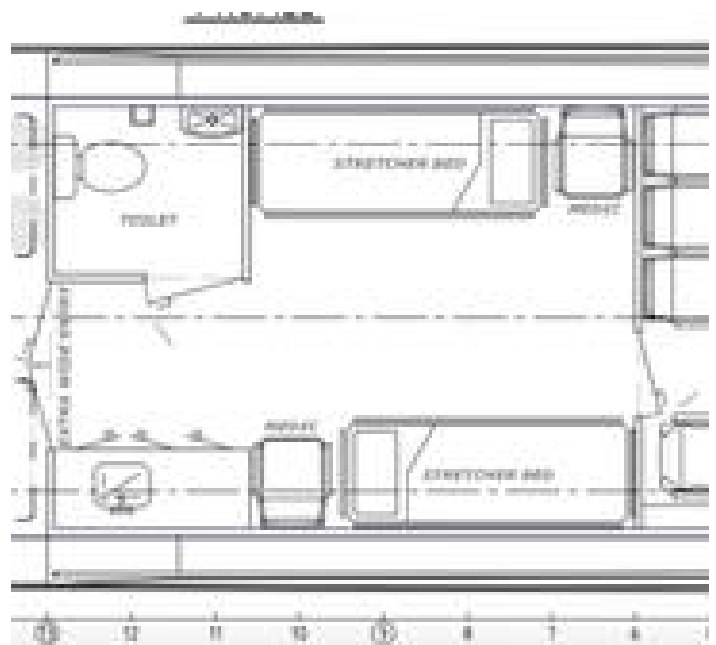
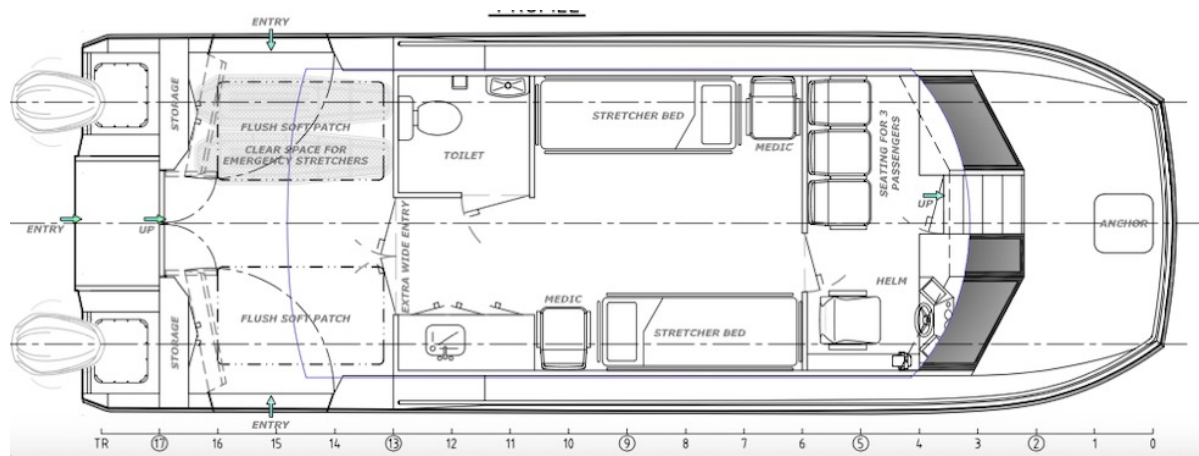
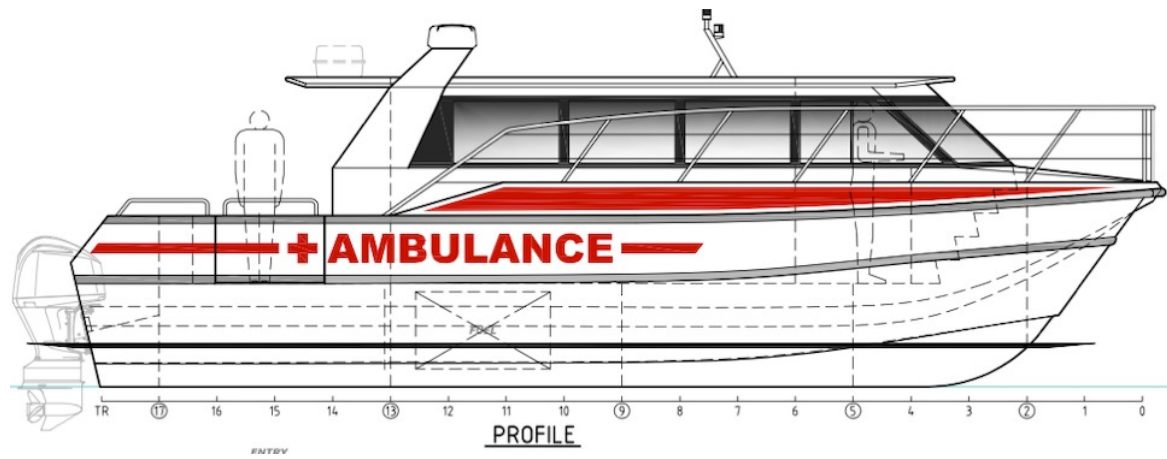
LIGHTS

All exterior fittings (lights, etc.) shall be of waterproof type. The main deck cabin and companionway to have flush mounted 12v LED down lights. At the helm one (1) LED down light. One LED in W.C. Switching for all at the helm.

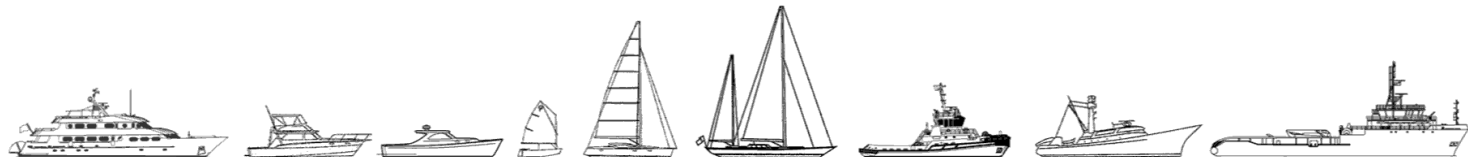
DC lighting to be supplied throughout.

WIPER

One (1) x Speich (or similar) windscreen wiper, self-parking shall be fitted to helm navigation window.



The details of all vessels are offered in good faith but we cannot guarantee or warrant the accuracy of this information nor warrant the condition of the vessel. Any buyer should instruct their agents, or their surveyors, to investigate such details as the buyer desires validated. This vessel is offered subject to sale, price change, location or withdrawal without notice.



AUSTRALIA - BULGARIA - INDIA - INDONESIA - ITALY - MALAYSIA - NEW ZEALAND - PANAMA - PHILIPPINES - SINGAPORE - SPAIN - UK - USA - VENEZUELA - VIETNAM