



SEABOATS

MARINE BROKERS WITH A GLOBAL APPROACH

AUSTRALIA - BULGARIA - INDIA - INDONESIA - ITALY - MALAYSIA - NEW ZEALAND - PANAMA - PHILIPPINES - SINGAPORE - SPAIN - UK - USA - VENEZUELA - VIETNAM

sales@seaboats.net - www.seaboats.net

19.95m Passenger Vessel



Listing ID - 2285

Description 19.95m Passenger Vessel

Date 1991

Launched

Length 19.95m (65ft 5in)

Beam 8m (26ft 2in)

Draft 1.30m (4ft 3in)

Location Nordic

Price 800,000 EUR

Built: 1991, Norway

Hull material: Aluminium

Flag: Norway

Class Society and Notation: Local Class 5 nm offshore

Next DD: February 2021

Next SS: February 2021

PRINCIPLE DIMENSIONS

Length Overall: 19.95m

Breadth: 8m

Draft: 1.30m

GT: 85 tons

MACHINERY & PROPULSION

Total power output: 2172 bhp

Main Engine: 2 x MAN D2842 LE410

Main Propulsion System: 2x Servogear CPP

Auxiliary engine: 1 X 18 KW , LISTER

Speed maximum: 30 knots

Speed cruising: 23 knots

ADDITIONAL INFORMATION

In 2019, the BB engine was replaced, gearbox overhauled and a new shaft fitted.

Passengers Capacity: 88

Consumption; approx 200 L/H

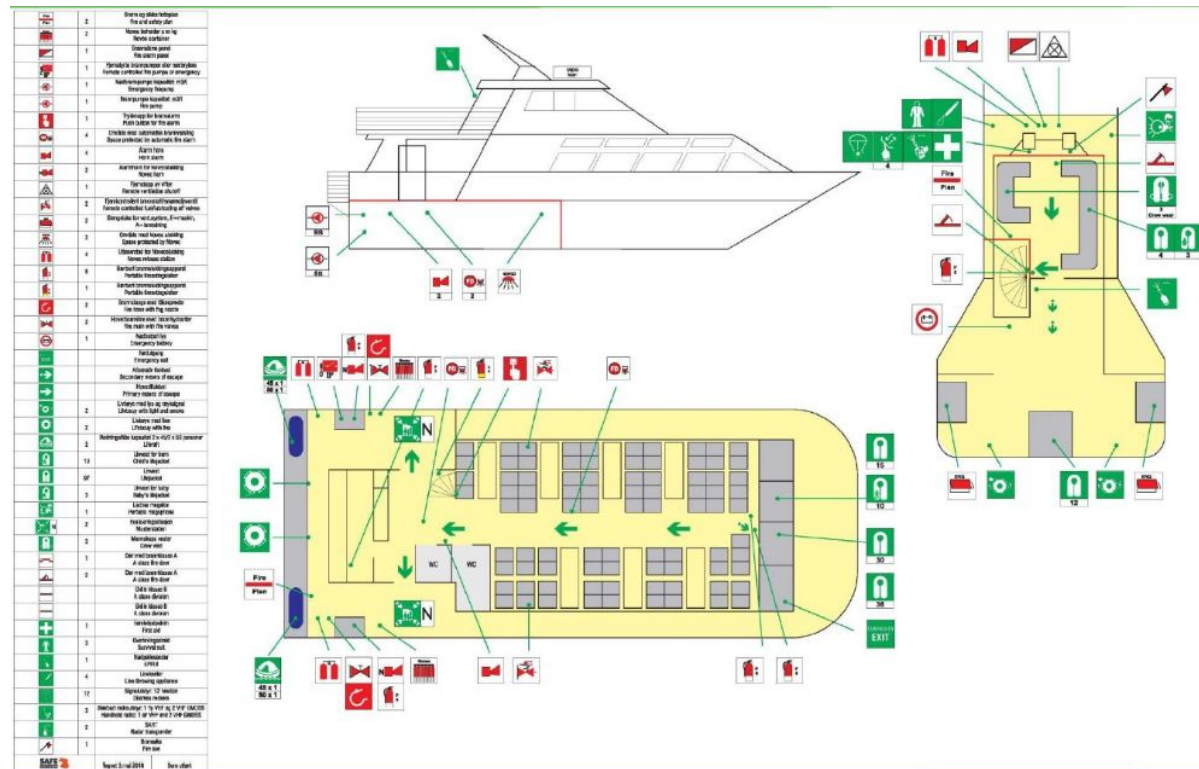
Running hours: Approx. 9.000 H since new

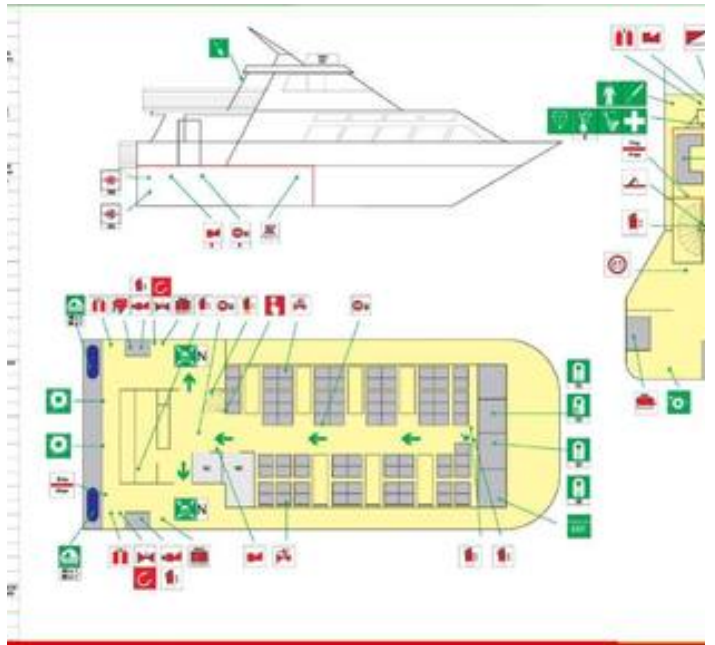
Gear boxes: 2x Servogear, port side new 2019

Fuel Capacity: 2x 1.500 L

Fresh Water: 500 L

NORDIC





The details of all vessels are offered in good faith but we cannot guarantee or warrant the accuracy of this information nor warrant the condition of the vessel. Any buyer should instruct their agents, or their surveyors, to investigate such details as the buyer desires validated. This vessel is offered subject to sale, price change, location or withdrawal without notice.

