



# SEABOATS

MARINE BROKERS WITH A GLOBAL APPROACH

AUSTRALIA - BULGARIA - INDIA - INDONESIA - ITALY - MALAYSIA - NEW ZEALAND - PANAMA - PHILIPPINES - SINGAPORE - SPAIN - UK - USA - VENEZUELA - VIETNAM

[sales@seaboats.net](mailto:sales@seaboats.net) - [www.seaboats.net](http://www.seaboats.net)

## SOLD - 43m Multi-Mission Patrol Vessel



### Listing ID - 3045

**Description** 43m Multi-Mission Patrol Vessel

**Date** 2010

**Launched**

**Length** 43.60m (143ft)

**Beam** 7.93m (26ft)

**Draft** 2.11m (6ft 11in) Full Load

**Location** West Coast, USA

**Broker** Richard Pierrepont  
[richard.pierrepont@seaboatsbrokers.com](mailto:richard.pierrepont@seaboatsbrokers.com)  
+44 7798 607 323

**Price** SOLD

43m Multi-Mission Patrol Vessel built USA 2010 to ABS classification, HSC +A1 +AMS in composite construction. Powered by twin MTU 16V 4000 Series M73L Marine Diesel engines developing 3860 HP each @ 2050rpm and providing a flank speed of 32.4 knots (loaded) and a range of 4000nm at 12 knots. Stern ramp for 8m RHIB-deployment & retrieval. Accommodation for 24 persons.

### DIMENSIONS

Length Overall (Molded): 43.60m (143ft)

Length Waterline: 37.96m (124ft 5in)

Beam (Molded): 7.93m (26ft)

Draft (Full Load): 2.11m (6ft 11in)

**CLASSIFICATION:** ABS HSC + AI +AMS

### PROPULSION

(2) MTU 16 4000 M73L (3,860 hp) proven for fast vessels with high load factors (Maximum mission availability)

15,000 hours' time between overhauls for extended operational use

### **MAXIMUM SPEED**

Full Load: 32.4 knots

Half Load: 32.8 knots

### **RANGE**

10 knots; 4,500 nm

14 knots; 3,000 nm

Flank: 1,025 nm

10% usable fuel remaining

### **TANK CAPACITIES**

Fuel: 51.27 m<sup>3</sup> (13,535 USG)

Fresh Water: 5.68 m<sup>3</sup> (1,500 USG)

Gray Water: 4.17 m<sup>3</sup> (1,100 USG)

Black Water: 2.05 m<sup>3</sup> (540 USG)

### **DISPLACEMENT**

Full Load: 215 MT (475,000 lbs)

Half Load: 196 MT (433,000 lbs)

Light Ship: 151 MT (333,000 lbs)

### **OPERATION ENVIRONMENT:**

Coastal and Offshore Missions

### **MISSION ELECTRONICS:**

Stabilized FLIR camera

X and S Band Radars

Communication Suite

### **ACCOMMODATIONS:**

Berthing for 24 persons

Mess and Galley

### **SUPERIOR PERFORMANCE**

Fast—32.4 knots flank @ full load

Long Range 4,000 nm @ 12 knots

### **MISSION READY**

Integrated command control

360° search—detect—identify capability

### **VERSATILITY-MISSION MULTIPLIER**

Stern ramp for 8m RHIB-deployment/retrieval

Multiple weapon and sensor options

Flexible multi-use deck space provides increased capability

Multiple berthing configurations for crew and embarked personnel

- Fast-Long Range provides multi mission platform
- Series Built-Extraordinary tolerances/Durability/Quality
- Classified ABS HSC +AI +AMS
- Demonstrated performance characteristics
- Low acquisition cost

- Long service life
- Reduced life cycle costs
- Incorporation of commercially available proven technology
- Maximum mission availability

### COMPOSITE ADVANTAGE

High strength to weight materials

High flank and transit speeds

High fuel efficiency

Superior structural integrity

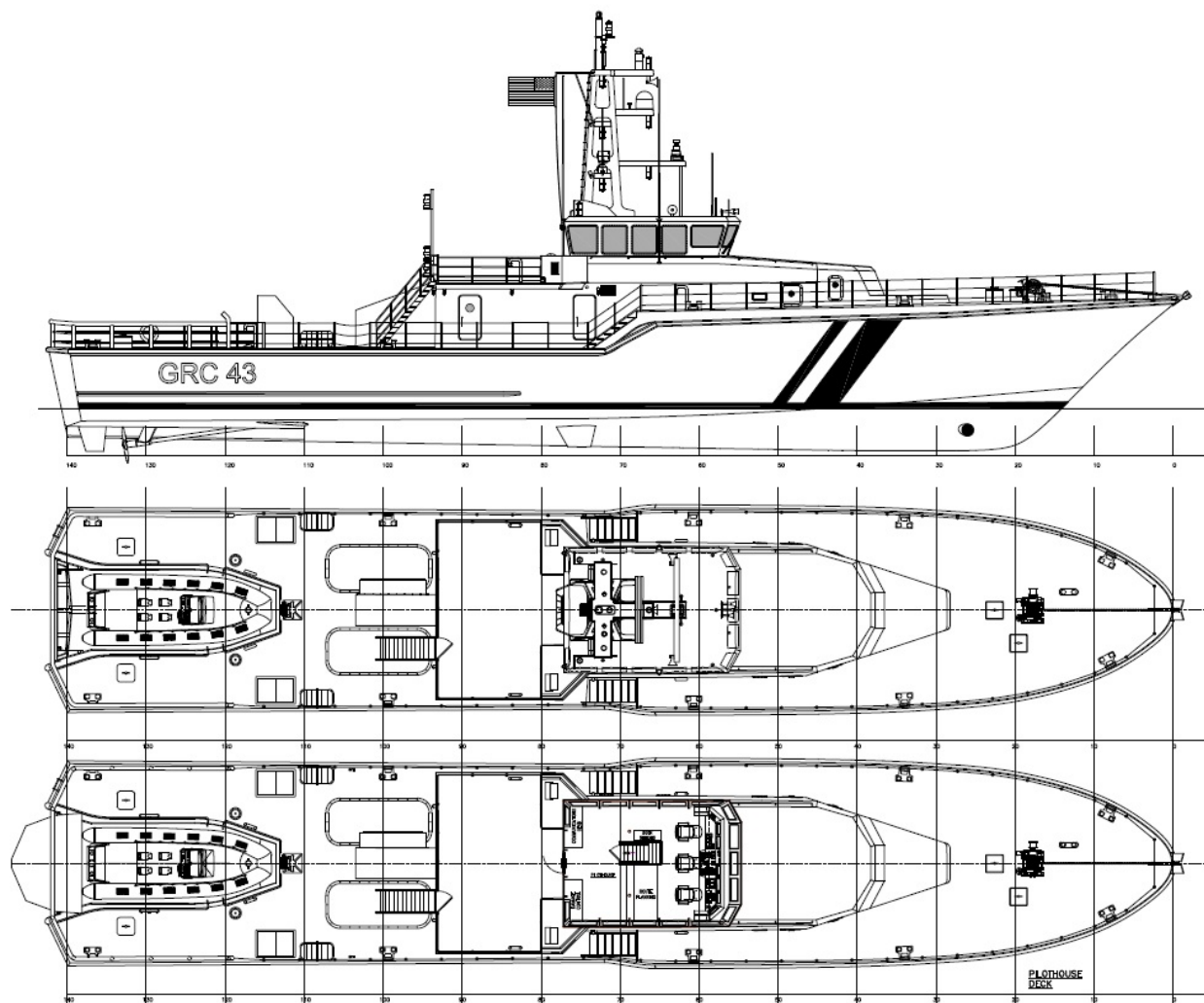
Resistant to impact damage, lowers repair costs

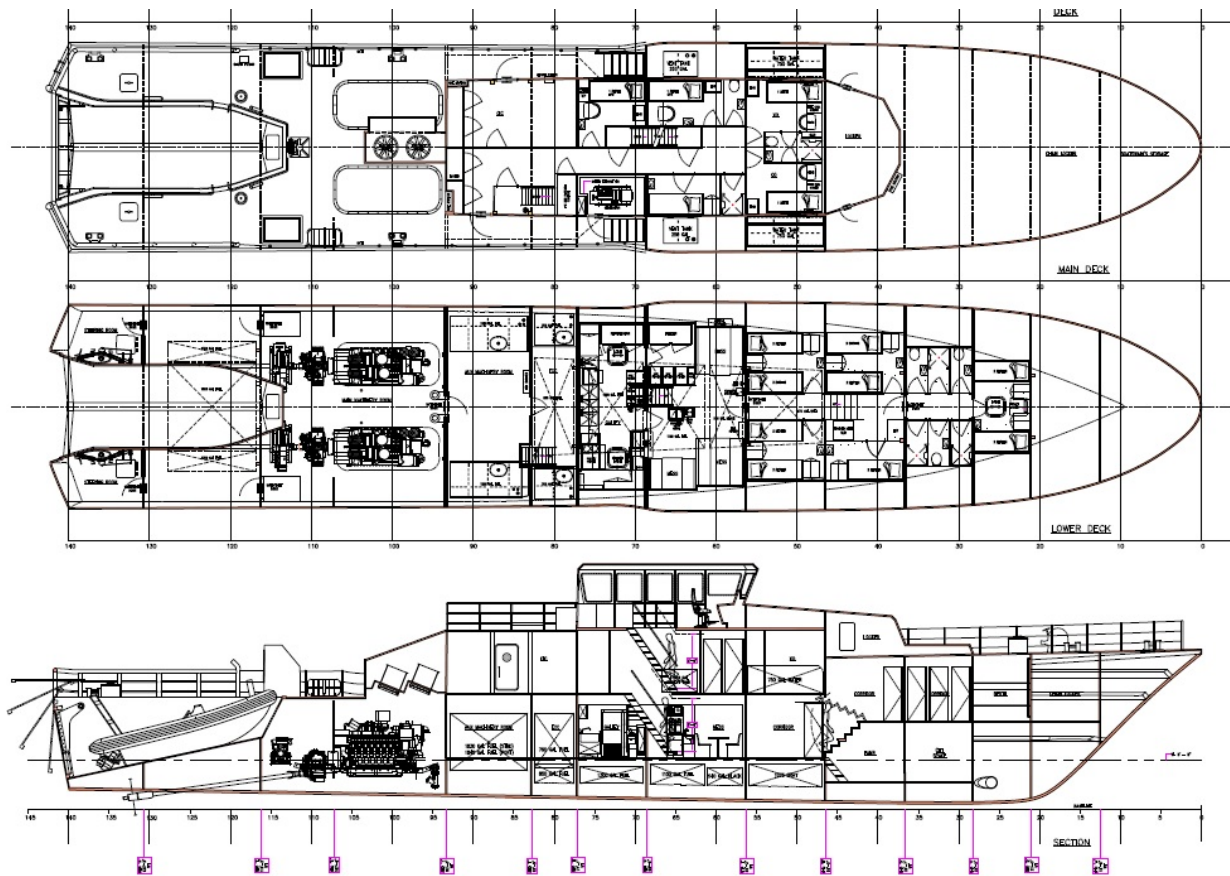
High crew quality of life, improves morale and retention

Noise and vibration reduction reduces crew fatigue

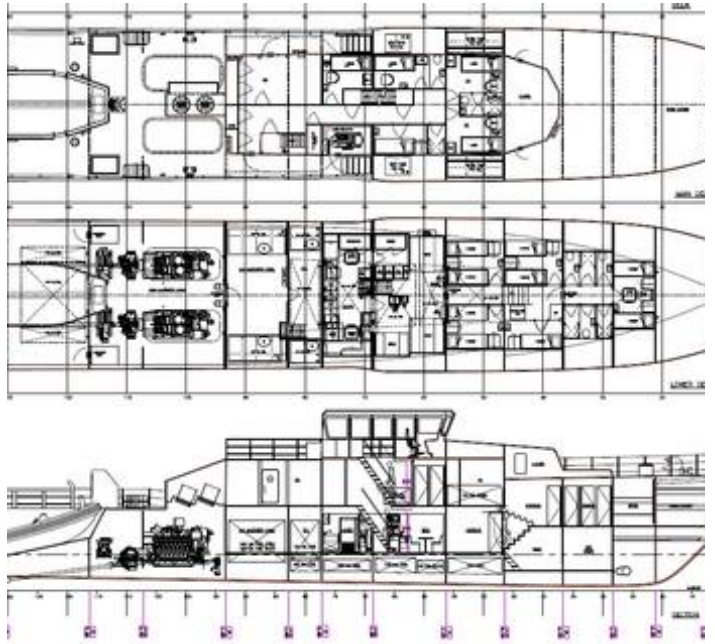
Insulation for cooling/heating benefits improves crew comfort

Does not rust or corrode, reduces maintenance and ownership costs



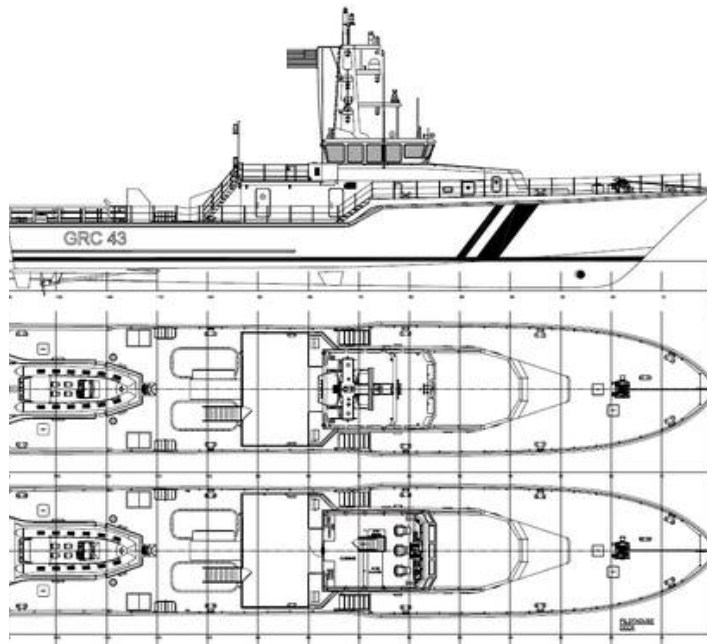






n Insitu ScanEagle® UAS





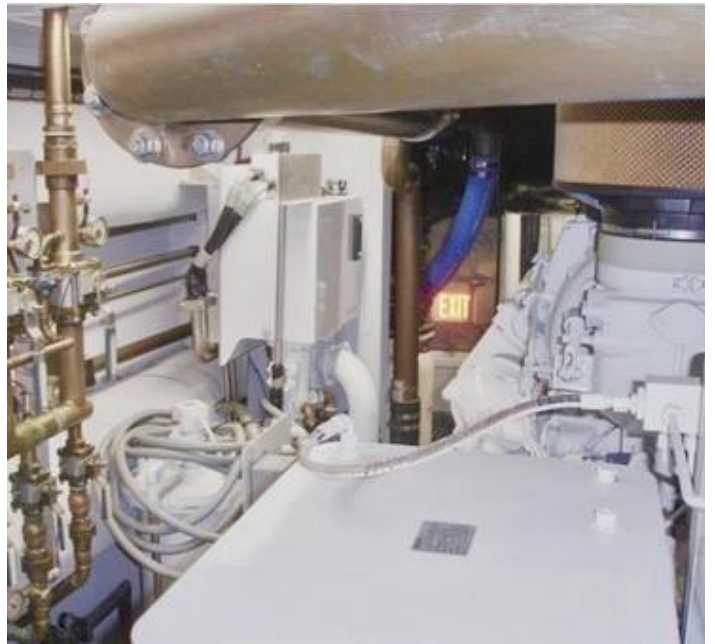
























The details of all vessels are offered in good faith but we cannot guarantee or warrant the accuracy of this information nor warrant the condition of the vessel. Any buyer should instruct their agents, or their surveyors, to investigate such details as the buyer desires validated. This vessel is offered subject to sale, price change, location or withdrawal without notice.



