



# SEABOATS

MARINE BROKERS WITH A GLOBAL APPROACH

AUSTRALIA - BULGARIA - INDIA - INDONESIA - ITALY - MALAYSIA - NEW ZEALAND - PANAMA - PHILIPPINES - SINGAPORE - SPAIN - UK - USA - VENEZUELA - VIETNAM

[sales@seaboats.net](mailto:sales@seaboats.net) - [www.seaboats.net](http://www.seaboats.net)

## NEW BUILD - 15m Fast Assault Boat



### Listing ID - 3063

**Description** NEW BUILD - 15m Fast Assault Boat

**Date Launched** Built to Order

**Length** 15.5m (50ft 10in)

**Beam** 4.3m (14ft)

**Draft** 0.9m (2ft 11in)

**Location** ex factory, China

**Broker** Geoff Fraser  
[geoff.fraser@seaboats.net](mailto:geoff.fraser@seaboats.net)  
+64 21 61 222 5

**Price** POA

The KINGTOUGH 15M Fast Assault Boat is designed using our proven hull form combined with practical cabins layout and advanced, modern technologies to fully cater tough missions in today's ever-changing operating challenges.

### GENERAL

#### General Description

This specification describes the design and construction of the proven reliable, tactically seized, rough sea-going 15M advanced composite vessel which will be arranged as a Fast Assault Craft (hereafter referred to as "vessel") to use in coastal and offshore waters, with equipment capacities to focus on below missions:

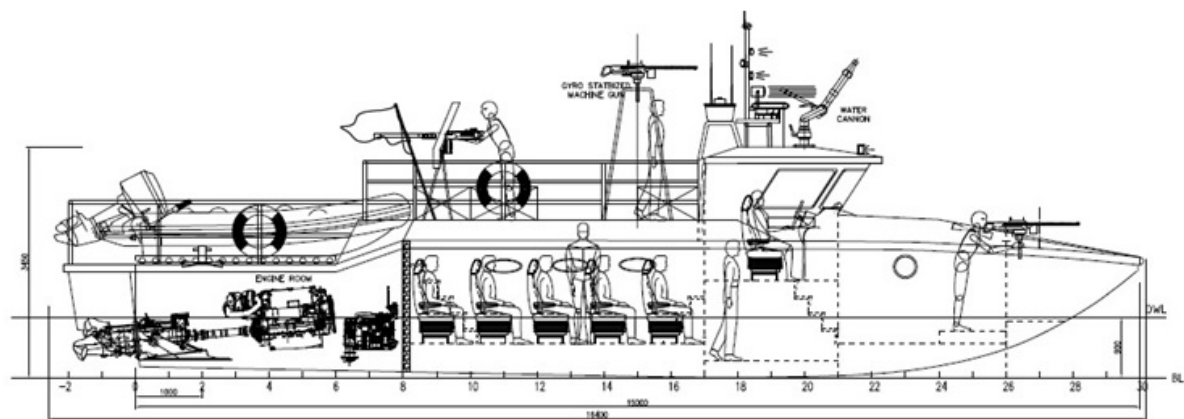
- Combat patrolling;
- Harbor patrolling;
- Offshore patrolling;
- High speed hot pursuit operations;
- Quick reinforcement;
- Combat SAR operations;

- g. Logistic support mission;
- h. Escorting/shouldering vessel;
- i. Swift mobilization of troops.

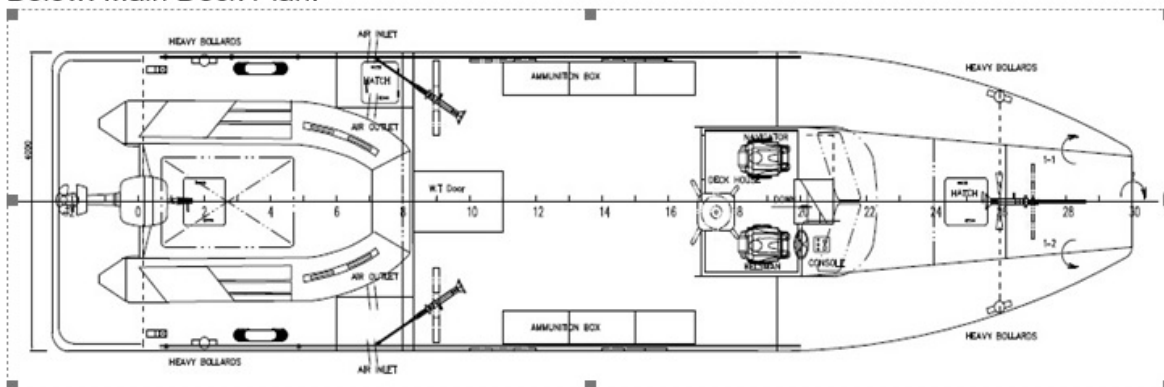
The vessel will be constructed to a high commercial standard with particular attention to minimising noise transference and vibration while enhancing structural rigidity and integrity, and offering best crew comfort and mission-capability.

Principal particulars:

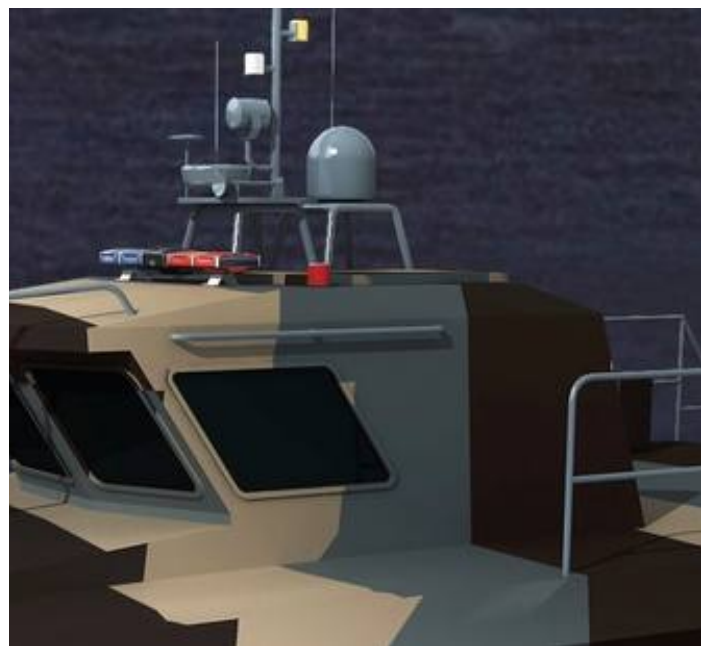
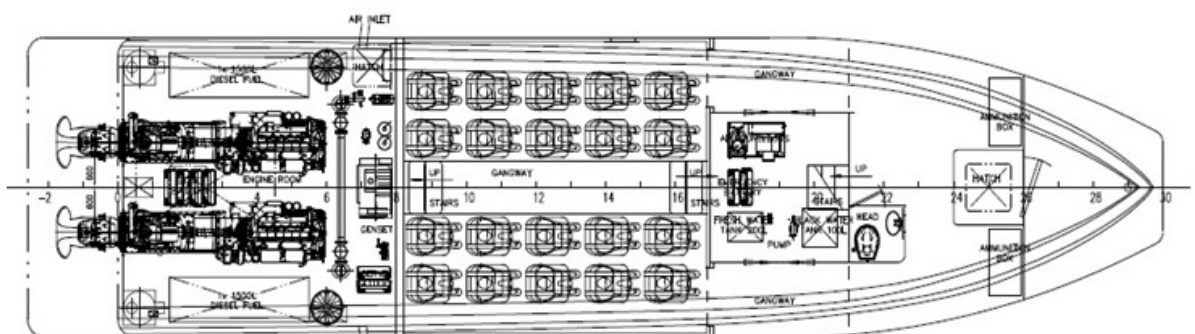
- LOA: 15.5 m
- Hull Length: 14.9 m
- BOA: 4.3 m
- Hull Beam: 4.3 m
- Depth: 2.45 m
- Freeboard (bow): Approx. 1.8 m
- Draft (hull): Approx. 0.9 m
- Displacement (lightship load): Approx. 14 tonnes
- Displacement (half load): Approx. 15.5 tonnes
- Displacement (full load): Approx. 17 tonnes
- Deadrise (transom): 19.68 deg.
- Deadrise (midship): 24.61 deg.
- Engines: 2x SCANIA DI16 077M 662KW 800HP @ 2300RPM, 2000hr/year
- Gearbox: 2 x ZF 325-1
- Engines: 2 x MJP Hybrid 350 Water Jet
- Generator: 2 x CUMMINS ONAN MDKBM 50Hz 9.5KW (One for standard AC supply and one for backup purpose)
- Max. speed: 42 knots at full load/100% MCR/Beaufort Scale sea state two/clear hull
- Cruising speed: Approx. 25 knots
- Fuel capacity: 2 x 750L
- Range: No less than 200 NM at 25 knots cruising speeds with 10% fuel reserved
- Endurance: No less than 4 hours at 42 knots max. speed with 10% fuel reserved
- Compliment: 20 combatants in combatant transport cabin + 2 x crew in bridge house
- Seakeeping ability: Sea state 5 according to Douglas Scale
- Construction: PVC cored sandwich composites to be 3D infused throughout

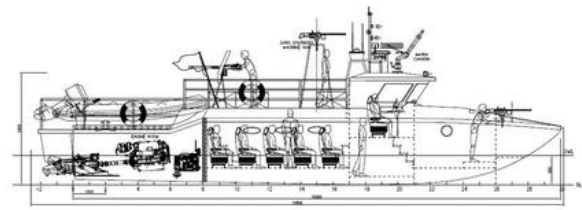
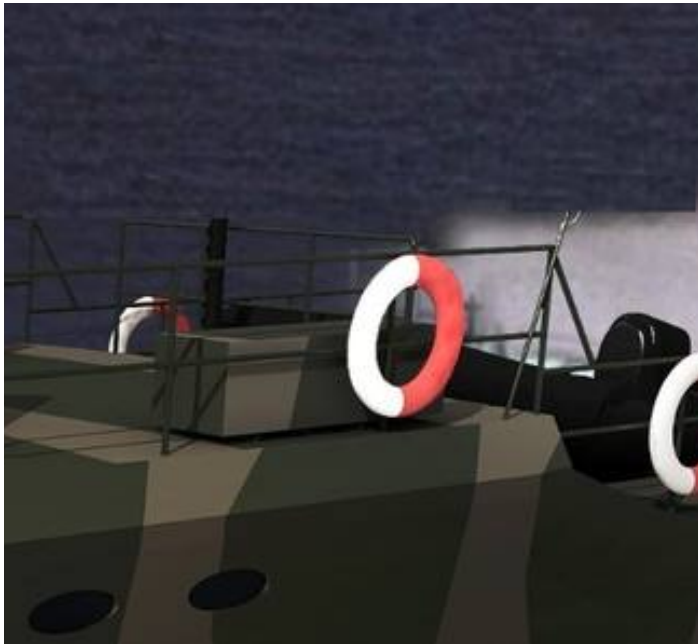


Below: Main Deck Plan:

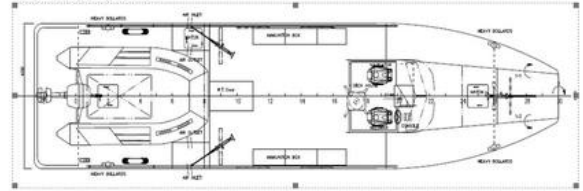


Below: Lower Deck Plan:

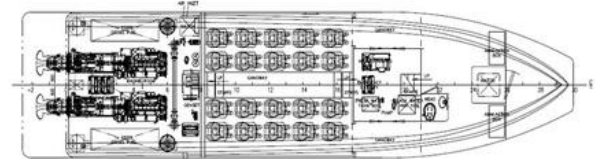




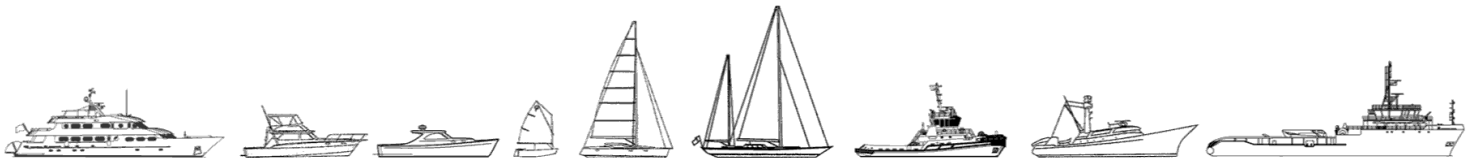
Below: Main Deck Plan:



Below: Lower Deck Plan:



The details of all vessels are offered in good faith but we cannot guarantee or warrant the accuracy of this information nor warrant the condition of the vessel. Any buyer should instruct their agents, or their surveyors, to investigate such details as the buyer desires validated. This vessel is offered subject to sale, price change, location or withdrawal without notice.



AUSTRALIA - BULGARIA - INDIA - INDONESIA - ITALY - MALAYSIA - NEW ZEALAND - PANAMA - PHILIPPINES - SINGAPORE - SPAIN - UK - USA - VENEZUELA - VIETNAM