



SEABOATS

MARINE BROKERS WITH A GLOBAL APPROACH

AUSTRALIA - BULGARIA - INDIA - INDONESIA - ITALY - MALAYSIA - NEW ZEALAND - PANAMA - PHILIPPINES - SINGAPORE - SPAIN - UK - USA - VENEZUELA - VIETNAM

sales@seaboats.net - www.seaboats.net

NEW BUILD - 10m Landing Craft with Enclosed Wheelhouse



Listing ID - 3087

Description	NEW BUILD - 10m Landing Craft with Enclosed Wheelhouse
Date Launched	Built to Order
Length	9.96m (32ft 8in)
Beam	3m (9ft 10in)
Draft	0.76m (2ft 5in)
Location	Italy
Broker	Giuseppe Filippone giuseppe.filippone@seaboatsbrokers.com +39 329 886 8343
Price	As a guide only 155,000 Euros with a 250hp single diesel

This Landing Craft has been designed for serious work in demanding conditions.

Design: FM 1604

Length overall (includes appendages): 11.23m

Hull length: 9.96m

Beam: 3m

Height: 2.85m

Draft (hull): 0.5m

Max. draft: 0.76m

Class / Survey: RINA / BV

CE Category: B / C

Capacities

Fuel: 420 L

Water: 260 L

Sullage: 100 L

Passengers: 10

Crew: 2

Deadweight: 2900 Kg

Propulsion & Performance

Service speed @ standard power: 18 knots

Max speed @ standard power: 22 knots

Main Engines: Can be single 250hp or 2 x 140hp inboard diesel engines

Outboard motors can also be specified

CONSTRUCTION

The structure is of marine grade aluminium : plates of 5083 H116/H321, extrusions of 6061-T6 and weld wire 5183. All materials have RINA / DNV certification.

Transverse frames and bulkheads are of 6 mm. thick plate, spaced 800 mm. Longitudinals are extrusions of several types and thickness on 267 mm. centers.

Shell thicknesses are 5 mm. (sides) and 6 mm. (bottom).

A 6 mm. beach plate adds extra strenght to the center part of the bottom.

The deck is 5 mm. thick on closely spaced deck stringers. The structure is reinforced all around the large hatches that give full access to the engines and forward lockers.

Gunwale, seats and crane foundation complete the hull structure.

Caprails and hull gutters add stiffness and protection to the hull

Lifting eys are welded to the structure and are designed to lift the boat in full load condition.

CHARACTERISTICS

While the hull's dimensions and structure are standard, many other features of the boat can be configured as per owner's requirements. This includes deck layout, wheelhouse dimensions, engine type and power, tankage and deck equipment.

The standard layout includes several high capacity storage options : 2 forward seat lockers with waterproof lids, 1 cabin seat locker and 2 dive bottles lockers (with a capacity of 6 50 lt. Bottles). 2 side doors (700 mm. wide) are located aft of the forward seats. They can be of the "flip down" or "lift out" type or hinged. The boat can be equipped with a small crane installed on a reinforced base.

Push-knees (optional) are designed and built as per owner requirements to address specific work conditions.

The heavy duty bow door is 1.7 mt. wide.

The opening system can be manual (winch) or hydraulic. The aft deck, 1.8 mt. long x 2.8 mt. Wide, is a safe working area. Stern platform to owner's specifications.

Wheelhouse

The standard walkaround wheelhouse is large and comfortable. It is designed to offer good protection to two or three crew members even in bad weather conditions for long work periods.

Access is through a sliding door and it has room for two pilot seats and a professional dive panel.

The toilet compartment is small (1100 mm. x 700 mm.) but can be outfitted with WC, a small sink a shower-head.

Access can be from the cabin or exterior from the side deck.

In the standard layout the wheelhouse is placed slightly offset with enough room for a fore-aft

passage on both sides.

Pilothouse characteristics, dimensions and placement are totally customizable. Options include a smaller walkaround type center console with a T-Top, an offset wheelhouse with passage only in one side or a large full width walk-thru pilothouse.

Power

Standard power is inboard diesel engines (single or twin) with sterndrives.

Large flush hatches give easy access to the engine room.

There is room for a 5.6 kW generator, 4 high capacity batteries and two 47 lt. sullage tanks.

Outboard version

The boat can be powered by one or two gasoline outboard engines, either on a bracket or transom mounted.

Electrical System & Lighting

All electrical wiring in marine cable.

Shore power with control lamp, marked fuses, earth connection and 20 m shore cable.

Isolation transformer with earth plate for protection of galvanic corrosion.

24-volt electrical system.

Main switches with separate battery systems for start, navigation and consumption.

Battery charger with indicator.

220 V-outlets in cabin.

1 searchlight on cabin roof, manual operated.

Navigational lights.

1 floodlight on the working aft deck

Navigation & Electronic Equipment

1 x chart plotter Ray Marine E165

Complete engine instruments with RPM, temperature, oil pressure and voltmeter.

Fuel gauge.

Control panel for all lighting and other electrical equipment.

1 x magnetic compass.

1 x VHF

Safety Equipment

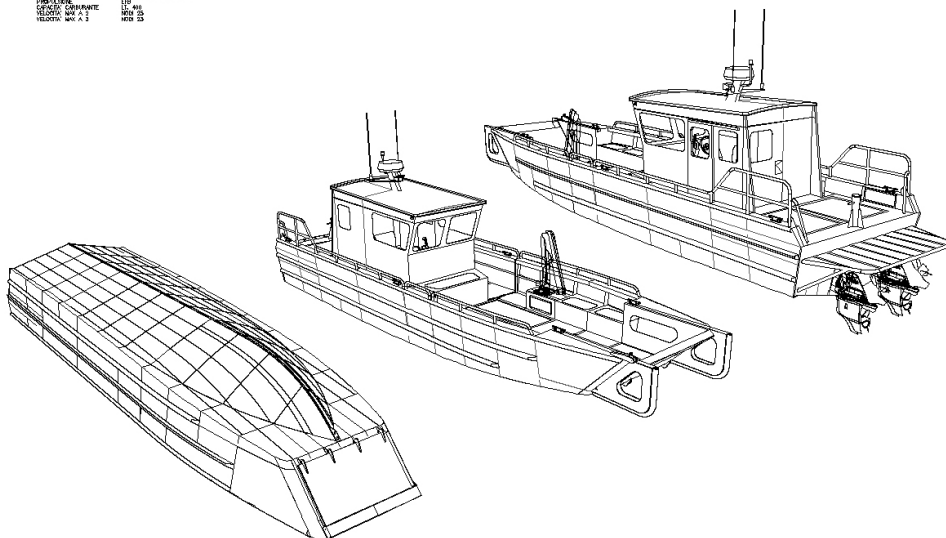
1 manual bilge pump.

1 electrical emergency pump in bilge, manual start.

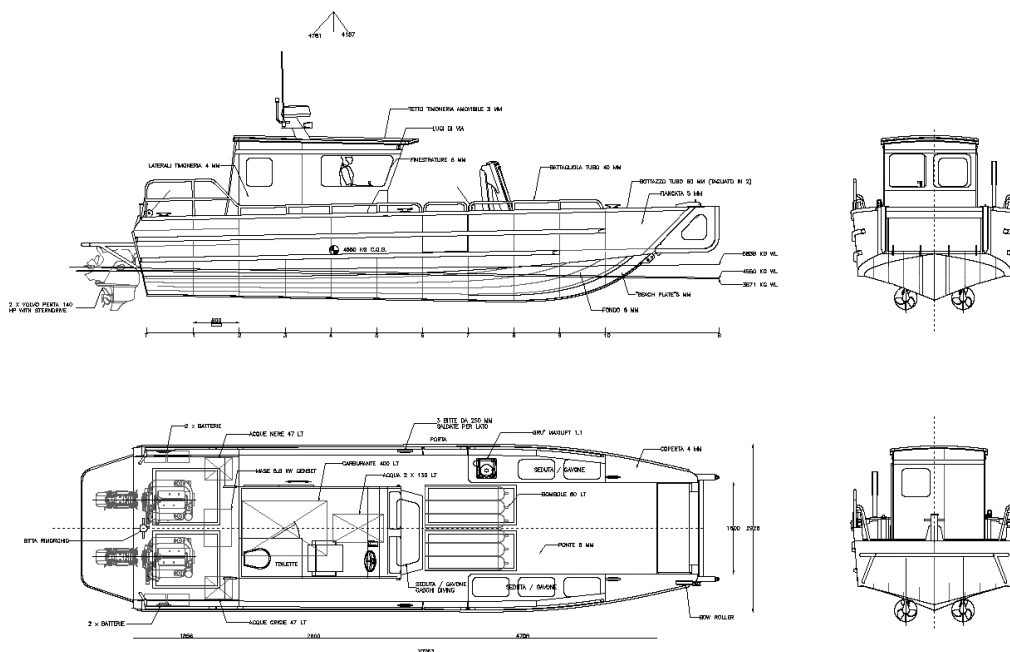
1 electrical emergency pump in engine room, manual start.

1 fire extinguisher at helmsman station

LUNGHEZZA (MIGLIA)	MT. 10,00
LARGHEZZA (MIGLIA)	MT. 3,00
DESL. CEMENTO A 2	KG. 4,500
DESL. CEMENTO A 3	KG. 5,800
MOTORIZZAZIONE	2 X 140 HP VOLVO PENTA
PROPULSIONE	ZFD
CAPACITA' CARBURANTE	L. 400
VELOCITA' MAX A 2	MT/HR 25
VELOCITA' MAX A 3	MT/HR 23



NO.	REVISION	DATE	DESCRIPTION
			DIVING DAUGHTER VESSEL
			DESCRIPTION:
VISTE 3D			
ALL DIMENSIONS IN MILLIMETRES DO NOT SCALE			
PROPRIETARY INFORMATION - COPYRIGHT © 2016 All rights reserved and the information provided herein is confidential and shall not be disclosed in whole or in part without written permission from: SUBSISTE SUTRUPPE			
DESIGN NO.	SHEET NO.	ISSUE NO.	ISSUE DATE
1604	100	NO. 0005	06-11-2014

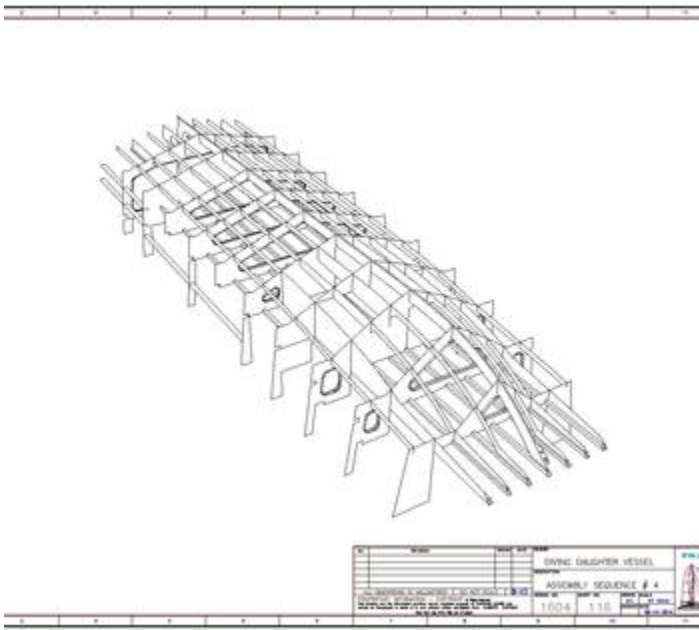


NOTA: VERIFICARE IL CENTRO DI GRAVITÀ DELL'IMBARCAZIONE PRIMA DI SALDARE I "PIG" SOTTO.

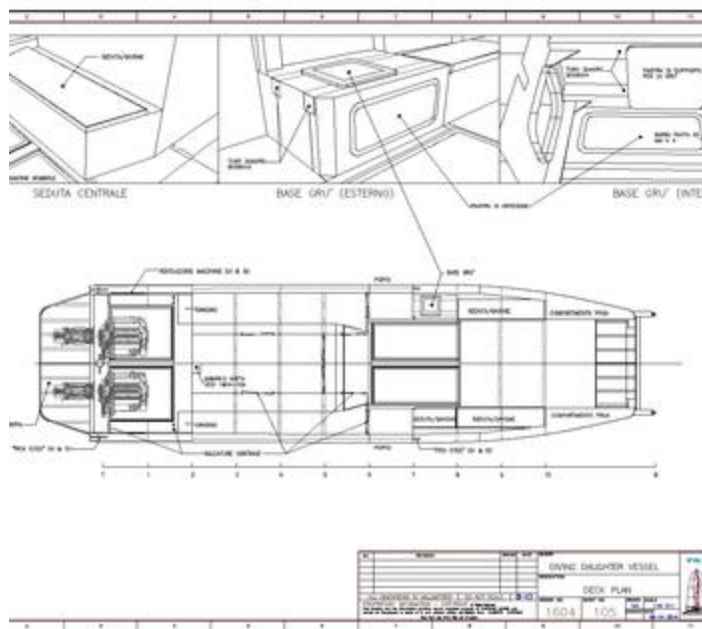
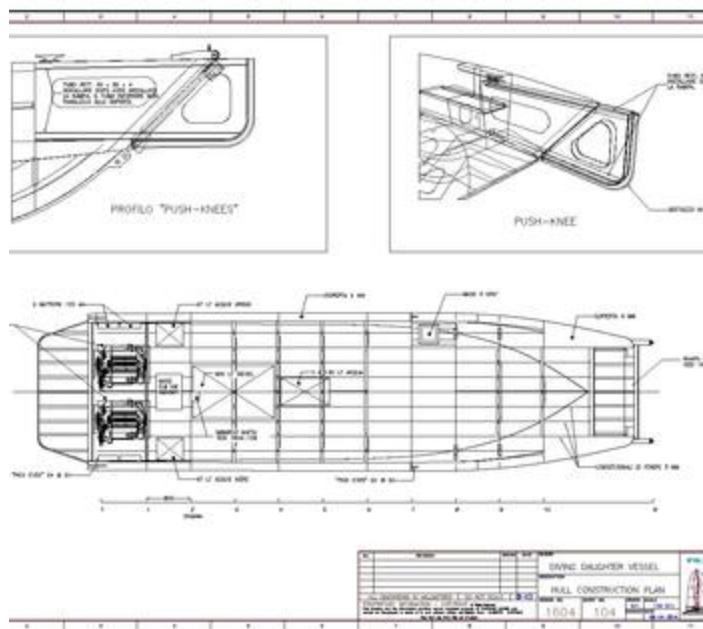
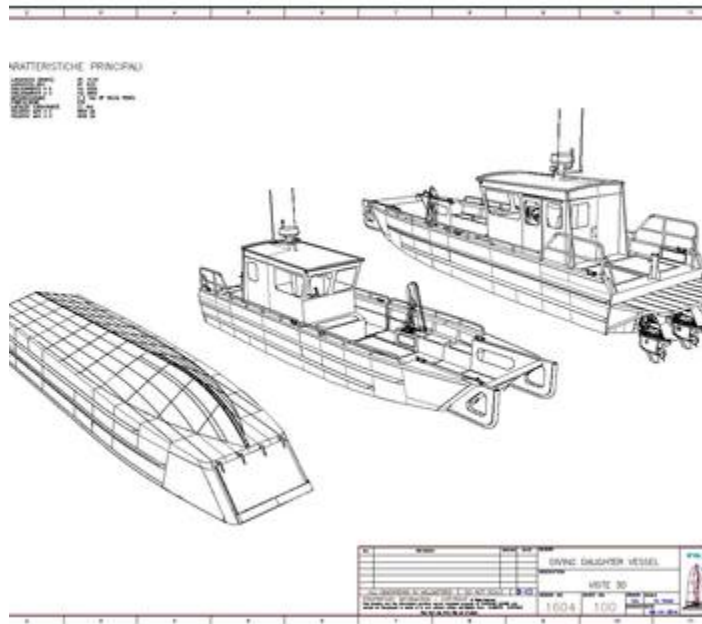
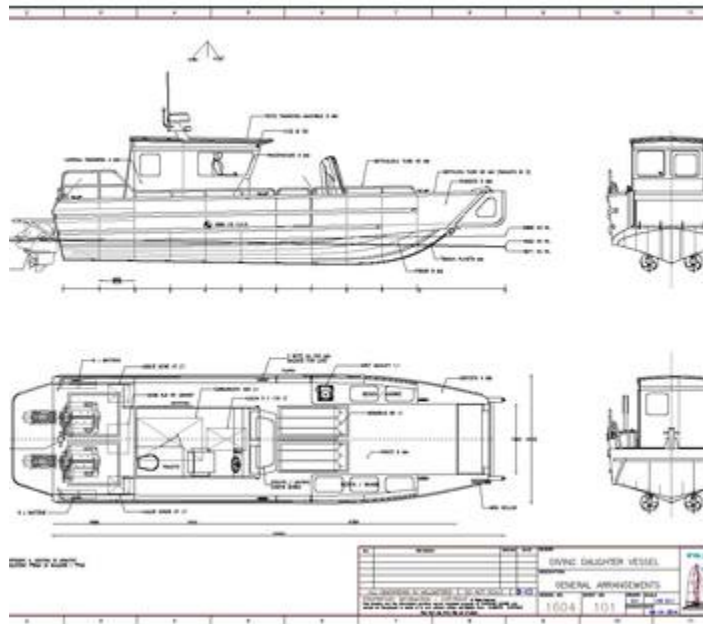
[illegible]







Profile view



The details of all vessels are offered in good faith but we cannot guarantee or warrant the accuracy of this information nor warrant the condition of the vessel. Any buyer should instruct their agents, or their surveyors, to investigate such details as the buyer desires validated. This vessel is offered subject to sale, price change, location or withdrawal without notice.

