



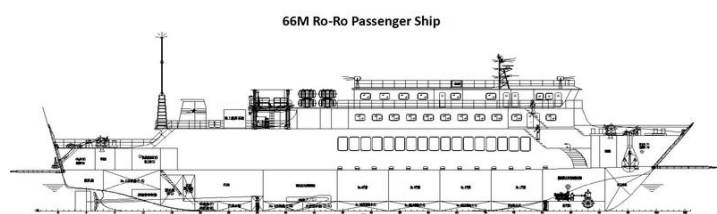
# SEABOATS

MARINE BROKERS WITH A GLOBAL APPROACH

AUSTRALIA - BULGARIA - INDIA - INDONESIA - ITALY - MALAYSIA - NEW ZEALAND - PANAMA - PHILIPPINES - SINGAPORE - SPAIN - UK - USA - VENEZUELA - VIETNAM

[sales@seaboats.net](mailto:sales@seaboats.net) - [www.seaboats.net](http://www.seaboats.net)

## 66m Ro-Ro Passenger.



### Listing ID - 3141

**Description** 66m Ro-Ro Passenger

**Date** 2017

**Launched**

**Length** 66m (216ft)

**Beam** 14m (45ft 11in)

**Draft** 3.2m (10ft 5in)

**Location** China

**Broker** Franklin Taylor  
[franklin.taylor@seaboatsbrokers.com](mailto:franklin.taylor@seaboatsbrokers.com)  
+64 27 276 5383

**Price** USD 4 million

### Dimensions

LOA: 66.00 m

LBP: 58.30m

Breadth, moulded: 14.00 m

Depth, moulded: 5.00m

Designed draft: 3.20 m

### Deadweight in Sea Water

Scantling draft: 1,937.7 t

### Capacity

Diesel oil tanks: abt. 62.96m<sup>3</sup>

Fresh water tanks: abt. 41.8 m<sup>3</sup>

Ballast water tank: abt. 524.71m<sup>3</sup>

Passenger ship level: II Passenger Ship

Passenger ship classification: Class 3

Seating capacity: 398P

Lane height: 4.5m

Total weight of (cars & goods (anti wind grade 8) 400t

Standard car (7000x2500x2500) 20tx20

### **Classification**

+CSA +CSM, RO-RO Passenger Ship, R2, Ice Class B

### **Main Engine**

Type: LB8250ZLC-6/LB8250ZLCZ-6 2 sets

CSR 1324 kW x 750 r/min

### **Service Speed**

Design draft at CSR 14.00 Kn

### **Consumption and Endurance**

M.E. F.O.C. at CSR on S. Speed abt. 200 5% (g/kw\*h)

Endurance on d. draft at CSR and S. Speed 700 nm

### **Propeller**

2 sets x FPP x 4 blades

### **Generators**

Generator engine 2 sets x 180kW + 1 set x 40 kW

Emergency generator engine 1 set x 120 kW

### **Ballast Water System**

Ballast pumps 2 sets x 100m<sup>3</sup>/h

### **Navigation Equipment**

Radar 1 x X-band

DGPS 1set

Servo rudder 1set

magnetic compass (heading device) 1set

AIS 1 set

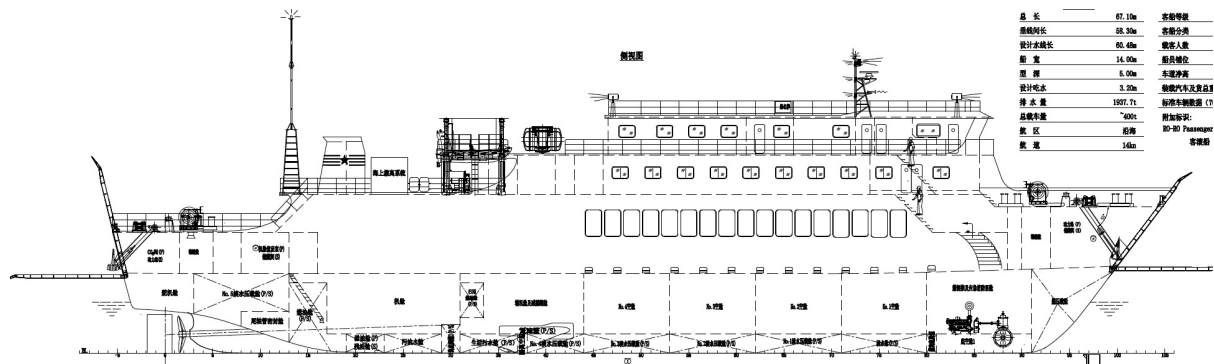
ECS 1 set

echo sounder 1 set

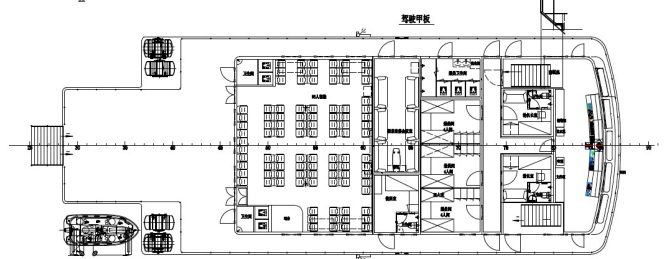
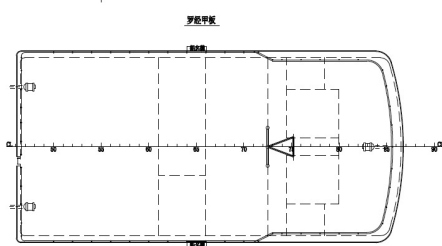
VDR 1set

GPS (BEIDOU) 1set

**Complement:** 18P + 398 passengers

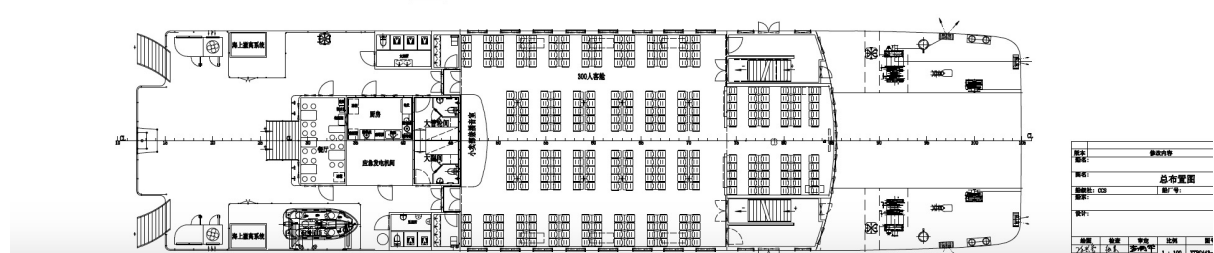


|       |         |                 |  |
|-------|---------|-----------------|--|
| 总 长   | 67.11m  | 客船等级            |  |
| 满载吃水  | 5.30m   | 船舶分类            |  |
| 设计水线长 | 65.40m  | 载客人数            |  |
| 船 宽   | 14.00m  | 船员舱位            |  |
| 型 深   | 1.50m   | 主推进器            |  |
| 设计吨位  | 3.33t   | 船舶吨位及重量         |  |
| 排 水 量 | 1007.7t | 船舶主推进器 (C)      |  |
| 总功率   | ~400    | 附加标识            |  |
| 船 区   | 沿海      | IMO-M Passenger |  |
| 船 级   | 14a     | 客位数             |  |

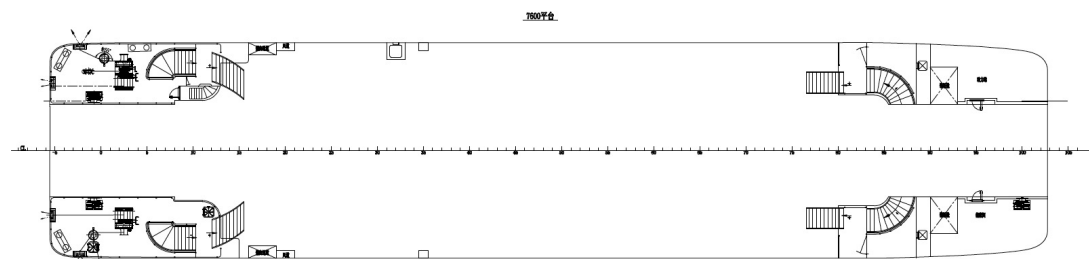


罗经甲板

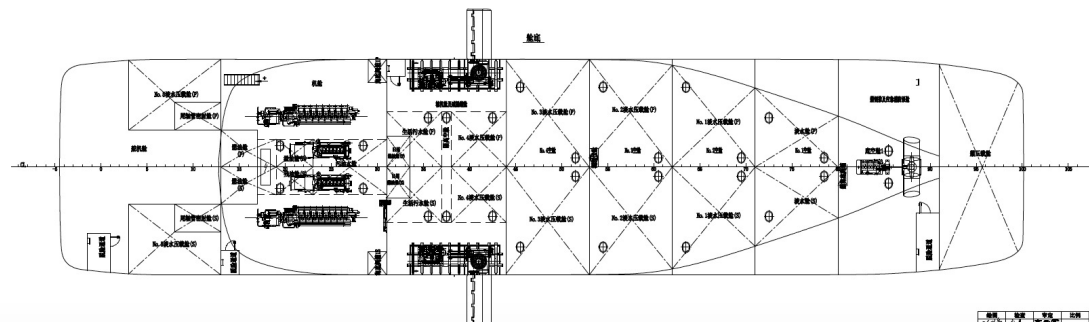
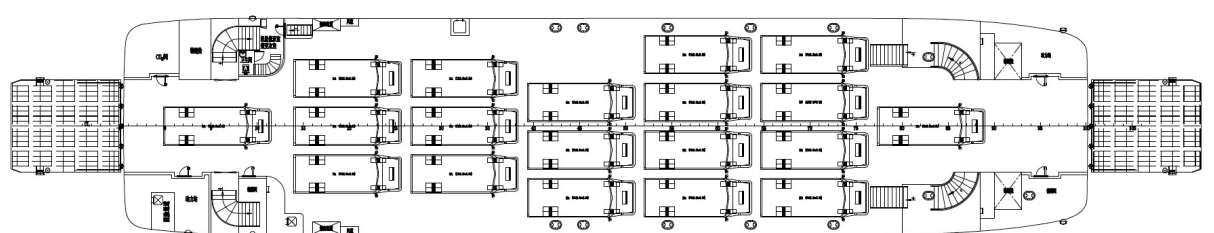
驾驶室甲板



|    |       |
|----|-------|
| 图名 | 总布置图  |
| 图号 |       |
| 比例 | 1:100 |
| 日期 |       |
| 设计 |       |
| 审核 |       |
| 制图 |       |
| 校对 |       |
| 批准 |       |

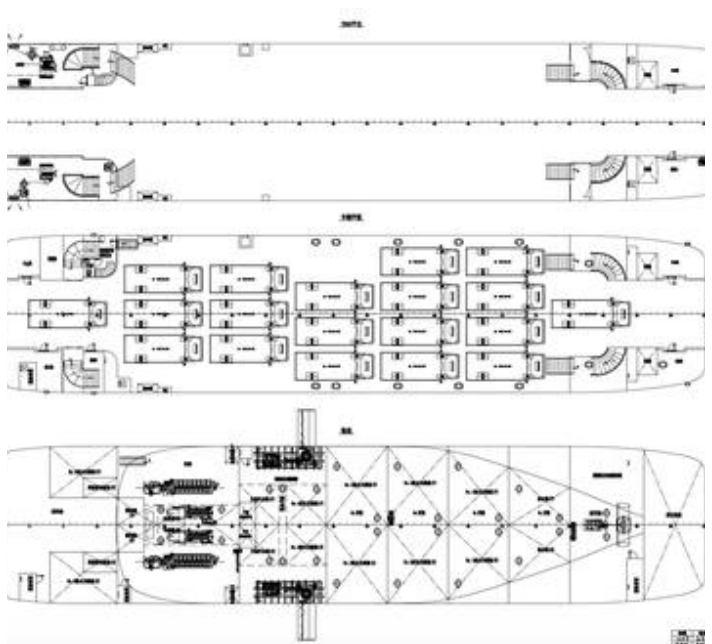
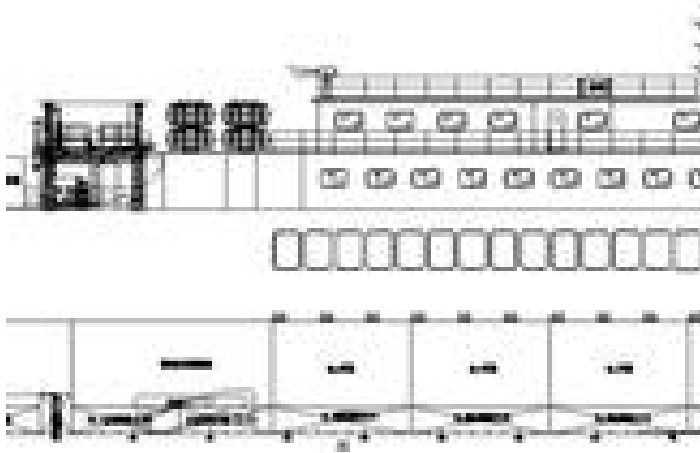


主甲板

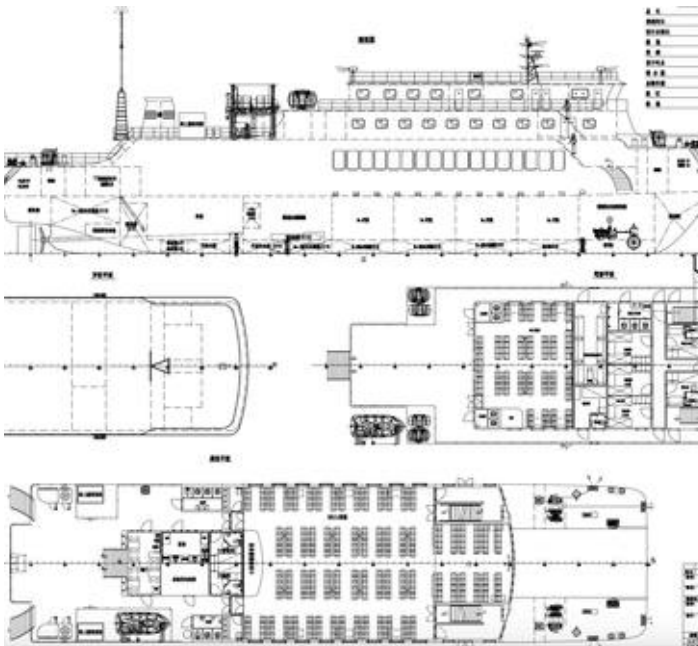


|    |       |
|----|-------|
| 图名 | 总布置图  |
| 图号 |       |
| 比例 | 1:100 |
| 日期 |       |
| 设计 |       |
| 审核 |       |
| 制图 |       |
| 校对 |       |
| 批准 |       |

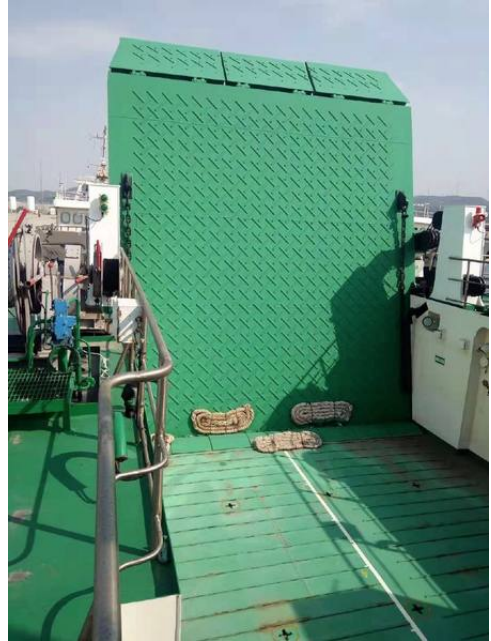
## 66M Ro-Ro Passenger Ship































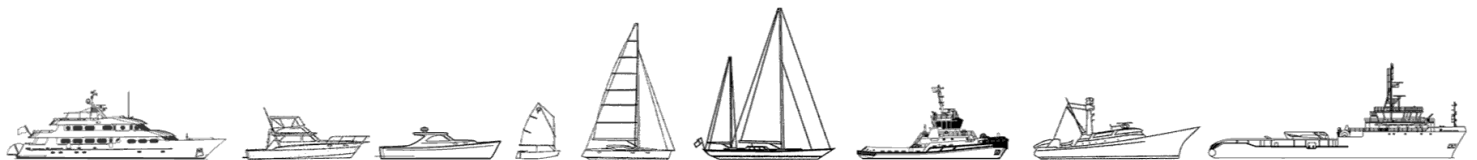








The details of all vessels are offered in good faith but we cannot guarantee or warrant the accuracy of this information nor warrant the condition of the vessel. Any buyer should instruct their agents, or their surveyors, to investigate such details as the buyer desires validated. This vessel is offered subject to sale, price change, location or withdrawal without notice.



AUSTRALIA - BULGARIA - INDIA - INDONESIA - ITALY - MALAYSIA - NEW ZEALAND - PANAMA - PHILIPPINES - SINGAPORE - SPAIN - UK - USA - VENEZUELA - VIETNAM