



SEABOATS

MARINE BROKERS WITH A GLOBAL APPROACH

AUSTRALIA - BULGARIA - INDIA - INDONESIA - ITALY - MALAYSIA - NEW ZEALAND - PANAMA - PHILIPPINES - SINGAPORE - SPAIN - UK - USA - VENEZUELA - VIETNAM

sales@seaboats.net - www.seaboats.net

42m Crane Barge For Charter



Listing ID - 3145

Description 42m Crane Barge For Charter

Length 42m (137ft 9in)

Beam 22m (72ft 2in)

Draft 2.5m (8ft 2in)

Location UK

Broker Richard Pierrepont
richard.pierrepont@seaboatsbrokers.com
+44 7798 607 323

Price Notes For Charter Only

Hull material: Steel

Flag: St Vincent & The Grenadines

Class Society and Notation: INSB International Load Line

PRINCIPLE DIMENSIONS

Length Overall: 42.00 m

Breadth: 22.00 m

Draft: 2.50 m

NT: 373 tons

GT: 1246 tons

DWT: 750 tons

ADDITIONAL INFORMATION

OTHER DETAILS

International Load Line

360° revolving offshore heavy lift crane

150 te lift @ 20 m radius

Heavy Duty 6 point mooring system

Accommodation for 14 persons

Offshore, nearshore & harbour heavy lift platform, including salvage, construction & drilling

Type: Crane Barge (Dumb)

Fuel Capacity: 56 tons

Fresh Water: 26 tons

Auxillary Equipment

Main Generators: Twin Caterpillar 3406

Aux Generators: Twin Caterpillar 3304

Equipment

Crane: Pedestal Mount Dravo 360° slew 150 te @ 20 m radius

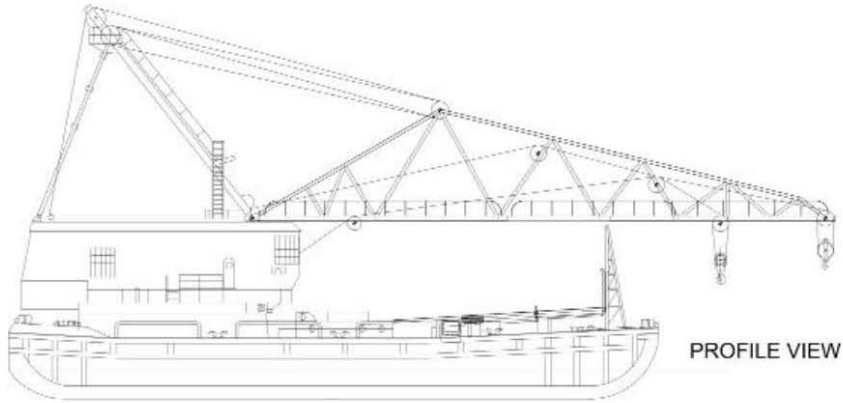
Mooring System

6-point heavy duty Skagit/Smatco>350 m 42 mm wire

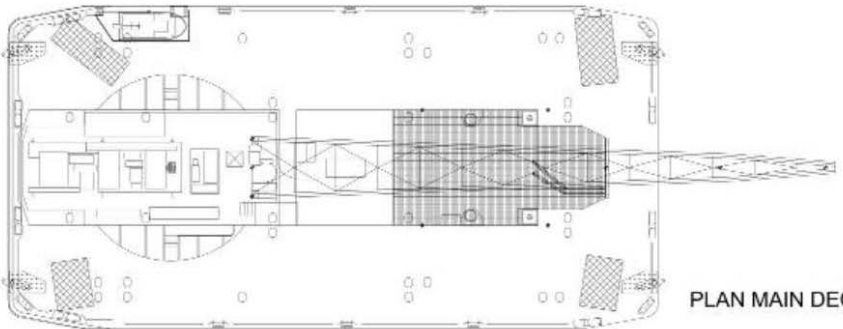
Accommodation

14 persons

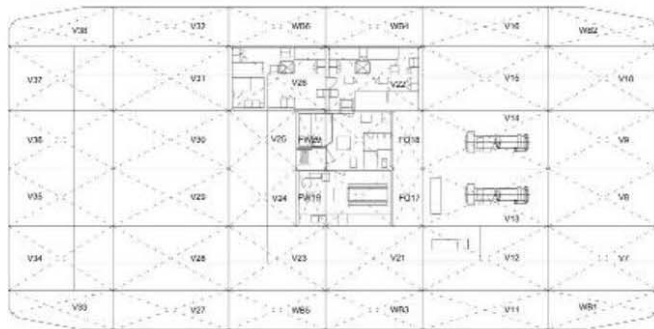
Full domestic facilities self-sustaining



PROFILE VIEW

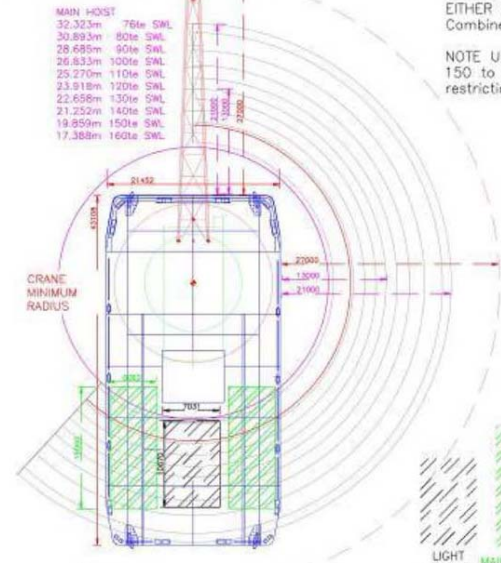


PLAN MAIN DECK



PLAN BASELINE

AUX
38m 25.4te SWL



INDICATED BOOM HEIGHT MUST HAVE SAFETY WORKING CLEARANCE SUBTRACTED FOR MINIMUM BELOW HOOK HEIGHT.

ALL SWL IN TONNES ARE NET OF HOOKS AND HOIST LINES (ie gross lift on hook)

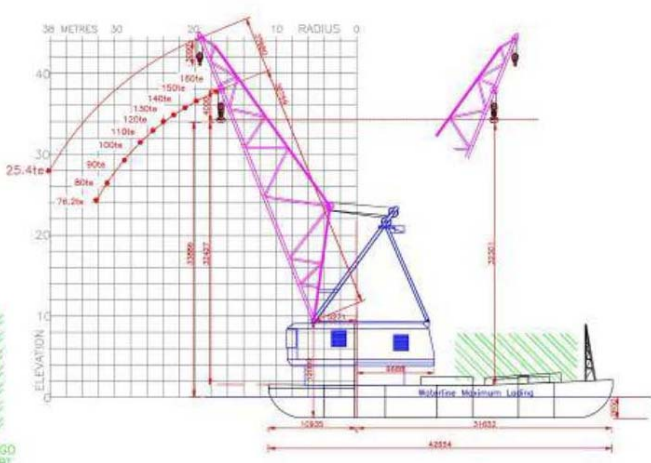
EITHER AUXILIARY OR MAIN HOIST.
Combined Hoist Duties Not Available

NOTE Up to 150 tonnes, ILO Certificate applies.
150 to 160 tonne lift is special category lift, special restrictions apply ref INSB Criteria.

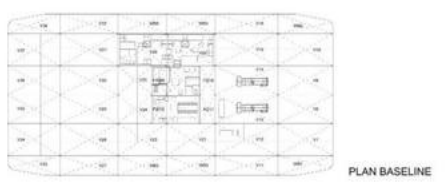
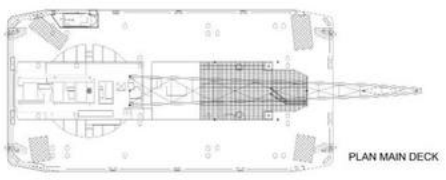
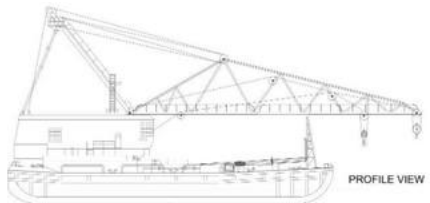
Dimensions

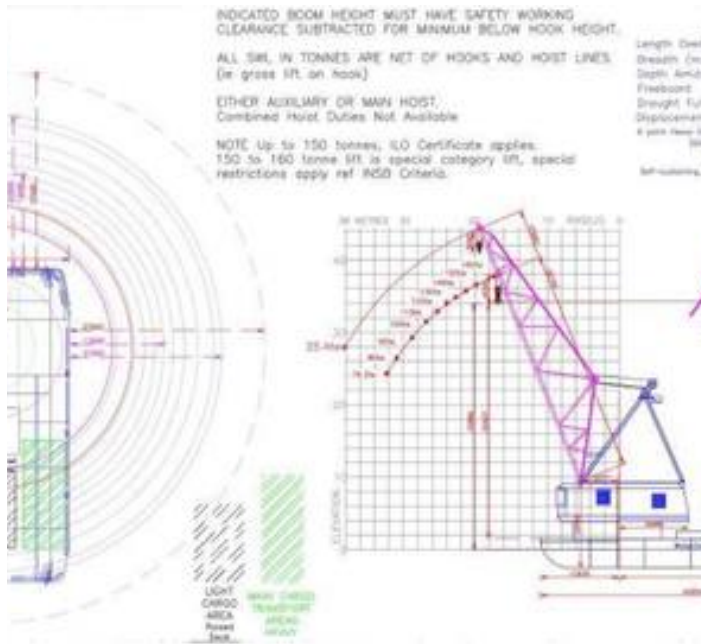
Length Overall	42.67m
Breadth (max.)	21.33m
Depth Amidships	3.63m
Freeboard	1.18m
Draught Fully Laden	2.65m
Displacement Fully Laden	2,318.48te
6 point Heavy Duty Mooring system Skagit/Smotac 350m x 42mm wire rope	

Self-sustaining, full domestic facilities, 15 berths

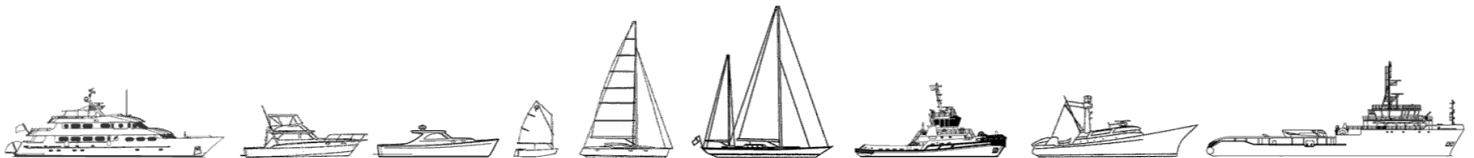


LIGHT CARGO AREA Raised Deck
MAIN CARGO TRANSPORT AREAS HEAVY





The details of all vessels are offered in good faith but we cannot guarantee or warrant the accuracy of this information nor warrant the condition of the vessel. Any buyer should instruct their agents, or their surveyors, to investigate such details as the buyer desires validated. This vessel is offered subject to sale, price change, location or withdrawal without notice.



AUSTRALIA - BULGARIA - INDIA - INDONESIA - ITALY - MALAYSIA - NEW ZEALAND - PANAMA - PHILIPPINES - SINGAPORE - SPAIN - UK - USA - VENEZUELA - VIETNAM