



SEABOATS

MARINE BROKERS WITH A GLOBAL APPROACH

AUSTRALIA - BULGARIA - INDIA - INDONESIA - ITALY - MALAYSIA - NEW ZEALAND - PANAMA - PHILIPPINES - SINGAPORE - SPAIN - UK - USA - VENEZUELA - VIETNAM

sales@seaboats.net - www.seaboats.net

NEW BUILD - 40m Fast Crew / Security Boat.



Listing ID - 3147

| | |
|---------------|---|
| Description | NEW BUILD - 40m Fast Crew / Security Boat |
| Date Launched | Built to order |
| Length | 40.4m (132ft 5in) |
| Beam | 7.9m (25ft 11in) |
| Draft | 1.7m (5ft 6in) |
| Location | Singapore |
| Broker | John Kearns john.kearns@seaboatsbrokers.com +64 21 400 805 |
| Price | POA |

40m Fast Crew/Security Boat, built to order under Lloyds +100A1 SSC WORKBOAT MONO G4 'Service area' MCH notation. The vessel shall be powered by three 1450 BHP Caterpillar C32 Marine Diesel engines coupled to three FFP and providing a top speed of 28.5 knots at 100% MCR @ 35 DWT and 26.5 knots at 85% MCR @ 35 DWT. The bridge shall be ballistic protected. Aircraft type seating is provided for twenty-nine personnel in the large deckhouse cabin in air conditioned comfort. The shipyard has delivered more than 25 units of the 40m Fast Crew Boat to the Offshore sector over the last 12 years and has now developed it's 3rd Generation Fast Crew/Security Boat that provides a very efficient hull form.

Delivery approx. 9 to 12 months depending on shipyard capacity.

PRINCIPAL DIMENSIONS

Length Overall: 40.4m

Beam Overall: 7.9m

Draft(Hull): 1.7m

Draft (Prop Tip): 1.9m
Depth (Moulded): 3.6m
Construction: Aluminium
G.R.T: 288 T

PROPULSION & PERFORMANCE

Main Engines: 3 x CATERPILLAR C32 ACERT DITTA
IMO Tier II - Type Approved
Power: 3 x 1450 BHP @ 2100 RPM
Max Speed: 28.5 KTS@ 35t DWT, 100% MCR
Service Speed: 26.5 KTS@ 35t DWT, 85% MCR Approx.

AUXILIARY EQUIPMENT

Generators: 2 x 86kw CATERPILLAR C4.4 Dita
Bow Thruster: 1 Tonne Hydraulic Thruster

CAPACITIES

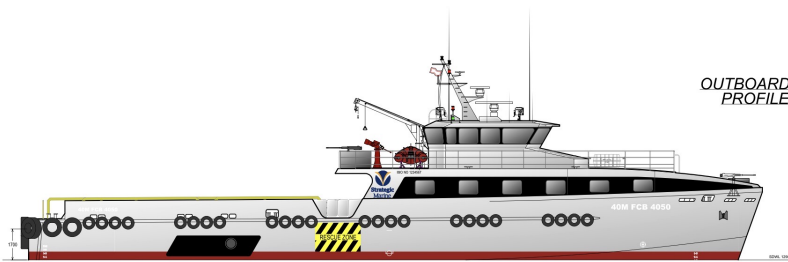
Fuel Oil: 70,000 Ltrs
Fresh Water: 30,000 Ltrs
Sullage: 500 Ltrs

CARGO DECK

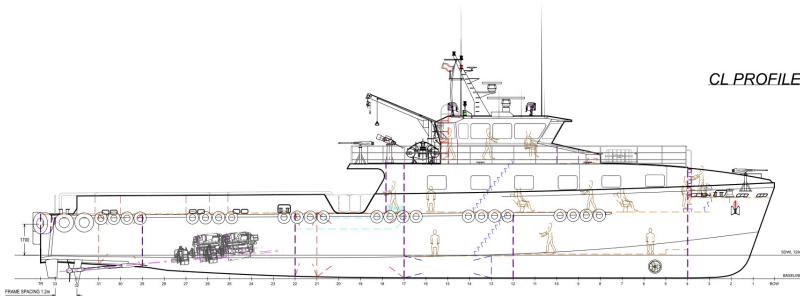
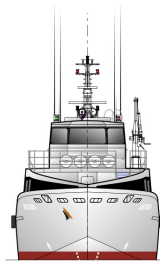
Max Deadweight: 95 tonnes
Area: 120 M2
Rating: 2 T/M2
Deck Cargo Capacity (Approx.): 40 tonnes

ACCOMMODATION

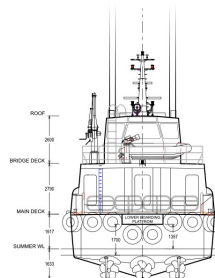
Offshore Service/Industrial Personnel: 29
Sleeping Cabins: 9
Sleeping Berths: 25



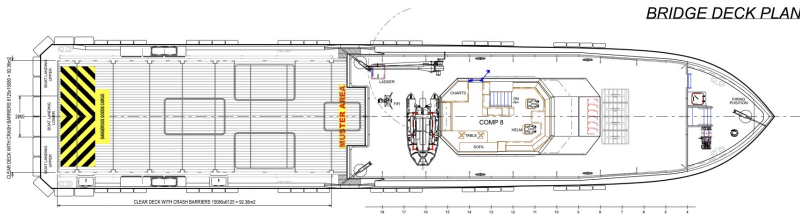
OUTBOARD
PROFILE



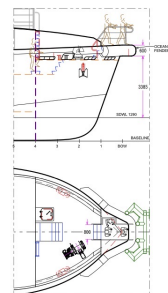
CL PROFILE



BOW BOARDING
OPTION



BRIDGE DECK PLAN



MAIN DECK PLAN



LOWER DECK PLAN

| PRINCIPAL PARTICULARS | |
|-------------------------|---------|
| LENGTH O.A. | m 40.4 |
| BEAM MOULDED | m 7.9 |
| DEPTH MOULDED | m 3.6 |
| HULL STRUCTURE | ALU |
| SUPERSTRUCTURE | ALU |
| GRT | 288 |
| DRAFT MAX BL | m 1.7 |
| DRAFT MAX PROP | m 1.9 |
| CLEAR DECK | m 120 |
| FUEL OIL | m 70 |
| FRESH WATER | m 30 |
| BLACK WATER | m 0.5 |
| PASSENGERS | 29 |
| CABINS / BERTHS | 9 / 25 |
| DECK STRENGTH | t/m 2.0 |
| MAX DEAD WEIGHT | t 95 |
| MAX DECK CARGO (approx) | t 40 |

| PROPULSION | |
|--------------------------------|----------|
| 3x CAT C32 C-RATING | |
| 3x 1081 kW (1450 hp) @ 2300rpm | |
| BOW THRUSTER | 11 |
| PRELIM / PREDICTED SPEEDS | |
| AT 100% MCR, 35wt | kts 28.5 |
| AT 85% MCR, 35wt | kts 28.5 |

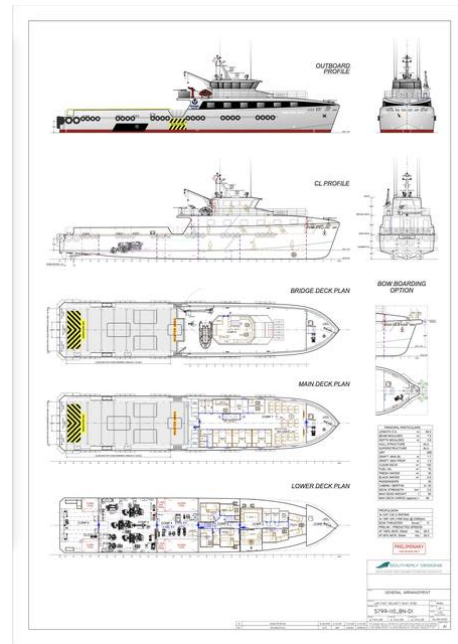
PRELIMINARY
FOR REVIEW ONLY



GENERAL ARRANGEMENT

| | | | |
|----------|------------------------------|----------|----------------|
| PROJECT | LOW FAST SECURITY BOAT (FSB) | FILE NO. | S799-I10_BN-DI |
| DATE | 01/06/2020 | REVISION | 1 OF 1 |
| DESIGNER | A. TAYLOR | CHECKED | A. TAYLOR |
| DATE | 01/06/2020 | APPROVED | A. TAYLOR |

| | | | | | | | |
|-----|----|-------------------|------------|-----------|-----------|-----------|-----------|
| REV | 01 | ISSUED FOR REVIEW | 01/06/2020 | A. TAYLOR | A. TAYLOR | A. TAYLOR | A. TAYLOR |
| | | REVISION DETAILS | DATE | BY | CHECKED | APPROVED | |



A series of line drawings of various boats, including a motorboat, a speedboat, a sailboat, and a tugboat.

AUSTRALIA - BULGARIA - INDIA - INDONESIA - ITALY - MALAYSIA - NEW ZEALAND - PANAMA - PHILIPPINES - SINGAPORE - SPAIN - UK - USA - VENEZUELA - VIETNAM