



# SEABOATS

MARINE BROKERS WITH A GLOBAL APPROACH

AUSTRALIA - BULGARIA - INDIA - INDONESIA - ITALY - MALAYSIA - NEW ZEALAND - PANAMA - PHILIPPINES - SINGAPORE - SPAIN - UK - USA - VENEZUELA - VIETNAM

[sales@seaboats.net](mailto:sales@seaboats.net) - [www.seaboats.net](http://www.seaboats.net)

## FLEX Seat Suspension

FLEX



**Listing ID - 3183**

**Description** Flex Seat Suspension

**Product** Seat suspension for high-speed boats type

**Usage** Any boat that is driven hard

**Application** Is used on all start seat models and can be adapted to others

**Availability** Fast deliver, anywhere in the world

**Price** From NZD 1,532 (excl GST)

### FLEX

Build your own suspension boat seat from Shark FLEX suspension unit. You can select your seat type, choose the right riser box (plinth), and add accessories to suit your requirements.

#### Specifications of FLEX suspension unit:

-Rugged simplicity: has only 3 unique parts (2 used twice).

- Compatible with most off-the-shelf seats and attachments (including swivels) as well as Shark seats. See Operational info for mounting specifics.
- 200mm progressive and ULTRA-SMOOTH travel** (no weight adjustments needed between 40kg and 120kg).
- Light** at only 9kg.
- 450mm high unloaded.
- Compact** 300mm wide, 350mm deep.
- Less fatigue** from 3 axis shock mitigation eliminates whiplash from lateral and fore-aft forces.
- Non-corroding**, soft-edged and non-marking 316 stainless and Flexanite construction.
- Super low maintenance
- Tested** 1 Million full 10g impacts (200mm displacement, 100ms duration, 100kg payload)
- Crash test rating** to HSC2000 Annex 10 requirements.
- 3 year global **Manufacturer's Warranty** on all parts
- Independent tests reveal that Flex **outperformed** well known European brand.
- Easy **one man installation**.
- Easily **repairable** (shock can be replaced in under 2 minutes by one person).
- Suspension can be bolted directly to a fixture with 8 bolts (minimum).

## Shark Flex Shock-Mitigation System

Take one look at the Shark suspension and you see it right away... Only one moving part (the shark absorber) mounted to two rugged but elegant injection-moulded leaf-springs with massive 200mm of vertical movement without any of the sharp edges or pinch points that are found on other suspensions. There is also nothing to rust, no coating to peel, just hi-tech UV-protected Flexanite with colour that is all the way through

The unique "Flex" design absorbs impacts in all three axes... handy, because waves don't just pitch straight up and down! Flexanite composite plastic makes the Shark Flex system VERY light, yet robust, with minimal maintenance needed.

The same approach applies to the Shark Jockey seats which have a tiny footprint and weight only 3kg, but which cater for all sizes of passenger and allows both sitting and standing without needing to readjust the seat.

Shark Flex has been tested to withstand over one million 10G impacts of more than 100ms duration at 120kg payloads (100kg on the seat and 20kg on the deck) and the entire system complies to test protocols defined by the UK and US military.

Despite this ruggedness, Shark provides a supple ride – the softest available, like "riding on a big marshmallow!"

Flex is part of a complete system including a range of seating and elevating plinths to suit any marine application...

## Suspension Base - Shark Flex

Description	Weight Rating (kg)	Shock Travel (mm)	Dimensions W x H x D (mm)
Shark Flex	40 - 120	200	300 x 450 x 350
Shark Flex-One	40 - 100	175	300 x 400 x 350

- Ideal for making your ride softer.
- The Flex suspension unit is simple with only one moving part. The original, more compact "Flex-one" is also available
- Self adjusts for passengers from 40kg to 120kg.
- Exclusive stainless steel shock absorber.
- Three-axis shock mitigation for reduced whiplash from lateral and fore-aft forces.
- Small foot print.
- Non-corroding 316G stainless and Flexanite.
- Low maintenance.
- Tested 1 million full 10G impacts (200mm displacement, 100ms duration at 100kg payload).
- Light weight and easy to install.
- Complies with HSC 2000 Annex 10.
- 3 years warranty.



Specification	
Model	Shark Flex
Material	316G Stainless & Flexanite
Fastenings	316G Stainless Steel
Weight	9kg
Dimensions W x H x D (mm)	300 x 450 x 350
Rated Weight Setting	40kg - 120kg, Self Adjusting
Shock Mitigation System	Progressive 10G Rated Oil & Nitrogen Filled Shock
Shock Travel	200mm
Mounting Holes	8 x Ø8mm



Multiple mounting hole patterns allowing the base to be mounted anywhere

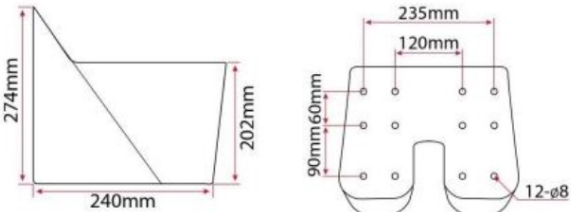
# Shark - Plinths



Storage compartment in plinth

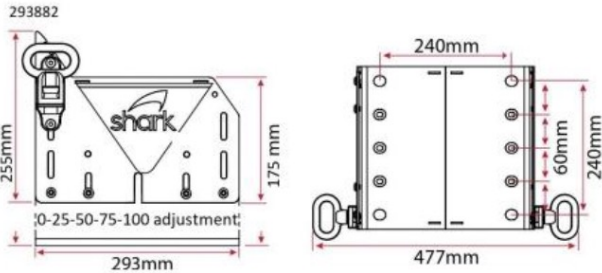
Description	Overall Dimensions L x W x H (mm)
<b>Shark Plinth</b>	293 x 325 x 274

Single mould for added strength  
Storage compartment.  
12ltrs of storage.



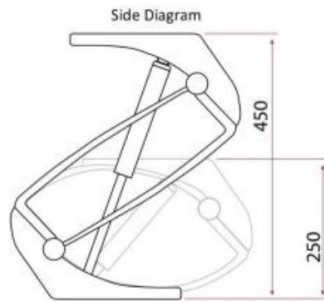
Description	Overall Dimensions L x W x H (mm)
<b>Shark Adjustable Alloy Plinth</b>	312 x 354 x 255

5 adjustable heights, as shown below  
or up 25mm, 50mm, 75mm and 100mm  
Foot rest pegs can be folded upwards when not in use.  
Front plate can be removed and be made into a storage  
compartment for various items.

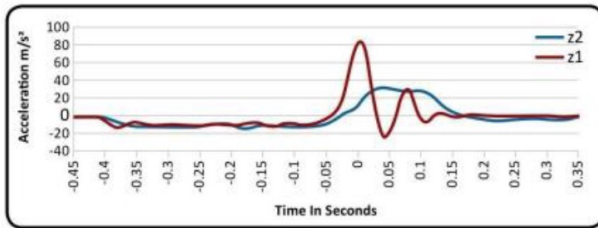
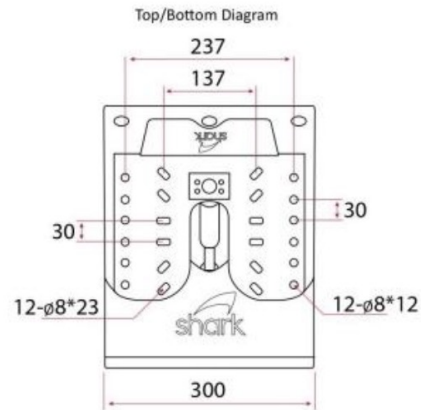




Flex suspension embodies 3 unique parts with 3 axis shock mitigation protecting against injury and whiplash



this unique design provides a unit which compresses to half it's normal height and carries more than 10 times its own weight



In the graph shown (z1), the 70kg payload would experience a shock of 10 times its weight (or 700kg) for a tenth of a second, In the second test (z2) you can see the Shark Flex significantly reducing that impacts well as slowing the impact which allows a person's body to respond to it.

#### Ergonomics guidelines for comfort and safety.

1. Ensure seat installed in rearmost position on suspension (use rear holes)
2. Ensure occupants under 1.7m have footrests for comfort, safety, and posture.
3. Ensure passengers are fully seated on seat, not in forward position (shown left)

INCORRECT SEATING POSITION:  
MAX SUSPENSION RATING = 63KG

CORRECT SEATING POSITION:  
MAX SUSPENSION RATING = 125KG



#### FLEX





LEANING POSITION ONLY

CORRECT SEATING POSITION:  
MAX SUSPENSION RATING = 125KG



#### Suspension Base - Shark Flex

Description	Weight (kg)	Shock Travel (mm)	Dimensions W x H x D (mm)
Shark Flex	40 - 120	200	300 x 450 x 350
Shark Flex-One	40 - 100	175	300 x 400 x 350

- Ideal for making your ride softer.
- The Flex suspension unit is simple with only one moving part. The original, more compact 'Flex-one' is also available.
- Self adjusts for passengers from 40kg to 120kg.
- Exclusive stainless steel shock absorber.
- Three-axis shock mitigation for reduced whiplash from lateral and fore-aft forces.
- Small foot print.
- Non-corroding 316G stainless and Flexanite.
- Low maintenance.
- Tested 1 million full 10G impacts (200mm displacement, 100ms duration at 100kg payload).
- Light weight and easy to install.
- Complies with HSC 2000 Annex 10.
- 3 years warranty.

Specification	
Model	Shark Flex
Material	316G Stainless & Flexanite
Fastenings	316G Stainless Steel
Weight	9kg
Dimensions W x H x D (mm)	300 x 450 x 350
Rated Weight Setting	40kg - 120kg, Self Adjusting
Shock Mitigation System	Progressive 10G Rated Oil & Nitrogen Filled Shock
Shock Travel	200mm
Mounting Holes	8 x Ø8mm



Multiple mounting hole patterns allowing the base to be mounted anywhere

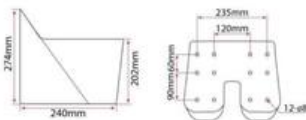
#### Shark - Plinths

Description	Overall Dimensions L x W x H (mm)
Shark Plinth	293 x 325 x 274

Single mould for added strength  
Storage compartment.  
12hrs of storage.



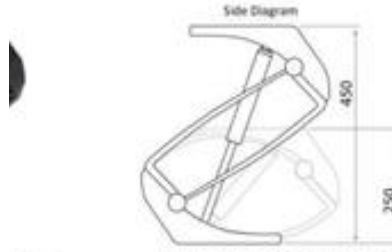
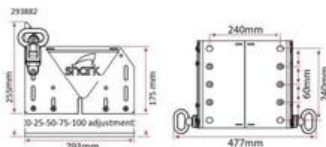
Storage compartment in plinth



Description	Overall Dimensions L x W x H (mm)
Shark Adjustable Alloy Plinth	312 x 354 x 255

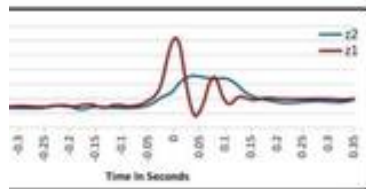
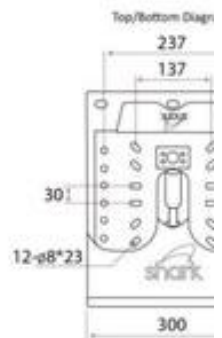
5 adjustable heights, as shown below  
or up 25mm, 50mm, 75mm and 100mm

Foot rest pegs can be folded upwards when not in use.  
Front plate can be removed and be made into a storage compartment for various items.



bodies  
13 axis  
protecting  
whiplash

this unique design provides  
a unit which compresses to half  
it's normal height and carries  
more than 10 times its own weight



In the graph shown (x1), the 70kg payload  
shock of 10 times its weight (or 700kg) for  
In the second test (x2) you can see the Shark  
reducing that impacts well as slowing the  
person's body to respond to it.

The details of all vessels are offered in good faith but we cannot guarantee or warrant the accuracy of this information nor warrant the condition of the vessel. Any buyer should instruct their agents, or their surveyors, to investigate such details as the buyer desires validated. This vessel is offered subject to sale, price change, location or withdrawal without notice.

