



SEABOATS

MARINE BROKERS WITH A GLOBAL APPROACH

AUSTRALIA - BULGARIA - INDIA - INDONESIA - ITALY - MALAYSIA - NEW ZEALAND - PANAMA - PHILIPPINES - SINGAPORE - SPAIN - UK - USA - VENEZUELA - VIETNAM

sales@seaboats.net - www.seaboats.net

24.99m Shoalbuster For Charter



Listing ID - 3230

Description 24.99m Shoalbuster For Charter

Date 2013

Launched

Length 24.99m (81ft 11in)

Beam 9m (29ft 6in)

Draft 2.4m (7ft 10in)

Location South of Spain

Broker Richard Pierrepont
richard.pierrepont@seaboatsbrokers.com
+44 7798 607 323

Price Notes For Charter Only

Built: 2013, Netherlands

Hull material: Steel

Flag: Netherlands

Class Society and Notation: BV I 3/3 (E), I HULL MACH Tug

PRINCIPLE DIMENSIONS

Length Overall: 24.99 m

Breadth: 9.00 m

Depth: 3.19 m

Draft: 2.40 m

NT: 52 tons

GT: 174 tons

MACHINERY & PROPULSION

Total power output: 2000 bhp

Main Engines: 2 x Caterpillar C32-TTA ACERT

Main Propulsion System: Twin screw

Auxiliary engines: 2 X 60 kW, John Deere

Propellers: 2

Speed cruising: 11 knots

ADDITIONAL INFORMATION

Bollard pull: 27.6 ton(m)

Gearboxes: 2 x Reintjes WAF 562L/5.947:1

Propulsion: 2 x Promarin fixed pitch propellers

Diameter: 2 x 1800 mm in v.d Giessen Optima nozzles

Bowthruster: 175 bhp, hydraulically driven

Rudders: 2 x fishtail rudders, 60 degrees

TANK CAPACITIES

Fuel oil: 62.2 m³

Fresh water: 18 m³

Sewage: 4.7 m³

Dirty oil: 3.1 m³

Lub. oil: 1.9 m³

Hydraulic oil: 0.9 m³

Gearbox oil: 0.4 m³

Bilge water: 0.9 m³

AUXILIARY EQUIPMENT

Generator sets: 2 x John Deere 4045TFM76, Capacity : 2 x 60 kVA, 50Hz, 230/400V

Fuel separator: Alva Laval MIB 303 760L/Hr

Transfer pumps: for water and fuel : SIHI 32 m³/hr at 3.5 bar

Hydraulic set: Caterpillar C-09 TA 315kW @ 2250 rpm

With clutchable hydraulic bow thruster pump

Compressor: Alup SCK 10-8, 70 m³ / hr @ 8 bar

Moonpool 1: 600 x 800 mm, Moonpool 2 : 400 mm diameter

DECK LAYOUT

Anchor winch: Ridderinkhof , hydraulically driven

Anchors: 1 x 270 kg Pool (HHP), 1 x 225 kg Pool (HHP)

Chain: 137.5 m short-link 19 mm chain

Anchor handling winch: 40 ton @ 6 m/min

Towing winch: 9 ton @ 20 m/min, 77 ton holding power

Deck crane: HS-Marine AKC 145LHE4 - 4.650kg @17.00 m

Towing pins: MKB quatro pin type

Chain / wire stopper: MKB type

Tugger winch: Dromec HPV-12000 12T @ 4.5/12 m/min

A-Frame: 25 ton SWL,

Plough: Several available

Deckload: 10 ton/m²

Container capacity: 2x 20 inches

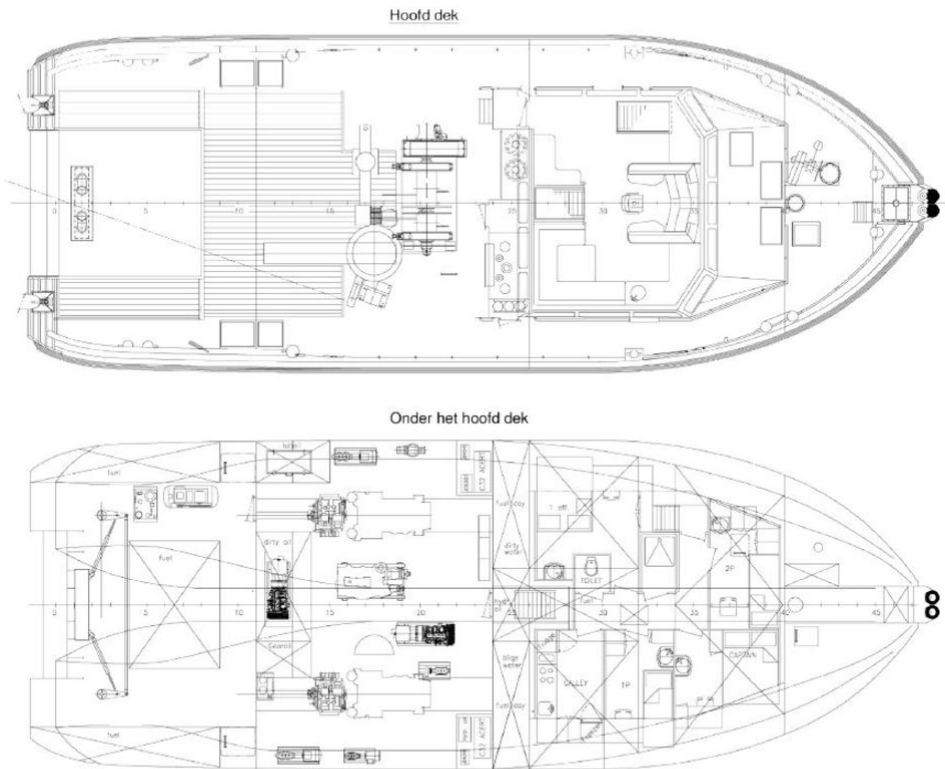
ACCOMODATION

Heated and air-conditioned living spaces for 5 persons, consisting of a captain's cabin, an officers cabin, one single crew cabin and one double crew cabin, a galley and sanitary facilities.

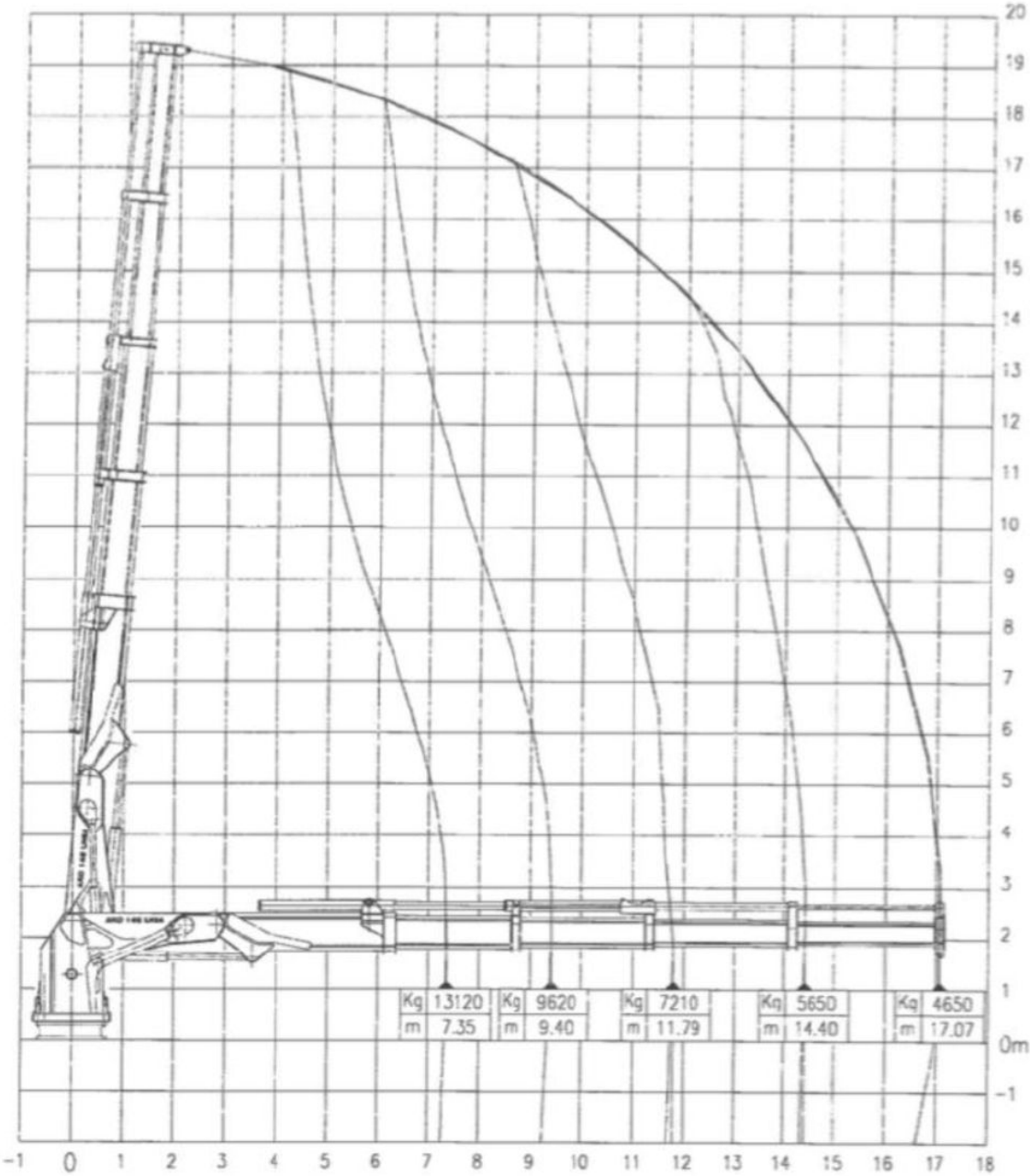
NAUTICAL AND COMMUNICATION EQUIPMENT

According GMDSS: Area A3

Searchlights: Pesch 2x 3000

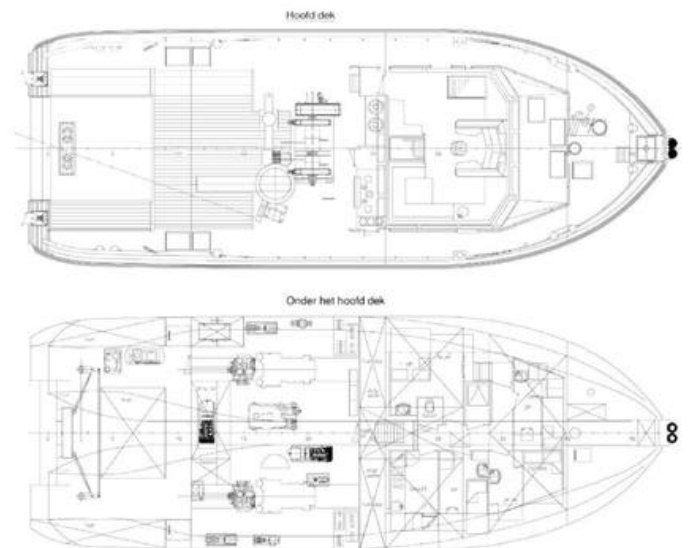
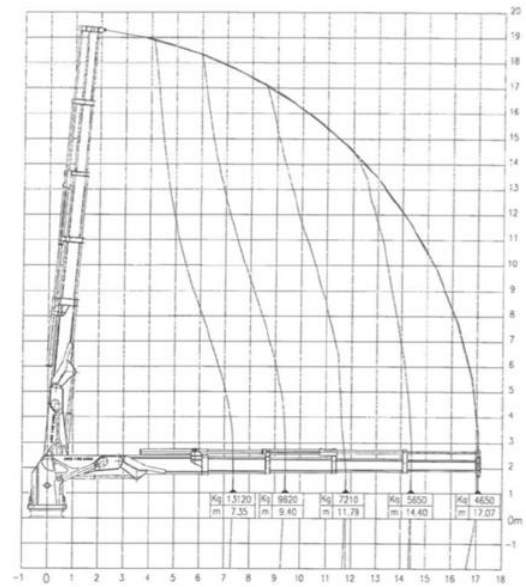


Crane AKC 145 LHE4





Crane AKC 145 LHE4



The details of all vessels are offered in good faith but we cannot guarantee or warrant the accuracy of this information nor warrant the condition of the vessel. Any buyer should instruct their agents, or their surveyors, to investigate such details as the buyer desires validated. This vessel is offered subject to sale, price change, location or withdrawal without notice.

