



# SEA BOATS

MARINE BROKERS WITH A GLOBAL APPROACH

AUSTRALIA - BULGARIA - INDIA - INDONESIA - ITALY - MALAYSIA - NEW ZEALAND - PANAMA - PHILIPPINES - SINGAPORE - SPAIN - UK - USA - VENEZUELA - VIETNAM

[sales@seaboats.net](mailto:sales@seaboats.net) - [www.seaboats.net](http://www.seaboats.net)

## 16.76m Twin Screw Tug For Charter



### Listing ID - 3234

**Description** 16.76m Twin Screw For Charter

**Date** 2019

**Launched**

**Length** 16.76m (54ft 11in)

**Beam** 5.94m (19ft 5in)

**Draft** 2.25m (7ft 4in)

**Location** France

**Broker** Richard Pierrepont  
[richard.pierrepont@seaboatsbrokers.com](mailto:richard.pierrepont@seaboatsbrokers.com)  
+44 7798 607 323

**Price Notes** For Charter Only

Built: 2019, Vietnam

Hull material: Steel

Flag: France

Class Society and Notation: BV Tug Coastal Area

Next DD: June 2022

Next SS: June 2022

### PRINCIPLE DIMENSIONS

Length Overall: 16.76 m

Breadth: 5.94 m

Depth: 2.54 m

Draft: 2.25 m

## **MACHINERY & PROPULSION**

Total power output: 1216 bhp

Main Engines: 2 x Caterpillar C18 TA/A

Main Propulsion System: Twin Screw

Auxiliary engine: 1 X 20.3 kW, Caterpillar C2.2 NA

Propellers: 2

Speed cruising: 11 knots

## **ADDITIONAL INFORMATION**

Built at Damen Shipyard in Vietnam

Displacement: 90 tons

Bollard pull ahead: 16.4 tons

Latest Dry Dock: March 2020

## **TANK CAPACITIES**

Fuel oil: 14.2m<sup>3</sup>,

Fresh water: 1.1 m<sup>3</sup>,

Sewage: 0.7 m<sup>3</sup>,

Bilge water/sludge: 0.5 m<sup>3</sup>

## **PROPULSION SYSTEM**

Gearboxes: 2x Reintjes WAF 264L 4.5:1

Propellers: 2x Kaplan II fixed pitch

Nozzles: 2x 1350 mm Van de Glessen "Optima" with stainless steel inner rings

Rudders: 2x streamlined double plates

Steering gear: Powered hydraulic 2x 45°, with rudder indicator

## **AUXILIARY EQUIPMENT**

Alternator 24 V 2x main engine driven

Battery sets 2x 24 V 200 Ah with changeover, 1x 24 v 80 Ah

Alarm system Engines, gearboxes, bilge alarm, fire detection engine room

Bilge/general service pumps Electrically driven Sterling SIHI VWSI 5013, 15m<sup>3</sup>/h

Fuel oil system Duplex filters, water separator and SOS valve

Cooling system Closed cooling system

Water system Electrically driven fresh water hydrophore 24 V

Fresh water heater 230 V, 30 liter

Ventilation Mechanical ventilation in engine room, 10.500 m<sup>3</sup>/h

## **DECK LAY-OUT**

Anchors: 2x 80 Kg Pool (High Holding Power)

Chain: 100 m shortlink, 12.5mm diameter

Anchor winch: Electrical for one anchor

Capstan: 1.3 ton at 9 m/min

Towing hook: aft Mampaey disc type, SWL 250 kN/ 25 ton

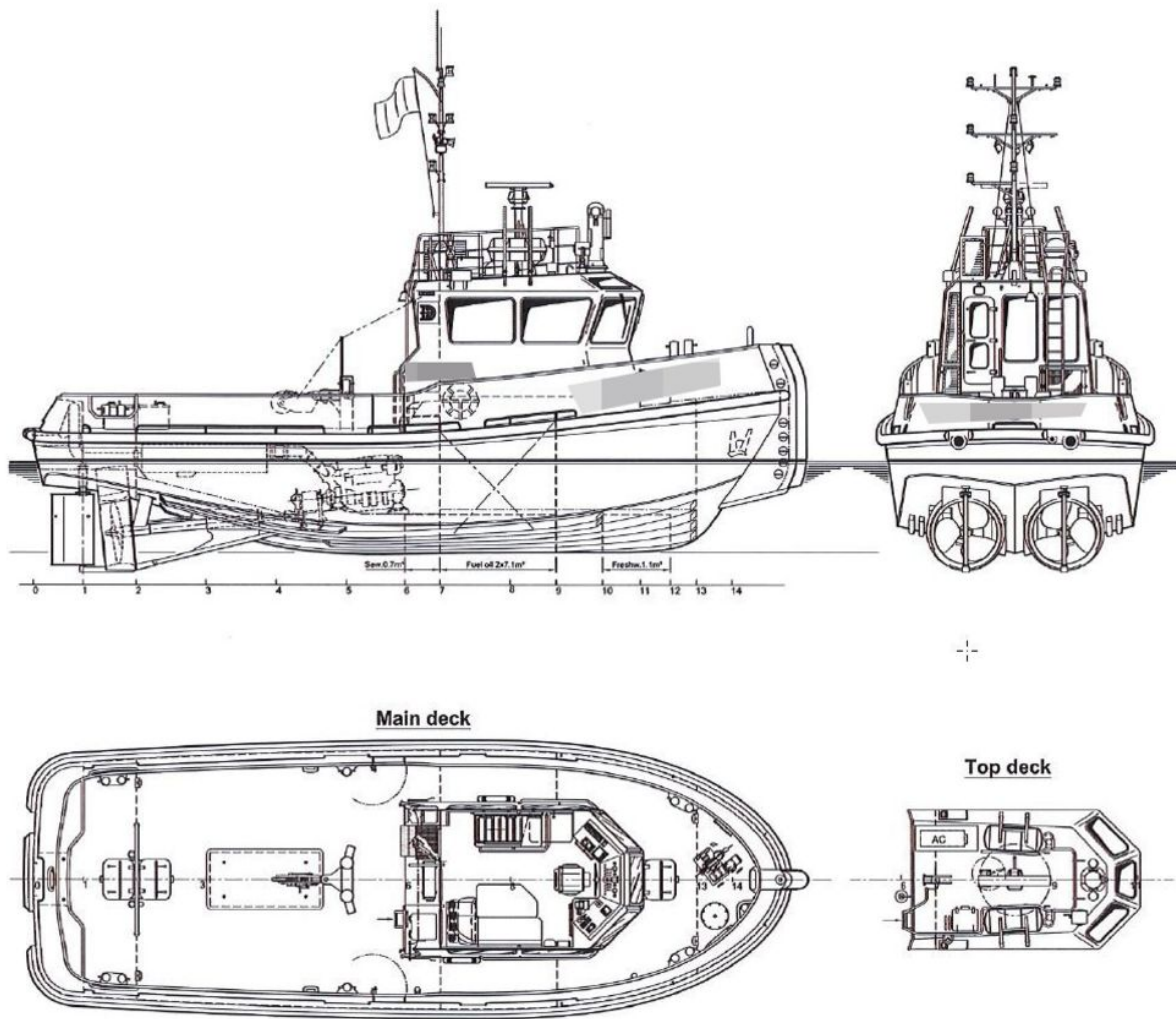
Life raft: 2x On top deck

Push bow Cylindrical rubber fender 380 mm diameter

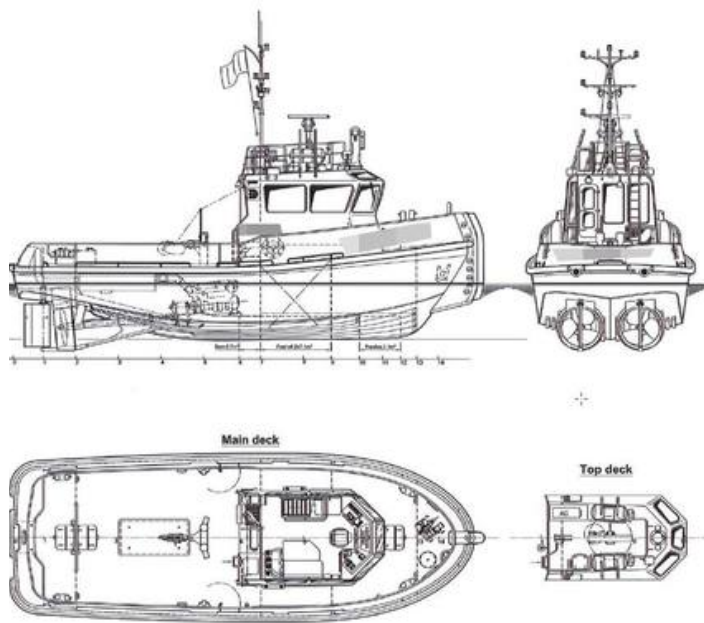
Fendering Continuous rubber D-fender around hull 200 x 200 mm

## **ACCOMMODATION**

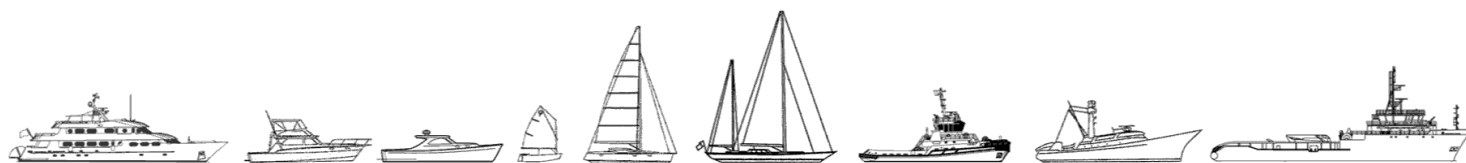
The accommodation is completely insulated and finished with durable modern linings, acoustical ceiling in the wheelhouse and a floating







The details of all vessels are offered in good faith but we cannot guarantee or warrant the accuracy of this information nor warrant the condition of the vessel. Any buyer should instruct their agents, or their surveyors, to investigate such details as the buyer desires validated. This vessel is offered subject to sale, price change, location or withdrawal without notice.



AUSTRALIA - BULGARIA - INDIA - INDONESIA - ITALY - MALAYSIA - NEW ZEALAND - PANAMA - PHILIPPINES - SINGAPORE - SPAIN - UK - USA - VENEZUELA - VIETNAM