



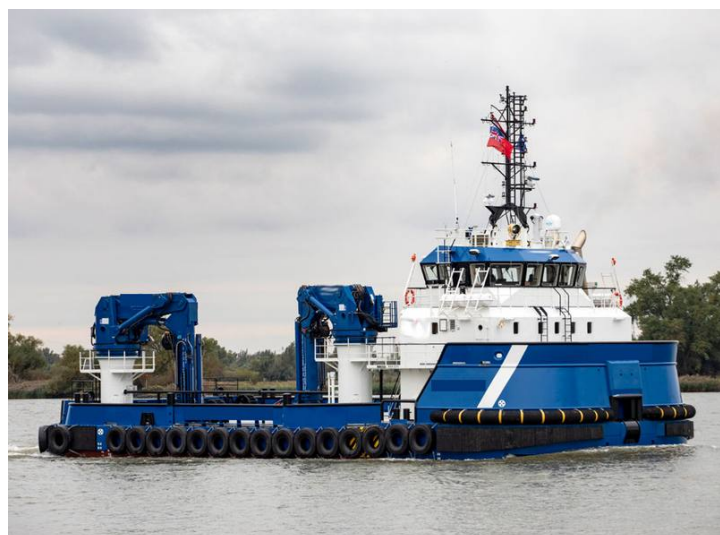
SEABOATS

MARINE BROKERS WITH A GLOBAL APPROACH

AUSTRALIA - BULGARIA - INDIA - INDONESIA - ITALY - MALAYSIA - NEW ZEALAND - PANAMA - PHILIPPINES - SINGAPORE - SPAIN - UK - USA - VENEZUELA - VIETNAM

sales@seaboats.net - www.seaboats.net

33.18m Multicat For Charter



Listing ID - 3241

Description 33.18m Multicat For Charter

Date 2019

Launched

Length 33.18m (108ft 10in)

Beam 14.50m (47ft 6in)

Draft 2.60m (8ft 6in)

Location UK Coast

Broker Richard Pierrepont
richard.pierrepont@seaboatsbrokers.com
+44 7798 607 323

Built: 2019, The Netherlands

Hull Material: Steel

Flag: United Kingdom

Class Society and Notation: BV Unrestricted

Next DD: October 2024

Next SS: October 2024

Next Annual Survey: October 2022

Principle Dimensions

Length Overall: 33.18m

Breadth: 14.50m

Depth: 3.85m

Draft: 2.60m

GT: 499 Tons

Machinery & Propulsion

Total Power Output: 1287 Bhp

Main Engines: 2x Rolls Royce US105 P6 FP

Main Propulsion System: Twin Screw

Auxiliary Engines: 2x 3454 kW, Caterpillar 3512c

Speed Cruising: 10 Knots

Additional Information

Draught Aft (Approx.): 2.60m (Aft Thrusters Up)

Draught Aft (Approx.): 4.90m (Aft Thrusters Down)

Bollard Pull: 43.3 Ton(M)

Tank Capacities (Approx.)

Fuel Oil 130.0 m³

Black/Grey Water 9.0 m³

Fresh Water 34.0 m³

Dirty Oil 3.0 m³

Hydr Oil 3.0 m³

Lub Oil 3.0 m³

Bilge Water 4.5 m³

Technical Water 47.0 m³

Propulsion System

Forward Thrusters Fixed 2x Rolls Royce Us105 P6 Fp

Power and Diameter 2x 480 Kw, 1300 Mm With Nozzle

Aft Thrusters Swing Type 2x Rolls Royce Tcns 073 Fp

Power and Diameter 2x 800 Kw, 1800 Mm With Nozzle

Stern Tunnel Thruster 1x Veth, Type Vt-400 400kw

Total Propulsion Power 2560 Kw (3481 Hp)

Drives And E-Motors Vacon And Marelli Motori

Auxiliary Equipment

Generator Sets 2 X Caterpillar 3512c, 1727 Ekw Each

Harbour Gen. Set Caterpillar C4.4, 85.5 Ekw @1500 Rpm

Transfer Pumps 2 X Sihi Vwsi, 50 M³/H (Fo And Fw)

Fuel Oil Separator Alfa Laval Mab 104

Deck Lay-Out

Anchor: 2 X 430 Kg Pool Tw (Hhp)

Anchor Winch: Dmt, Hydraulically Driven

Deck Crane Fore: Hs Marine Akc 370 / 21 He3 24 Ton(M) @ 10m, 9 Ton (M) @ 21 M

Winch on Crane: 11 Ton Single Fall

Deck Crane: Aft Hs Marine Akc 550 / 20 He3 33.5 Ton(M) @ 10.5m, 15 Ton(M) @ 20 M

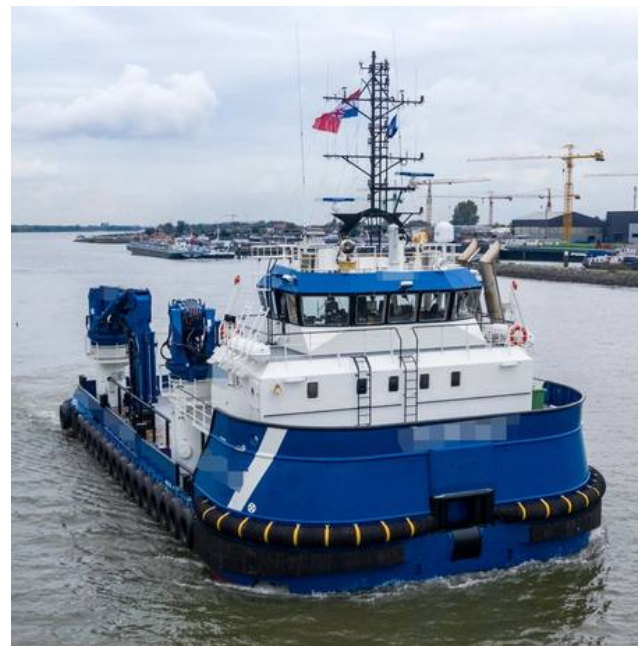
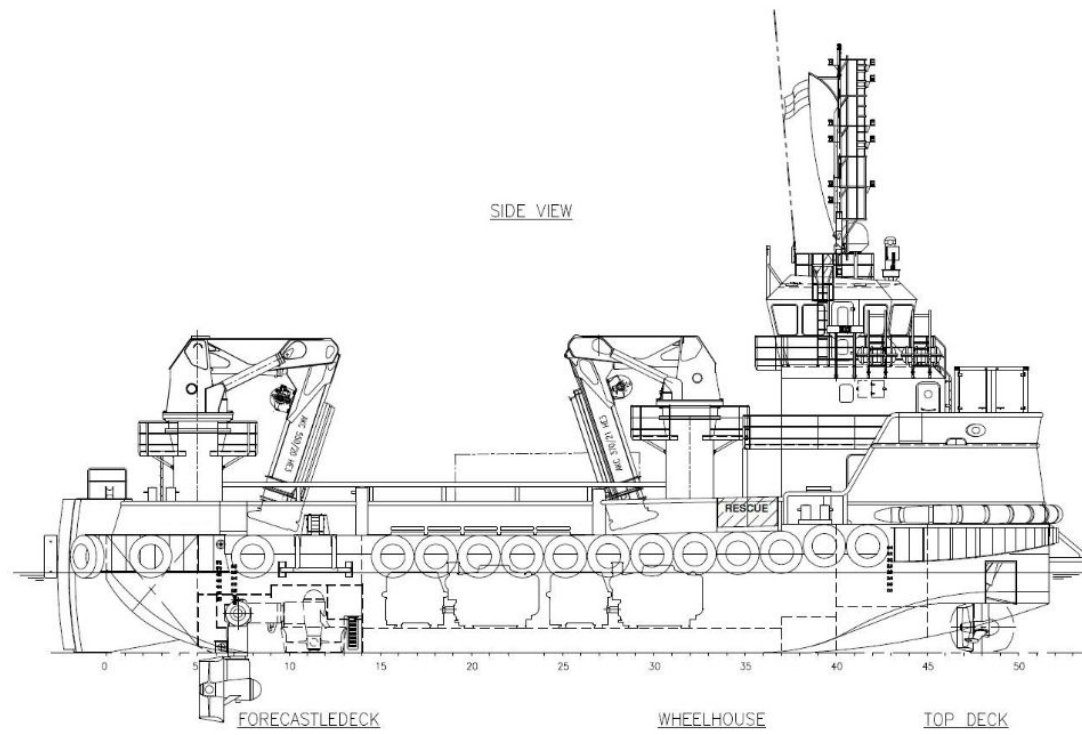
Winch on Crane: 11 Ton Single Fall

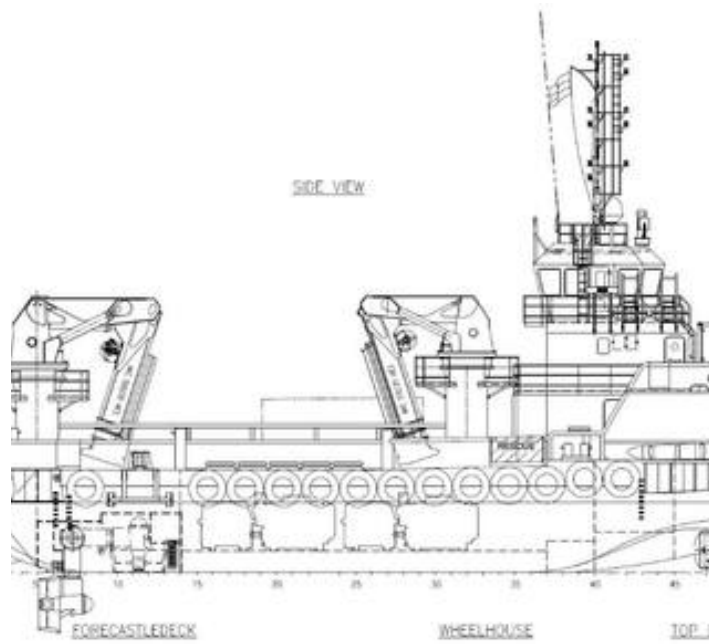
Capstan: Electrically Driven 5 Ton @ 12 M/Min

AHT Winch: Dmt Ahtw-H1500

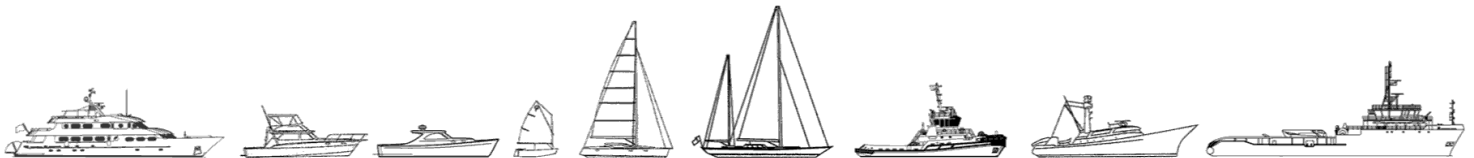
Anchor Handling Capacity

Anchor Handling: 150 Ton @ 4 M/Min 200 Ton Brake Holding Power Towing 55 Ton @ 10 M/Min 125 Ton





The details of all vessels are offered in good faith but we cannot guarantee or warrant the accuracy of this information nor warrant the condition of the vessel. Any buyer should instruct their agents, or their surveyors, to investigate such details as the buyer desires validated. This vessel is offered subject to sale, price change, location or withdrawal without notice.



AUSTRALIA - BULGARIA - INDIA - INDONESIA - ITALY - MALAYSIA - NEW ZEALAND - PANAMA - PHILIPPINES - SINGAPORE - SPAIN - UK - USA - VENEZUELA - VIETNAM