



# SEABOATS

MARINE BROKERS WITH A GLOBAL APPROACH

AUSTRALIA - BULGARIA - INDIA - INDONESIA - ITALY - MALAYSIA - NEW ZEALAND - PANAMA - PHILIPPINES - SINGAPORE - SPAIN - UK - USA - VENEZUELA - VIETNAM

[sales@seaboats.net](mailto:sales@seaboats.net) - [www.seaboats.net](http://www.seaboats.net)

## 57.9m AHTS For Charter



### Listing ID - 3261

**Description** 57.9m AHTS For Charter

**Date** 1999

**Launched**

**Length** 57.90m (189ft 11in)

**Beam** 15m (49ft 2in)

**Draft** 3.80m (12ft 5in)

**Location** Norway

**Broker** Richard Pierrepont  
[richard.pierrepont@seaboatsbrokers.com](mailto:richard.pierrepont@seaboatsbrokers.com)  
+44 7798 607 323

Built: 1999, Japan

Hull material: Steel

Flag: Norway

Class Society and Notation: DNV 1A1 Tug SF E0 DYNPOSAUT DK

Next DD: October 2021

Next SS: July 2024

Next Annual Survey: October 2022

### PRINCIPLE DIMENSIONS

Length Overall: 57.90m

Breadth: 15m

Depth: 5.50m

Draft: 3.80m

### MACHINERY & PROPULSION

Total power output: 5440 bhp  
Main Engine: 2 x Bergens KRMB-9  
Main Propulsion System: Twin Screw  
Auxiliary engine: 2 X 360 KW , Scania  
Propellers: 2  
Speed maximum: 13.5 knots  
Speed cruising: 9 knots

#### **ADDITIONAL INFORMATION**

Rebuilding 2018

Deck area 372 m<sup>2</sup>  
Tonnage: 1368 t  
Bollard pull 66 TBP

Deck crane Z Marine, 25 Te capacity at 22 m  
Aux deck crane AKC 145 HE4, 9 Te at 11 m  
Deck capacity 5 Te/m<sup>2</sup> , 10 Te/m<sup>2</sup> at stern

Propulsion: 2 x CPP Rolls Royce 600 AGSC KP/500 ND  
Bow thrusters: 2 x 700 bhp, 8.25 Te thrust each  
Stern thruster: 1 x 700 bhp, 8.25 Te thrust

Fuel oil pumps 80 m<sup>3</sup>/h  
Freshwater pumps 100 m<sup>3</sup> /h  
FiFi set Diesel driven 600 m<sup>3</sup> /h  
FiFi monitors 2 x 300 m<sup>3</sup> /h, water/foam

#### **TANK CAPACITIES**

Fuel oil 406 m<sup>3</sup>  
Freshwater 470 m<sup>3</sup>

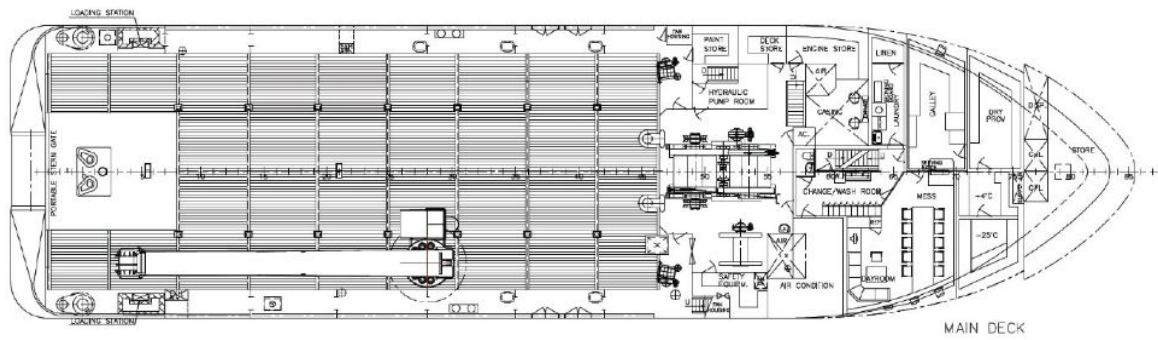
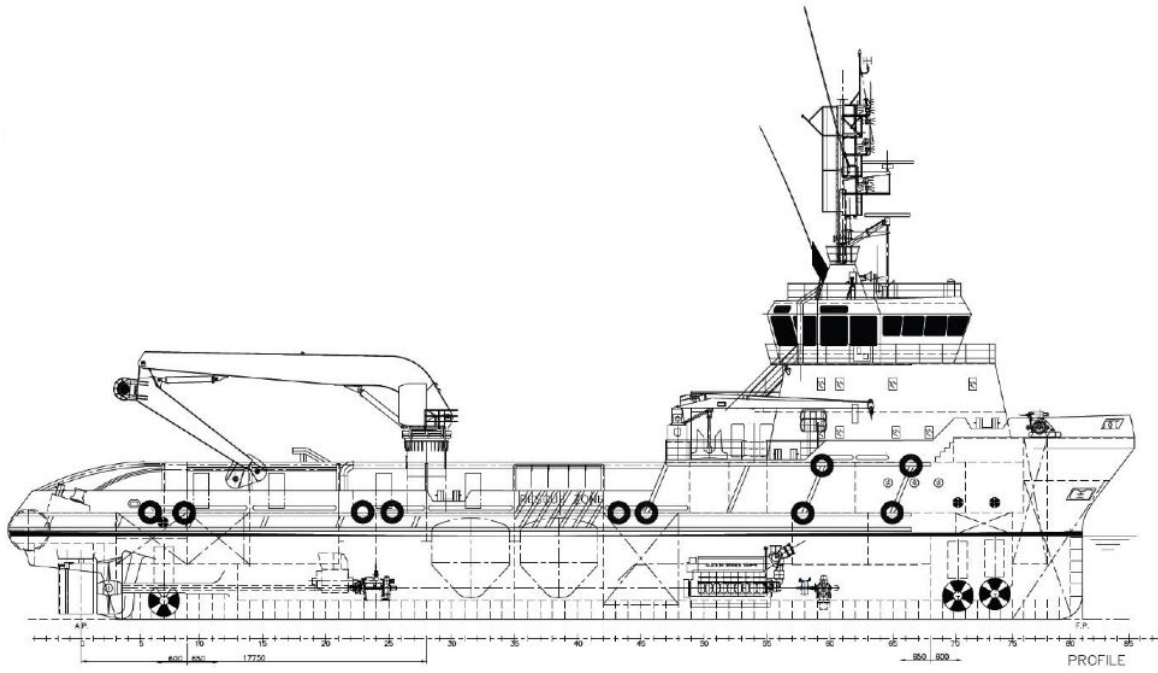
#### **DECK EQUIPMENT**

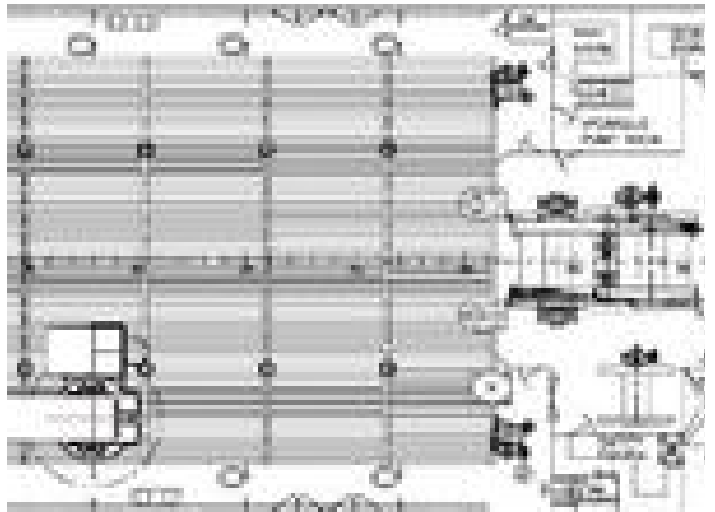
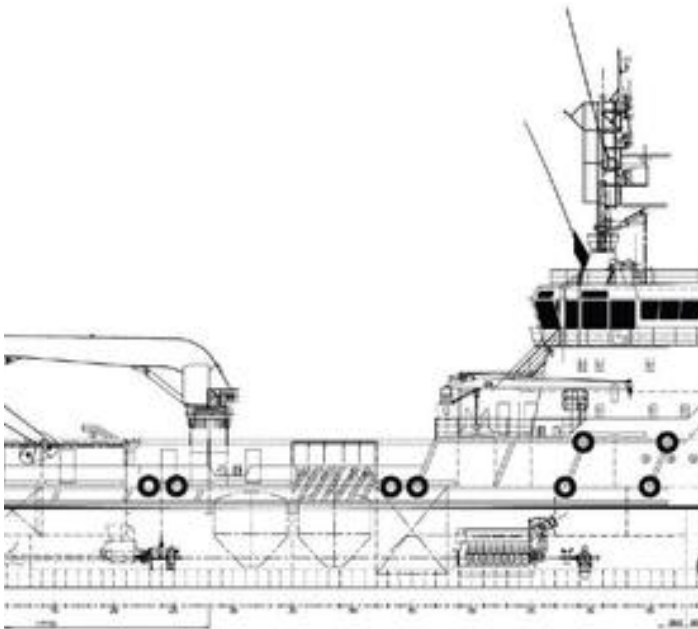
Towing / AH winch 150 Te pull / 250 Te brake with two drums and capacity of 1400 m wire 56 mm.  
Tugger winches 2 off winches 5 Te pull 1 off winch 20 Te pull  
Storage drum 1 x wire  
Shark jaws 2 x Karm forks  
Smith towing bracket 200 Te SWL at forecastle  
Chain gypsy 2 x for Ø = 76 mm chain  
Capstan 2 x 10 Te  
Rig chain lockers 2 x 53 m<sup>3</sup>  
Stern roller Ø = 2 m, L = 4 m  
Fast Rescue Craft MP660 Springer

#### **ACCOMMODATION**

Air-conditioned accommodation for 24 persons including vessel crew.  
Client cabins, meeting rooms and facilities for coordinating projects.

Large deck with crane reach to stern roller and wood protection for safe and efficient load-out, sea fastening





The details of all vessels are offered in good faith but we cannot guarantee or warrant the accuracy of this information nor warrant the condition of the vessel. Any buyer should instruct their agents, or their surveyors, to investigate such details as the buyer desires validated. This vessel is offered subject to sale, price change, location or withdrawal without notice.

