



# SEABOATS

MARINE BROKERS WITH A GLOBAL APPROACH

AUSTRALIA - BULGARIA - INDIA - INDONESIA - ITALY - MALAYSIA - NEW ZEALAND - PANAMA - PHILIPPINES - SINGAPORE - SPAIN - UK - USA - VENEZUELA - VIETNAM

[sales@seaboats.net](mailto:sales@seaboats.net) - [www.seaboats.net](http://www.seaboats.net)

## NEW BUILD - 14.8m Polyethylene Agent Boat



### Listing ID - 3400

**Description** NEW BUILD - 14.8m Polyethylene Agent Boat

**Date Launched** Delivery period : 22 weeks

**Length** 14.8m (48ft 6in)

**Beam** 4.60m (15ft)

**Location** Tuzla / Istanbul / Turkey

**Broker** Georgi Savchev  
[georgi.savchev@seaboatsbrokers.com](mailto:georgi.savchev@seaboatsbrokers.com)  
+359 88 7228674

**Price** 385,000 Euro

Length: 14.80m

Breadth: 4.60m

Hull and cabin made of high-density polyethylene

Polyethylene is so elastic that the hull can absorb impacts of collisions even at high speed, this makes it a very safe hull material.

Polyethylene not to be affected by corrosion so no painting needed

Double hull. Foam between hulls

Antislip surface on main deck

Insulated covering inside cabin

### Propulsion System

2 x Cummins QSM11-610 main engines (610 hp each, 2300 rpm, 1500 hours annual, 78 lt/h fuel consumption at max)

ZF 325-1 reduction gears (2,037/1)

28 kn maximum speed

Shafts: 316 L stainless steel  
Rudder blades: 316 L stainless steel  
Propellers: Brass  
L bracket: 316 L stainless steel

### **Bow Thruster**

Maxpower CT125, 11.5 hp, 24V

### **Air Conditioning**

32000 BTU air conditioner in passenger cabin  
16000 BTU air conditioner in accommodation cabin

### **Electric System**

10 kW marine generator (220 V / 50 Hz)  
Seperated battery groups for engines, generator and service equipments  
Seperated battery cutt-offs for battery groups  
24/60 (3) 120-240 V battery chargers (All battery groups are chargeable with 220V shore connection)  
Invertor 24/375, 230V  
Carling control buttons for equipments  
USB charger  
LED lighting for all closed spaces  
IP67 water resistant lighting armatures around cabin to enlighten whole maindeck  
Certified marin cables for all connections  
RG 213 cable for antennas  
Planet Boat own product electronic control card for emergency alarms

### **Navigation Equipment**

Navigation lights  
Planet Boat own product electronic card for navigation lights  
Remote controlled search light  
2 x Simrad GO12 XSE Radar screen  
Simrad Halo 20 Radar  
Simrad RS 20 VHF  
XSonic P319 Echosounder  
Exterior announce system

### **Fuel, Fresh Water, Dirty Water, Bilge**

2 x 1200 lt fuel tanks, 1 x 280 lt fresh water tank, 1 x 280 lt sewage tank, 1 x 60 lt bilge tank (All tanks made of polyethylene)  
Level sensor and low level alarm for fuel tanks and fresh water tank  
Level sensor and high level alarm for bilge, grey and black water tanks  
Tank level gauges on control desk  
13.2 lt/min Hydrophore (24 V)  
Planet Boat own product electronic control card for emergency alarms of tanks and bilge wells on control desk  
24V electrical toilet  
Macerator pump for sewage tank  
Bathroom  
Submersible bilge pumps in tank room, engine room (Front & aft). Emergency submersible bilge pump in engine room  
15 lt/min bilge circulation pump for pump the bilge out of the boat

### **Internal Outfitting**

Rest room for 2 crews

1 + 1 + 12 seating capacity in cabin. Captain seat and crew seat have shock absorbers

CCTV camera system to view and record whole maindeck and inside part of cabin

Aluminium framed windows around cabin. Windshields are heat resisted with timer

Aluminium framed hinged doors at aftside of cabin

Wipers

Windshields washing system

Planet Boat own product electronic control card for wipers

### **Rudder system**

Data Hidrolik DP88K Helm pump

Data Hidrolik DS290S Rudder cylinder

Rudder angle indicator

### **Ventilation**

2 x Blower in engine room (50 m<sup>3</sup>/min each) (24 VDC)

1 piece of ventilating fan with 5 m<sup>3</sup>/min capacity in tank room (24 VDC)

### **Main Deck**

316L stainless steel bollards on main deck

316L stainless steel handrails

120 mm D type Rubber fenders around hull

15 kg galvanic anchor

Ø8 mm chain (20 m)

### **Safety & Fire Fighting**

14 x life jackets

4 x life buoys

Internal fire pump with 3 m<sup>3</sup>/h flow rate (24 V)

Heat and fire dedectors at closed spaces

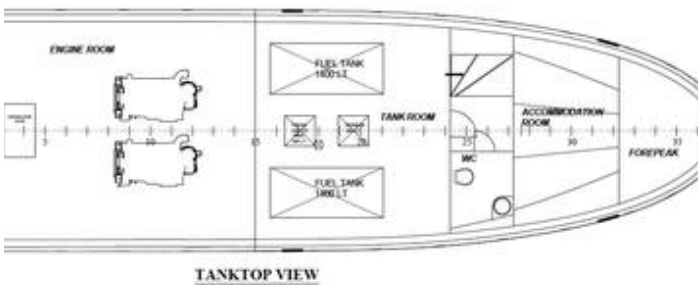
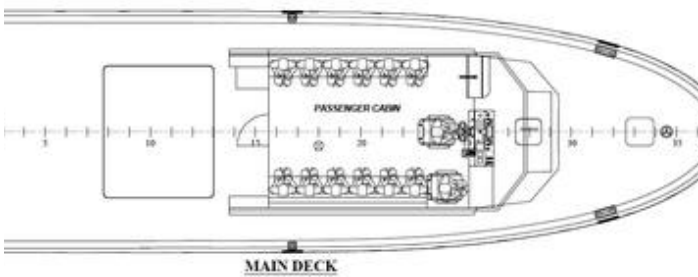
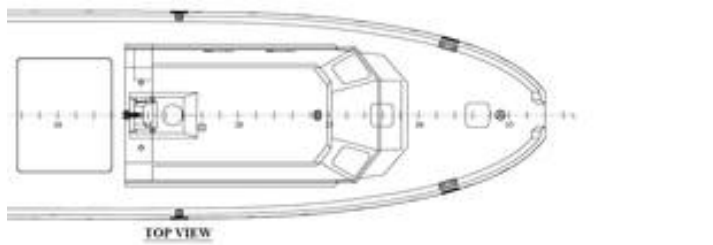
2 x 6 kg powder self-activating fire extinguisher in engine room

1 x 6 kg powder fire extinguisher in cabin

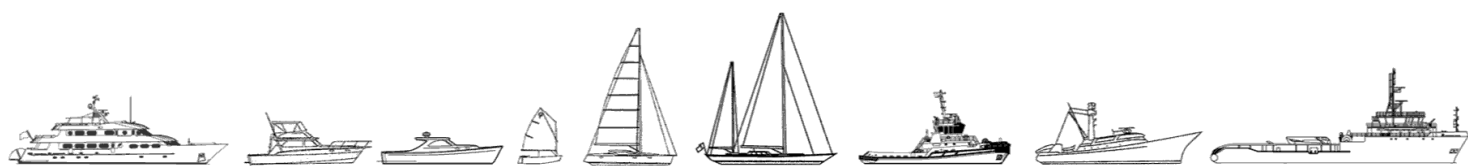
3 x 2 kg powder fire extinguisher in cabin and rest room

First aid kit





The details of all vessels are offered in good faith but we cannot guarantee or warrant the accuracy of this information nor warrant the condition of the vessel. Any buyer should instruct their agents, or their surveyors, to investigate such details as the buyer desires validated. This vessel is offered subject to sale, price change, location or withdrawal without notice.



AUSTRALIA - BULGARIA - INDIA - INDONESIA - ITALY - MALAYSIA - NEW ZEALAND - PANAMA - PHILIPPINES - SINGAPORE - SPAIN - UK - USA - VENEZUELA - VIETNAM